

FOR LEASE OR BUILD-TO-SUIT



Part of a 520 Acre Master-Planned Rail-Served Industrial Park

Property Details

- Property Size: 15.4 acres
- Four (4) spurs containing ~4,400 linear feet of track
- 1.75 Acres of additional stabilized railbed in place
- Electric, Water and Septic available
- Partially Fenced

Development Info

- Dual Rail Service Offering Competitive Pricing (UP & BNSF)
- State-Of-The-Art Rail Terminal & Transload Facility
- Over 15 miles of Internal Track Developed to Date
- Easy Access to Park via IH-37, Loop 1604 & Highway 181



16492 Old Corpus Christi Rd  
Elmendorf, TX 78112

Developer:



Rail Operator:

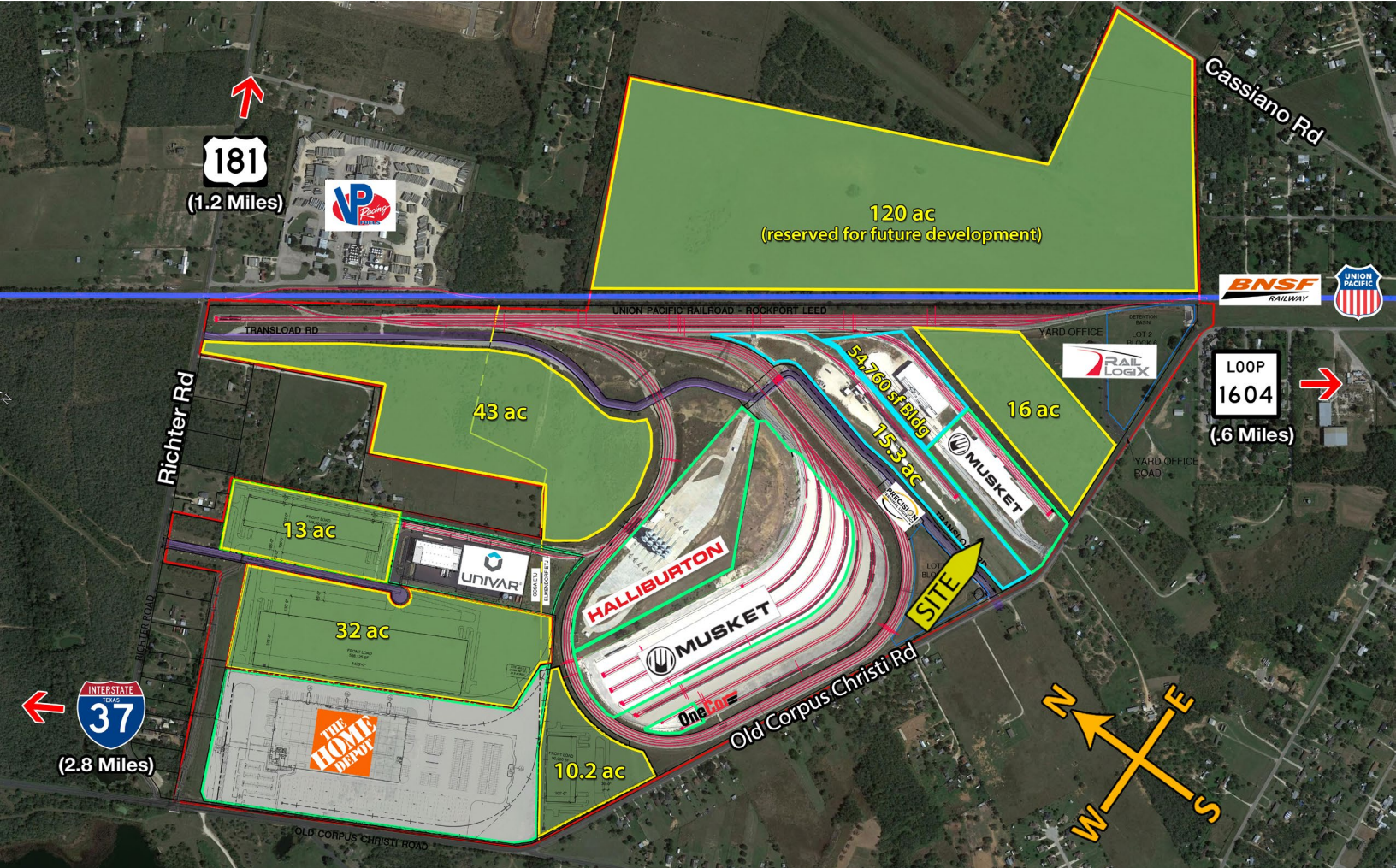
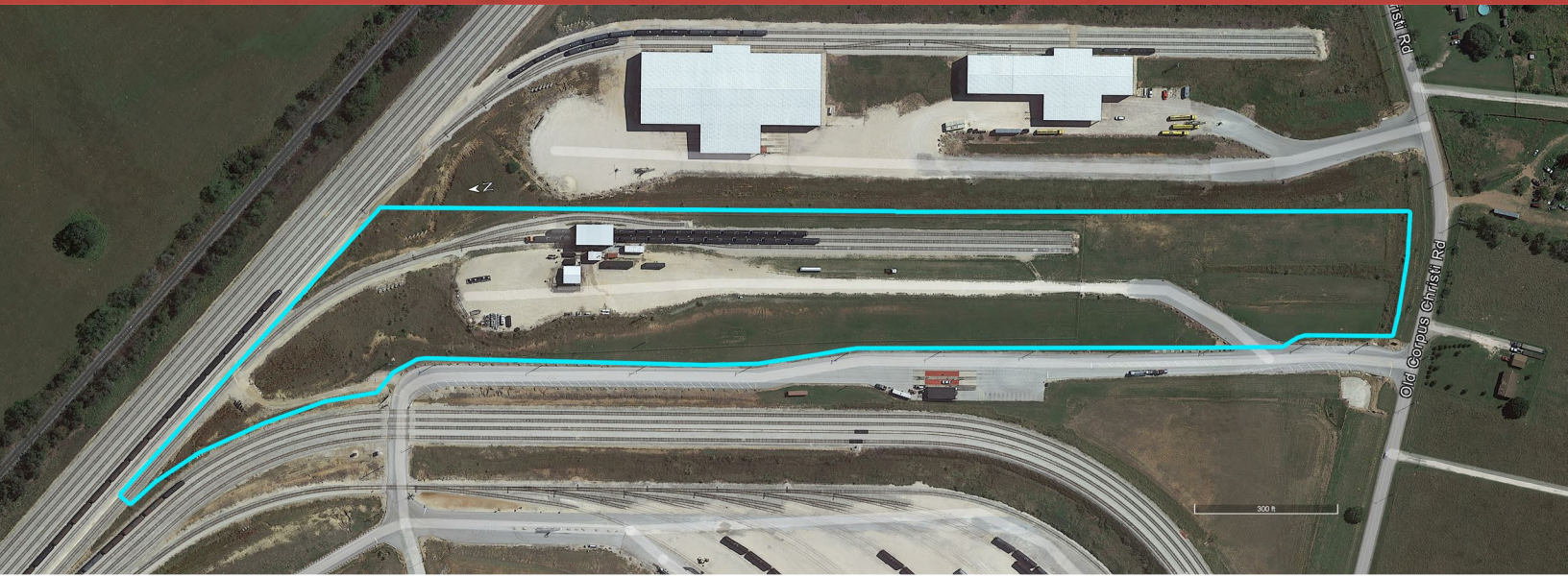


Real Estate Broker:



For Information:  
John Greg Turcotte  
210.710.8966  
[jg@turcotteres.com](mailto:jg@turcotteres.com)

FOR LEASE OR BUILD-TO-SUIT



Developer:



Rail Operator:

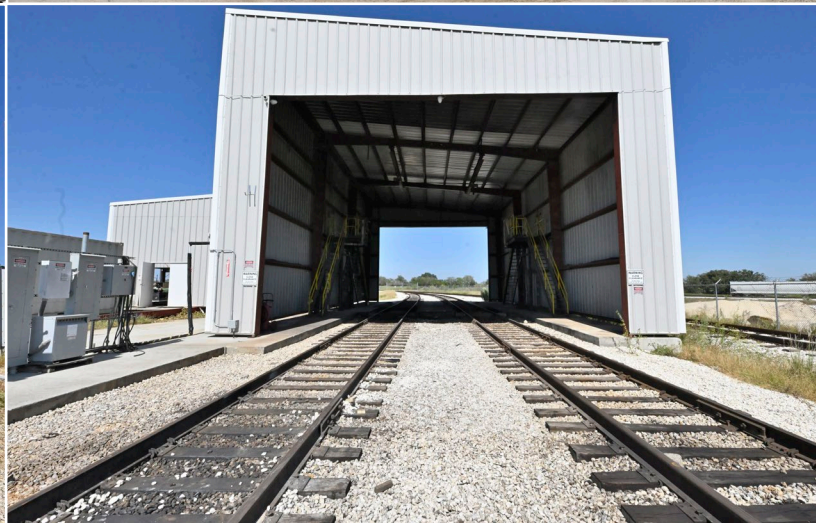


Real Estate Broker:



For Information:  
John Greg Turcotte  
210.710.8966  
[jg@turcotteres.com](mailto:jg@turcotteres.com)

FOR LEASE OR BUILD-TO-SUIT



Developer:



Rail Operator:



Real Estate Broker:



For Information:  
John Greg Turcotte  
210.710.8966  
[jg@turcotteres.com](mailto:jg@turcotteres.com)