



FOR LEASE

RETAIL SPACE AND GARAGE

2019 S Main Street, Waterbury, CT 06706



Broker Protected

**Opportunity to lease 4,143 sf Retail Space with Garage area
in Waterbury, CT for \$4,000 per month.**

HIGHLIGHTS

- Ample parking lot
- Easy highway access
- Drive in garage
- Private office
- Gas heat
- LED lighting
- Gross lease plus utilities
- Available immediately
- Flexible lease terms

JULIA SOUZA

C: (917) 676-8461

O: (860) 815-8800 Ext: 25

julia@doverbenedictgroup.com

J-R LALIBERTE

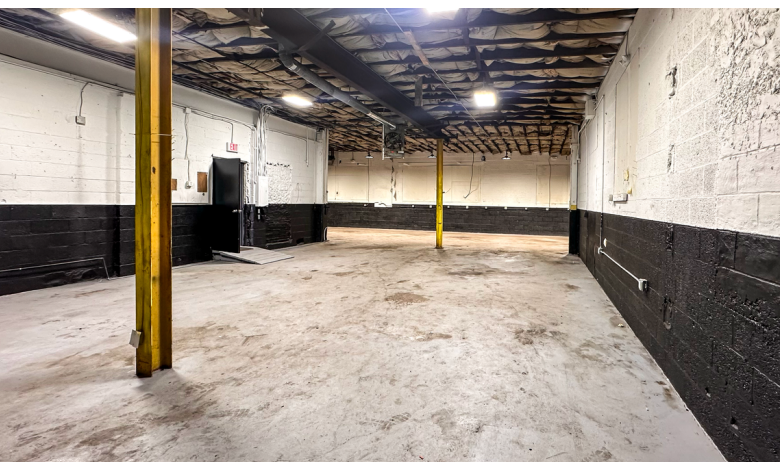
C: (860) 309-0378

O: (860) 815-8800 Ext: 18

jr@doverbenedictgroup.com

doverbenedictgroup.com

All information presented from sources is deemed reliable and is submitted subjected to errors, omissions, change of other terms of conditions, lease or withdrawal-all without notice.



JULIA SOUZA
C: (917) 676-8461
O: (860) 815-8800 Ext: 25
julia@doverbenedictgroup.com

J-R LALIBERTE
C: (860) 309-0378
O: (860) 815-8800 Ext: 18
jr@doverbenedictgroup.com

doverbenedictgroup.com

All information presented from sources is deemed reliable and is submitted subjected to errors, omissions, change of other terms of conditions, lease or withdrawal-all without notice.

FOR LEASE

RETAIL SPACE AND GARAGE

2019 S Main Street, Waterbury, CT 06706

the
dover
benedict
group

Broker's Protected



WE HAVE SPACES FOR ANY TYPE OF BUSINESS

Located in central Connecticut, The Dover Benedict Group is a commercial property holdings company focused on offering spaces to businesses of any size within Connecticut.

OFFICE | RETAIL | MEDICAL | HOSPITALITY | INDUSTRIAL | FLEX | SPECIALTY

Our vast variety of properties are always renovated with a great amount of pride to create a positive image for all of our tenants.

the
dover
benedict
group

doverbenedictgroup.com