

**FOR  
LEASE****AFFORDABLE OFFICE SUITES  
NEAR FUTURE SITE OF  
SENTARA HOSPITAL****WINCHESTER STATION OFFICE SUITES****Lease Rate:  
\$12.00 NNN****PROPERTY OVERVIEW**

Conveniently located on Halstead Blvd. near hotels, restaurants, the Coast Guard Base and Elizabeth City State University. Standard suites are 900 square feet with four individual offices, a reception area, kitchenette with refrigerator and microwave included. Units can be expanded up to several thousand square feet. Individual 10' x 12' offices are available for sole business operators and executives.

**DEMOGRAPHICS**

	<b>1 MILE</b>	<b>5 MILES</b>	<b>50 MILES</b>
<b>Households:</b>	1,421	11,080	585,584
<b>Population:</b>	3,479	30,492	1,568,064
<b>Avg HH Income:</b>	\$32,820	\$52,615	\$70,528

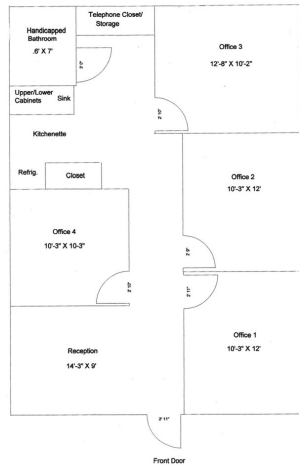
**PROPERTY HIGHLIGHTS**

- Units available from 880 to 4,400 SF
- Executive Offices - \$375 NNN per month
- LED Signage available on Halstead with 25,000 cars per day
- Near Sentara Hospital Future Site
- On-site Management
- Four offices and reception area
- Kitchenette with refrigerator & microwave
- Located in high growth area
- Close to U.S. Coast Guard Base, Elizabeth City State University, restaurants and hotels
- Central and secured postal box
- Safe and secure business complex

FOR FURTHER INFORMATION, PLEASE CONTACT:

**DAVID BICKFORD** • dbickford@divaris.com • 757.333.4351

# FOR LEASE



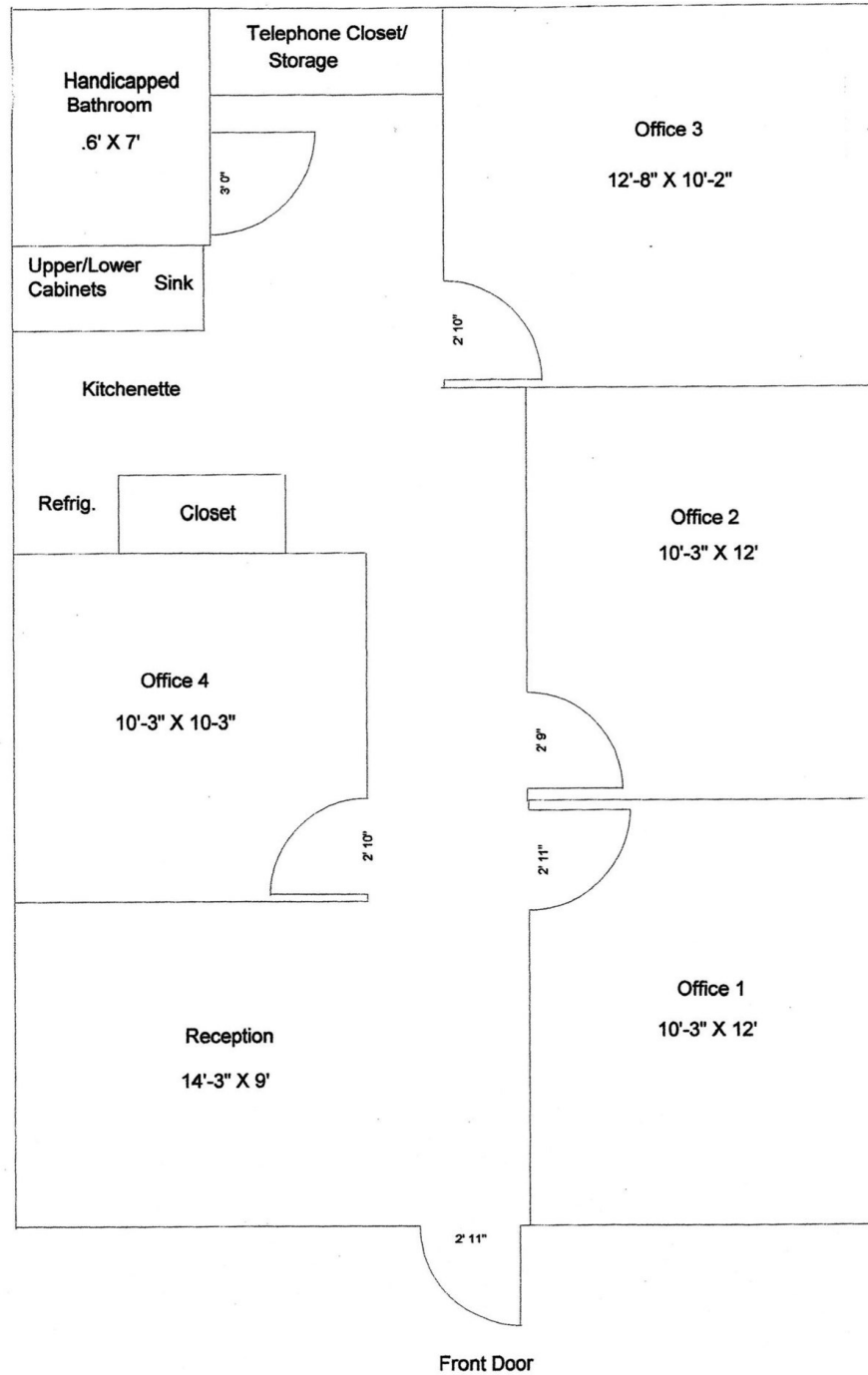
FOR FURTHER INFORMATION, PLEASE CONTACT:  
**DAVID BICKFORD** • [dbickford@divaris.com](mailto:dbickford@divaris.com) • 757.333.4351



# WINCHESTER STATION

905 HALSTEAD BLVD, ELIZABETH CITY, NC 27909

## TYPICAL FLOOR PLAN



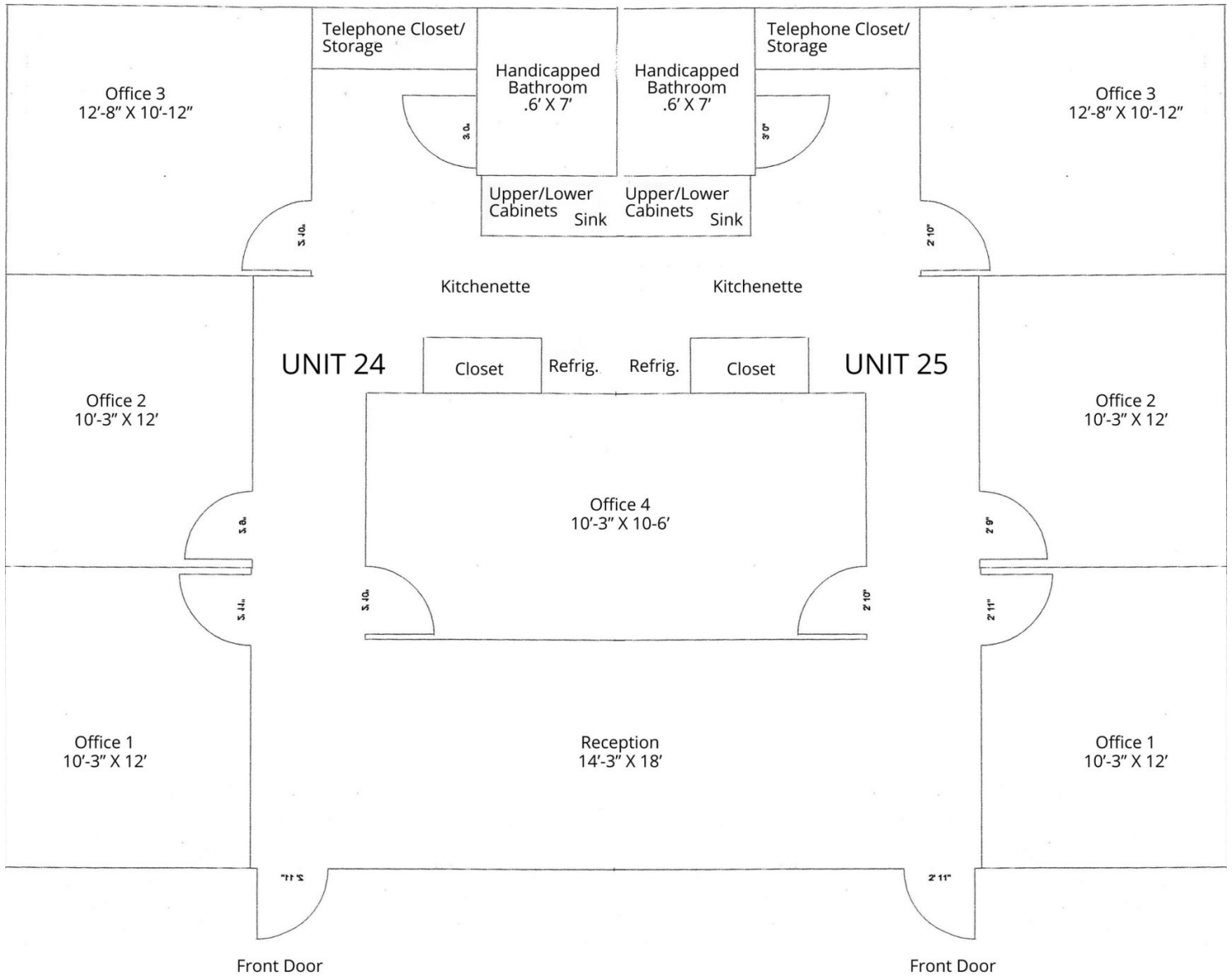
FOR FURTHER INFORMATION, PLEASE CONTACT:  
**DAVID BICKFORD** • dbickford@divaris.com • 757.333.4351



# WINCHESTER STATION

905 HALSTEAD BLVD, ELIZABETH CITY, NC 27909

## DOUBLE UNIT FLOOR PLAN



FOR FURTHER INFORMATION, PLEASE CONTACT:

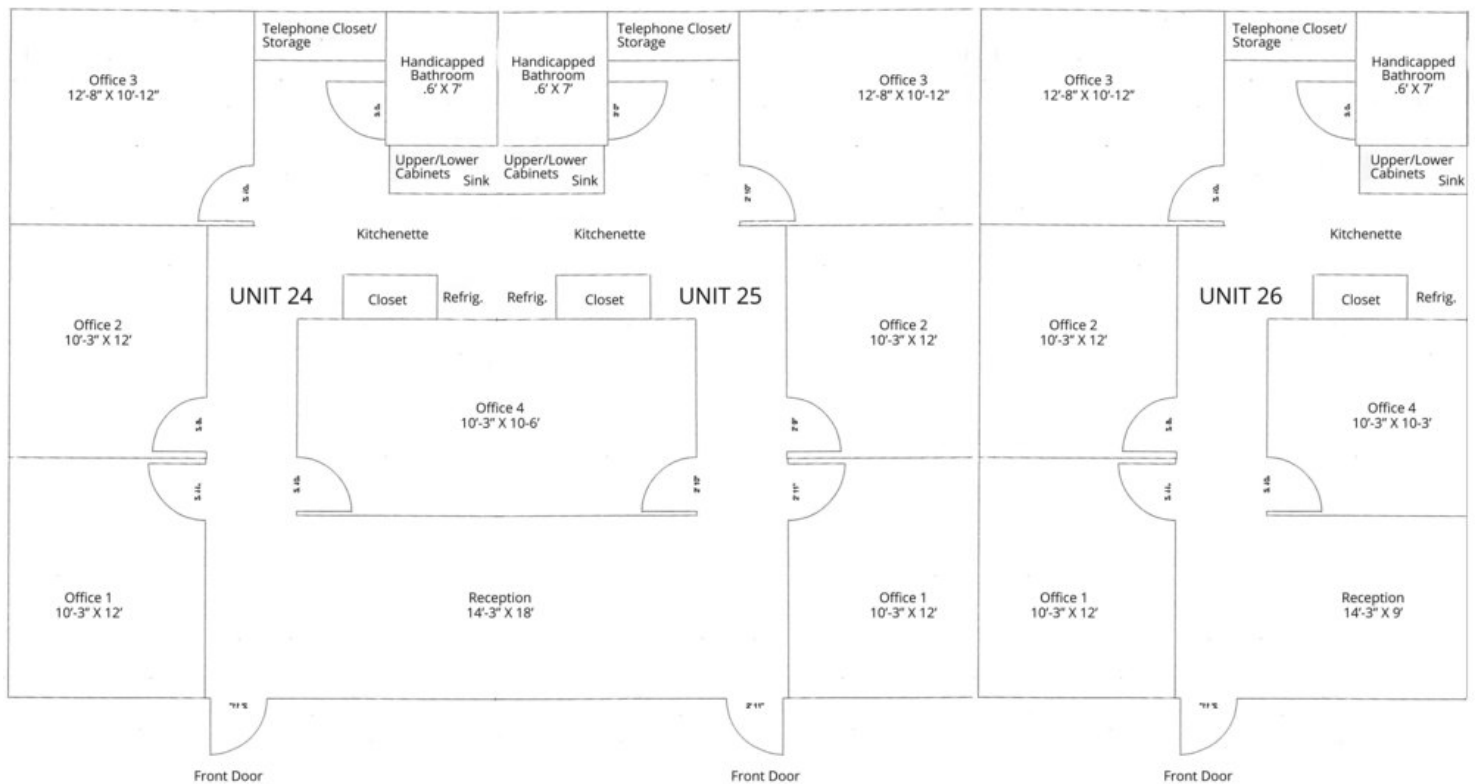
DAVID BICKFORD • dbickford@divaris.com • 757.333.4351



# WINCHESTER STATION

905 HALSTEAD BLVD, ELIZABETH CITY, NC 27909

## TRIPLE UNIT FLOOR PLAN



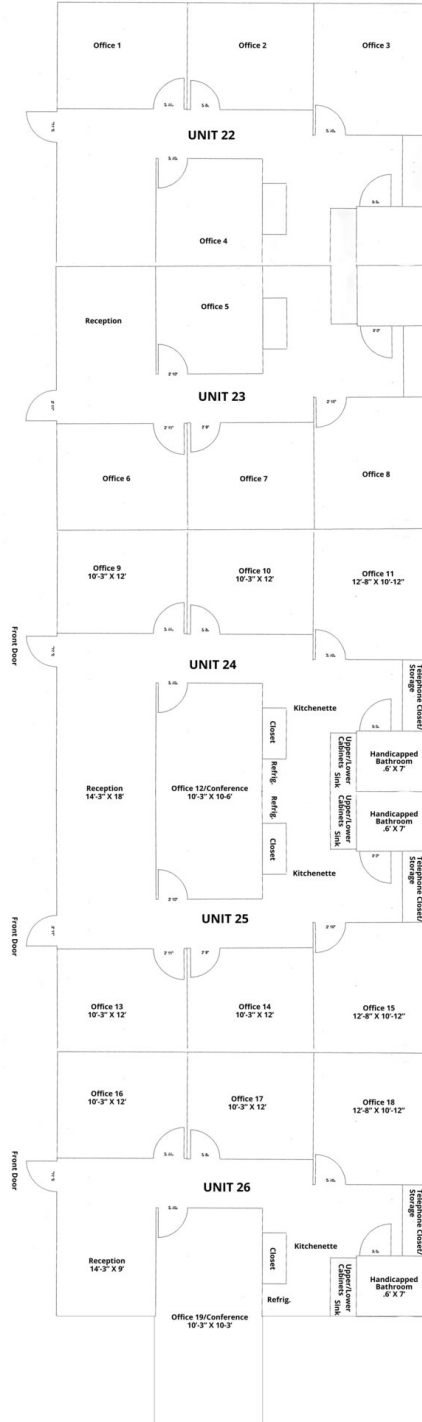
FOR FURTHER INFORMATION, PLEASE CONTACT:  
DAVID BICKFORD • [dbickford@divaris.com](mailto:dbickford@divaris.com) • 757.333.4351



# WINCHESTER STATION

905 HALSTEAD BLVD, ELIZABETH CITY, NC 27909

## QUINTUPLE FLOOR PLAN



FOR FURTHER INFORMATION, PLEASE CONTACT:  
DAVID BICKFORD • dbickford@divaris.com • 757.333.4351

