

9/10

SOUTH FIFTH/FOURTH AVENUE MOUNT VERNON, BRONX

Between West First & Second Streets

RETAIL FOR LEASE

APPROXIMATE SIZE

9 South Fifth Avenue:
2,375 SF

10 South Fourth Avenue:
1st-2nd Floors: 1,875 SF
3rd-5th Floors: 2,125 SF

ASKING RENT

Upon Request

POSSESSION

Immediate

TERM

Negotiable

FRONTAGE

25 FT

COMMENTS

- 30 minute Metro North Train ride to 125th Street Train Station
- Zoned downtown residential & opportunity zone with incredible development opportunity
- Prime location in City Center retail corridor
- Steps from City Hall

NEIGHBORS

Rainbow • Alfredo's Pizza • Chase • Snipes •
Metro by T-Mobile • Nail Care • Wig Topia • Pine
Cleaners • Furniture Fair • Cricket Wireless

TRANSPORTATION

Mount Vernon East: New Canaan and New Haven Line

Mount Vernon West: Harlem Line



JAMES FAMULARO

President

DANNY HEREDIA

Associate

212.468.5905

dheredia@meridiancapital.com

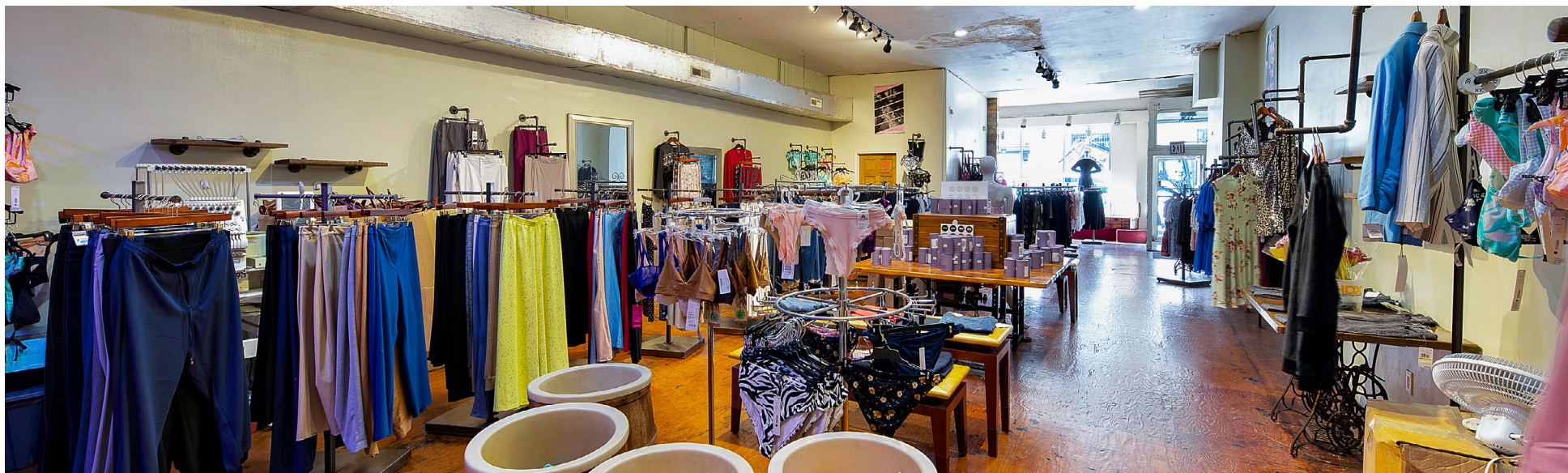
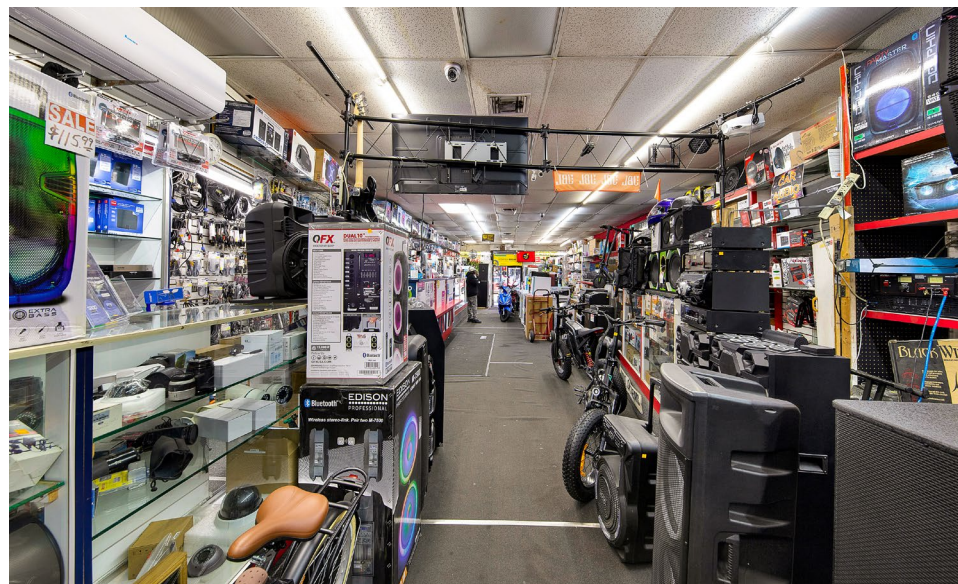


MERIDIAN
RETAIL LEASING

All information supplied is from sources deemed reliable and is furnished subject to errors, omissions, modifications, removal of the listing from sale or lease, and to any listing conditions, including the rates and manner of payment of commissions for particular offerings imposed by Meridian Capital Group. This information may include estimates and projections prepared by Meridian Capital Group with respect to future events, and these future events may or may not actually occur. Such estimates and projections reflect various assumptions concerning anticipated results. While Meridian Capital Group believes these assumptions are reasonable, there can be no assurance that any of these estimates and projections will be correct. Therefore, actual results may vary materially from these estimates and projections. Any square footage dimensions set forth are approximate.

9 SOUTH FIFTH AVENUE / 10 SOUTH FOURTH AVENUE
MOUNT VERNON, BRONX | Between West First and Second Streets

RETAIL FOR LEASE



INTERIOR

JAMES FAMULARO
President

DANNY HEREDIA
Associate
212.468.5905
dheredia@meridiancapital.com

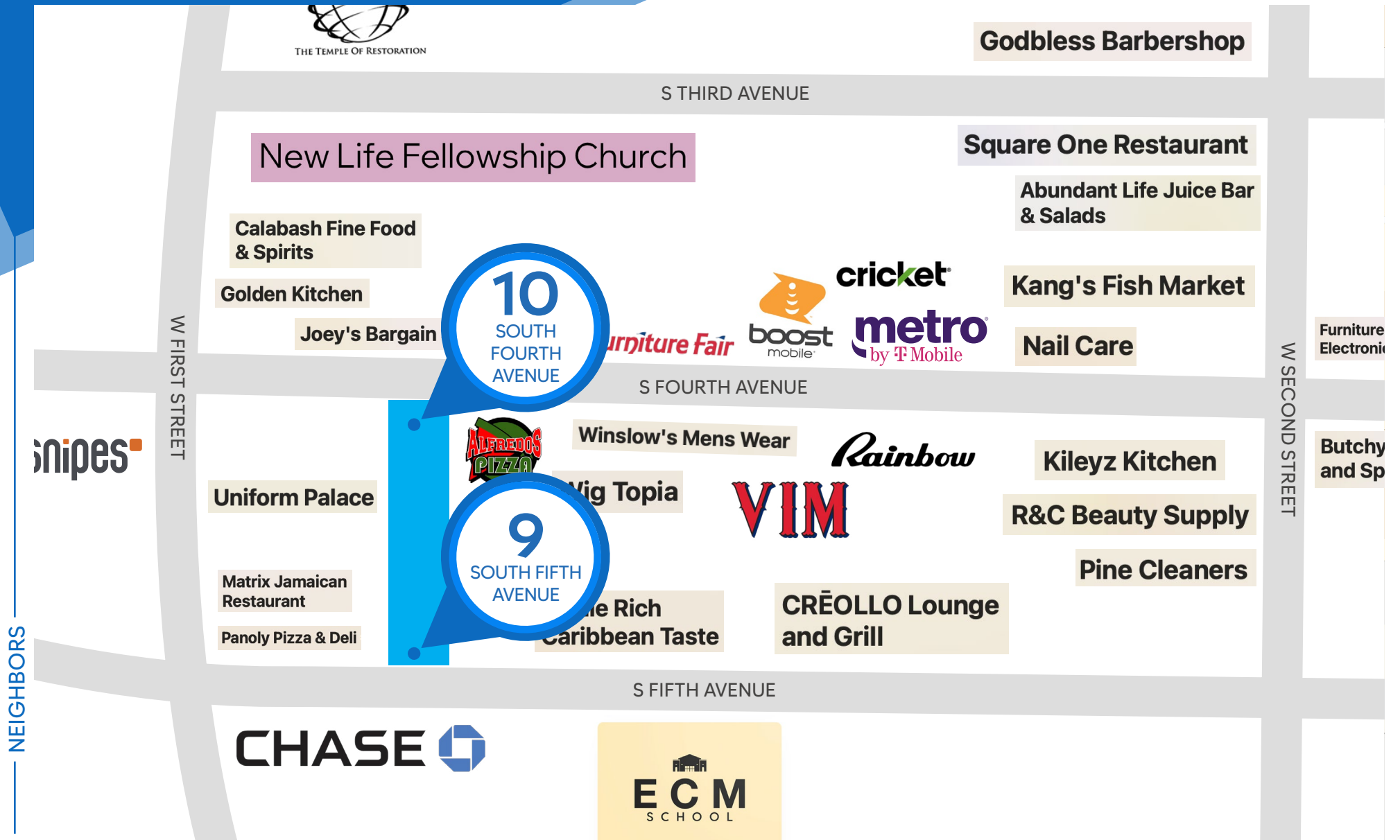


MERIDIAN
RETAIL LEASING

All information supplied is from sources deemed reliable and is furnished subject to errors, omissions, modifications, removal of the listing from sale or lease, and to any listing conditions, including the rates and manner of payment of commissions for particular offerings imposed by Meridian Capital Group. This information may include estimates and projections prepared by Meridian Capital Group with respect to future events, and these future events may or may not actually occur. Such estimates and projections reflect various assumptions concerning anticipated results. While Meridian Capital Group believes these assumptions are reasonable, there can be no assurance that any of these estimates and projections will be correct. Therefore, actual results may vary materially from these estimates and projections. Any square footage dimensions set forth are approximate.

9 SOUTH FIFTH AVENUE / 10 SOUTH FOURTH AVENUE
MOUNT VERNON, BRONX | Between West First and Second Streets

RETAIL FOR LEASE



JAMES FAMULARO
President

DANNY HEREDIA
Associate
212.468.5905
dheredia@meridiancapital.com



MERIDIAN
RETAIL LEASING

All information supplied is from sources deemed reliable and is furnished subject to errors, omissions, modifications, removal of the listing from sale or lease, and to any listing conditions, including the rates and manner of payment of commissions for particular offerings imposed by Meridian Capital Group. This information may include estimates and projections prepared by Meridian Capital Group with respect to future events, and these future events may or may not actually occur. Such estimates and projections reflect various assumptions concerning anticipated results. While Meridian Capital Group believes these assumptions are reasonable, there can be no assurance that any of these estimates and projections will be correct. Therefore, actual results may vary materially from these estimates and projections. Any square footage dimensions set forth are approximate.