

WANDO COMMONS

498 WANDO PARK BLVD | MT PLEASANT, SC 29464



FOR LEASE



Contact us:

Jeremy Willits
Senior Vice President
+1.843.270.9205

jeremy.willits@harborcommercialpartners.com

Gerry Schauer, CCIM
Partner
+1.843.364.2055

gerry.schauer@harborcommercialpartners.com

WANDO COMMONS

498 WANDO PARK BLVD | MT PLEASANT, SC 29464

PROPERTY INFORMATION

TAX MAP ID	537-00-00-043
COUNTY	CHARLESTON
ZONING	COMMERCIAL
BUILDING SIZE	12,000 SF
AVAILABLE SF	1,310 - 2,263 SF

OFFERING

UNIT	SIZE	LEASE RATE	LEASE TYPE	AVAILABLE
1001	1,310 SF	\$24 PSF	NNN	NOW
1004	2,263 SF	\$24 PSF	NNN	NOW

HIGHLIGHTS

Known as the Wando Commons, this is a 4-building office park offering attractive single-story brick buildings in a handsome campus setting. Wando Commons provides your clients and employees the convenience of immediate access to Interstate 526, Mount Pleasant and the greater Charleston area. There are many nearby restaurants, a Starbucks, shopping and numerous other amenities for your employees to enjoy, all just minutes away.

Wando Commons provides an inviting work experience for your company employees and their visitors, all at an economical price. On-site parking is provided.

Tenants are responsible for utilities and janitorial services. Taxes, Insurance, and Common area maintenance fees are \$5.94 PSF.

Come and enjoy the convenience and value of Wando Commons!



Contact us:

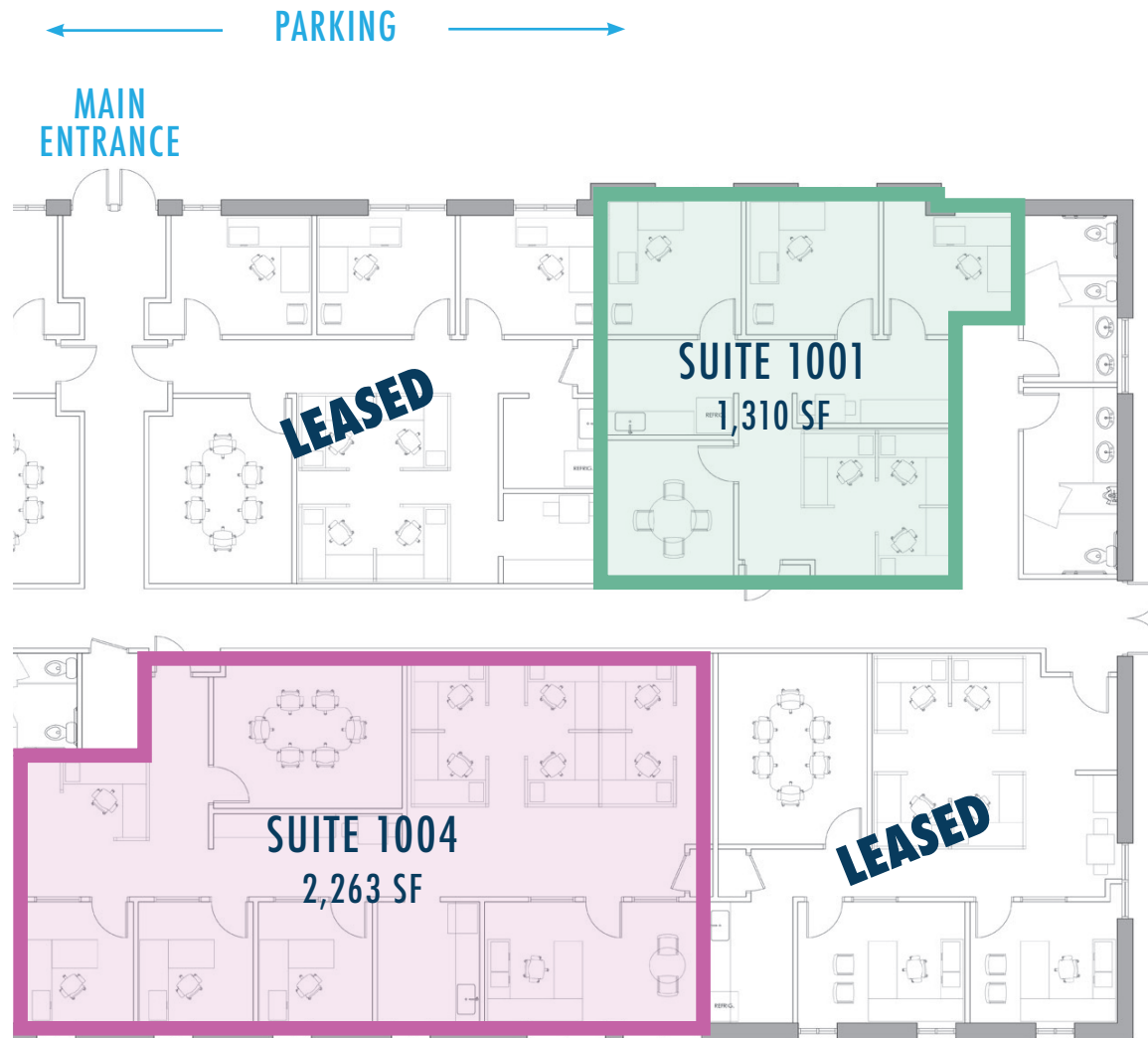
Jeremy Willits
Senior Vice President
+1.843.270.9205
jeremy.willits@harborcommercialpartners.com

Gerry Schauer, CCIM
Partner
+1.843.364.2055
gerry.schauer@harborcommercialpartners.com

WANDO COMMONS

498 WANDO PARK BLVD | MT PLEASANT, SC 29464

FLOOR PLANS



Contact us:

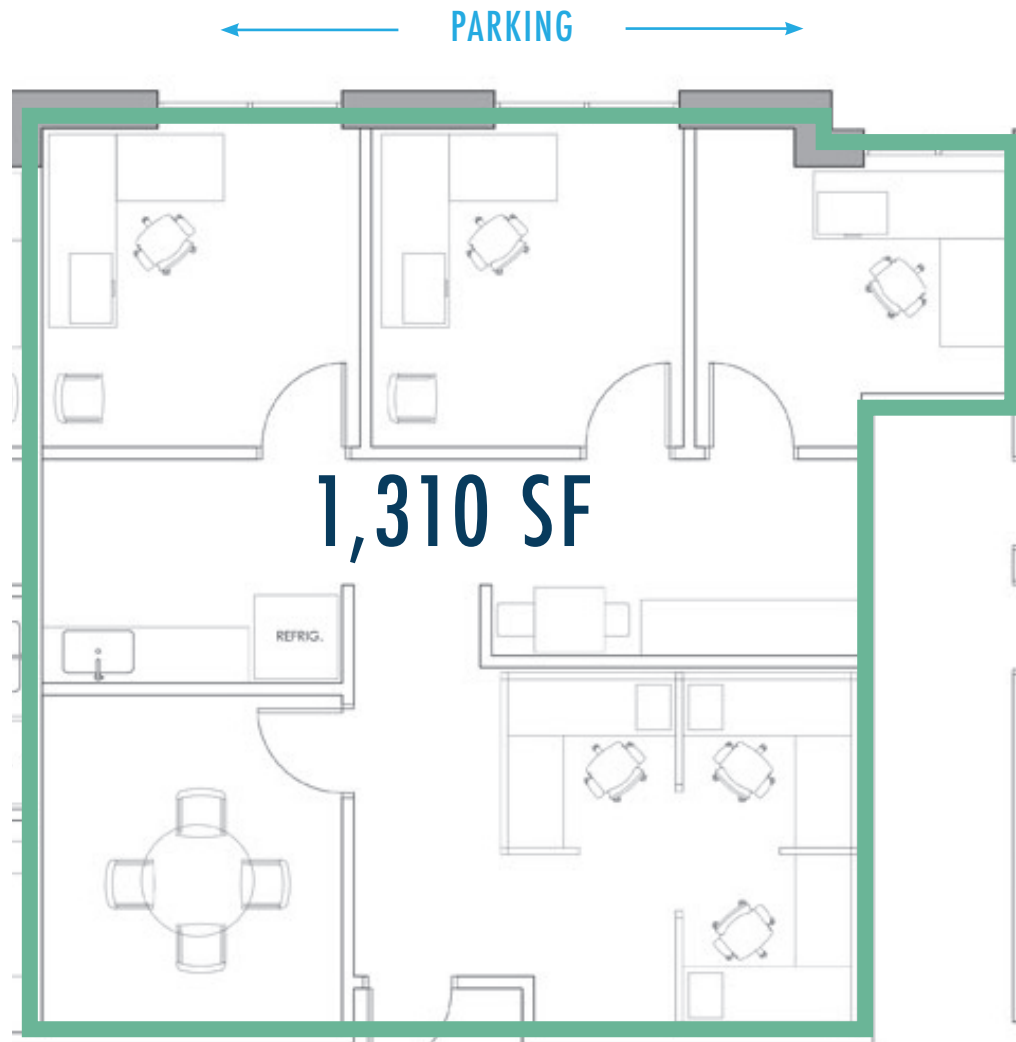
Jeremy Willits
Senior Vice President
+1.843.270.9205
jeremy.willits@harborcommercialpartners.com

Gerry Schauer, CCIM
Partner
+1.843.364.2055
gerry.schauer@harborcommercialpartners.com

WANDO COMMONS

498 WANDO PARK BLVD | MT PLEASANT, SC 29464

SUITE 1001



*Furniture shown is suggested layout and is not included in rental.



Contact us:

Jeremy Willits
Senior Vice President
+1.843.270.9205
jeremy.willits@harborcommercialpartners.com

Gerry Schauer, CCIM
Partner
+1.843.364.2055
gerry.schauer@harborcommercialpartners.com

WANDO COMMONS

498 WANDO PARK BLVD | MT PLEASANT, SC 29464

SUITE 1004

← PARKING →

*Furniture shown is suggested layout and is not included in rental.



Contact us:

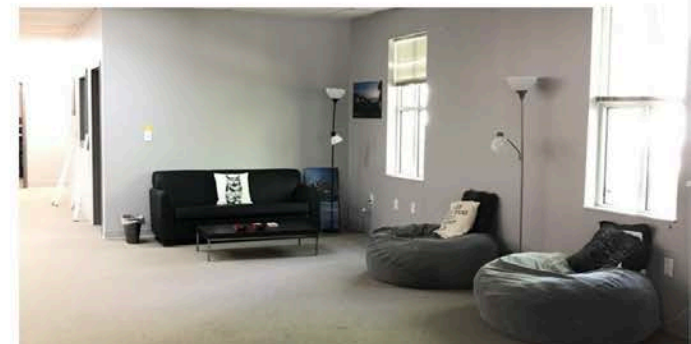
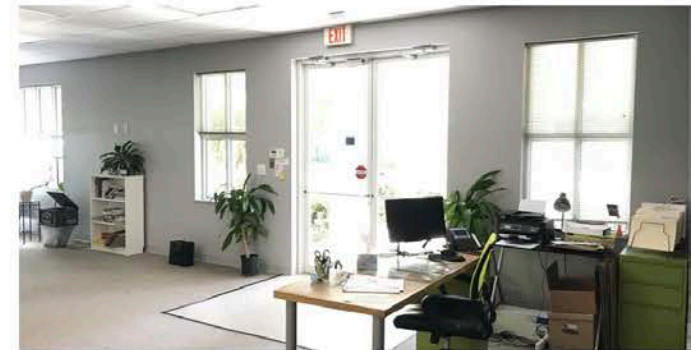
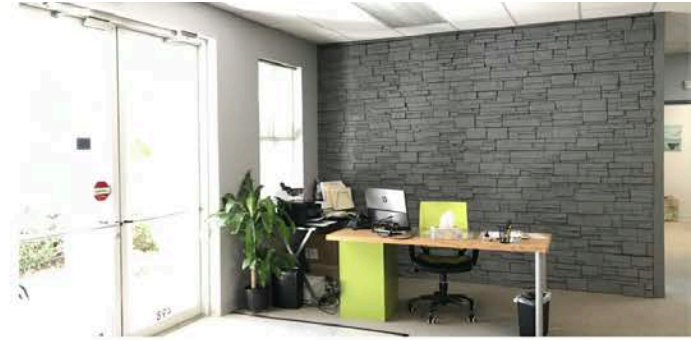
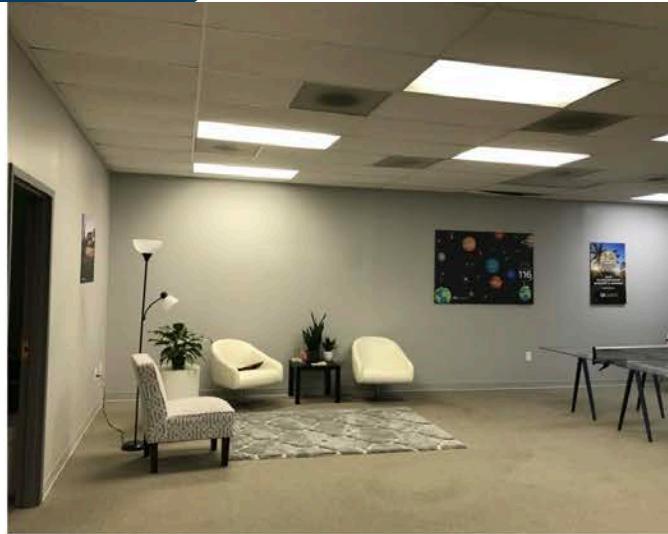
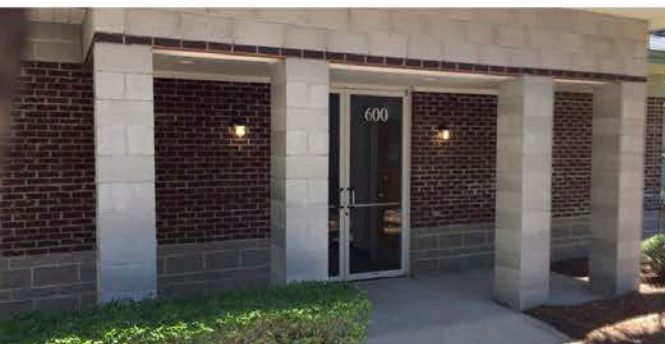
Jeremy Willits
Senior Vice President
+1.843.270.9205
jeremy.willits@harborcommercialpartners.com

Gerry Schauer, CCIM
Partner
+1.843.364.2055
gerry.schauer@harborcommercialpartners.com

WANDO COMMONS

498 WANDO PARK BLVD | MT PLEASANT, SC 29464

PHOTOS



Contact us:

Jeremy Willits
Senior Vice President
+1.843.270.9205

jeremy.willits@harborcommercialpartners.com

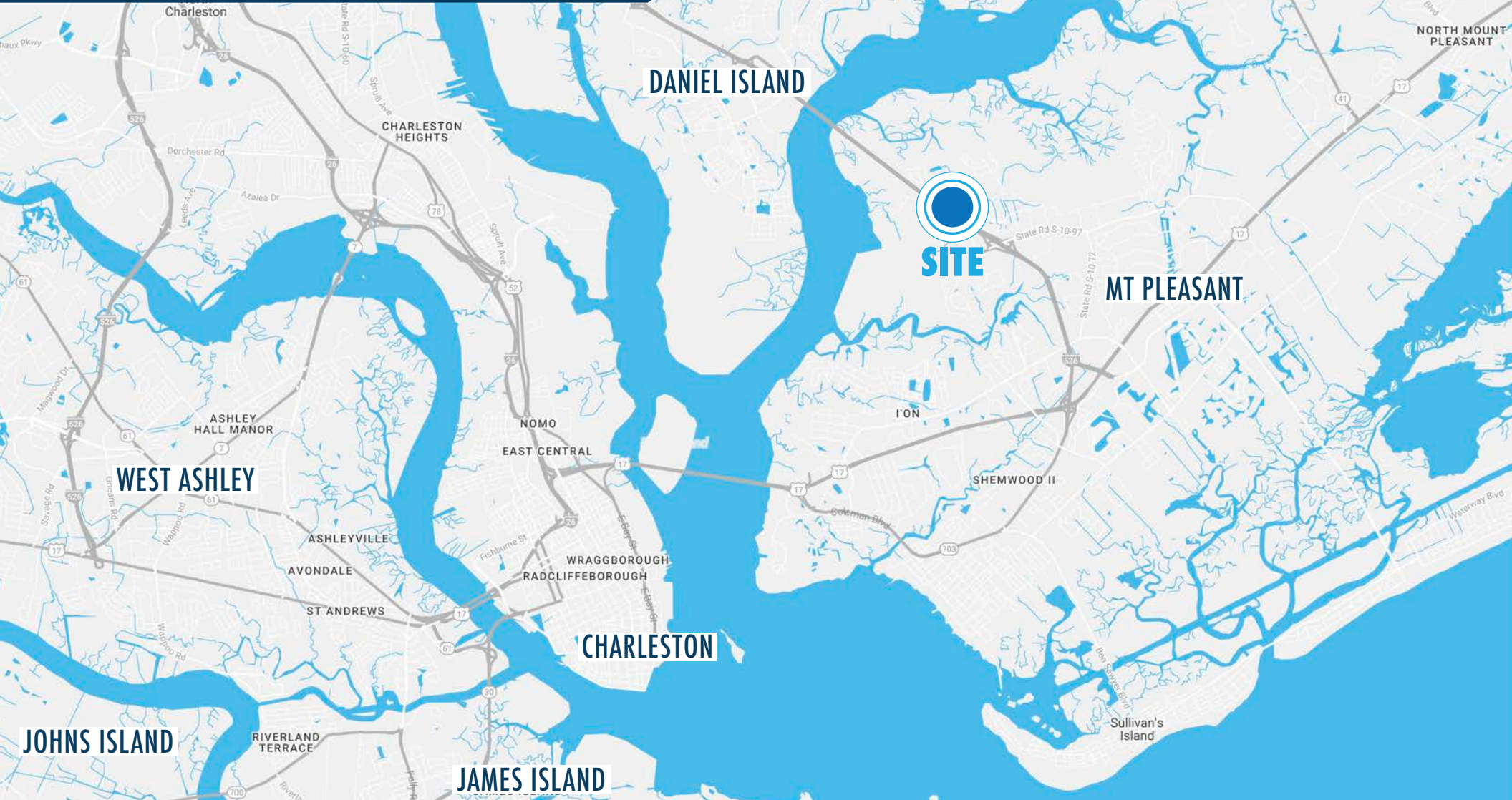
Gerry Schauer, CCIM
Partner
+1.843.364.2055

gerry.schauer@harborcommercialpartners.com

WANDO COMMONS

498 WANDO PARK BLVD | MT PLEASANT, SC 29464

LOCATION



Contact us:

Jeremy Willits
Senior Vice President
+1.843.270.9205
jeremy.willits@harborcommercialpartners.com

Gerry Schauer, CCIM
Partner
+1.843.364.2055
gerry.schauer@harborcommercialpartners.com

WANDO COMMONS

498 WANDO PARK BLVD | MT PLEASANT, SC 29464

AMENITIES



Contact us:

Jeremy Willits
Senior Vice President
+1.843.270.9205

jeremy.willits@harborcommercialpartners.com

Gerry Schauer, CCIM
Partner
+1.843.364.2055

gerry.schauer@harborcommercialpartners.com

WANDO COMMONS

498 WANDO PARK BLVD | MT PLEASANT, SC 29464



Contact us:

146 Williman Street, Units 300 & 400
Charleston, SC 29403

www.harborcommercialpartners.com

+1.843.994.7198



Jeremy Willits

Senior Vice President

+1.843.270.9205

jeremy.willits@harborcommercialpartners.com



Gerry Schauer, CCIM

Partner

+1.843.364.2055

gerry.schauer@harborcommercialpartners.com

The information contained herein has been given to us by sources we deem reliable but we make no guarantees. All information should be verified prior to purchase or lease.