



5000 NASA Boulevard

FAIRMONT, WV 26554



Overview

- ❖ Total Available Space: 73,277 SQ FT
- ❖ Total Available Suites: 8
- ❖ Minimum Available Space: 1,622 SQ FT
- ❖ Situated in the I-79 High Technology Corridor, just south of Fairmont, West Virginia, the High Technology Park offers strategic access. Its location allows for a one-day drive to 60% of the US population and major cities such as New York, Boston, and Chicago. Convenient access to I-79, Exit 132, is available 0.8 miles southeast. The park and its buildings enjoy high visibility from I-79 traffic.

At 5000 NASA Blvd, within the I-79 Technology Park, a 128,000 sq. ft. building offers various office suites. Suites range from approximately 1,622 to 15,351 sq. ft. The building is divided into North and South Towers, each with two elevators. Signage and ample parking are available.

Photos



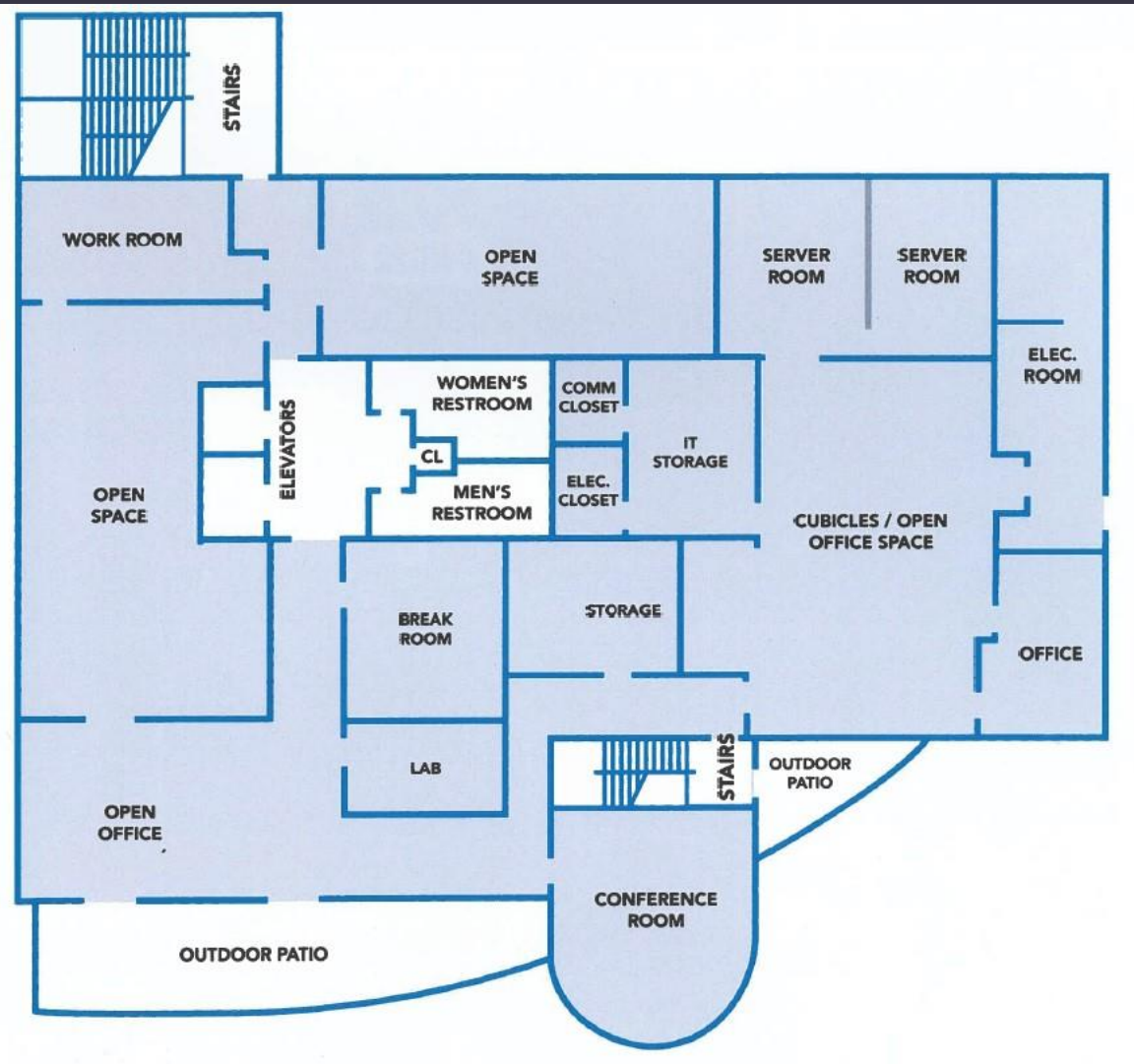
Photos



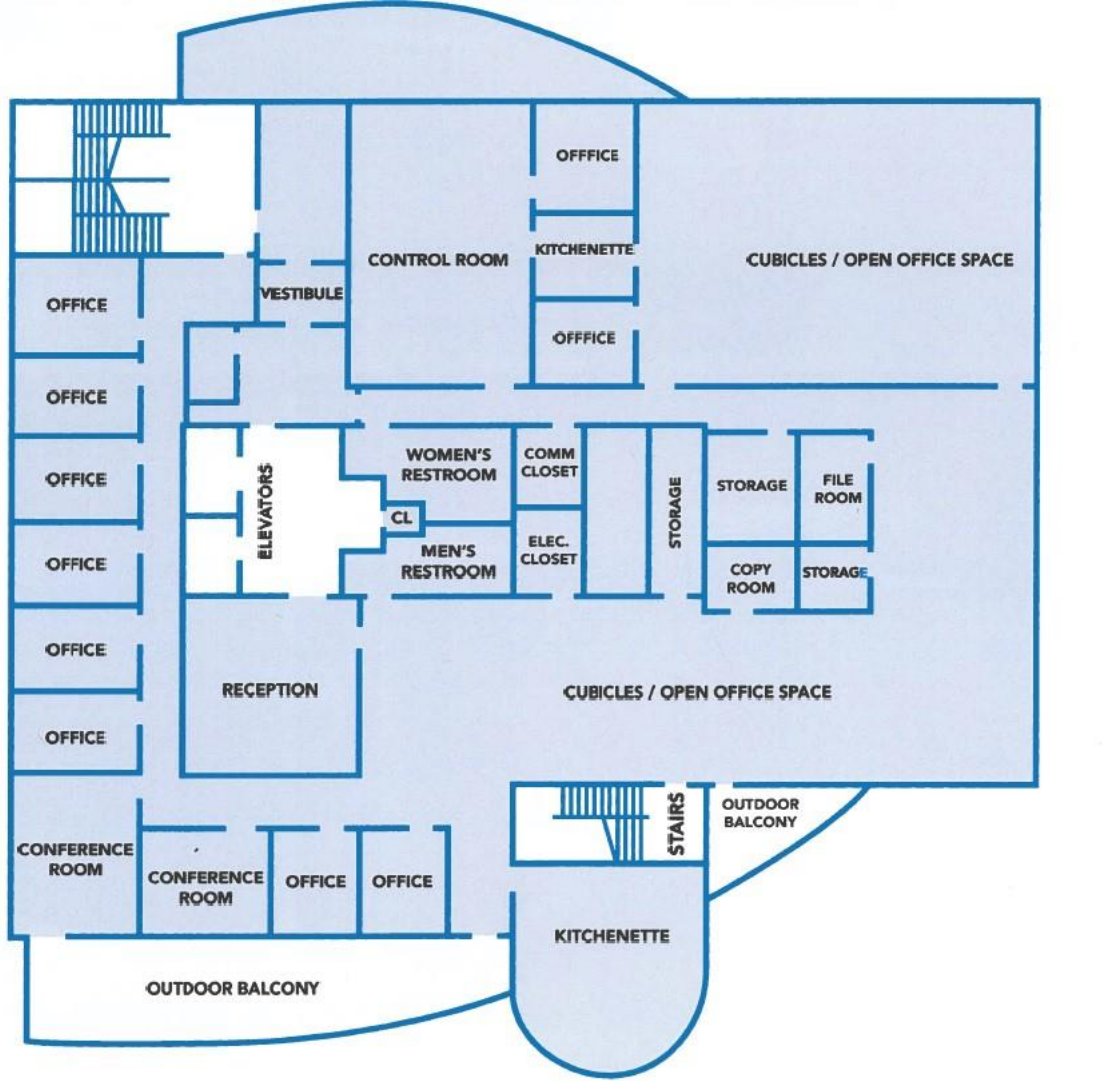
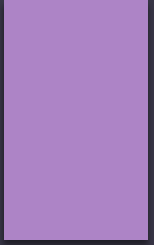
Spaces Available

| Lease Type | Lease Rate Type |
|------------|------------------|
| Direct | Triple Net (NNN) |

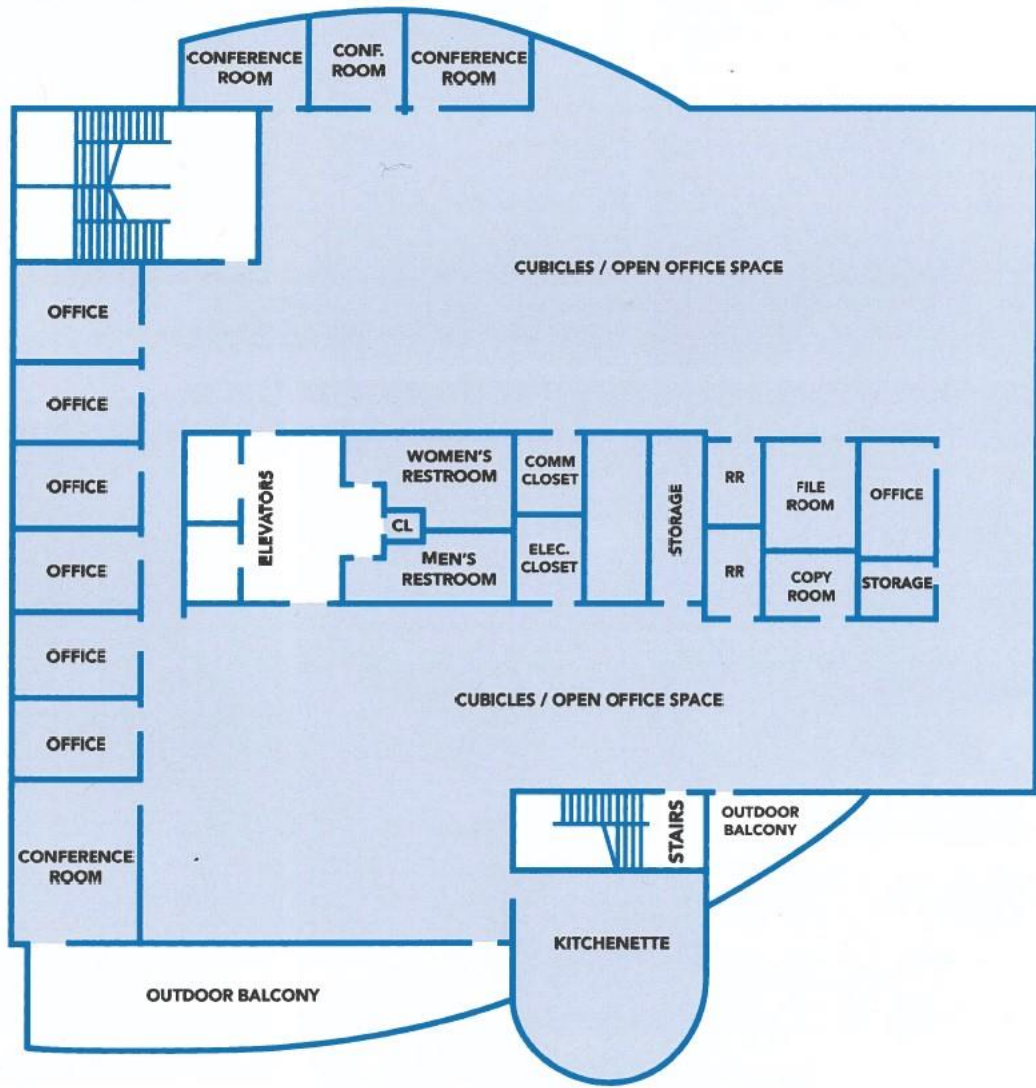
| Suite/Floor: | SF / \$\$SQFT | Status: |
|--|-------------------------|-----------|
| Suite 2000 N. Tower 1 st Floor | 5,500SF \$15.50/SQFT | Available |
| Suite 2200 N. Tower 2 nd Floor | 12,500SF \$15.50/SQFT | Available |
| Suite 2300 N. Tower 3 rd Floor | 14,793SF \$15.50/SQFT | Available |
| Suite 2400 N. Tower 4 th Floor | 14,741SF \$15.50/SQFT | Available |
| Suite 110 S. Tower 1 st Floor | 4,950SF \$15.50/SQFT | Available |
| Suite 1320 S. Tower 3 rd Floor | 3,770SF \$15.50SQFT | Available |
| Suite 1350 S. Tower 3 rd Floor | 1,622SF \$15.50SQFT | Available |
| Suite 1400 S. Tower 4 th Floor | 15,351SF \$15.50SQFT | Available |
| Suite 3000 N & S Tower 5 th Floor | 10,587SF \$15.50SQFT | Available |



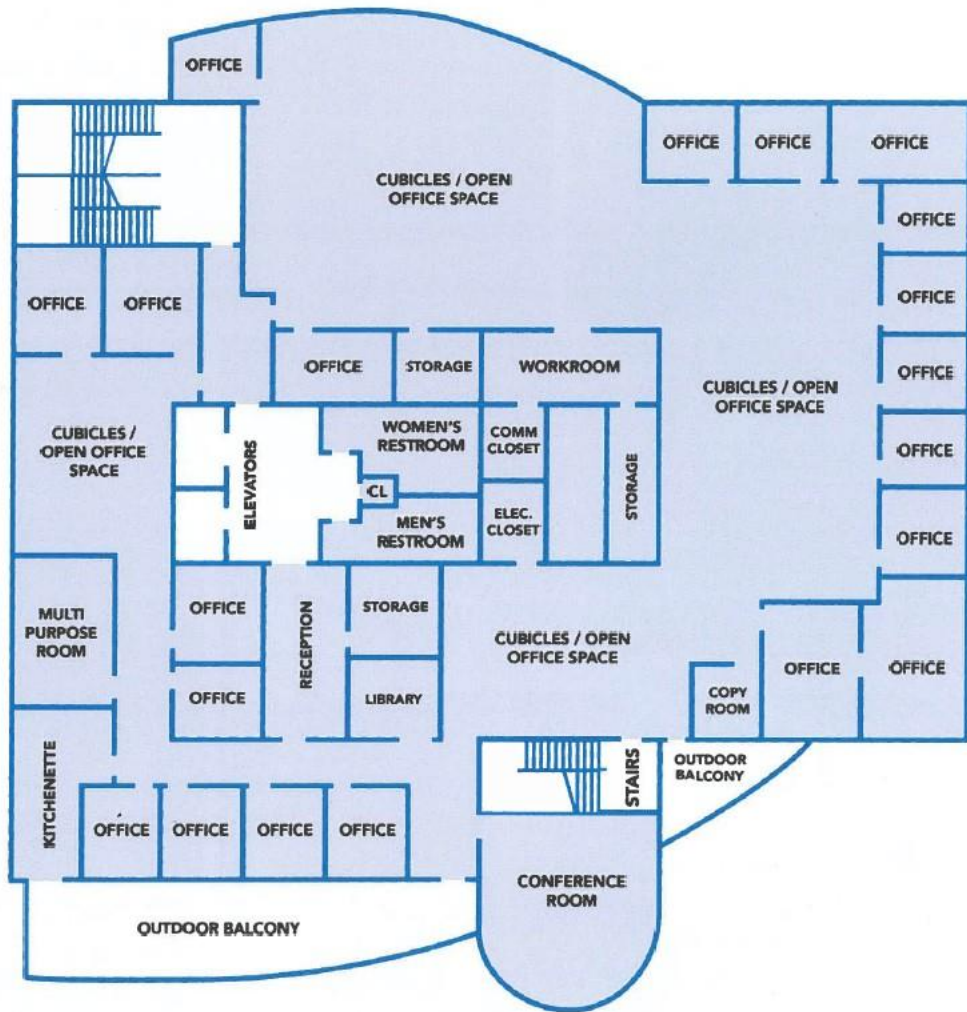
❖ Suite 2100— North Tower First Floor – 5,500 SQ FT



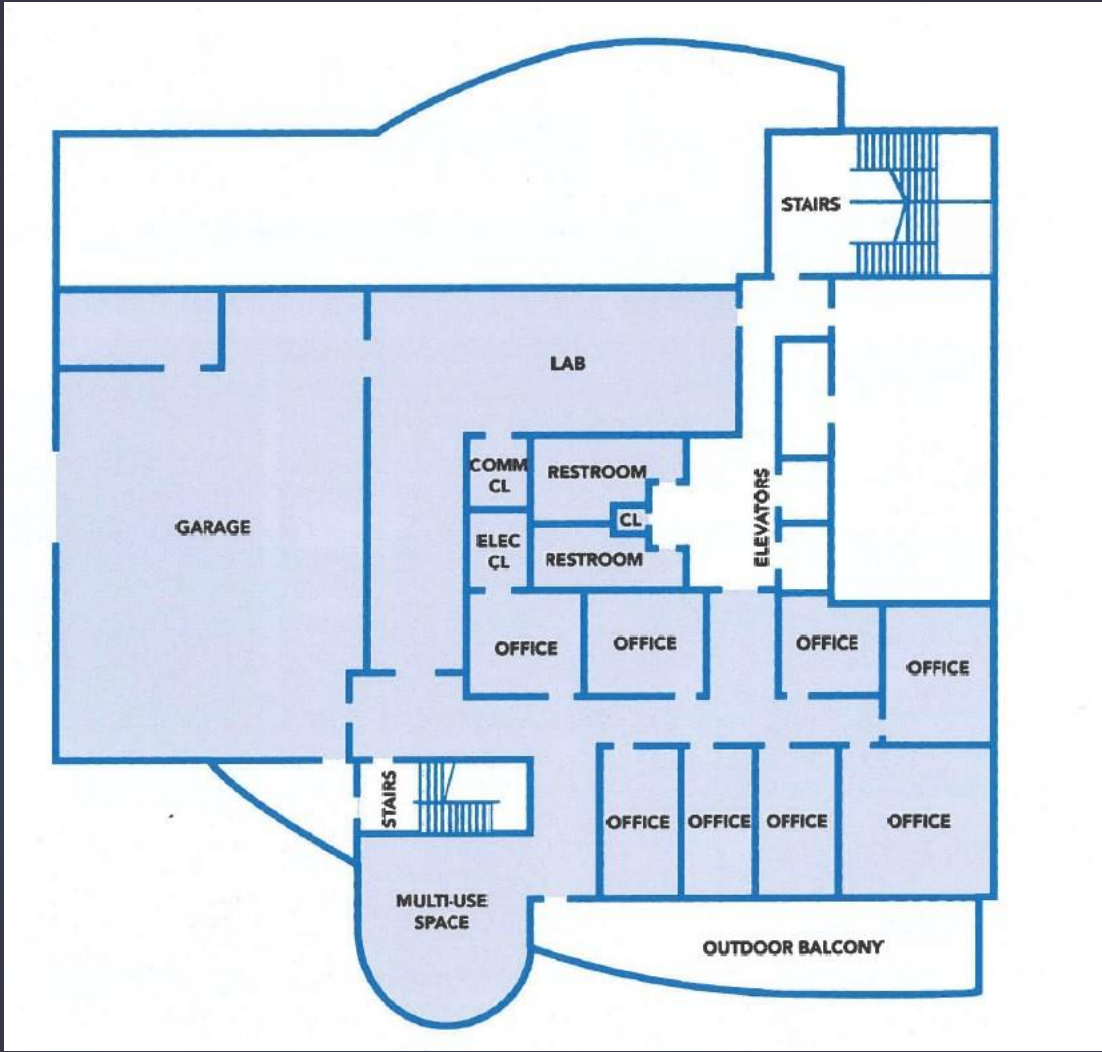
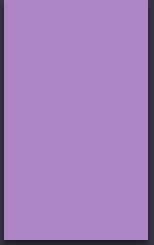
❖ Suite 2200 North Tower Second Floor 12,500 SQ FR



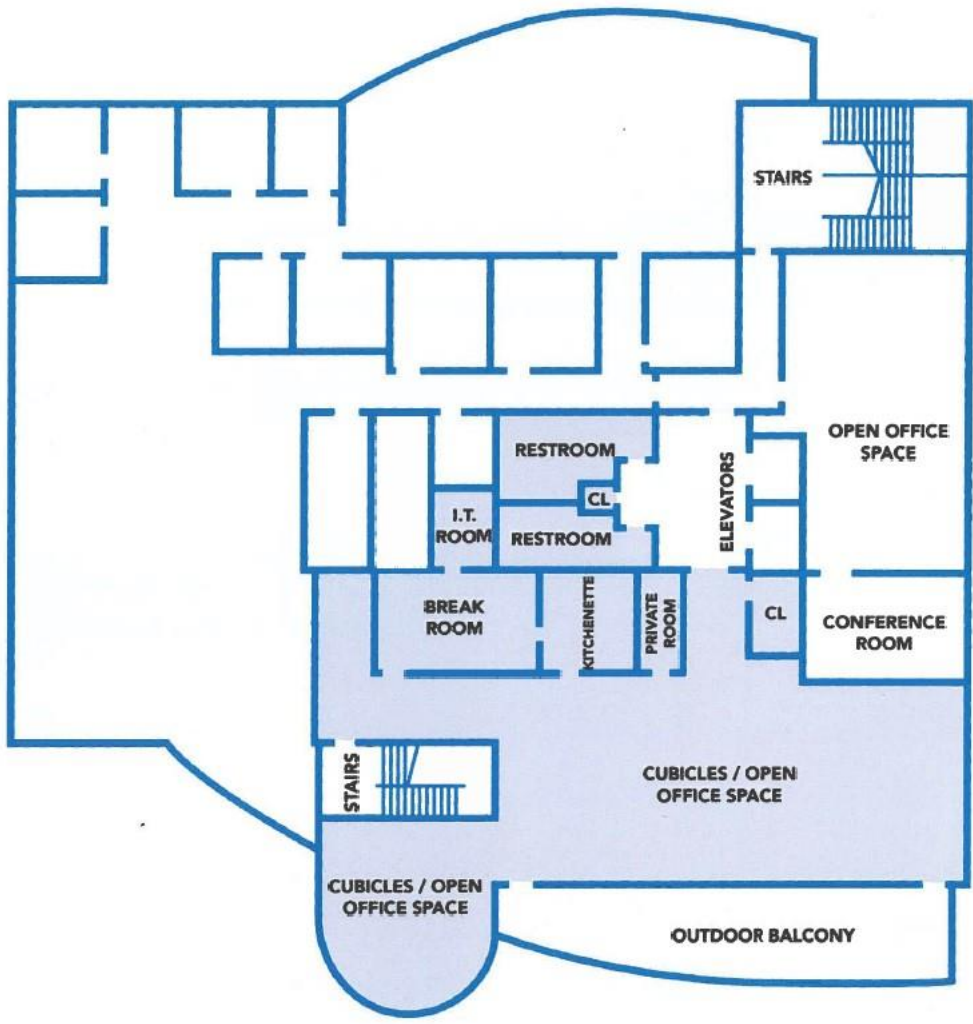
❖ Suite 2300 North Tower Third Floor 14,792 SQ FT



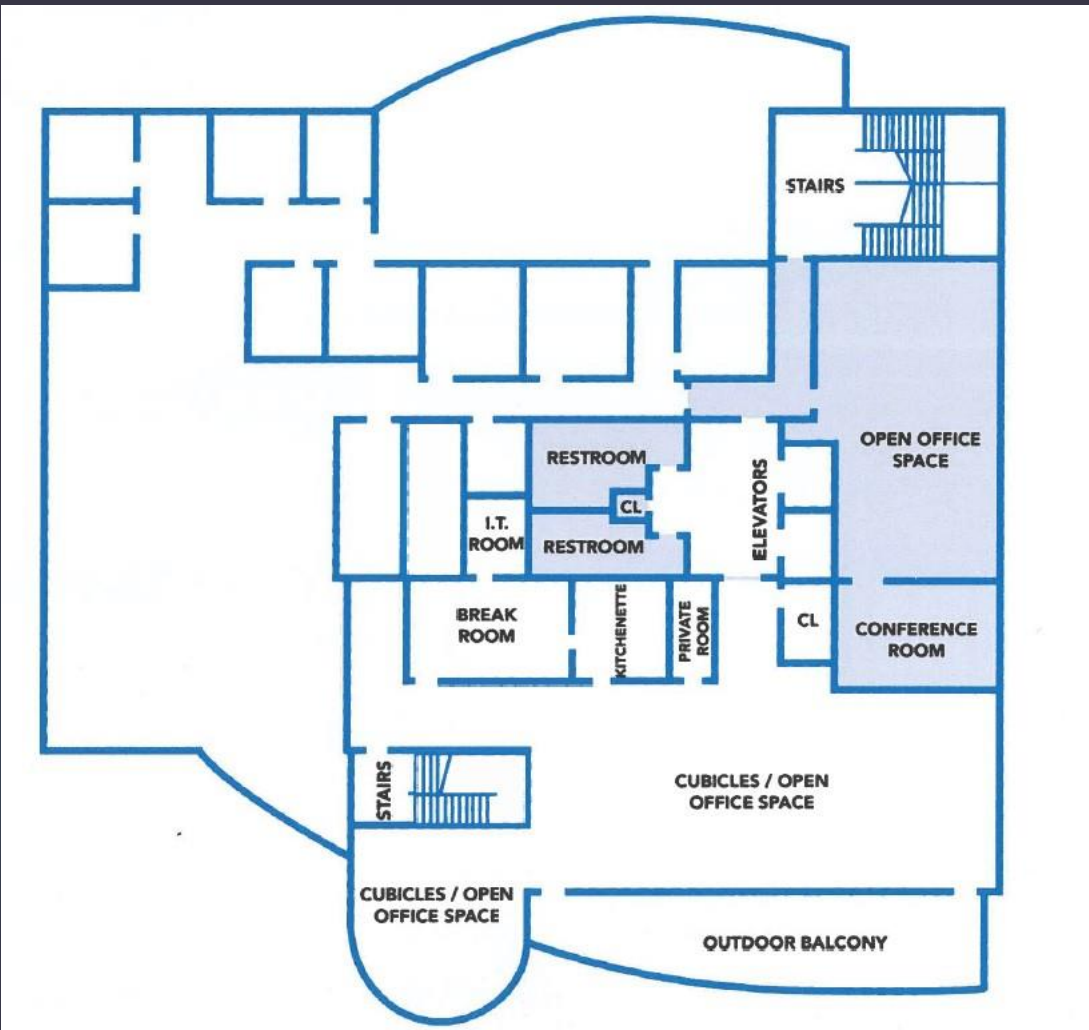
❖ Suite 2400 North Tower Fourth Floor 14,740 SQ FT



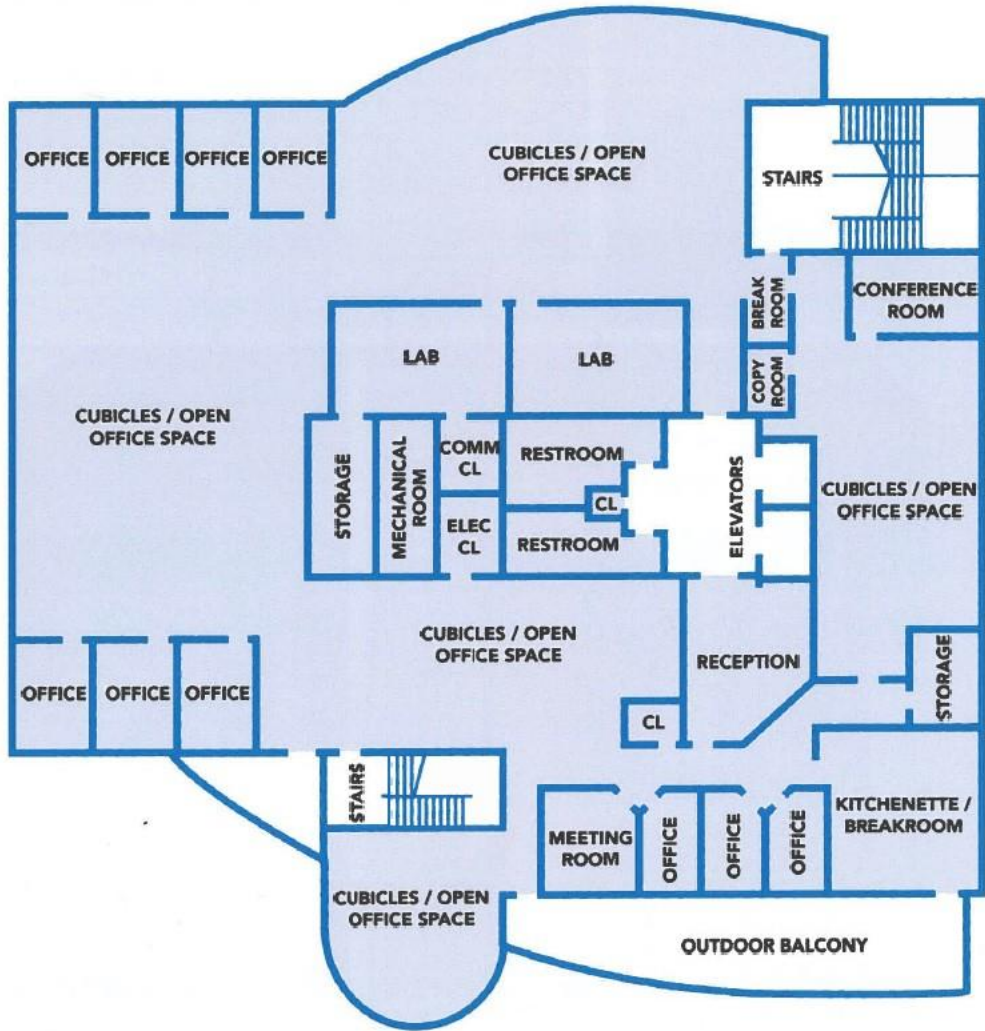
❖ Suite 1100 South Tower First Floor 4,950 SQ FT



❖ Suite 1300 South Tower Third Floor 3,771 SQ FT



❖ Suite 1350 South Tower Third Floor 1,622 SQ FT



❖ Suite 1400 South Tower Fourth Floor 15,351 SQ FT

Contact Us

DeWitt Blundon
Associate Broker

1+ 304 546 2581

dewitt.blundon@cbre.com

David Durbin
Broker

1+ 304 720 8497

David.durbin@cbre.com