

For Lease

Warehouse/Office Space

\$10/SF NNN Lease

2109 N Yellowwood Ave
Broken Arrow, OK 74012



Office Warehouse Available in 6100 Center
±771 SF Office | ±3,357SF Warehouse | Total ±4,128 SF

Now available for lease: a ±4,128 SF office/warehouse facility located at 2109 N Yellowwood Ave within the 6100 Center, a popular light industrial park.

The building includes approximately 770 SF of warehouse space featuring a 12' x 12' overhead door and 16' ceiling height plus an additional 200 SF climate controlled storage room off warehouse.

The 3,357 SF office area offers a functional layout with a large reception area, five private offices, a break room, two restrooms, storage/server rooms and central heat and air.

The property includes 10+ off-street parking spaces plus a fenced storage yard.

6100 Center is positioned in the East Tulsa submarket at a signalized intersection just East of 61st and Garnett providing excellent access to the Hwy 169 and the Broken Arrow Expressway. Suitable for a variety of light industrial or service uses.

Immediate availability.

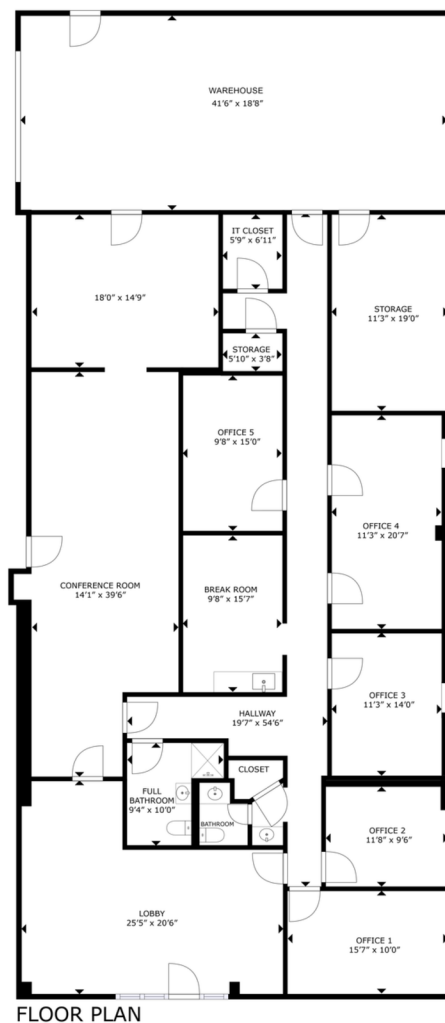
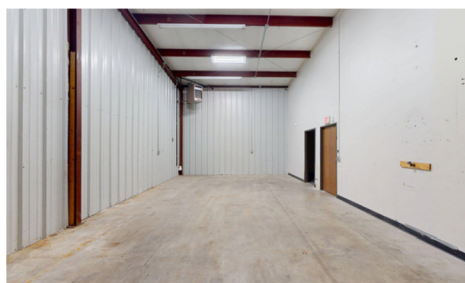


Property Highlights:

- Located within the 6100 Center light industrial park
- Signalized intersection at 61st St & Yellowwood Ave
- Convenient access to Mingo Valley Expressway and Broken Arrow Expressway

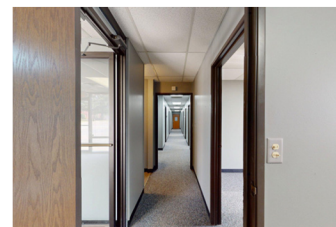
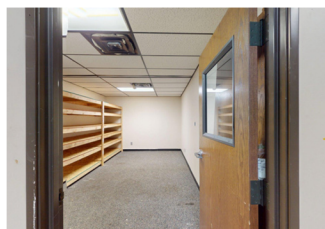
Office Features:

- ±3,357 SF
- Reception area
- Five private offices
- Break Room
- Central heat and air
- (2) Private restrooms
- Zoning: Light Industrial
- Availability: Immediate



Warehouse Features:

- ±771 SF
- 12' x 12' overhead door
- 16' Ceiling
- 200 SF Storage Room
- Access to Gated Yard



Contact

Brian Frere, KW Commercial

+1 918 298 6900

brian@brianfrere.com

