

Jordan Commons

9350 S 150 E, Sandy, UT

For Lease



PROPERTY HIGHLIGHTS & DEMOGRAPHICS

- **Available Tower Office Spaces:**
- **6,405 +/- SF & 8,084 +/- SF**
- Located in Jordan Commons Commercial Center adjacent to the Mountain America Exposition Center and the Rio Tinto Soccer Stadium.
- Property consists of a 20- screen world class movie theatre.
- Convenient access to I-15 & a UTA Trax Station (Sandy Expo).
- Ample parking stalls including covered parking

DEMOGRAPHICS

Population	1 Mile	3 Mile	5 Mile
2020 est.	14,558	127,746	316,495
2025 proj.	15,897	136,183	334,971

Households	1 Mile	3 Mile	5 Mile
2020 est.	4,937	44,367	106,570
2025 proj.	5,374	47,392	112,979

Income	1 Mile	3 Mile	5 Mile
2020 Ave HHI	\$77,409	\$95,226	\$106,212
2020 Med HV	\$65,743	\$77,644	\$85,206

DRHCO

Dee R. Hansen
801.540.2002 cell
801.274.2002 office
dh@drhco.com

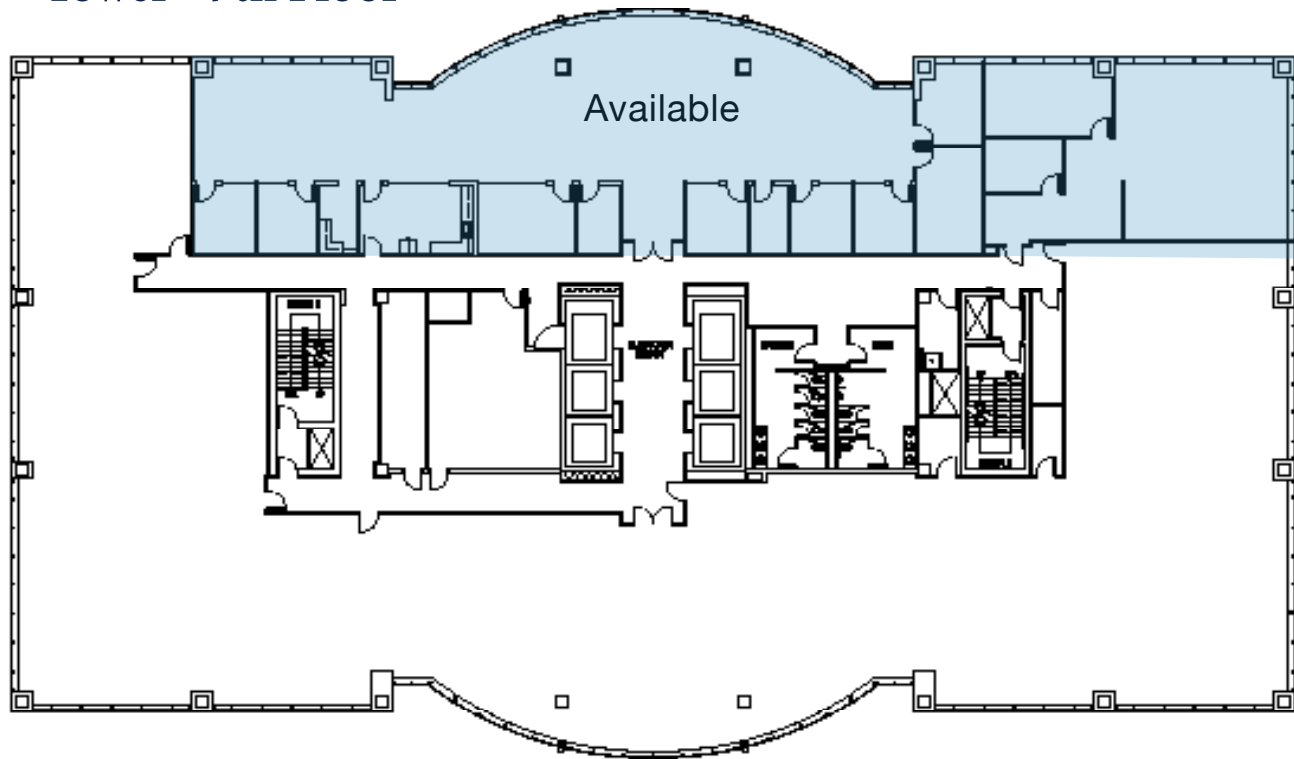
Archie McDonnel
801.718.7761 cell
801.274.2211 office
archie@drhco.com

All information contained herein is received from public sources and may not be fully accurate. Any interested party should independently verify this information. The DRH Company has taken reasonable steps to verify this information but does not warrant the information contained herein.

Jordan Commons

9350 S 150 E, Sandy, UT

Tower - 7th Floor



6,405 +/- Sq Ft Layout:

- For Lease
- 7 Offices
- 3 Conference Rooms
- 1 Break Room
- 3 Stand Up / Huddle Rooms or Small Offices

DRHco

Dee R. Hansen
801.540.2002 cell
801.274.2002 office
dh@drhco.com

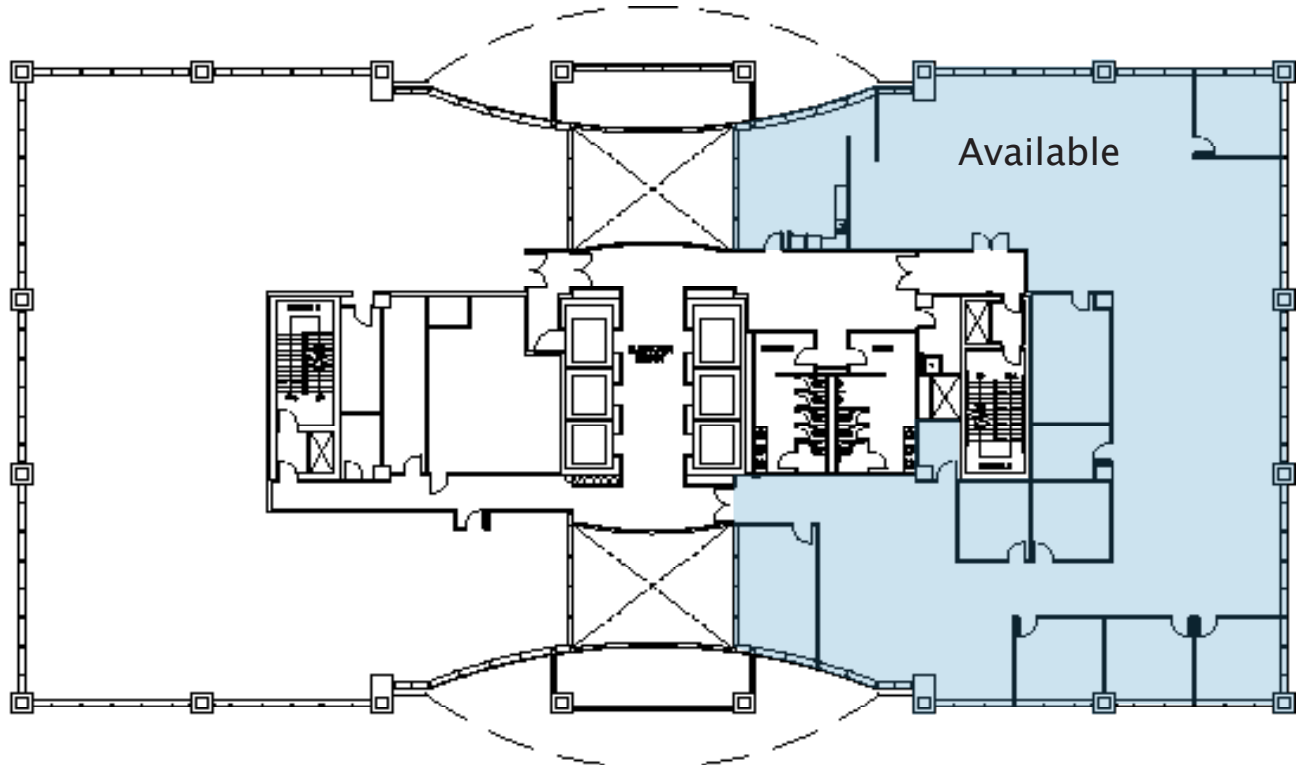
Archie McDonnell
801.718.7761 cell
801.274.2211 office
archie@drhco.com

All information contained herein is received from public sources and may not be fully accurate. Any interested party should independently verify this information. The DRH Company has taken reasonable steps to verify this information but does not warrant the information contained herein.

Jordan Commons

9350 S 150 E, Sandy, UT

Tower - 2nd Floor



8,084 +/- Sq Ft Layout:

- For Lease
- Available: August 2020
- 6 Offices
- 2 Conference Rooms

DRHco

Dee R. Hansen
801.540.2002 cell
801.274.2002 office
dh@drhco.com

Archie McDonnell
801.718.7761 cell
801.274.2211 office
archie@drhco.com

All information contained herein is received from public sources and may not be fully accurate. Any interested party should independently verify this information. The DRH Company has taken reasonable steps to verify this information but does not warrant the information contained herein.

Jordan Commons

9350 S 150 E, Sandy, UT



DRHco

Dee R. Hansen
 801.540.2002 cell
 801.274.2002 office
 dh@drhco.com

Archie McDonnell
 801.718.7761 cell
 801.274.2211 office
 archie@drhco.com

All information contained herein is received from public sources and may not be fully accurate. Any interested party should independently verify this information. The DRH Company has taken reasonable steps to verify this information but does not warrant the information contained herein.