



KLABIN

A member of the CORFAC International network

**HILLCREST • HINDRY
BUSINESS PARK**



*1000-1016 W Hillcrest Blvd.
601-625 Hindry Ave.*

PROPERTY FEATURES

- LAX Adjacent Multi-Tenant Business Park
- Immediate 405/105 Freeway Access
- Quick Access to Lower West LA & South Bay
- Units From 1,100 to 4,108 SF
- 14'-16' Clear Height
- Dock High and Ground Level Loading
- Recent Major Exterior Renovations
- Low Common Area Maintenance Expenses
- Professionally Owned and Managed



LEASING INQUIRIES

COURTNEY R. BELL

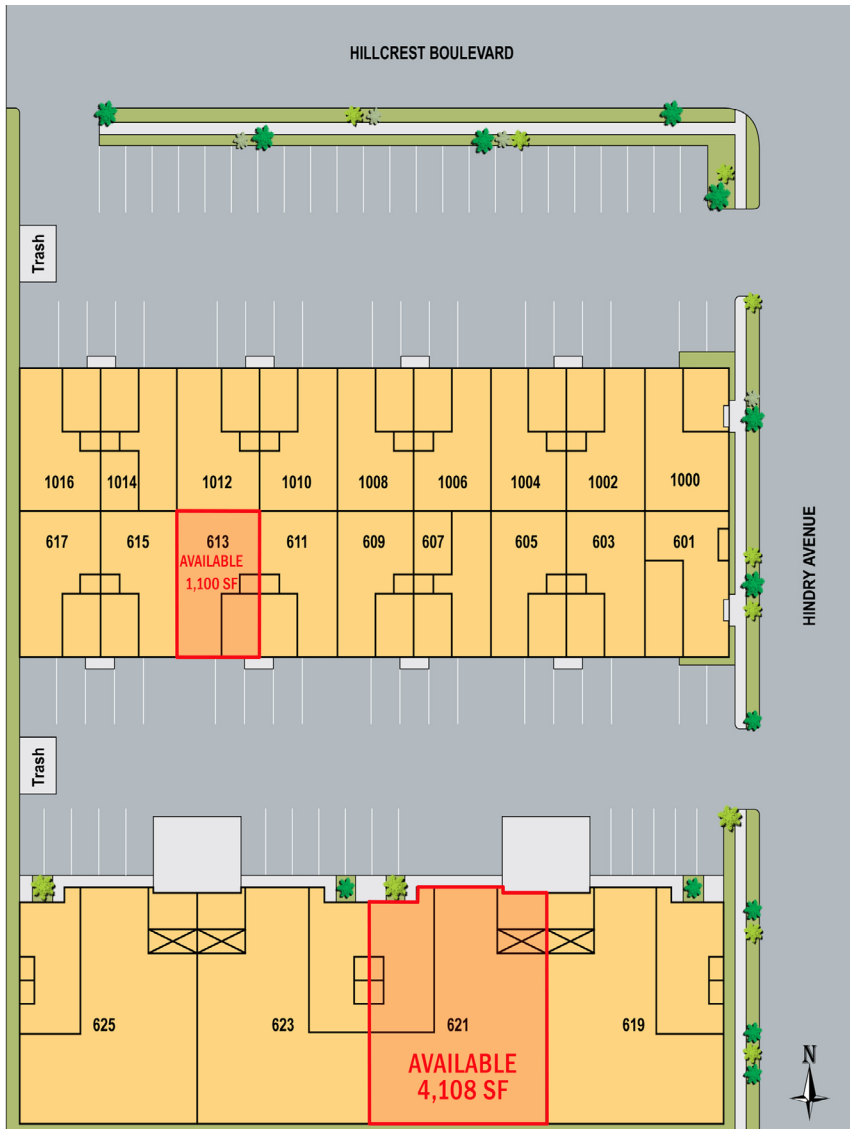
Principal

courtneyb@klabin.com

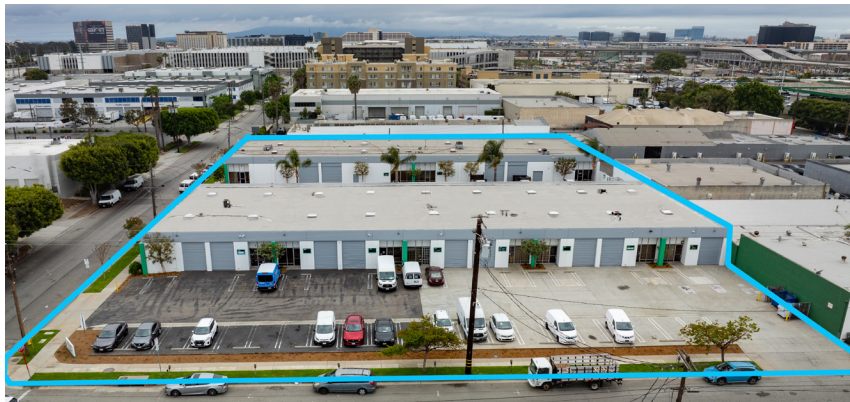
DRE #01029708

HILLCREST • HINDRY

INGLEWOOD, CA 90301



This site plan and photos do not necessarily reflect actual build out in each unit.



19700 S. Vermont Avenue, Suite 100, Torrance, CA 90502
 310.329.9000 | 310.329.9088 fax
 Corporate DRE 00824993



KLABIN.COM