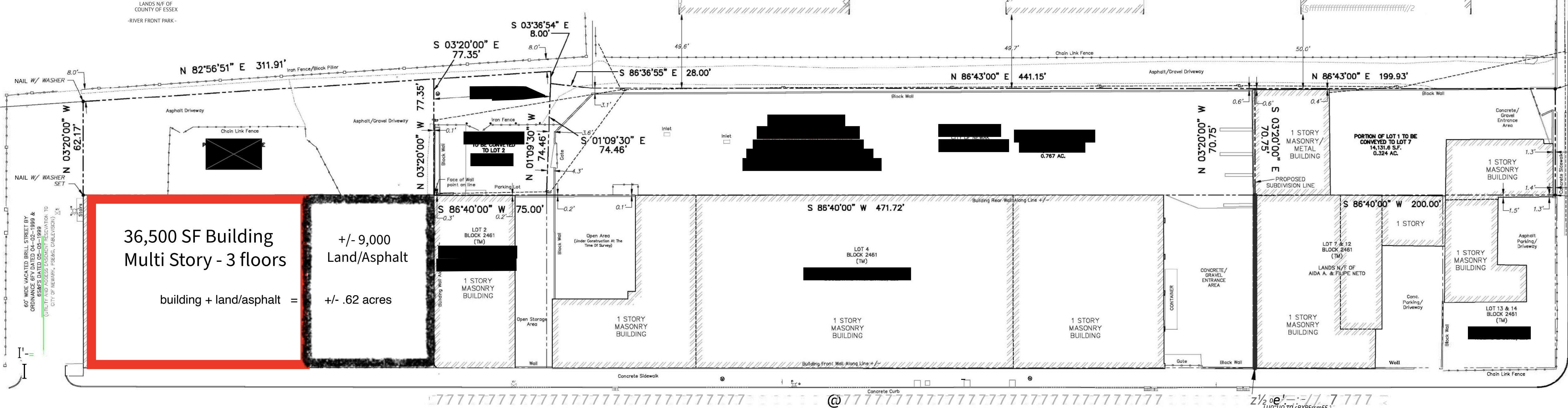


LANDS N/F OF  
COUNTY OF ESSEX  
- RIVER FRONT PARK -



60' WIDE VACATED BRILL STREET BY  
ORDINANCE 6FV DATED 04-02-1999 &  
6S&FS DATED 05-05-1999  
(UTILITY AND ACCESS EASEMENT RESERVATION TO  
CITY OF NEWARK, P&E&G, CABLEVISION)

**36,500 SF Building  
Multi Story - 3 floors**

**+/- 9,000  
Land/Asphalt**

building + land/asphalt = +/- .62 acres

RAYMOND 66' ROW BOULEVARD

1/2" = 100' - 1" = 200'  
LUO 110 TO CRXPEsmEE 1