



# FREESTANDING WAREHOUSE / SHOWROOM FOR SALE AND LEASE

1805 E MCDOWELL RD | PHOENIX, AZ 85006

**Landon McKernan**, Partner  
480.294.6571  
lmckernan@levrose.com

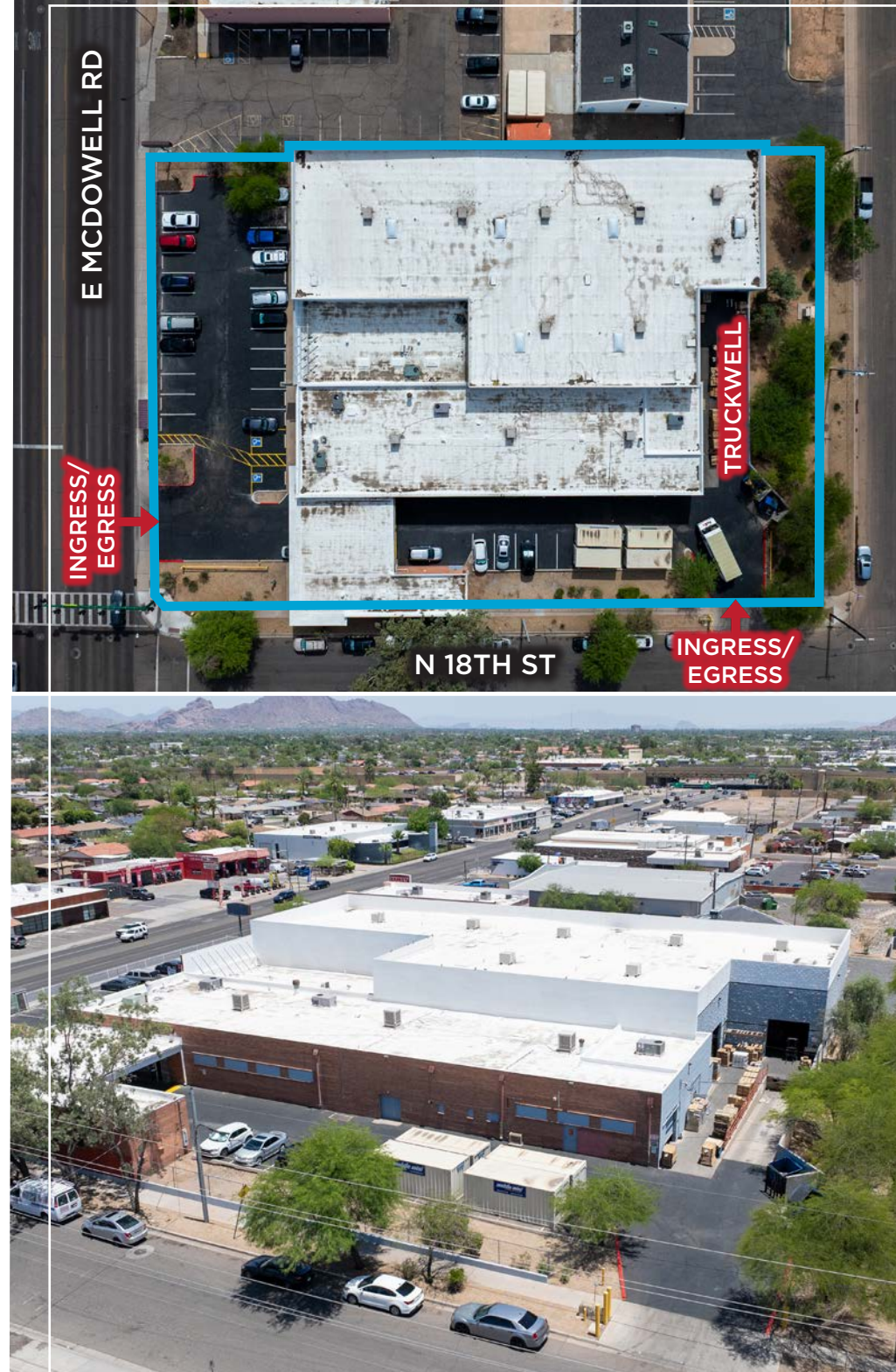
**Mark Cassell**, Partner  
480.868.8003  
mcassell@levrose.com

**Cameron Miller**, Advisor  
480.294.6584  
cmiller@levrose.com



# PROPERTY DETAILS

PROPERTY TYPE:	Industrial/Showroom
SALE PRICE	\$5,875,000 (\$196/SF)
LEASE RATE:	\$0.95/SF NNN Property Taxes & Insurance are approximately \$0.13/SF
BUILDING SIZE:	±30,047 SF (Original Construction: ±14,194 SF) (Newer Construction: ±15,853 SF)
LOT SIZE:	±60,353 SF (±1.39 AC)
YEAR BUILT:	1958 (Original Construction) 2001 (Newer Construction)
PARKING:	36 Spaces
ZONING:	C-2, Phoenix 📍
PARCEL:	116-13-151





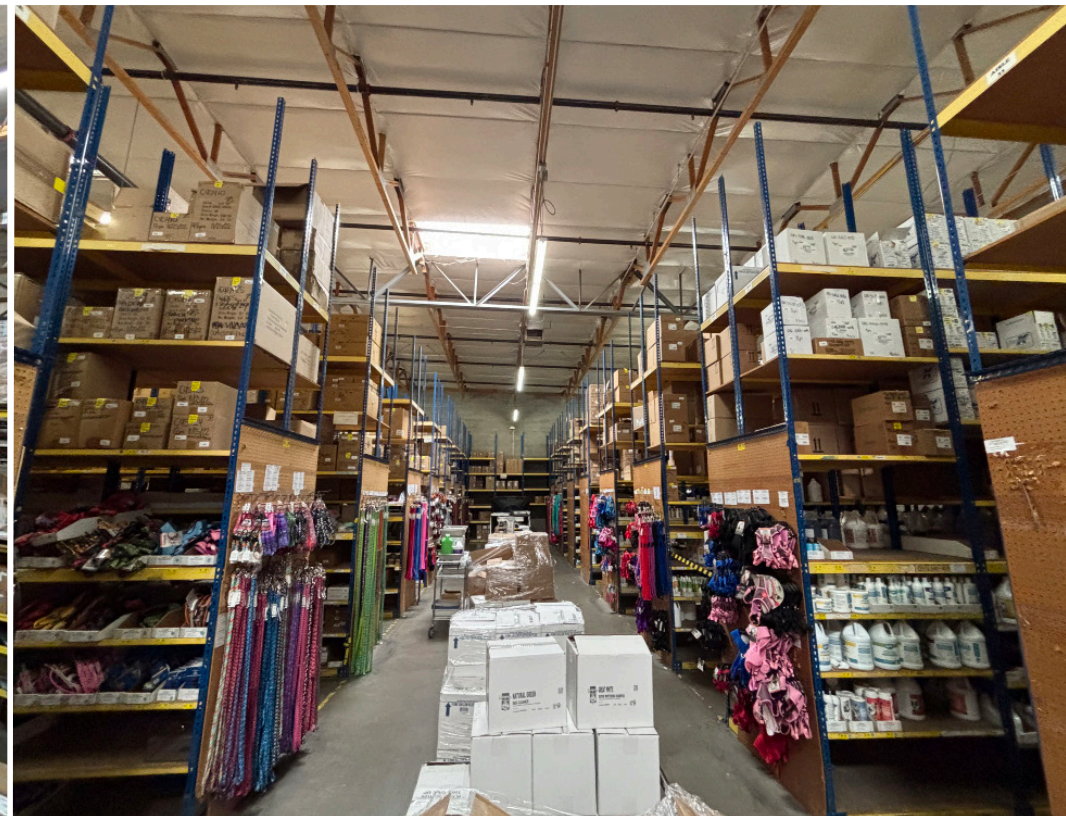
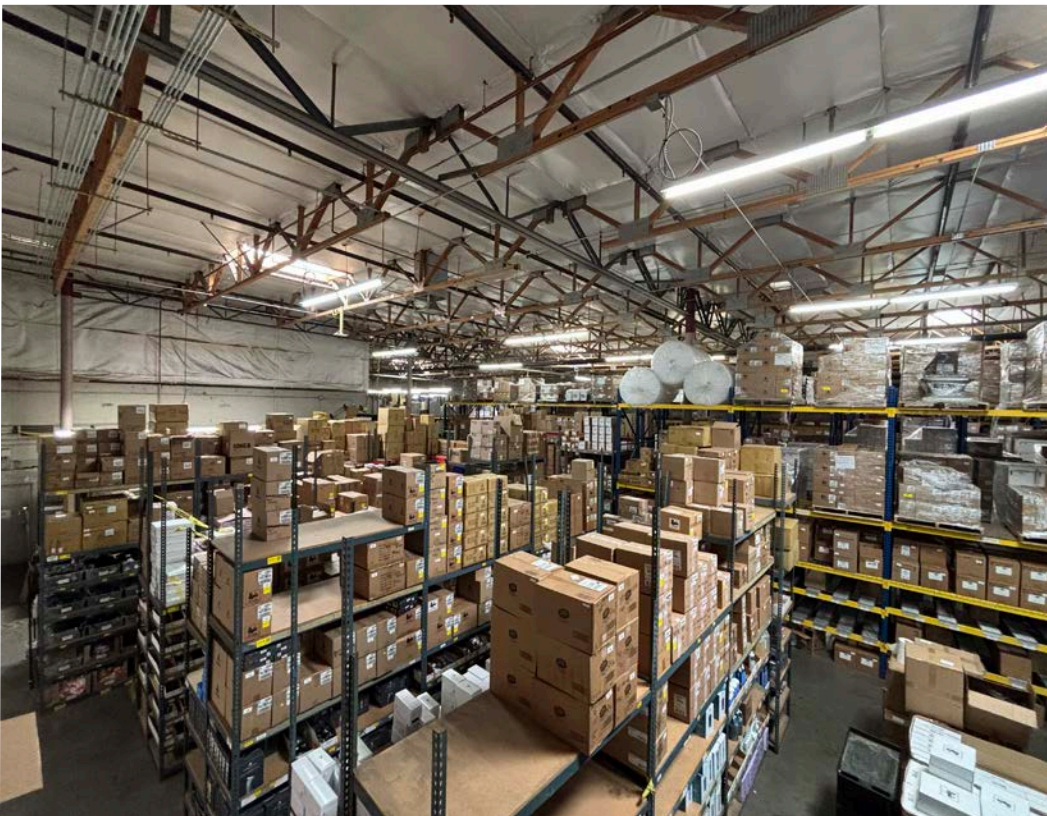
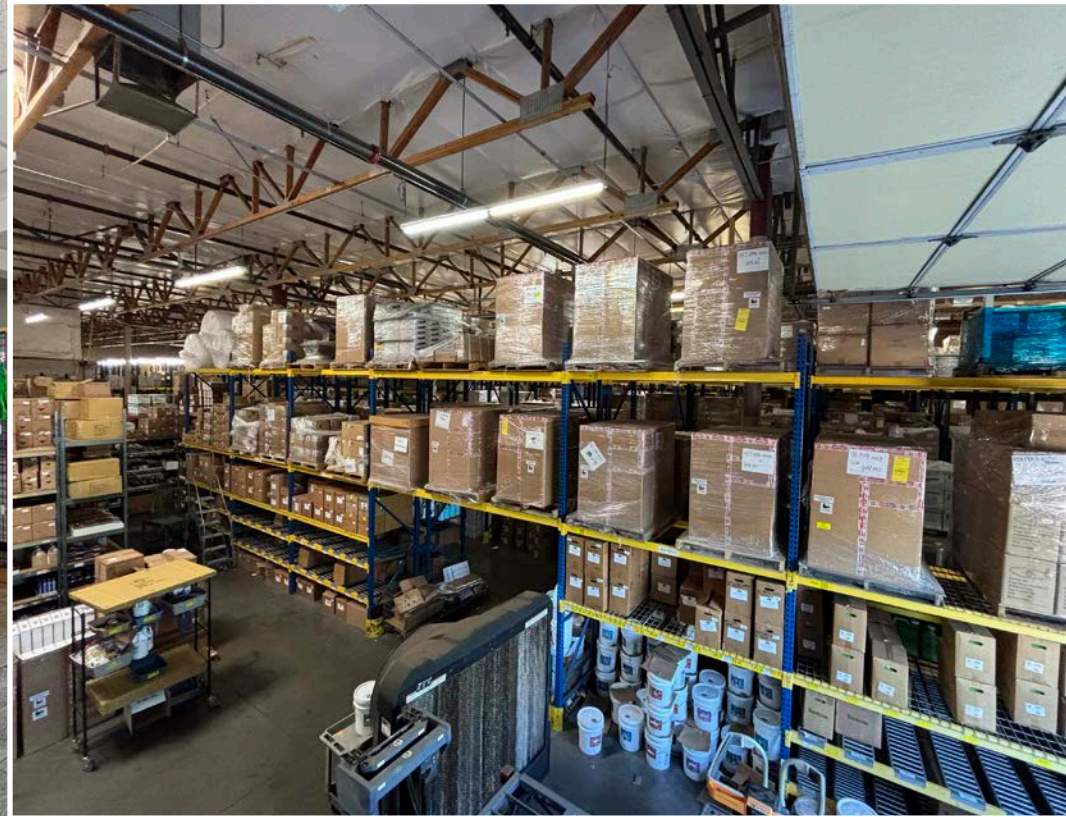
# PROPERTY HIGHLIGHTS

- Available March 12th, 2026
- Clear height: 21' - 23'
- Power: 1200A, 120/208V, 3-Phase & 400A, 120/240V, 3-Phase (Buyer/Tenant to confirm)
- One (1) truckwell
- Four (4) grade level doors: two (12'x10'), one (10'x10'), one (8'x8')
- Drive-thru and large showroom for retail sales
- Fire sprinklers
- Swamp coolers in warehouse
- Skylights in warehouse
- Mezzanine
- Roof replaced in 2020
- Brand new paint and asphalt seal
- New electrical and plumbing in 2001
- Located in an Opportunity Zone
- Approximately 25% office/75% warehouse





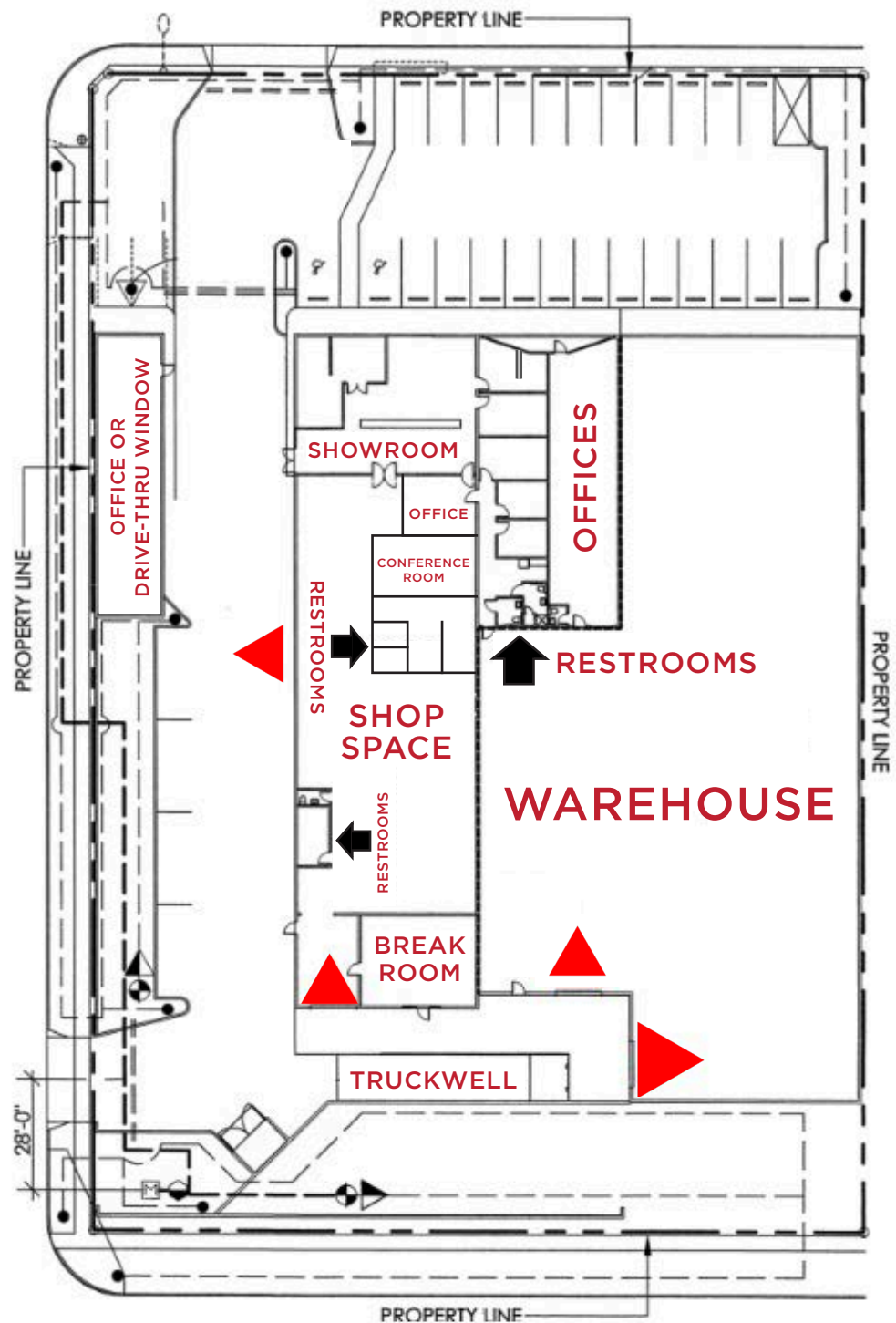
# INTERIOR PHOTOS





# FLOOR PLAN

 - GRADE LEVEL DOOR





# AERIAL OVERVIEW



DOWNTOWN  
PHOENIX

THE GOVERNOR  
(176 UNIT APT. COMPLEX)

SITE

E MCDOWELL RD | VPD:  $\pm 31,920$





# AERIAL OVERVIEW

MIDTOWN  
PHOENIX



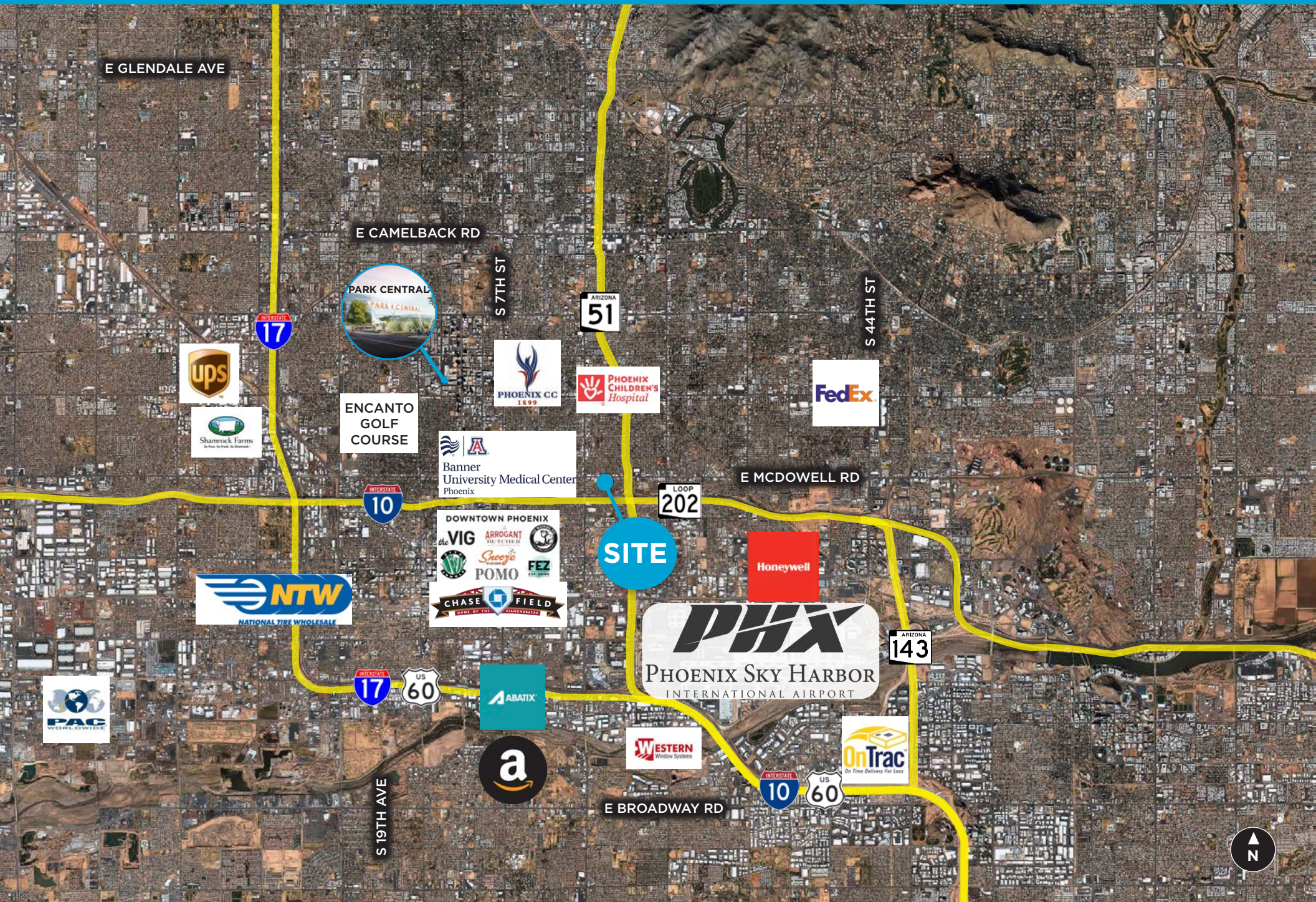
SITE

E BRILL ST





# INDUSTRIAL OVERVIEW





# DEMOGRAPHICS



## POPULATION

	1 MILE	3 MILES	5 MILES
2024	21,664	160,377	351,076
2029	23,613	175,811	382,488



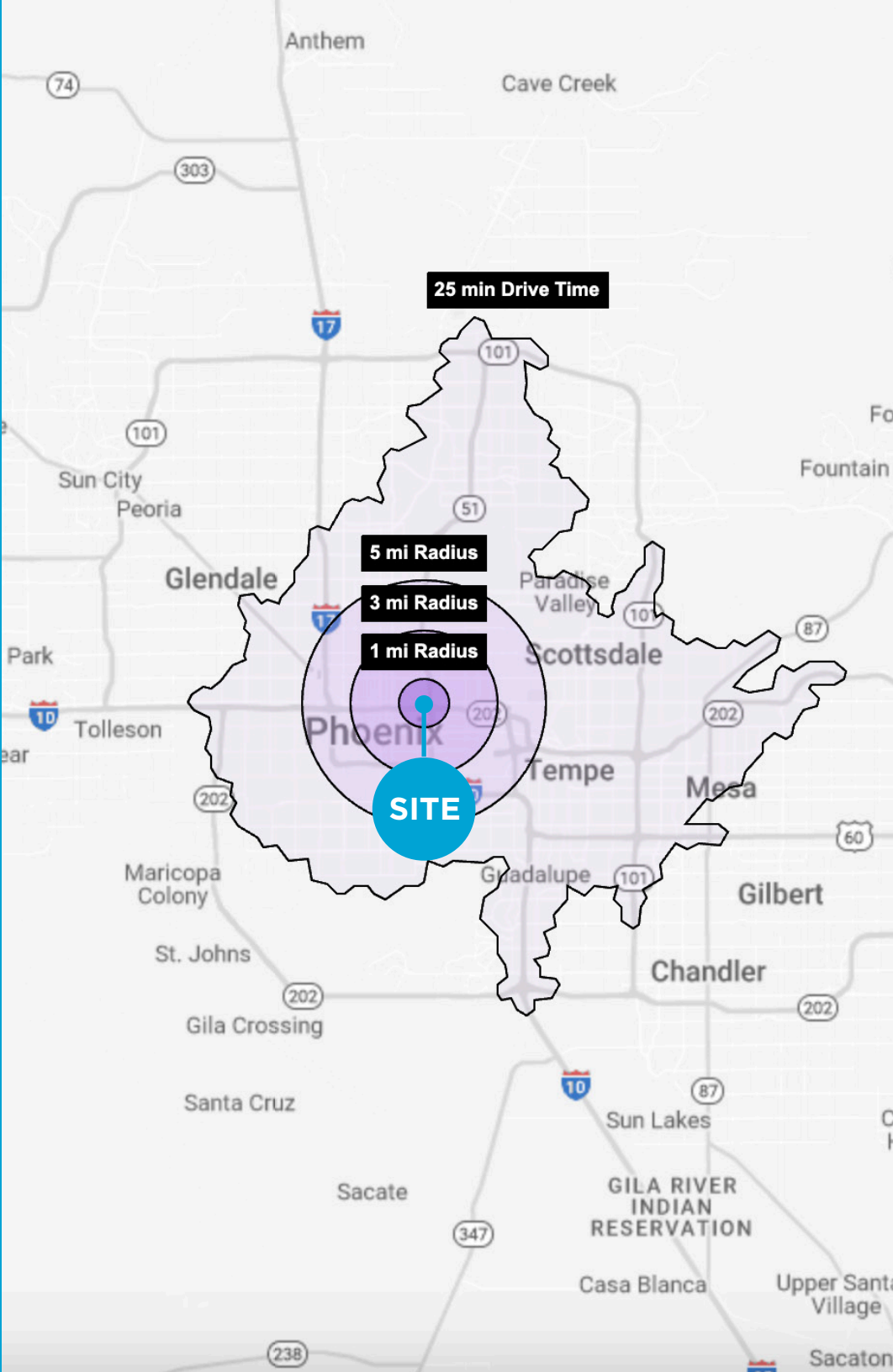
## HOUSEHOLDS

	1 MILE	3 MILES	5 MILES
2024	7,886	70,213	148,207
2029	8,615	77,269	161,931



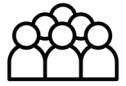
## AVG. H.H. INCOME

	1 MILE	3 MILES	5 MILES
2024	\$58,687	\$76,598	\$83,760





# PHOENIX CITY OVERVIEW



**1.6M +**  
**TOTAL POPULATION**



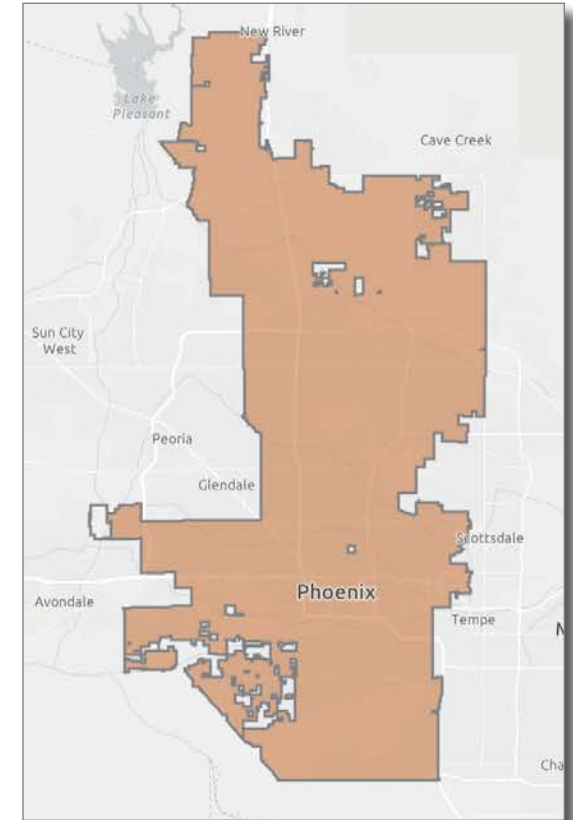
**\$70K +**  
**AVG HH INCOME**

## GROWING POPULATION

The City of Phoenix is a fast-paced and dynamic city with a welcoming attitude towards its residents and businesses. Phoenix is the 5th largest city in the United States, and currently houses more than 1.6M residents with the median age being 34 years old. The population grew 11.2% in between 2010-2020, and the city is still seeing businesses and families alike relocating to the city. Phoenix has plenty to offer its residents and visitors, including more than 185 golf courses, 10 luxurious resorts, the finest dining in the state, and more than 50 miles of hiking, biking, and horseback riding trails.

## BUSINESS IN PHOENIX

There are currently close to 50,000 businesses in Phoenix and over 750,000 employees. Entertainment, travel, and apparel are the most popular business sectors residents spend their income on. Phoenix is home to corporate headquarters of five Fortune 500 companies: Avnet, Freeport-McMoRan, Republic Services, Magellan Health and Sprouts Farmers Market (2021).





**Landon McKernan**  
Partner  
480.294.6571  
lmckernan@levrose.com

**Mark Cassell**  
Partner  
480.868.8003  
mcassell@levrose.com

**Cameron Miller**  
Advisor  
480.294.6584  
cmiller@levrose.com

**LEV ROSE**  
COMMERCIAL REAL ESTATE

TCN  
COMMERCIAL  
REAL ESTATE SERVICES

