

FOR SALE-LEASE

4224 S. Hocker Drive

Independence, Missouri 64055

PROPERTY DETAILS

- > Hidden Creek Building 11 +/- 10,250 SF Total
- > Sale Price: \$615,240.00
- > Elevator to remodeled 2nd Floor
- > Convenient Location Near I-70 & Noland Road
- > Many Restaurants & Retail Services Nearby
- > Ample Parking
- > Suite 100 – 544 SF
- > Suite 102 – 988 SF
- > Suite 104 – 1,464 SF
- > Suite 200 – 5,125 SF
- > Available at \$12.00 P/SF Modified Gross Including Utilities & NNN Fees
- > Tenant Provides Their Own Janitorial, Phones and Internet



CONTACT INFORMATION

Shannon E. Simmermon, P.C.
3170 NE Carnegie Drive, Suite 400
Lee's Summit, Missouri 64064

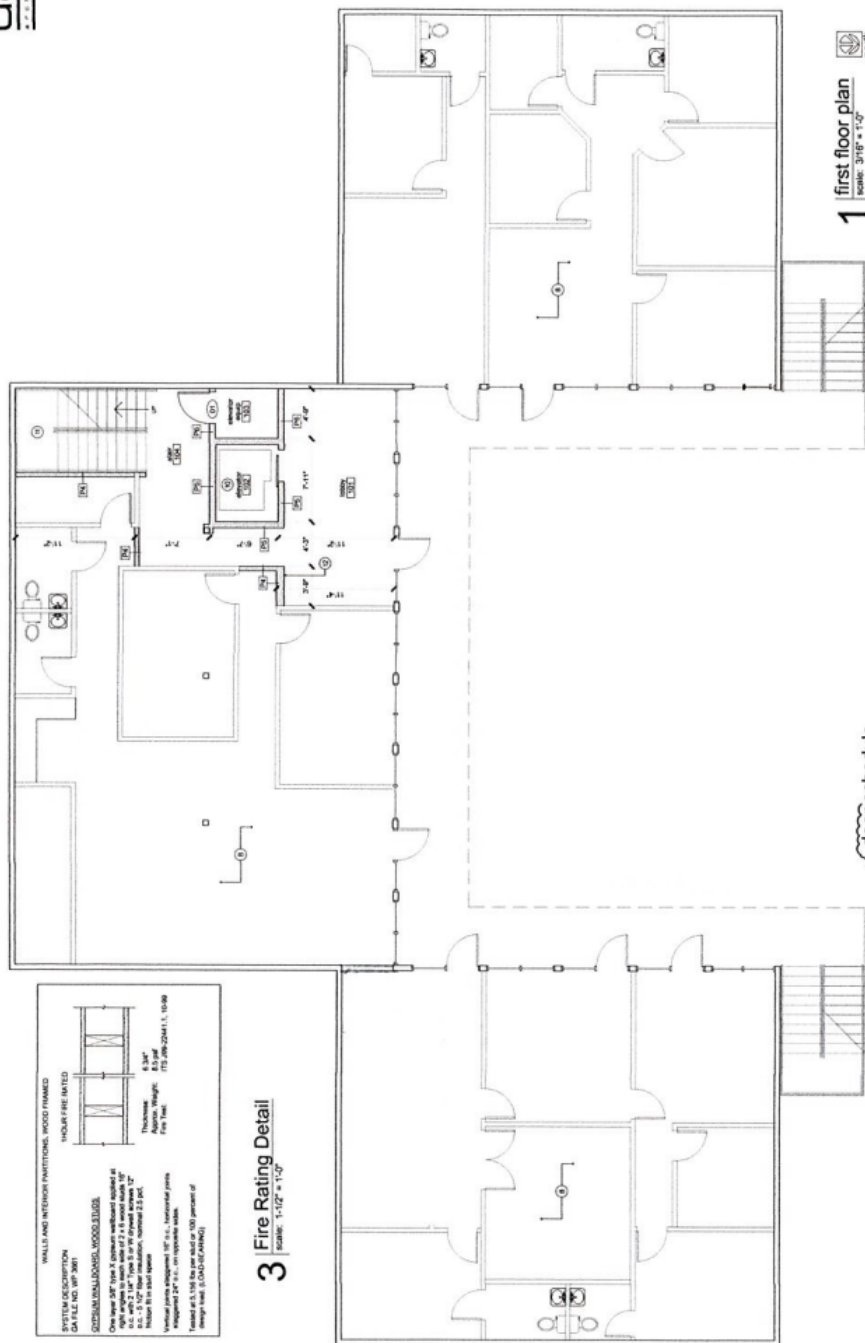
Phone: 816-795-8100 ext. 117
Cell: 816-918-8940
Fax: 816-875-0051
www.ceahrealtors.com

COMMITTED TO CLIENT AND COMMUNITY

Brokerage • Consulting • Development • Management



The information contained within this document has been obtained from sources deemed reliable. We cannot be responsible, however, for errors, omissions, prior sales or leasing, withdrawal from market or price changes. Seller and broker recommended tenant/purchaser's independence investigation as to all matters pertinent to tenant/purchaser's decision, without reservation.



finish notes

- [illegible]

door schedule

- [illegible]

room finish notes

- Fluores:**
Rooms 101-102, 104, 200-206, 209-211, 213-220 & 224
Furnish and install building standard carpet.
- Rooms:** 103, 201-206 & 212
Furnish and install standard VCT (vinyl composition tile).
- Stairs:** 225 & 226 are existing to remain.
- Other:**
Rooms 101-104, 200-206, 209-211, 213-221 & 224
Furnish and install 4" core base (less 120' coils).
- Rooms:** 207-208, 212, 222-223
Furnish and install 8" core base.

general notes

- [illegible]

construction notes ☺

1. Internal consistency (Cronbach's α) for the 30-item questionnaire was 0.87. The questionnaire was administered to 121 people, 34 males and 87 females. The questionnaire was administered to 121 people, 34 males and 87 females. The questionnaire was administered to 121 people, 34 males and 87 females.
2. External validity (construct validity) was assessed by comparing the results of the questionnaire with the results of the questionnaire. The questionnaire was administered to 121 people, 34 males and 87 females.
3. Internal validity (construct validity) was assessed by comparing the results of the questionnaire with the results of the questionnaire. The questionnaire was administered to 121 people, 34 males and 87 females.
4. External validity (construct validity) was assessed by comparing the results of the questionnaire with the results of the questionnaire. The questionnaire was administered to 121 people, 34 males and 87 females.
5. Internal validity (construct validity) was assessed by comparing the results of the questionnaire with the results of the questionnaire. The questionnaire was administered to 121 people, 34 males and 87 females.
6. External validity (construct validity) was assessed by comparing the results of the questionnaire with the results of the questionnaire. The questionnaire was administered to 121 people, 34 males and 87 females.
7. Internal validity (construct validity) was assessed by comparing the results of the questionnaire with the results of the questionnaire. The questionnaire was administered to 121 people, 34 males and 87 females.
8. External validity (construct validity) was assessed by comparing the results of the questionnaire with the results of the questionnaire. The questionnaire was administered to 121 people, 34 males and 87 females.
9. Internal validity (construct validity) was assessed by comparing the results of the questionnaire with the results of the questionnaire. The questionnaire was administered to 121 people, 34 males and 87 females.
10. External validity (construct validity) was assessed by comparing the results of the questionnaire with the results of the questionnaire. The questionnaire was administered to 121 people, 34 males and 87 females.

partition legend

- [illegible]

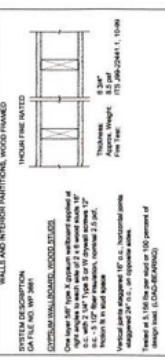
legend

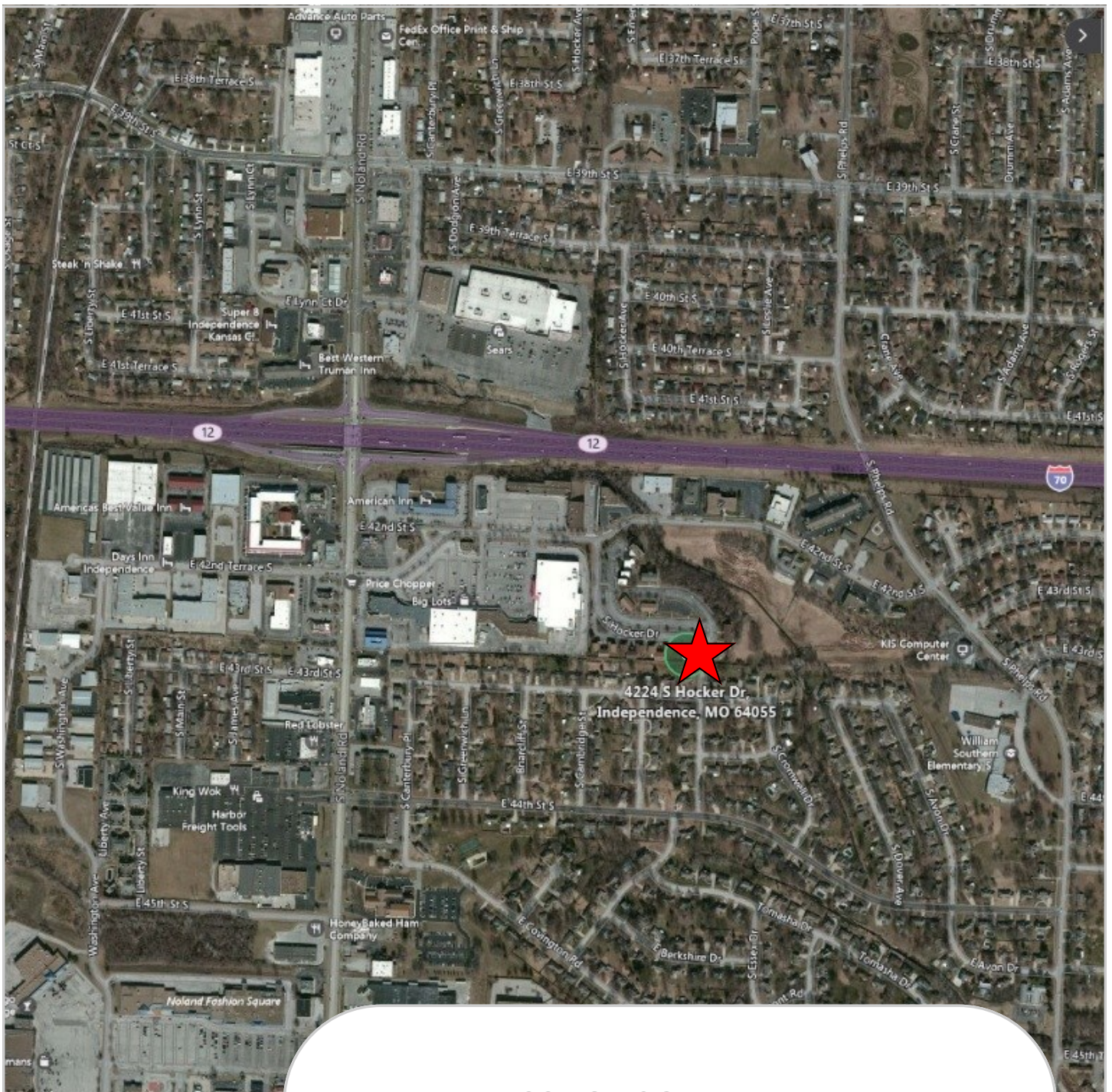
- new door - see door schedule for type & specs
- construction note
- See previous
- See schedule
- See schedule
- See schedule
- See schedule



fire rating detail
scale: 1/1/2" = 1'-0"

- | Flavors | Notes |
|---|-------|
| Almonds 101-102, 104, 109-106, 200-201, 212-220 & 224 | |
| Apricot 103, 105, 107, 108, 110, 111, 112, 113, 114, 115, 116, 117, 118, 119, 120, 121, 122, 123, 124, 125, 126, 127, 128, 129, 130, 131, 132, 133, 134, 135, 136, 137, 138, 139, 140, 141, 142, 143, 144, 145, 146, 147, 148, 149, 150, 151, 152, 153, 154, 155, 156, 157, 158, 159, 160, 161, 162, 163, 164, 165, 166, 167, 168, 169, 170, 171, 172, 173, 174, 175, 176, 177, 178, 179, 180, 181, 182, 183, 184, 185, 186, 187, 188, 189, 190, 191, 192, 193, 194, 195, 196, 197, 198, 199, 200, 201, 202, 203, 204, 205, 206, 207, 208, 209, 210, 211, 212, 213, 214, 215, 216, 217, 218, 219, 220, 221, 222, 223, 224, 225, 226, 227, 228, 229, 230, 231, 232, 233, 234, 235, 236, 237, 238, 239, 240, 241, 242, 243, 244, 245, 246, 247, 248, 249, 250, 251, 252, 253, 254, 255, 256, 257, 258, 259, 260, 261, 262, 263, 264, 265, 266, 267, 268, 269, 270, 271, 272, 273, 274, 275, 276, 277, 278, 279, 280, 281, 282, 283, 284, 285, 286, 287, 288, 289, 290, 291, 292, 293, 294, 295, 296, 297, 298, 299, 300, 301, 302, 303, 304, 305, 306, 307, 308, 309, 310, 311, 312, 313, 314, 315, 316, 317, 318, 319, 320, 321, 322, 323, 324, 325, 326, 327, 328, 329, 330, 331, 332, 333, 334, 335, 336, 337, 338, 339, 340, 341, 342, 343, 344, 345, 346, 347, 348, 349, 350, 351, 352, 353, 354, 355, 356, 357, 358, 359, 360, 361, 362, 363, 364, 365, 366, 367, 368, 369, 370, 371, 372, 373, 374, 375, 376, 377, 378, 379, 380, 381, 382, 383, 384, 385, 386, 387, 388, 389, 390, 391, 392, 393, 394, 395, 396, 397, 398, 399, 400, 401, 402, 403, 404, 405, 406, 407, 408, 409, 410, 411, 412, 413, 414, 415, 416, 417, 418, 419, 420, 421, 422, 423, 424, 425, 426, 427, 428, 429, 430, 431, 432, 433, 434, 435, 436, 437, 438, 439, 440, 441, 442, 443, 444, 445, 446, 447, 448, 449, 450, 451, 452, 453, 454, 455, 456, 457, 458, 459, 460, 461, 462, 463, 464, 465, 466, 467, 468, 469, 470, 471, 472, 473, 474, 475, 476, 477, 478, 479, 480, 481, 482, 483, 484, 485, 486, 487, 488, 489, 490, 491, 492, 493, 494, 495, 496, 497, 498, 499, 500, 501, 502, 503, 504, 505, 506, 507, 508, 509, 510, 511, 512, 513, 514, 515, 516, 517, 518, 519, 520, 521, 522, 523, 524, 525, 526, 527, 528, 529, 530, 531, 532, 533, 534, 535, 536, 537, 538, 539, 540, 541, 542, 543, 544, 545, 546, 547, 548, 549, 550, 551, 552, 553, 554, 555, 556, 557, 558, 559, 560, 561, 562, 563, 564, 565, 566, 567, 568, 569, 570, 571, 572, 573, 574, 575, 576, 577, 578, 579, 580, 581, 582, 583, 584, 585, 586, 587, 588, 589, 590, 591, 592, 593, 594, 595, 596, 597, 598, 599, 600, 601, 602, 603, 604, 605, 606, 607, 608, 609, 610, 611, 612, 613, 614, 615, 616, 617, 618, 619, 620, 621, 622, 623, 624, 625, 626, 627, 628, 629, 630, 631, 632, 633, 634, 635, 636, 637, 638, 639, 640, 641, 642, 643, 644, 645, 646, 647, 648, 649, 650, 651, 652, 653, 654, 655, 656, 657, 658, 659, 660, 661, 662, 663, 664, 665, 666, 667, 668, 669, 670, 671, 672, 673, 674, 675, 676, 677, 678, 679, 680, 681, 682, 683, 684, 685, 686, 687, 688, 689, 690, 691, 692, 693, 694, 695, 696, 697, 698, 699, 700, 701, 702, 703, 704, 705, 706, 707, 708, 709, 710, 711, 712, 713, 714, 715, 716, 717, 718, 719, 720, 721, 722, 723, 724, 725, 726, 727, 728, 729, 730, 731, 732, 733, 734, 735, 736, 737, 738, 739, 740, 741, 742, 743, 744, 745, 746, 747, 748, 749, 750, 751, 752, 753, 754, 755, 756, 757, 758, 759, 760, 761, 762, 763, 764, 765, 766, 767, 768, 769, 770, 771, 772, 773, 774, 775, 776, 777, 778, 779, 780, 781, 782, 783, 784, 785, 786, 787, 788, 789, 790, 791, 792, 793, 794, 795, 796, 797, 798, 799, 800, 801, 802, 803, 804, 805, 806, 807, 808, 809, 810, 811, 812, 813, 814, 815, 816, 817, 818, 819, 820, 821, 822, 823, 824, 825, 826, 827, 828, 829, 830, 831, 832, 833, 834, 835, 836, 837, 838, 839, 840, 841, 842, 843, 844, 845, 846, 847, 848, 849, 850, 851, 852, 853, 854, 855, 856, 857, 858, 859, 860, 861, 862, 863, 864, 865, 866, 867, 868, 869, 870, 871, 872, 873, 874, 875, 876, 877, 878, 879, 880, 881, 882, 883, 884, 885, 886, 887, 888, 889, 890, 891, 892, 893, 894, 895, 896, 897, 898, 899, 900, 901, 902 | |





4224 S HOCKER DRIVE