

# Medical Office Space, Turn-Key Setup Waiting Room, Exam Rooms, Private Office 2364 Route 9, Howell, NJ



## *Space Details:*

**Bldg. B: 1,760 SF**

**Class “A” Space with Turn-Key Setup,  
Featuring Waiting Room/Reception Area,  
Private Offices and Several Exam Rooms**

## *Property Info:*

- **Cherry Tree Plaza**
- **Convenient Route 9 Location**
- **Professionally Maintained and Managed**
- **Great Visibility with Ample Parking**
- **Ideally Suited for Medical or Professional Office**

## *Location Features:*

- **Heavily Traveled Route 9 Frontage**
- **Surrounded by Business, Retail and Residential Communities**
- **Minutes to Routes 195 and 33**



All information furnished regarding property is from sources deemed reliable, but no warranty or representation is made as to the accuracy thereof and same is submitted subject to errors, omissions, change of price, rental or other conditions, prior sale, lease or financing, or withdrawal without notice.

**SUMMIT REALTY  
SERVICES, INC.**

Brokerage • Management • Investment

**Listing Associates:**

**Office: 732-918-9008  
Ext. 12**

**Sal Dellomo**  
**Broker of Record**  
**sal@summitrealtynj.com**  
**Cell: 732-778-0894**

# Medical Office Space, Turn-Key Setup Waiting Room, Exam Rooms, Private Office 2364 Route 9, Howell, NJ



**SUMMIT** REALTY  
SERVICES, INC.

Brokerage • Management • Investment

**Listing Associates:**

**Office: 732-918-9008  
Ext. 12**

**Sal Dellomo**  
Broker of Record  
[sal@summitrealtynj.com](mailto:sal@summitrealtynj.com)  
Cell: 732-778-0894



# Medical Office Space, Turn-Key Setup Waiting Room, Exam Rooms, Private Office 2364 Route 9, Howell, NJ



**SUMMIT** REALTY  
SERVICES, INC.

Brokerage • Management • Investment

**Listing Associates:**

**Office: 732-918-9008  
Ext. 12**

**Sal Dellomo**  
Broker of Record  
[sal@summitrealtynj.com](mailto:sal@summitrealtynj.com)  
Cell: 732-778-0894

# Medical Office Space, Turn-Key Setup Waiting Room, Exam Rooms, Private Office 2364 Route 9, Howell, NJ



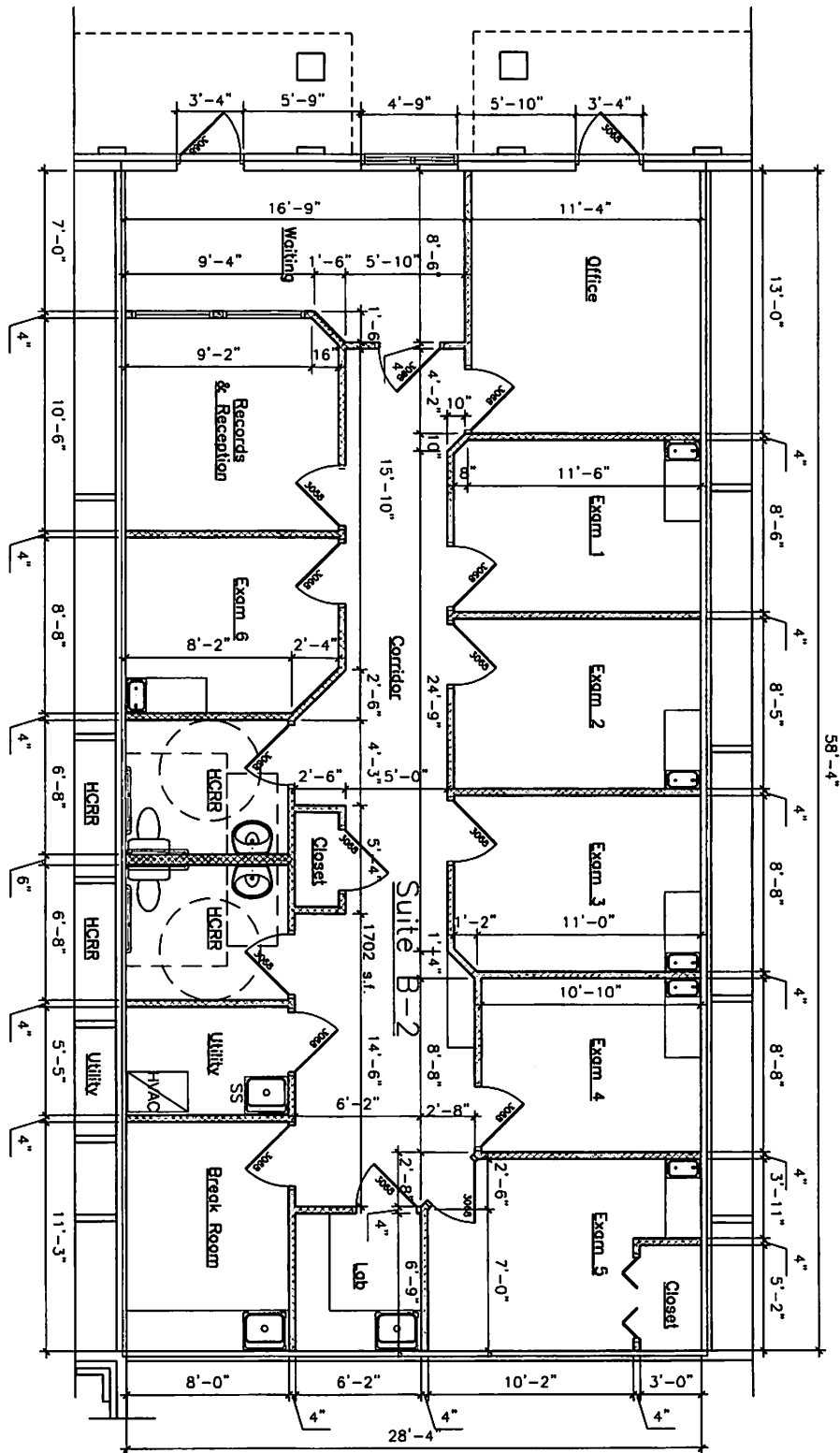
**SUMMIT** REALTY  
SERVICES, INC.

Brokerage • Management • Investment

**Listing Associates:**

**Office: 732-918-9008  
Ext. 12**

**Sal Dellomo**  
Broker of Record  
[sal@summitrealtynj.com](mailto:sal@summitrealtynj.com)  
Cell: 732-778-0894



**FLOOR PLAN**  
SCALE: NONE

A-1

SCALE	NONE
DATE	11/11/11
BY	BAK/CLK
PROJECT	CHERRYTREE PLAZA
SHEET NO.	11

**SUBJECT**  
FIRST LEVEL FLOOR PLANS  
SUITE B2

**PROJECT** TENANT OFFICE FIT-OUT  
**OWNER** CHERRYTREE PLAZA, LLC  
**LOCATION** LOT 17, BLOCK 135  
ROUTE 9 SOUTH  
HOWELL, N.J.

**BACH + CLARK, L.L.C.**  
ARCHITECTURE  
13 BRIDGWAY, FREEHOLD, N.J. 07728  
PHONE 732 462-0215 FAX 732 462-3522  
NEW YORK, N.Y. 10011  
FLORIDA, FL 32909  
PENNSYLVANIA, PA 19106  
NEW JERSEY, N.J. 07030