



 **JLL** SEE A BRIGHTER WAY

For sublease

Fully Air-Conditioned
Office/R&D/Warehouse

7 Raymond Avenue (Building C)
Salem, NH



Full building sublease opportunity

JLL is pleased to present 7 Raymond Avenue in Salem, NH for sublease. The $\pm 42,000$ SF office/R&D/warehouse building is fully air-conditioned and is located in an established industrial park, offering both functionality as well as accessibility. Just minutes from I-93 via Exit 2, the building offers best in region access to MA and NH as well as access to the immediate area's amenities.

Premises details

Availability $\pm 13,600 - 42,000$ SF

Timing Immediately

Term Negotiable



Building specifications

Building area $\pm 42,000$ SF

Office area $\pm 13,600$ SF

Car parking 2.86/1,000 SF

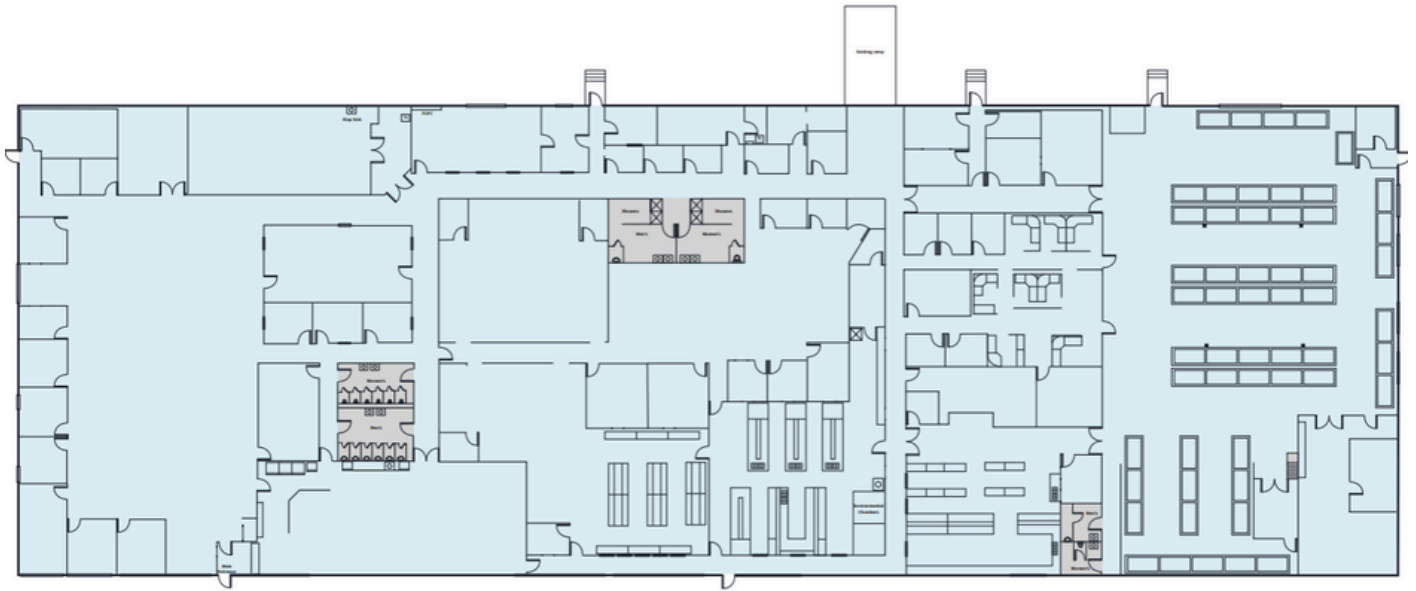
Clear height 22' to deck
20'4" to joist

Loading 5 dock doors
1 drive-in

Electrical 800A, 277/480V

Column spacing 30' x 25'

Floor plan



Interior photos



Steve Cook
Managing Director
steve.cook@jll.com
+1 617 697 3022

Matt Perry
Vice President
matt.perry@jll.com
+1 617 316 6468