

FREEMAN | COMMERCIAL REAL ESTATE



Shoppes On Little Creek

- YAMAS MEDITERRANEAN STREET FOOD
- Jersey Mike's SUBS
- Brix wood fired pizza
- ETHAN ALLEN EUROPEAN FURNITURE CENTER
- RED WING SHOES
- Duke Eye Center
- FIVE GUYS BURGERS and FRIES
- FIREBIRDS WOOD FIRED CORN
- ME Massage Envy
- at&t
- Johnny's Farmhouse Restaurant
- BUFFALO WILD WINGS

SITE

Hanes Mall Blvd. 25,000 VPD

The Lofts at Little Creek APARTMENTS

SHOVEL READY RETAIL/QSR SITE FOR SALE
+/- .65 AC | HANES MALL BLVD., WINSTON-SALEM

Ladd Freeman & Jay Luke
O: 336-768-4410
ladd@freemancommercial.com
jay@freemancommercial.com

1610 Fox Trot Court
Winston-Salem, NC 27103

Acreage: .65 Acres
Sale Price: \$750,000 (or Build to Suit Option)

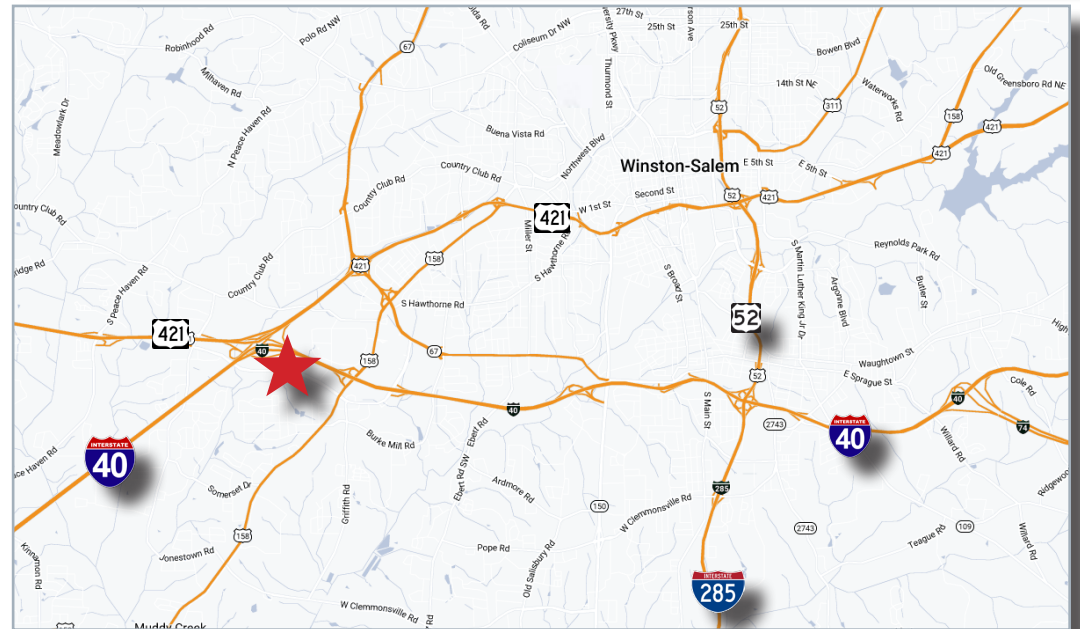
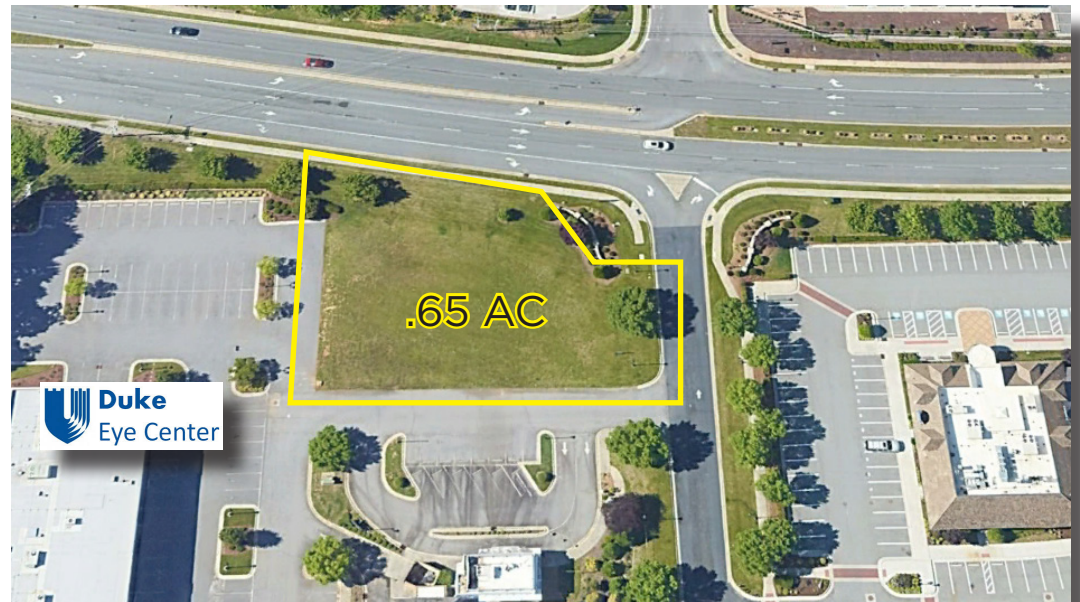
Property Highlights

- Fast Food/Retail
- Medical/Retail
- Fronting Hanes Mall Blvd.
- Next to Duke Eye Center & Johnny’s Farmhouse

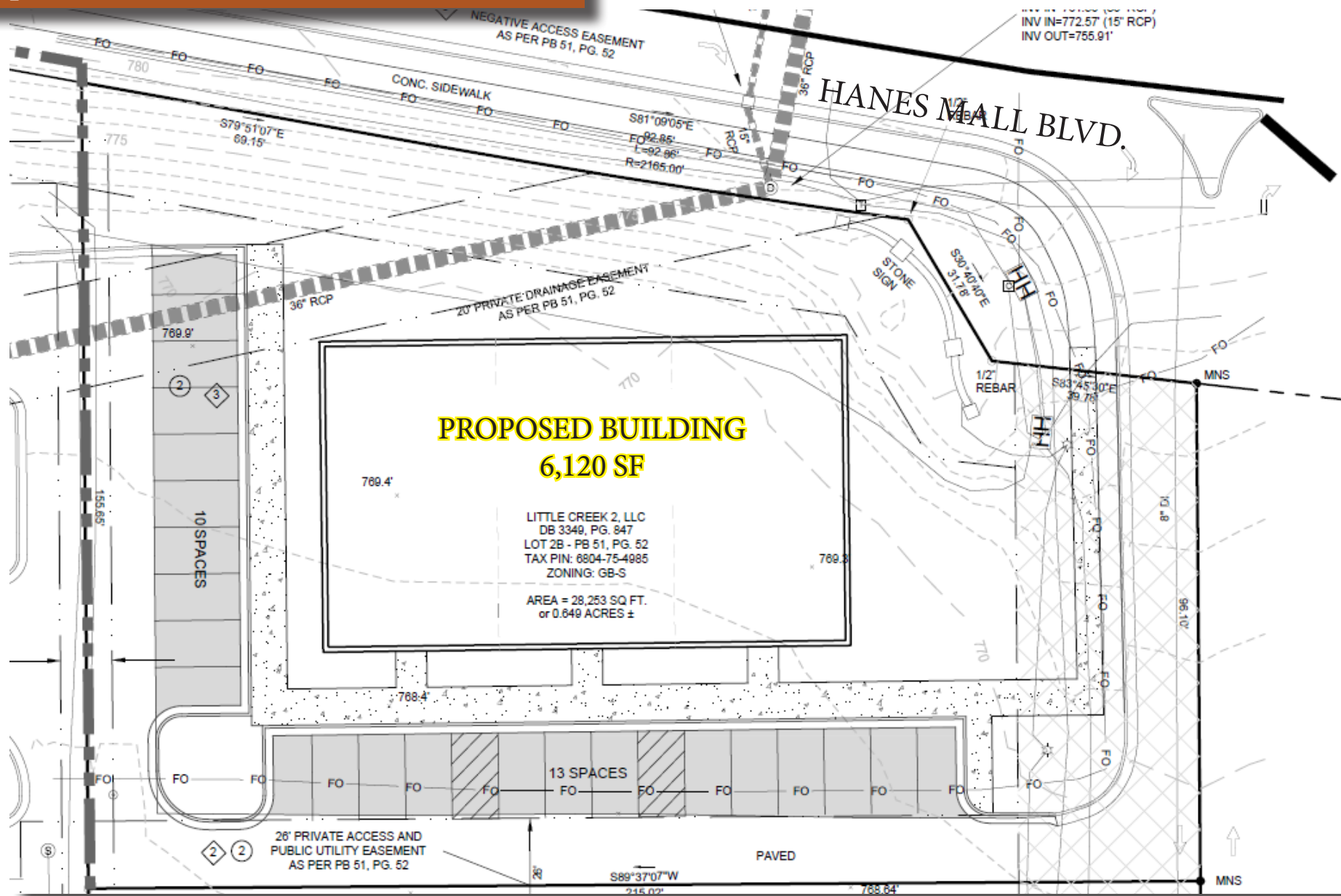
Demographics

	3 Mi.	5 Mi.	7 Mi.
2022 Total Businesses	3,096	6,819	10,081
2022 Total Employees	47,719	92,781	133,534
2022 Total Population	57,360	139,096	36,902
2022 Avg. HH Income	\$90,689	\$97,525	\$89,991

For More Information:
Ladd Freeman
O: 336-768-4410
ladd@freemancommercial.com
Jay Luke
O: 336-768-4410
jay@freemancommercial.com



Proposed Site Plan



PROPOSED BUILDING
6,120 SF

LITTLE CREEK 2, LLC
DB 3349, PG. 847
LOT 2B - PB 51, PG. 52
TAX PIN: 8804-75-4985
ZONING: GB-S

AREA = 28,253 SQ. FT.
or 0.649 ACRES ±

The Shoppes on Little Creek

Development Features

The Shoppes on Little Creek is a dynamic mixed use development conveniently located on Hanes Mall Blvd. This property offers an opportunity in a growing market with space ideal for full/quick-service restaurants, retail shops, nail salon, dry cleaner, coffee shops, medical or professional offices and much more.

- Located on a thriving retail corridor and sharing an intersection with Target, Hobby Lobby, Ashley Furniture, ULTA & KOHLS
- Well-positioned with easy access to I-40, 421 and Hwy 158
- Professionally maintained grounds and attractive store fronts

