

WAYFIELD DRIVE WAREHOUSE

3307 Wayfield Drive
Johnson City, TN 37601

Location

Just off Bristol Highway on Wayfield Drive in North Johnson City

Available for Lease

7,516 SF warehouse
\$8/SF/year NNN

Highlights

Reception

Open office/showroom area

2 restrooms

12' grade-level loading dock with ramp

14' drive-in door

Side entrance door

Approx. 2 miles from I-26, exits 19 and 20

Zoned B-4: Planned Arterial Business District

Demographics

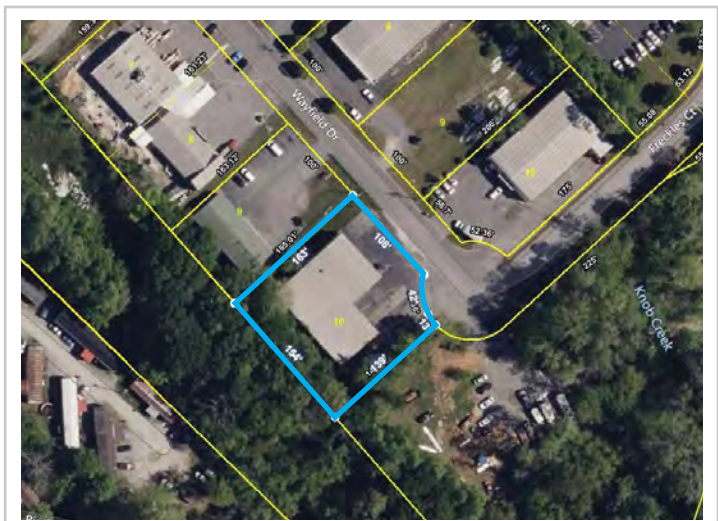
(2023 Est.)	3 mile	5 mile	10 mile
Population	28,800	69,519	169,294
Median HH Income	\$67,863	\$55,598	\$56,122
Median Age	46.1	41.2	42.3

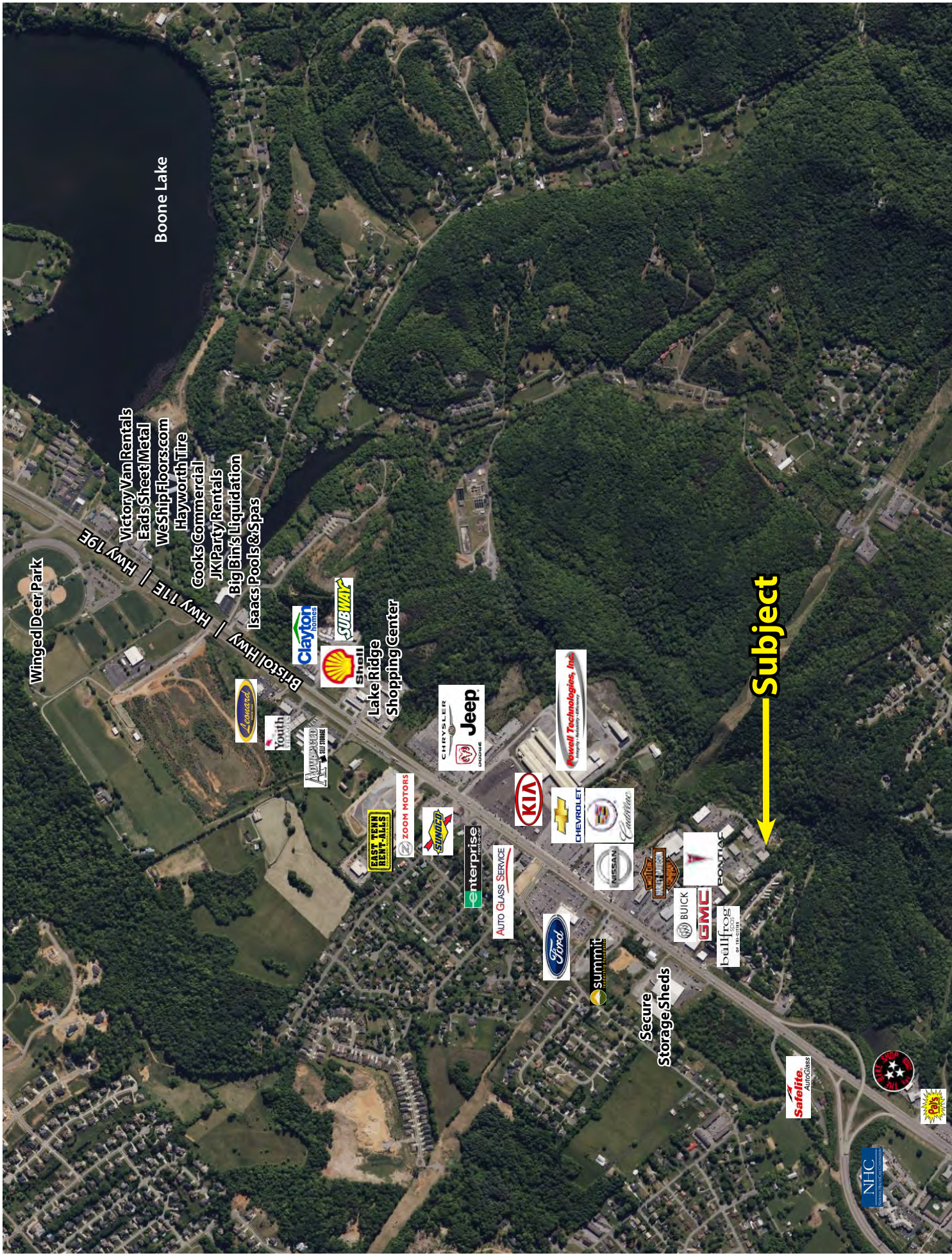
Contact

Shannon K. Castillo
Affiliate Broker
shannon@mitchcox.com



O 423-282-6582 | F 423-282-5903
www.mitchcox.com





Boone Lake

Winged Deer Park

Bristol Hwy | HWY 17E | HWY 19E

Victory Van Rentals
Eads Sheet Metal
WeShipFloors.com
Hayworth Tire
Cooks Commercial
JK Party Rentals
Big Bin's Liquidation
Isaacs Pools & Spas



Lake Ridge Shopping Center



Subject

Secure Storage Sheds

NHC





MITCH COX
REALTOR, INC.

2304 Silverdale Drive, Suite 200, Johnson City, TN 37601
423-282-6582 (o) 423-282-5903 (f) www.mitchcox.com