

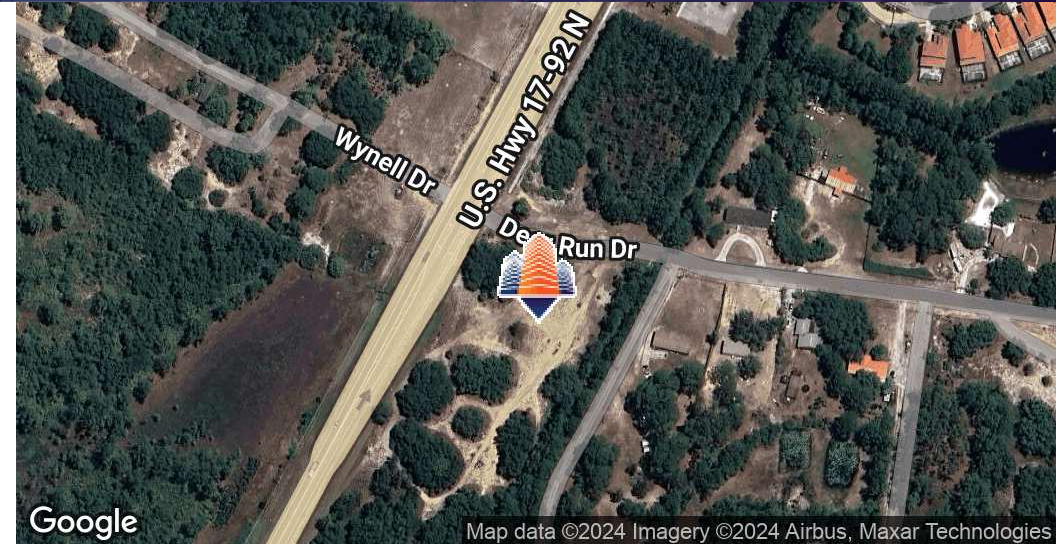
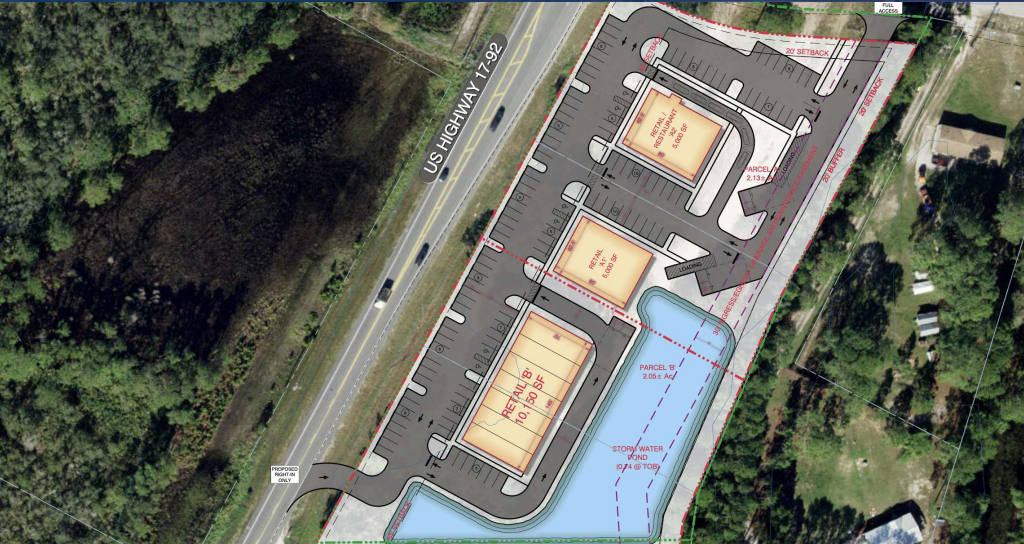
# Davenport Retail Development

4134 U.S. Highway 17-92 North, Davenport, FL 33837



EQUITY  
INVESTMENT  
SERVICES

## PROPERTY SUMMARY



### PROPERTY HIGHLIGHTS

- Up to 4.2 acres available in ascending market
- Thousands of rooftops coming to the immediate area
- 21,500+ cars on 17-92
- Access from both 17-92 and Deer Run Road
- Minutes from Kinney Harmon Rd/Poinciana Parkway; the main thoroughfare for the 80,000+ Residents from Poinciana to I-4
- Ideal Uses: Gas, QSR, Full Service Restaurant, Medical, Auto, and Traditional Retailers

[CLICK HERE FOR SURVEY](#)

### OFFERING SUMMARY

Lease Rate:	Negotiable
Lot Size:	0.75 - 4.2 Acres
Available SF:	2,000 - 20,000 SF

DEMOGRAPHICS	1 MILE	3 MILES	5 MILES
Total Households	1,698	8,802	25,961
Total Population	5,149	25,570	72,943
Average HH Income	\$73,770	\$88,858	\$91,260

Nick Barbato

954.579.2672

nbarbato@eisre.com

Eric Portnoy

954.242.2010

eportnoy@eisre.com



7575 Dr. Phillips Blvd, Ste 390

Orlando, FL 32819

[www.eisre.com](http://www.eisre.com)

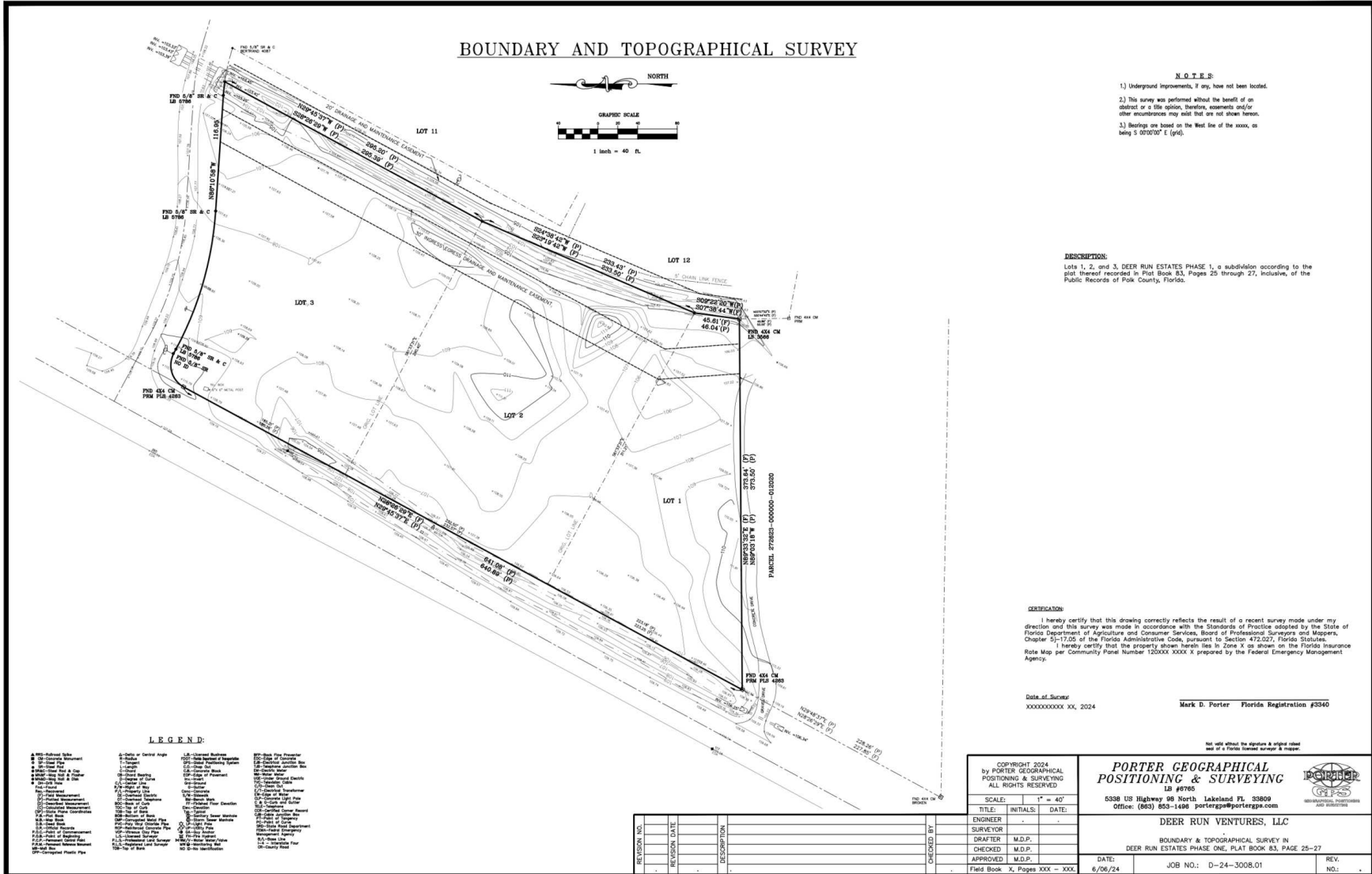
# Davenport Retail Development

4134 U.S. Highway 17-92 North, Davenport, FL 33837



EQUITY  
INVESTMENT  
SERVICES

## SURVEY



Nick Barbato  
954.579.2672  
nbarbato@eisre.com

Eric Portnoy  
954.242.2010  
eportnoy@eisre.com



7575 Dr. Phillips Blvd, Ste 390  
Orlando, FL 32819  
www.eisre.com

# Davenport Retail Development

4134 U.S. Highway 17-92 North, Davenport, FL 33837



EQUITY  
INVESTMENT  
SERVICES

## AERIAL MAP



Nick Barbato

954.579.2672

nbarbato@eisre.com

Eric Portnoy

954.242.2010

eportnoy@eisre.com



7575 Dr. Phillips Blvd, Ste 390

Orlando, FL 32819

www.eisre.com

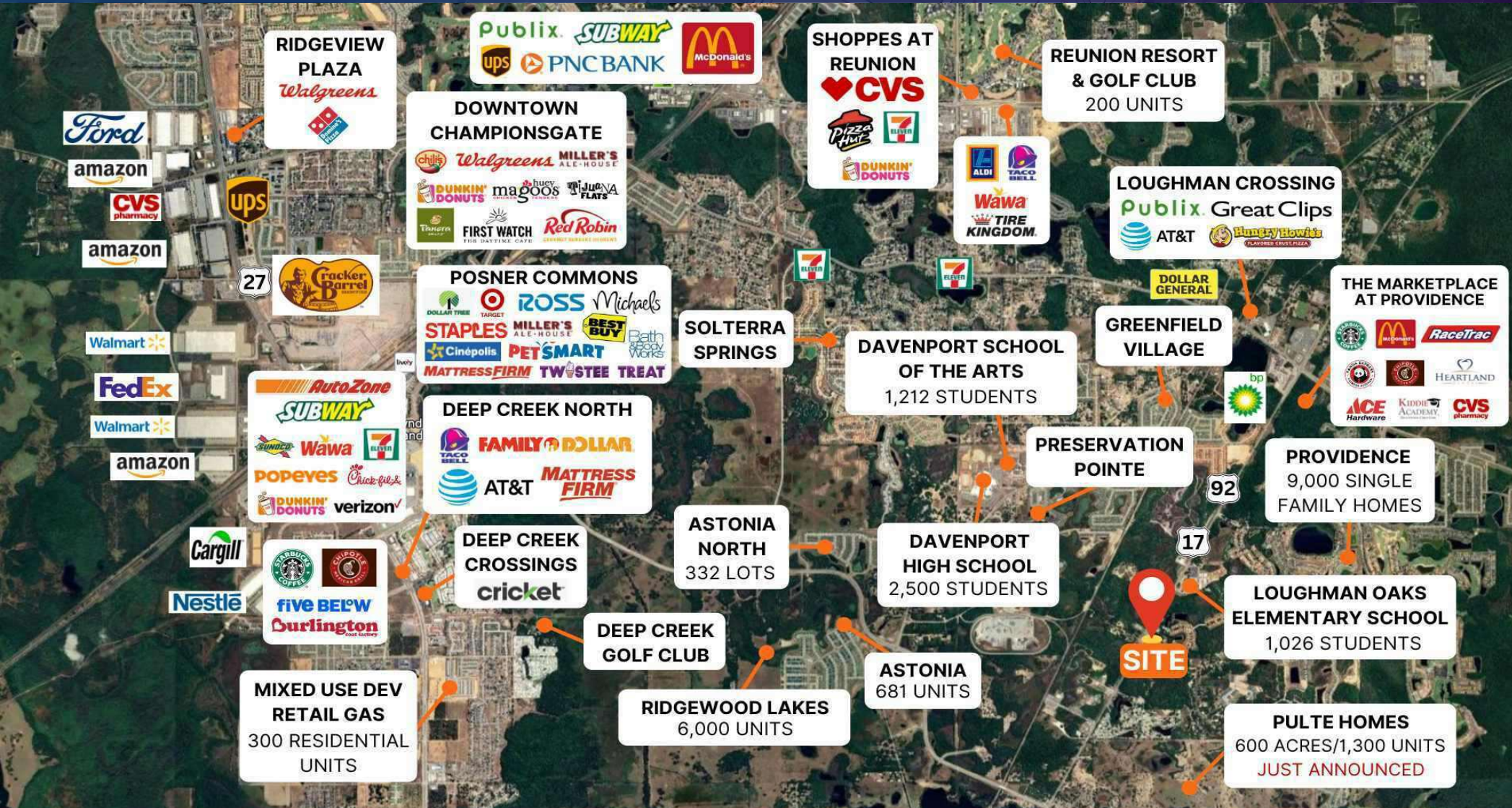
# Davenport Retail Development

4134 U.S. Highway 17-92 North, Davenport, FL 33837



EQUITY  
INVESTMENT  
SERVICES

## RETAILER MAP



Nick Barbato  
954.579.2672  
nbarbato@eisre.com

Eric Portnoy  
954.242.2010  
eportnoy@eisre.com



7575 Dr. Phillips Blvd, Ste 390  
Orlando, FL 32819  
www.eisre.com

# Davenport Retail Development

4134 U.S. Highway 17-92 North, Davenport, FL 33837



EQUITY  
INVESTMENT  
SERVICES

## DEMOGRAPHICS MAP & REPORT



POPULATION	1 MILE	3 MILES	5 MILES
Total Population	5,149	25,570	72,943
Average Age	38	38	40
Average Age (Male)	38	38	40
Average Age (Female)	39	38	41
HOUSEHOLDS & INCOME	1 MILE	3 MILES	5 MILES
Total Households	1,698	8,802	25,961
# of Persons per HH	3.03	2.91	2.80
Average HH Income	\$73,770	\$88,858	\$91,260
Average House Value	\$413,889	\$384,355	\$360,884

Nick Barbato

954.579.2672

nbarbato@eisre.com

Eric Portnoy

954.242.2010

eportnoy@eisre.com



7575 Dr. Phillips Blvd, Ste 390

Orlando, FL 32819

www.eisre.com