

# 3125 SW 89th Street

Oklahoma City, OK 73159

## Contact Us

**Hannah Mazur**

Associate

+1 405 607 6247

[hannah.mazur@cbre.com](mailto:hannah.mazur@cbre.com)

## Property Features

- + Space Available: ±5,000 SF\*
- + Sublease Term: Expires January 2031
- + Lease Rate: \$16.00/SF NNN
- + ±1.19 Acres
- + 45 Surface Parking Spaces (9.00 spaces per 1,000 SF)
- + Private Offices
- + Open, Back-Office Workspace
- + Conference Room
- + Training Room
- + Storage Closet
- + ADA Restrooms
- + Kitchen/Breakroom
- + Located in a Strong Medical Corridor
- + Immediate Access to Interstate 44

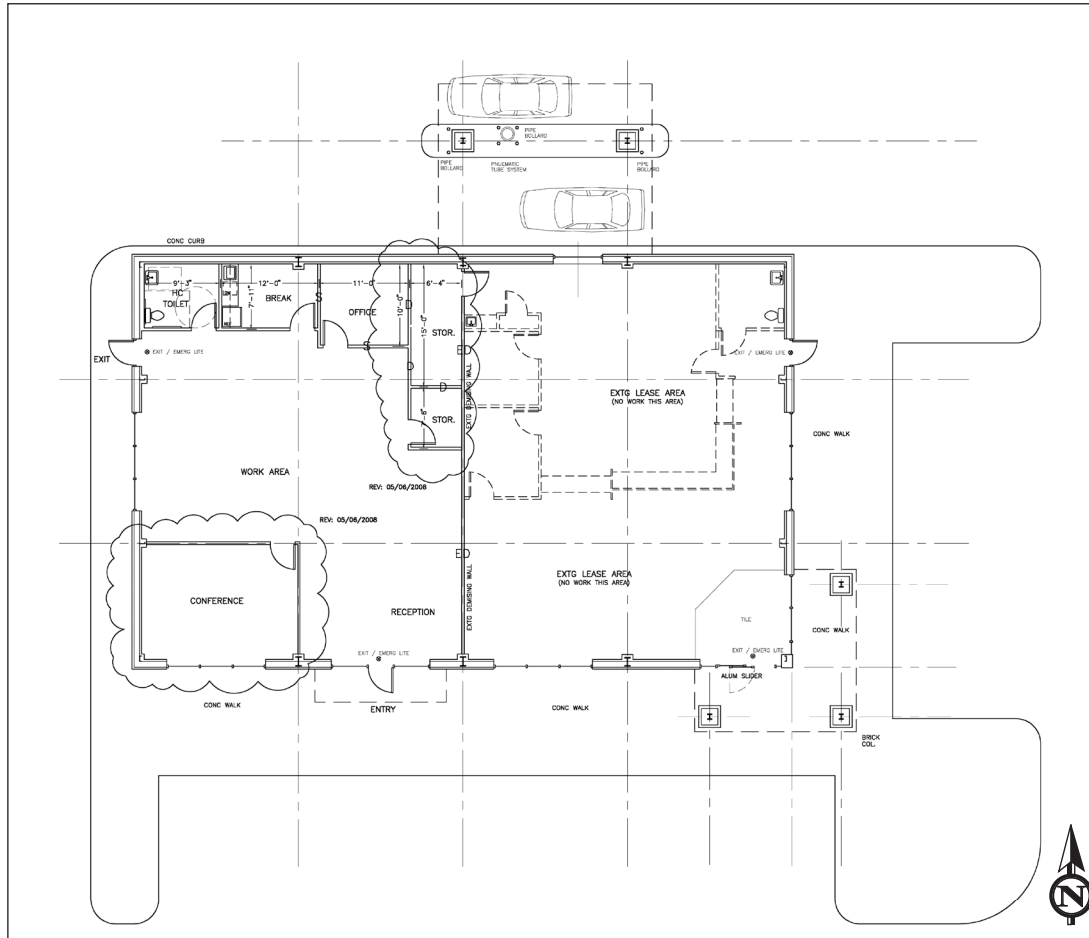
\*Source: Owner



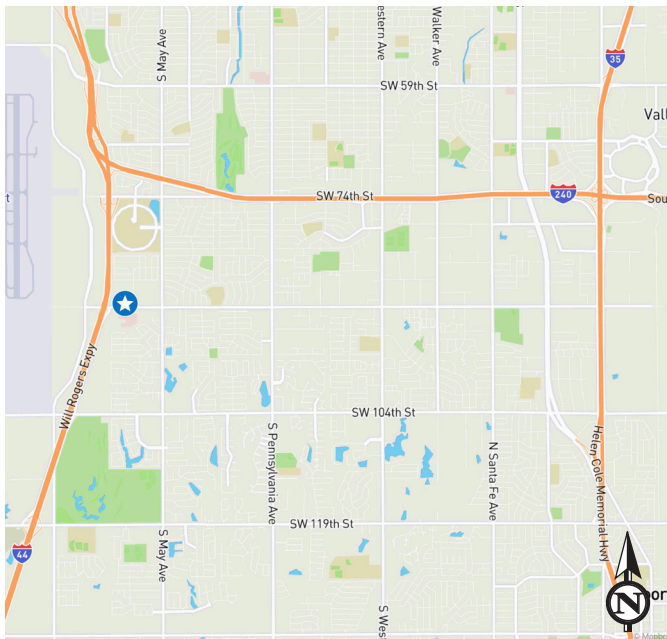
## 3125 SW 89TH STREET

3125 SW 89th Street | Oklahoma City, OK 73159

For Sublease



Floor Plan



© 2026 CBRE, Inc. All rights reserved. This information has been obtained from sources believed reliable, but has not been verified for accuracy or completeness. You should conduct a careful, independent investigation of the property and verify all information. Any reliance on this information is solely at your own risk. CBRE and the CBRE logo are service marks of CBRE, Inc. All other marks displayed on this document are the property of their respective owners, and the use of such logos does not imply any affiliation with or endorsement of CBRE. Photos herein are the property of their respective owners. Use of these images without the express written consent of the owner is prohibited.