

## Specifications

±5,000 SF  
BUILDING 1

±2,800 SF  
BUILDING 2

±5,700 SF  
BUILDING 3

±2.37 AC (Block 566.02, Lot 6)  
LOT SIZE

Mostly Paved with Asphalt  
PARKING

VB – Village Business  
ZONING

\$42,824.78  
TAXES (2025)

\$3,500,000  
SALE PRICE

0.9 Miles to Route 9  
1.0 Miles to GSP Exit 81  
1.1 Miles to Route 37  
ACCESSIBILITY

For additional property information or to arrange an inspection, please contact the exclusive brokers:

**Jason M. Crimmins, CCIM, SIOR, Chief Executive Officer**, 973.379.6644 x 122, [jmcrimmins@blauberg.com](mailto:jmcrimmins@blauberg.com)

**Alessandro (Alex) Conte, CCIM, SIOR, President**, 973.379.6644 x 131, [aconte@blauberg.com](mailto:aconte@blauberg.com)

**Charles T. Kavanagh, SIOR, Executive Vice President**, 973.379.6644 x 113, [ctkavanagh@blauberg.com](mailto:ctkavanagh@blauberg.com)

**Peter J. Murano, Jr., Managing Executive Director**, 973.379.6644 x 114, [pjmurano@blauberg.com](mailto:pjmurano@blauberg.com)





For additional property information or to arrange an inspection, please contact the exclusive brokers:

**Jason M. Crimmins, CCIM, SIOR, Chief Executive Officer**, 973.379.6644 x 122, [jmcrimmins@blauberg.com](mailto:jmcrimmins@blauberg.com)

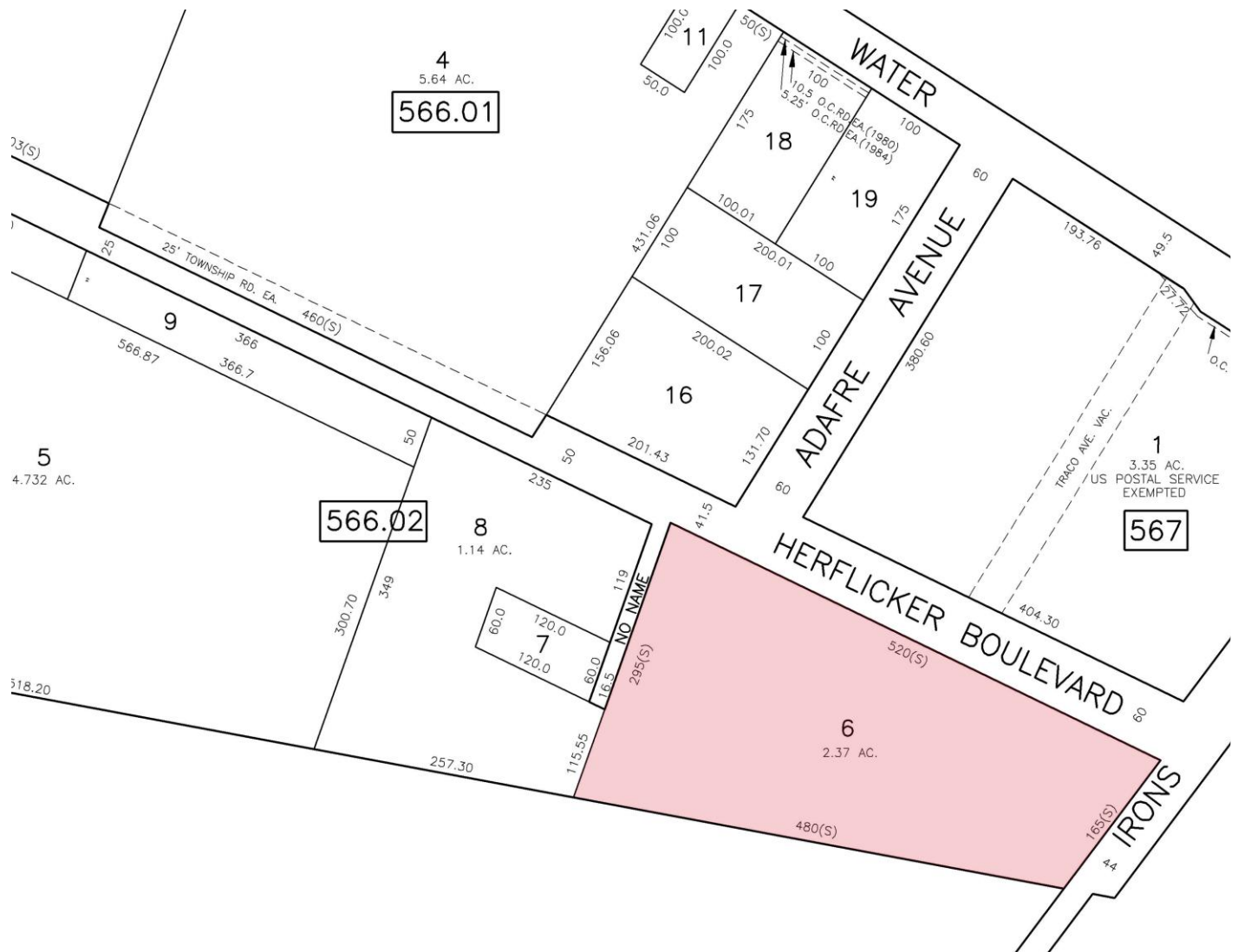
**Alessandro (Alex) Conte, CCIM, SIOR, President**, 973.379.6644 x 131, [aconte@blauberg.com](mailto:aconte@blauberg.com)

**Charles T. Kavanagh, SIOR, Executive Vice President**, 973.379.6644 x 113, [ctkavanagh@blauberg.com](mailto:ctkavanagh@blauberg.com)

**Peter J. Murano, Jr., Managing Executive Director**, 973.379.6644 x 114, [pjmurano@blauberg.com](mailto:pjmurano@blauberg.com)

The information contained herein has been obtained from sources considered to be reliable, but no guarantee of its accuracy is made by this company. In addition, no representation is made respecting zoning, condition of title, dimensions, or any matters of a legal or environmental nature. Such matters should be referred to legal counsel for determination. Terms and conditions are subject to change without prior notice. Subject to errors and omissions.





For additional property information or to arrange an inspection, please contact the exclusive brokers:

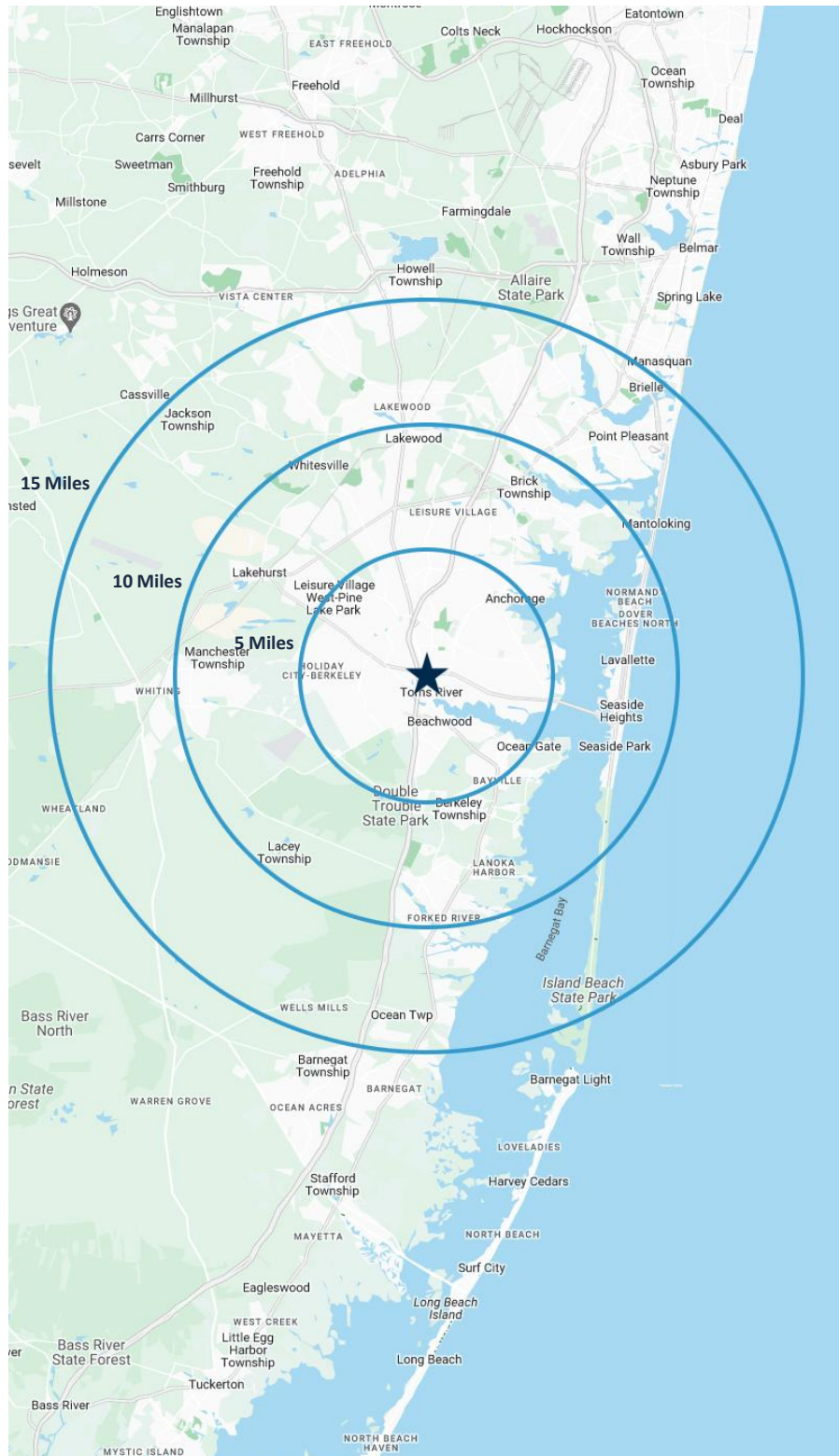
**Jason M. Crimmins, CCIM, SIOR, Chief Executive Officer**, 973.379.6644 x 122, [jmcrimmins@blauberg.com](mailto:jmcrimmins@blauberg.com)

**Alessandro (Alex) Conte, CCIM, SIOR, President**, 973.379.6644 x 131, [aconte@blauberg.com](mailto:aconte@blauberg.com)

**Charles T. Kavanagh, SIOR, Executive Vice President**, 973.379.6644 x 113, [ctkavanagh@blauberg.com](mailto:ctkavanagh@blauberg.com)

**Peter J. Murano, Jr., Managing Executive Director**, 973.379.6644 x 114, [pjmurano@blauberg.com](mailto:pjmurano@blauberg.com)

The information contained herein has been obtained from sources considered to be reliable, but no guarantee of its accuracy is made by this company. In addition, no representation is made respecting zoning, condition of title, dimensions, or any matters of a legal or environmental nature. Such matters should be referred to legal counsel for determination. Terms and conditions are subject to change without prior notice. Subject to errors and omissions.



## 5 MILES

- Total Population: 132,895
- Households: 52,072
- Median Household Income: \$92,759
- Average Household Size: 2.5
- Transportation to Work: 57,614
- Labor Force: 106,468

## 10 MILES

- Total Population: 392,473
- Households: 149,179
- Median Household Income: \$87,376
- Average Household Size: 2.6
- Transportation to Work: 155,058
- Labor Force: 305,399

## 15 MILES

- Total Population: 619,170
- Households: 228,963
- Median Household Income: \$96,648
- Average Household Size: 2.7
- Transportation to Work: 255,121
- Labor Force: 480,634

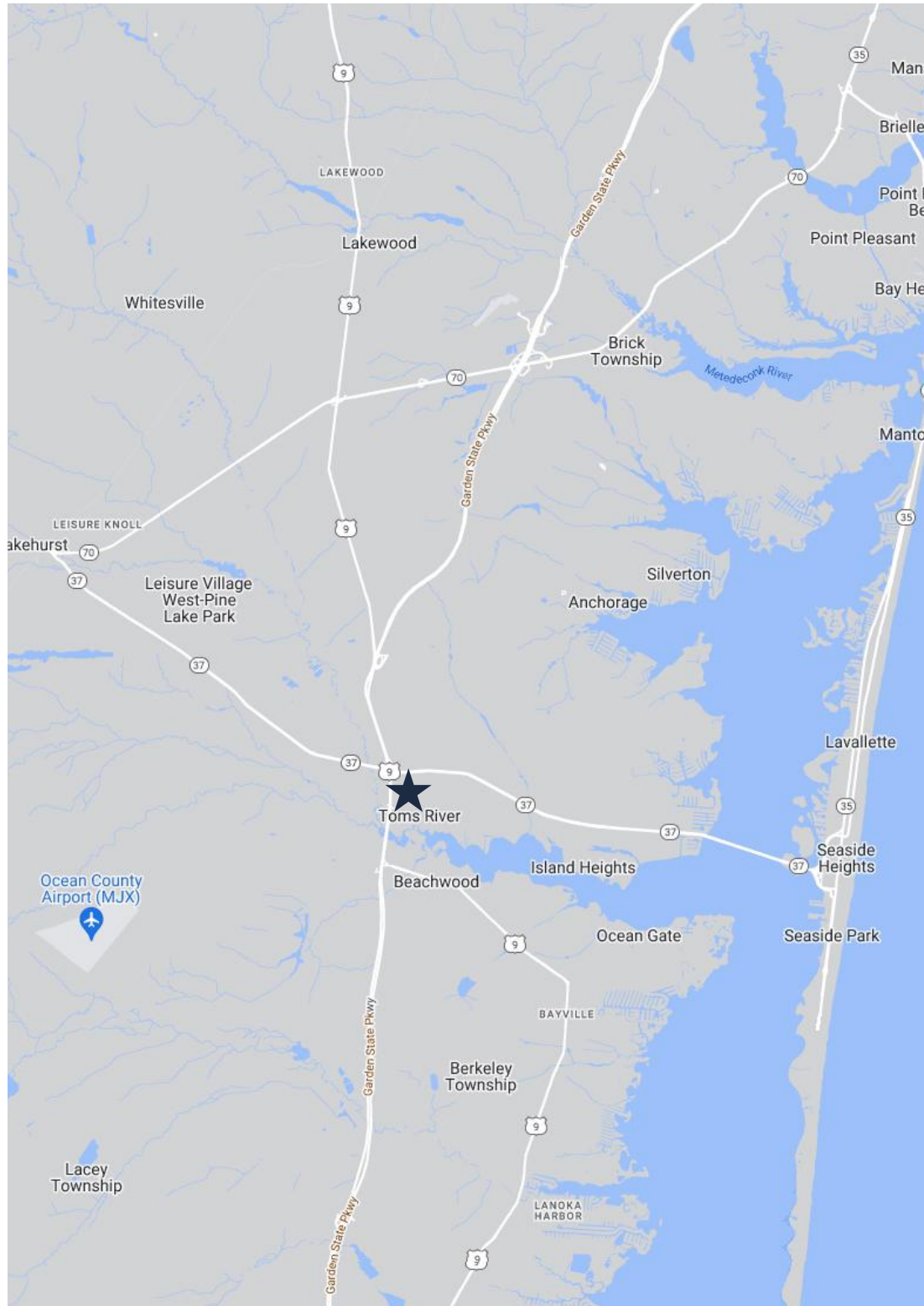
For additional property information or to arrange an inspection, please contact the exclusive brokers:

**Jason M. Crimmins, CCIM, SIOR, Chief Executive Officer**, 973.379.6644 x 122, [jmcrimmins@blauberg.com](mailto:jmcrimmins@blauberg.com)

**Alessandro (Alex) Conte, CCIM, SIOR, President**, 973.379.6644 x 131, [aconte@blauberg.com](mailto:aconte@blauberg.com)

**Charles T. Kavanagh, SIOR, Executive Vice President**, 973.379.6644 x 113, [ctkavanagh@blauberg.com](mailto:ctkavanagh@blauberg.com)

**Peter J. Murano, Jr., Managing Executive Director**, 973.379.6644 x 114, [pjmurano@blauberg.com](mailto:pjmurano@blauberg.com)



## ACCESSIBILITY



0.9 MI  
Route 9



1.0 MI  
GSP Exit 81



1.1 MI  
Route 37

For additional property information or to arrange an inspection, please contact the exclusive brokers:

**Jason M. Crimmins, CCIM, SIOR, Chief Executive Officer**, 973.379.6644 x 122, [jmcrimmins@blauberg.com](mailto:jmcrimmins@blauberg.com)

**Alessandro (Alex) Conte, CCIM, SIOR, President**, 973.379.6644 x 131, [aconte@blauberg.com](mailto:aconte@blauberg.com)

**Charles T. Kavanagh, SIOR, Executive Vice President**, 973.379.6644 x 113, [ctkavanagh@blauberg.com](mailto:ctkavanagh@blauberg.com)

**Peter J. Murano, Jr., Managing Executive Director**, 973.379.6644 x 114, [pjmurano@blauberg.com](mailto:pjmurano@blauberg.com)

The information contained herein has been obtained from sources considered to be reliable, but no guarantee of its accuracy is made by this company. In addition, no representation is made respecting zoning, condition of title, dimensions, or any matters of a legal or environmental nature. Such matters should be referred to legal counsel for determination. Terms and conditions are subject to change without prior notice. Subject to errors and omissions.