



Office/retail space available in Allen, TX

- Easily accessible, located near I-75, and Sam Rayburn Tollway
- Site offers excellent visibility, strong traffic exposure, and convenient access
- Indoor gym, outdoor play area fully equipped with sport court, baseball field, soccer field, water park
- Great location for daycare, school, surgery center, professional offices, or medical offices



21,154 rsf available



Built in 2004



3.22/1,000 sf
parking ratio



Former high-end
daycare facility

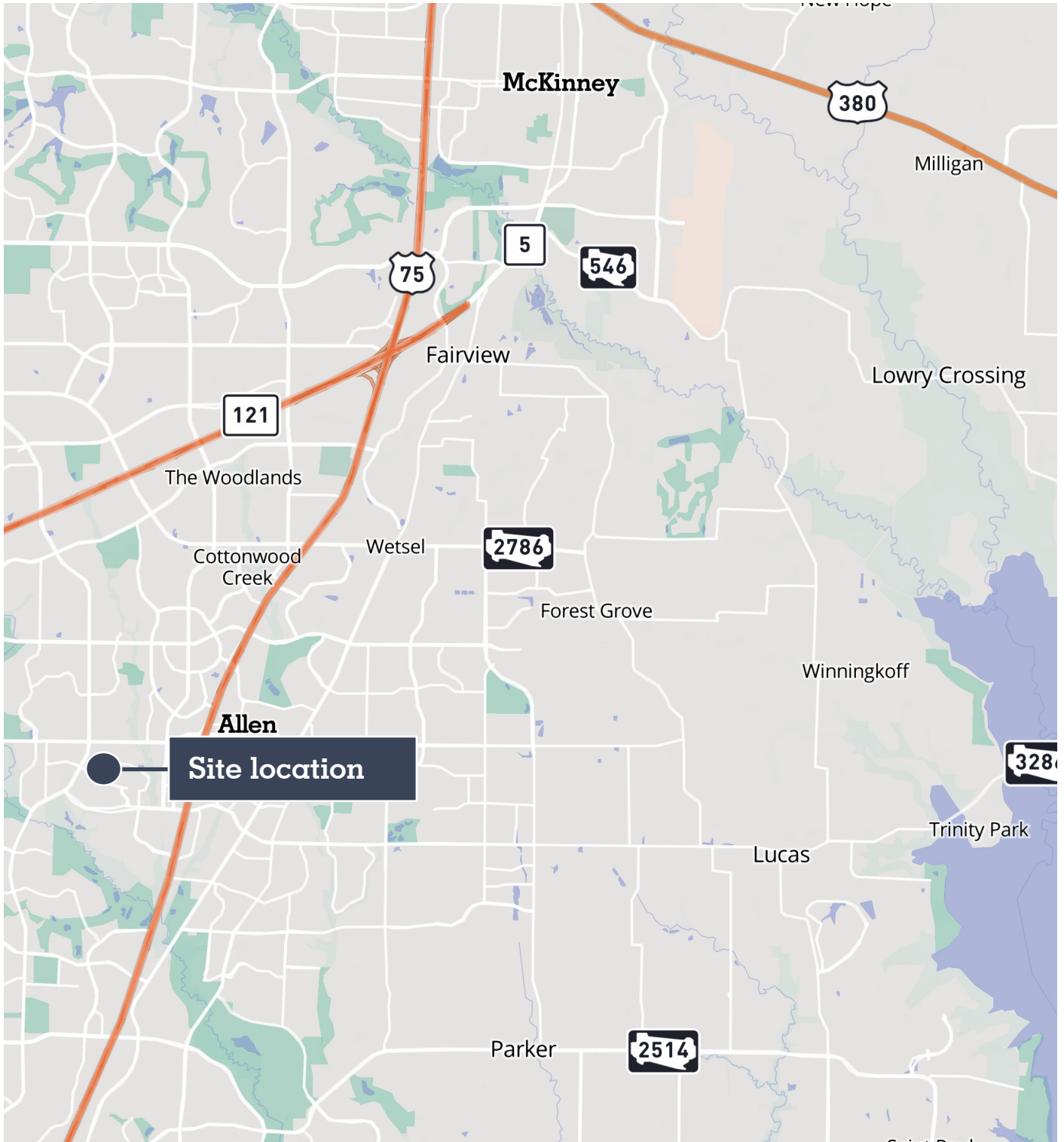
**Get more
information**

Michael Bowles
Vice President
M: 214 729 8838

avisonyoung.com

Location Map

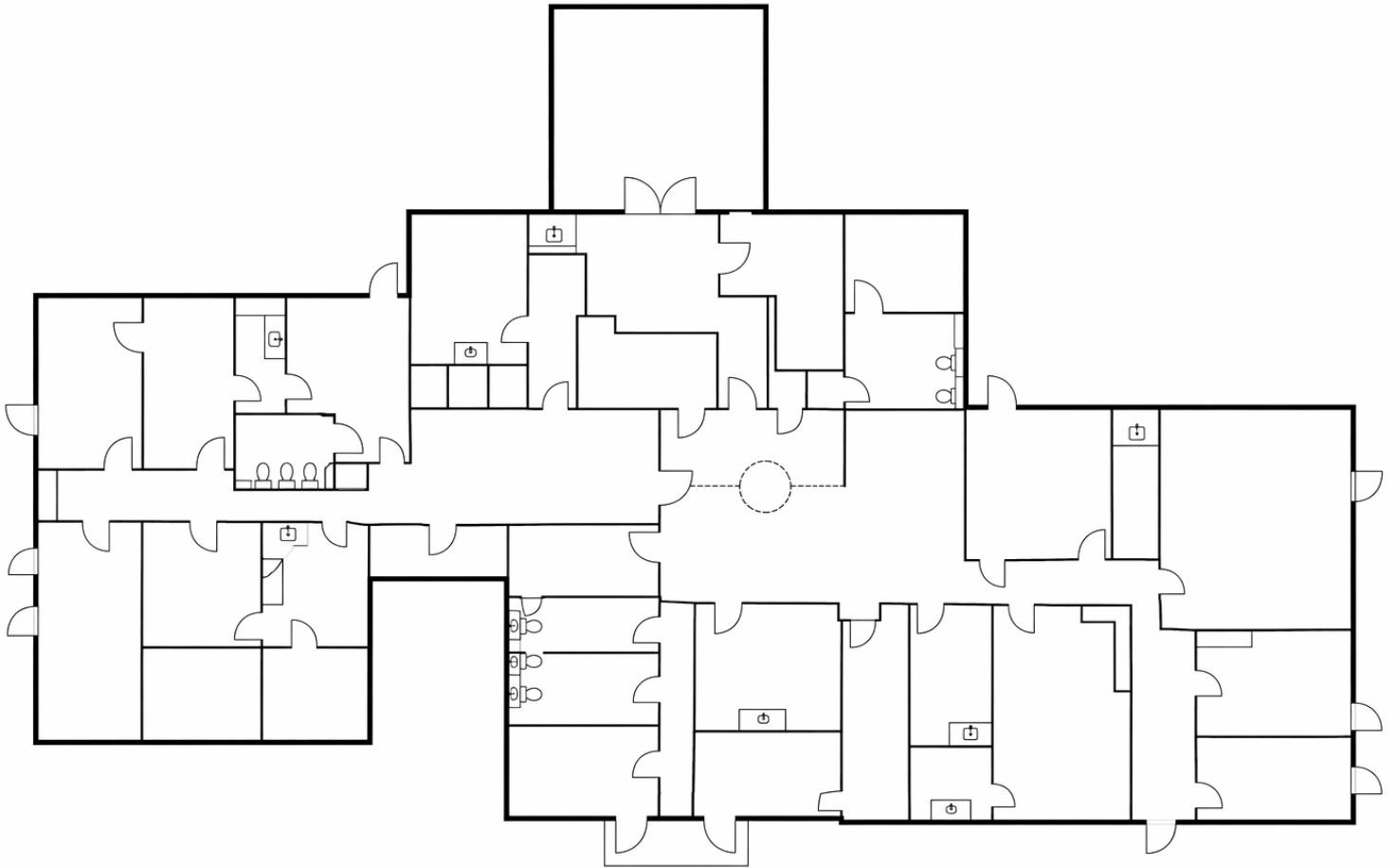
1207 W McDermott Dr



Floor plans

1207 W McDermott Dr

1ST FLOOR | 21,154 SF





Get more information

Michael Bowles
Vice President
M: 214 729 8838

avisonyoung.com