



FOR LEASE

5536 NE ANTIOCH ROAD, KANSAS CITY, MO

ANTIOCH ANNEX SHOPPING CENTER Great Retail/Office Space Available



5526 - 1,620 sf

\$12.00 psf + NNN

(\$6.15 psf) to all suites



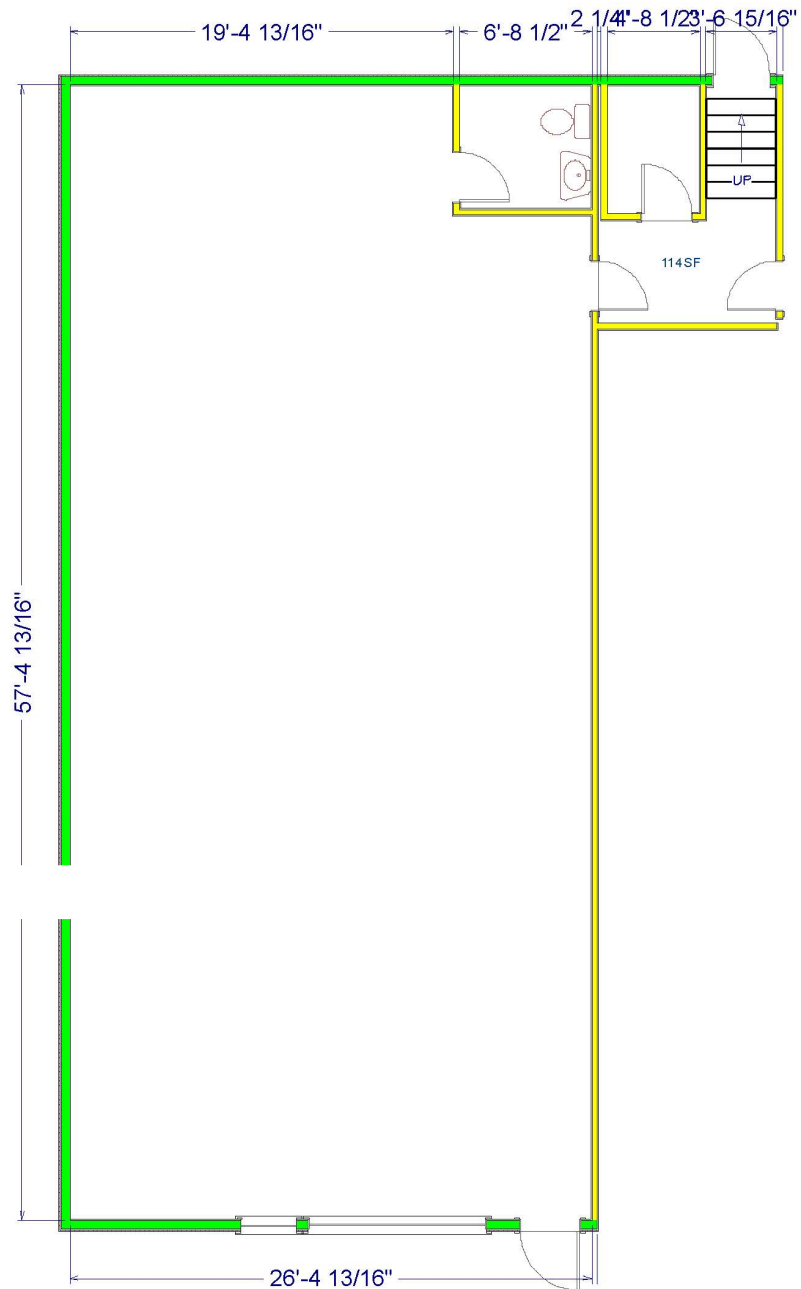
Dan Sweeney • 816-414-5226 • dsweeney@curryre.com

2700 Kendallwood Pkwy., Gladstone, MO 64119

www.curryre.com



5536 NE ANTIOCH ROAD, KANSAS CITY, MO



Dan Sweeney • 816-414-5226 • dsweeney@curryre.com
2700 Kendallwood Pkwy., Gladstone, MO 64119
www.curryre.com



5536 NE ANTIOCH ROAD, KANSAS CITY, MO

Located Directly West of Antioch Crossing where the Walmart Neighborhood Market is Anchored.

Excellent Location Near Two Interstates (I-29 & I-35)

Northland Trade Area has Over 180,000 People in Close Proximity to the Shopping Center

Traffic Counts in Excess of 38,000 (Antioch & Vivion Roads)

Strong, Stable Demographics — Proven

- Community America
- Godfathers Pizza
- ETC Physical Therapy
- Red Wing Shoes
- Antioch Bar & Grill
- Level Up
- Animal Clinic
- Dental Office

- Sherwin Williams
- Big Biscuit
- Elwood Staffing
- True Balance
- Hearing Aid St
- Penmac NKC
- Jiu-jitsu
- Fantastic Sam's

DOLLAR TREE

1,620 sf

- Salon E'Clips
- Duck Donuts



Dan Sweeney • 816-414-5226 • dsweeney@curryre.com
2700 Kendallwood Pkwy., Gladstone, MO 64119
www.curryre.com

5536 NE ANTIOCH ROAD, KANSAS CITY, MO

Demographics	1 Mile	3 Mile	5 Mile
Population 2023	11,006	84,588	150,520
Population 2028	11,206	86,728	155,848
Population Growth 2023-2028	0.4%	0.5%	0.7%
Average Household Income	\$76,747	\$74,511	\$80,058
Median Home Value	\$161,806	\$167,791	\$178,428



All information furnished regarding property for sale or lease is from sources deemed reliable, but no warranty or representation is made as to the accuracy thereof and the same is subject to errors, omissions, changes of prices, rental or other conditions, prior sale or lease or withdrawal without notice.