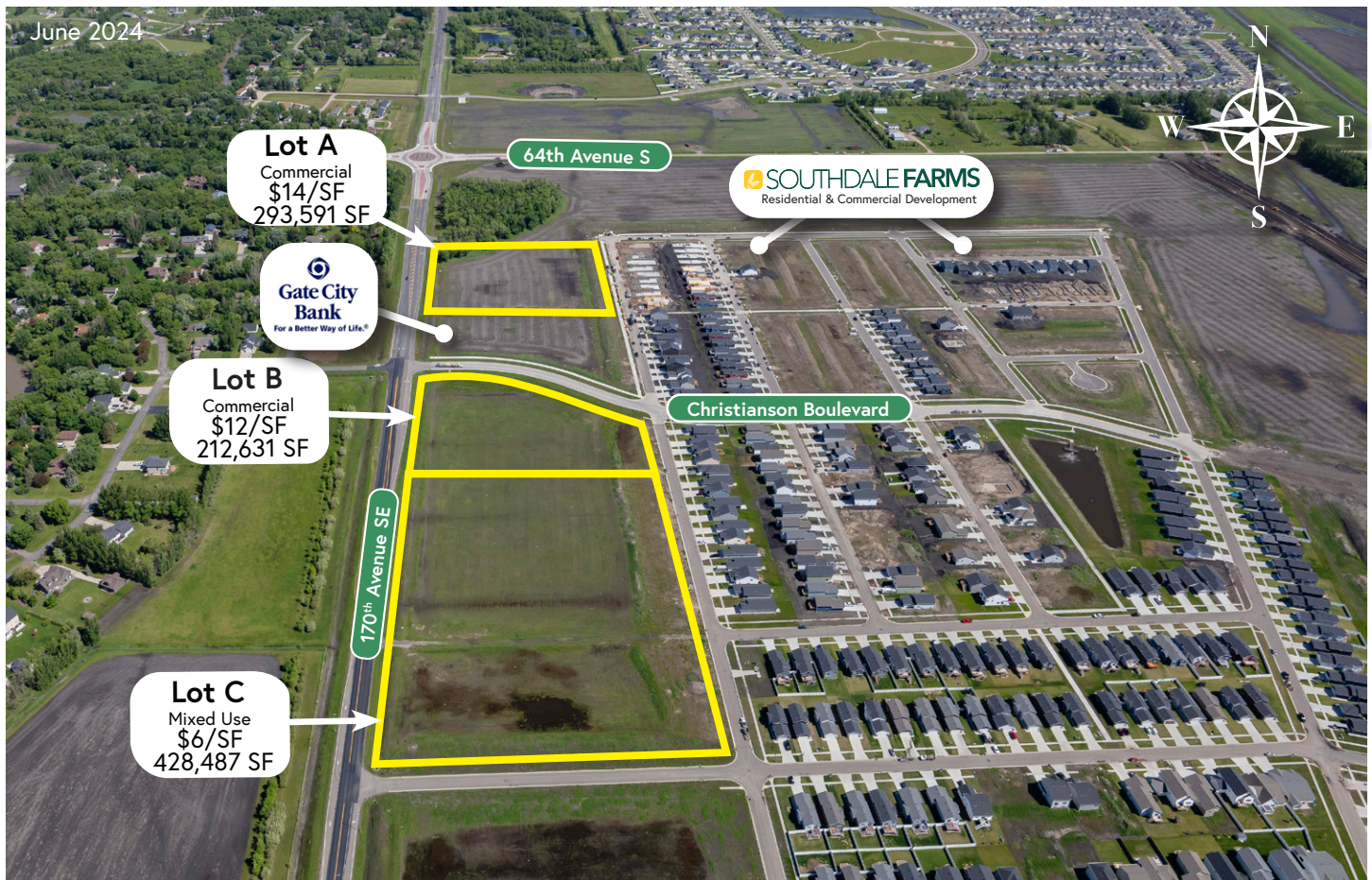


FOR SALE SOUTHDALE FARMS

Horace, ND 58047

MLS #21-218, #21-219, #22-547



ABOUT THE PROPERTY

The City of Horace was named 2019 City of the Year by the North Dakota League of Cities. Horace is one of the fastest-growing cities in North Dakota continued expansion in the residential and business sectors sets a projected growth rate of 220% in the next 5-7 years. An additional 7,700 workers are expected to be brought to the area for the new Fargo Diversion Project.

This commercial land is located within the Southdale Farms Development on high traffic Sheyenne Street.

Commercial Parcels are available for Sale or Build to Suit!



TRAVIS VOEGELE | REALTOR®

701.499.3916
travis@prgcommercial.com
www.PropertyResourcesGroup.com

All information contained herein is believed to be true, but should be verified to the buyer's satisfaction in case of error, typographical or otherwise. All information is subject to change without further notice.



TRAVIS VOEGELE | REALTOR®

701.499.3916
travis@prgcommercial.com
www.PropertyResourcesGroup.com

All information contained herein is believed to be true, but should be verified to the buyer's satisfaction in case of error, typographical or otherwise. All information is subject to change without further notice.