

125 Maiden Lane

Between Pearl & Water Streets

Brand New Prebuilt

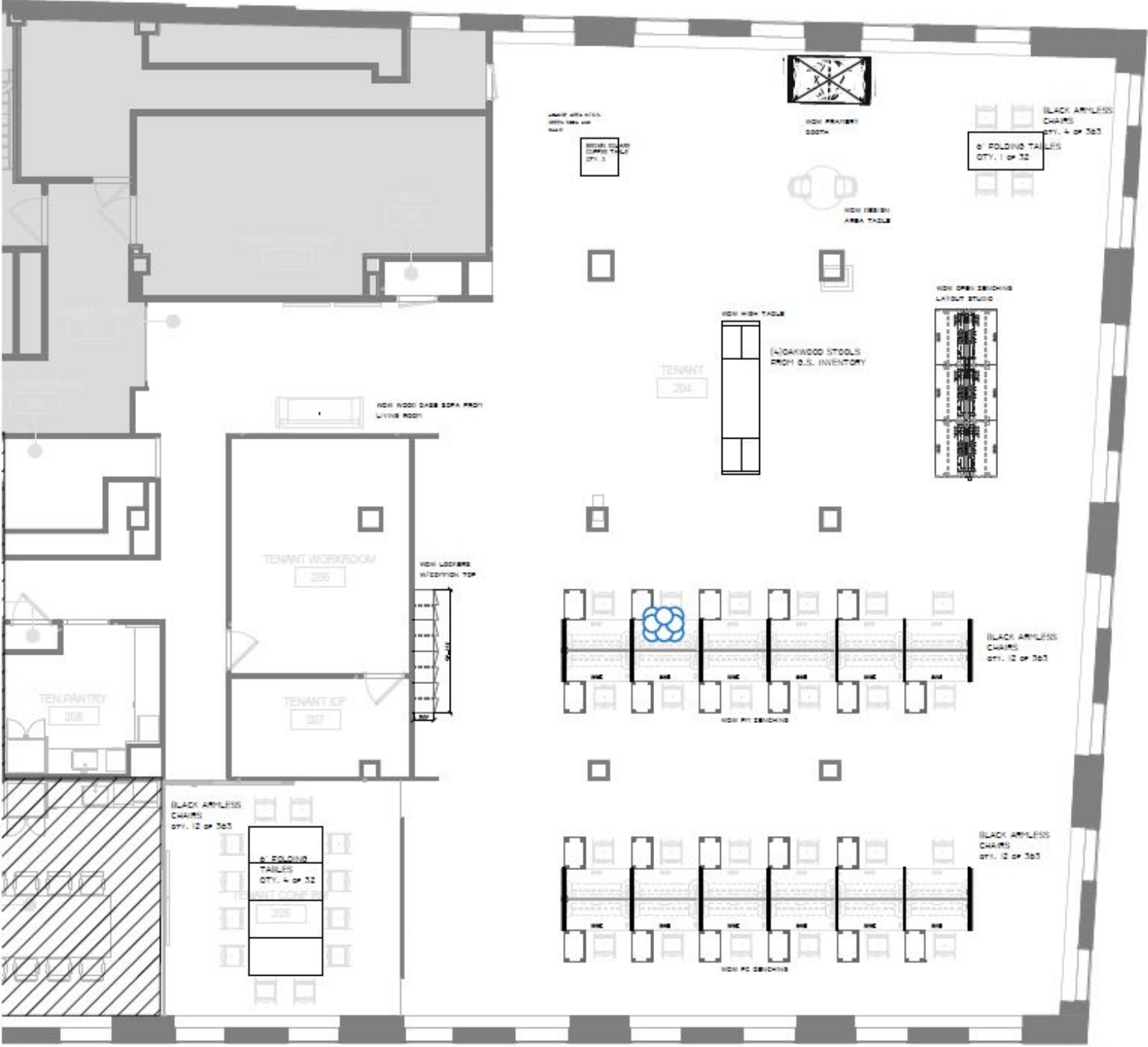
- Area:
Partial 2nd Floor - 10,877 RSF
- Rental Rate:
Upon Request
- Possession:
Immediate
- Term:
1 - 5 Years

VIDEO TOUR



Comments:

- Brand new installation
 - Built with mostly open area, large eat-in pantry, large conference room with exposed ceilings, reception & IT/Storage room
 - Corner unit - 3 sides of windows
 - Tenant Exclusive Building Amenities: Exercise Studio, Rooftop Deck, Art Gallery in Lobby
 - Touchless features throughout (faucets and lights)
- Strong landlord (office condo)
 - Flexible lease term: Open to 12 months - 10 years
 - Great natural light
 - Partially Furnished (Potential to Fully Furnish)
 - Space is fully wired for teleconferencing capabilities
 - Operable windows allowing for maximum air circulation



DOWNLOAD BROCHURE

For information, please contact:

- Andrew Duffy

Associate

t 212-233-8142

Andrew.duffy@ngkf.com
- Todd Stracci

Managing Director

t 212-233-8177

tstracci@ngkf.com
- Hal Stein

Vice Chairman

t 212-233-8185

hstein@ngkf.com

125 Park Avenue
New York, NY 10017
t 212-233-8142
nmrk.com



125 Park Avenue, New York, NY 10017 t 212-233-8142

The information contained herein has been obtained from sources deemed reliable but has not been verified and no guarantee, warranty or representation, either express or implied, is made with respect to such information. Terms of sale or lease and availability are subject to change or withdrawal without notice.

©2021 Newmark. All Rights Reserved.