

Industrial | For Sale or Lease

CBRE

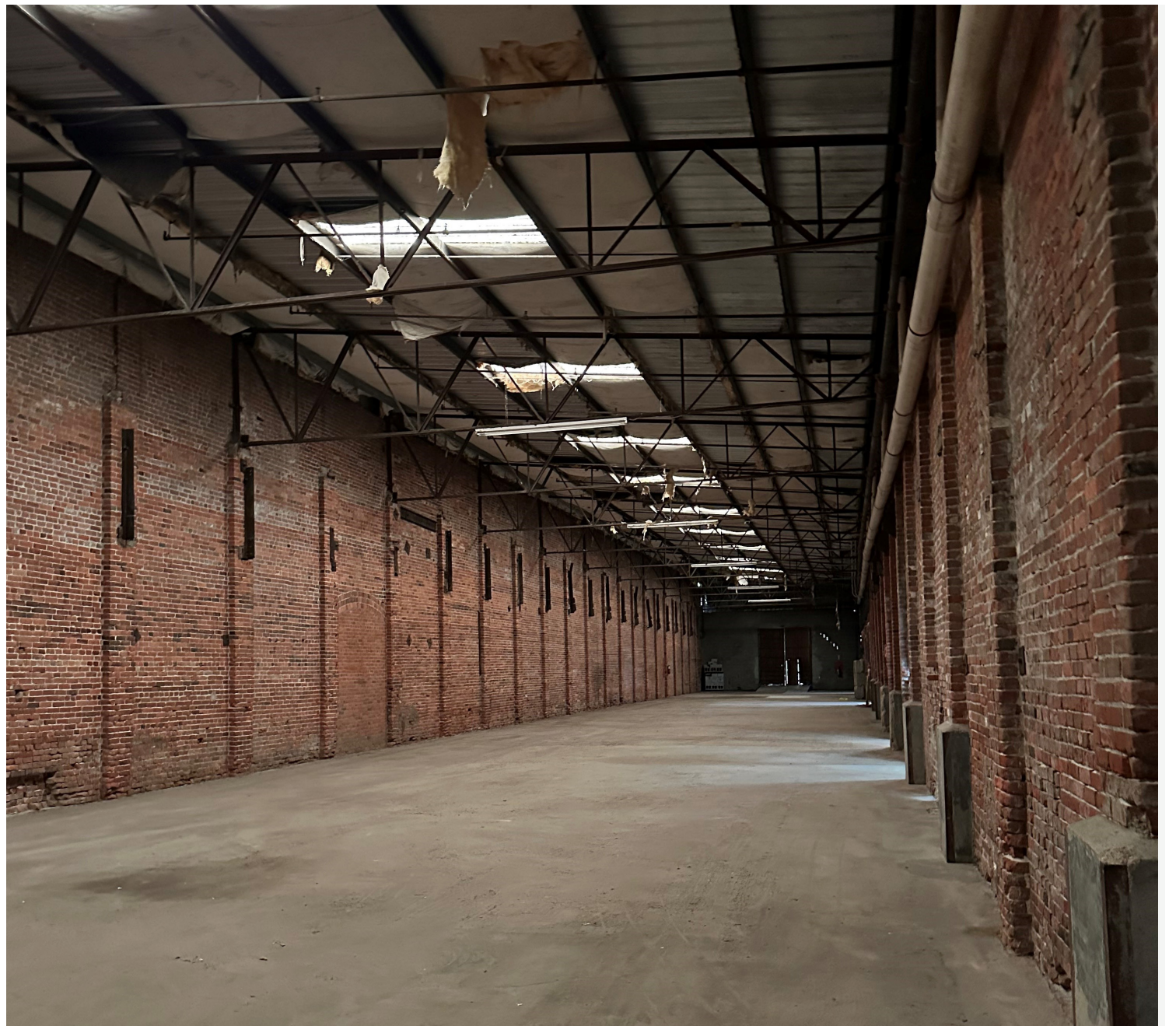
1830 Church Street

±25,229 SF Warehouse with 1 AC Yard

Norfolk, Virginia 23504
www.cbre.com/norfolk



1830 Church Street
Norfolk, Virginia 23504



Property Overview & Amenities

This property borders the rapidly changing Railyard District in Norfolk. The area has recently seen the development of over 200 multi family units and a host of new restaurants, breweries, and retailers. The property is centrally located with easy access to all ports and local interstates.

Property Address	1830 Church Street, Norfolk, VA 23504
Building Size	±25,229 SF warehousespace that includes a 1,000 SF office space with two bathrooms, locker room and counter/reception space
Land Area	1.86 AC
Zoning	I-L
Electrical	Heavy Power - 3 Phase 480V and 220V
Loading	Seven (7) bay doors: Front – One (1) - 12'x14'; One (1) - 14'x14' Side – Two (2) 20'x14', One (1) - 12'x12'; One (1) - 16'x12' Dock level platform with an 8'x8' door
Ceiling Height	17' - 23'
Incentives	Eligible for State & Federal Enterprise Zone, Opportunity Zone, and Historic Tax Credit Incentives
Sale Price	Contact Broker

25,229

Available Space (SF)

1.00

Fully Fenced Yard Area (AC)

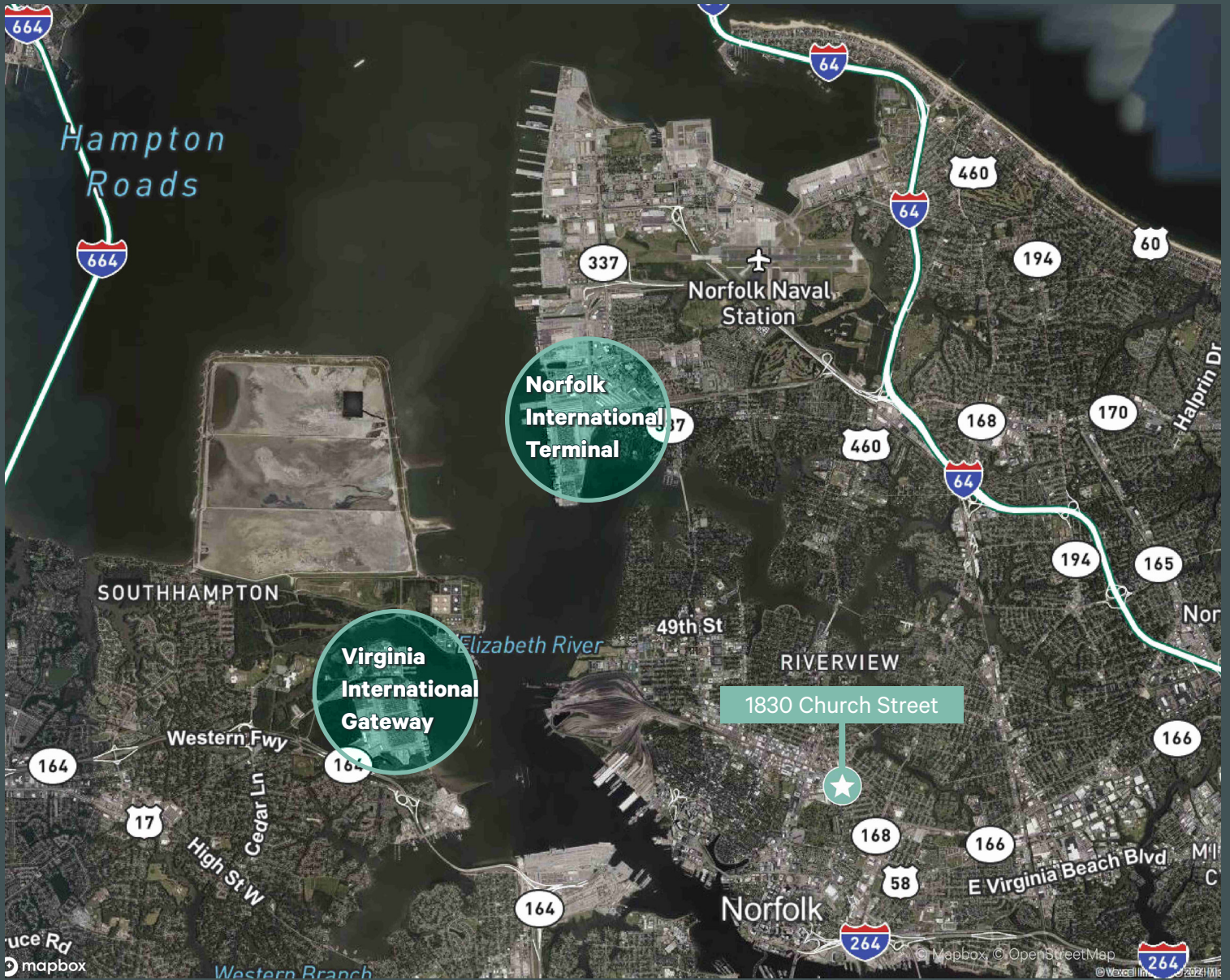
\$8.25

Rental Rate (NNN)



1830 Church Street
Norfolk, Virginia 23504

For Sale or Lease



Contact Us

Jeff Parker, CCIM
Senior Vice President
+1 757 364 6441
jeff.parker@cbre.com

Christopher E. Todd
Senior Vice President
+1 757 448 2132
chris.todd@cbre.com

© 2024 CBRE, Inc. All rights reserved. This information has been obtained from sources believed reliable, but has not been verified for accuracy or completeness. You should conduct a careful, independent investigation of the property and verify all information. Any reliance on this information is solely at your own risk. CBRE and the CBRE logo are service marks of CBRE, Inc. All other marks displayed on this document are the property of their respective owners, and the use of such logos does not imply any affiliation with or endorsement of CBRE. Photos herein are the property of their respective owners. Use of these images without the express written consent of the owner is prohibited.