



 **JLL** SEE A BRIGHTER WAY

# For Sale or Lease

**±56,145 SF Crane-Served Manufacturing Facility on  
±7.989 AC Available**

620 North Houston Ave | Humble, TX 77338



# Overview

## Building 1

- ±36,000 SF total (112' x 280') ±11,300 SF of office - 2 story Overhead Door: One (1) grade level door (20' x 18') Eave Height: 35' Power: 3 phase heavy power
- Cranes: - One (1) 15-ton - One (1) 10-ton - One (1) 5-ton - Twelve (12) 2-ton JIBs
- 

## Building 3

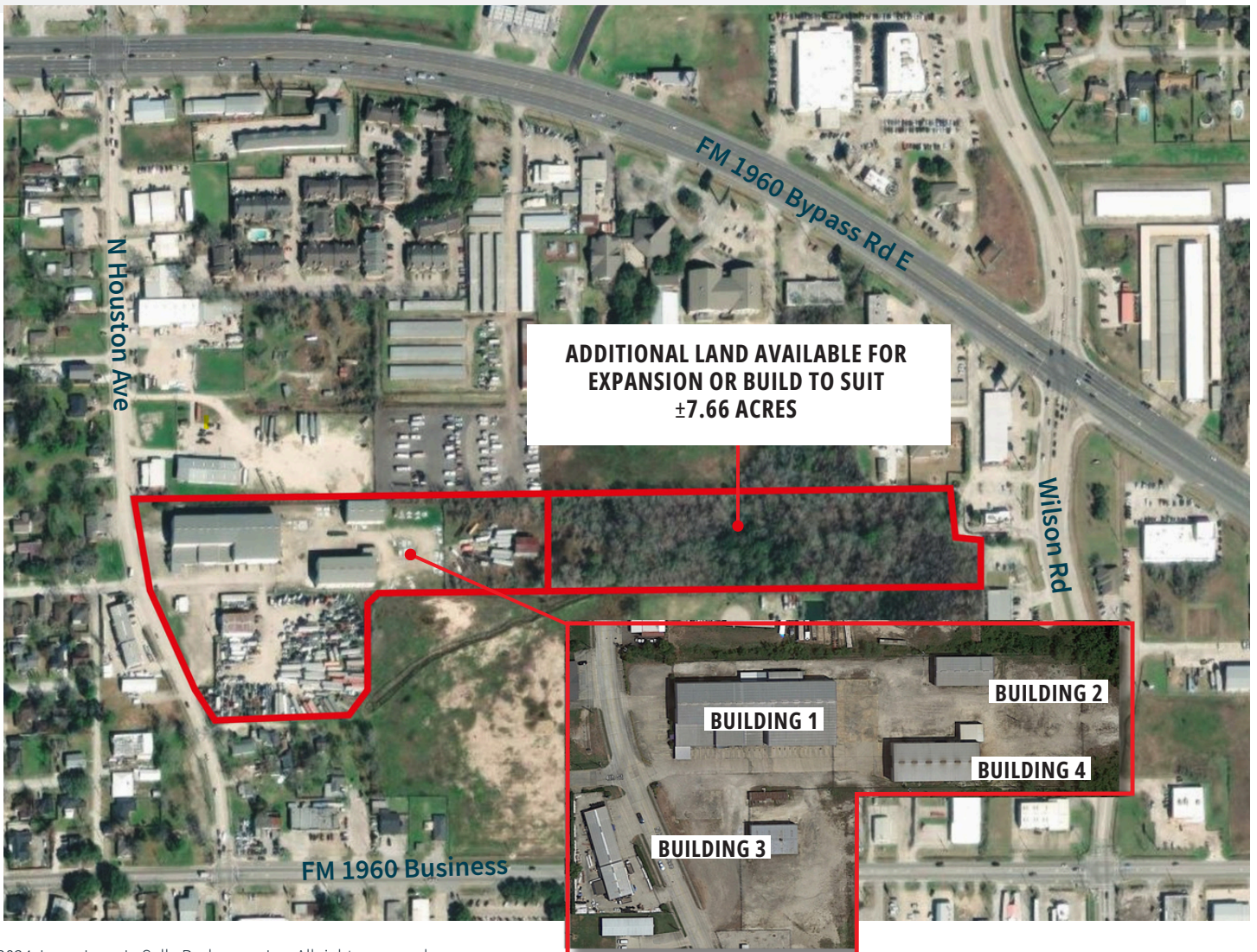
- ±4,000 SF total (80' x 50')
- Overhead Door: Two (2) grade level
- Eave Height: 24'
- Cranes: - One (1) 5-ton

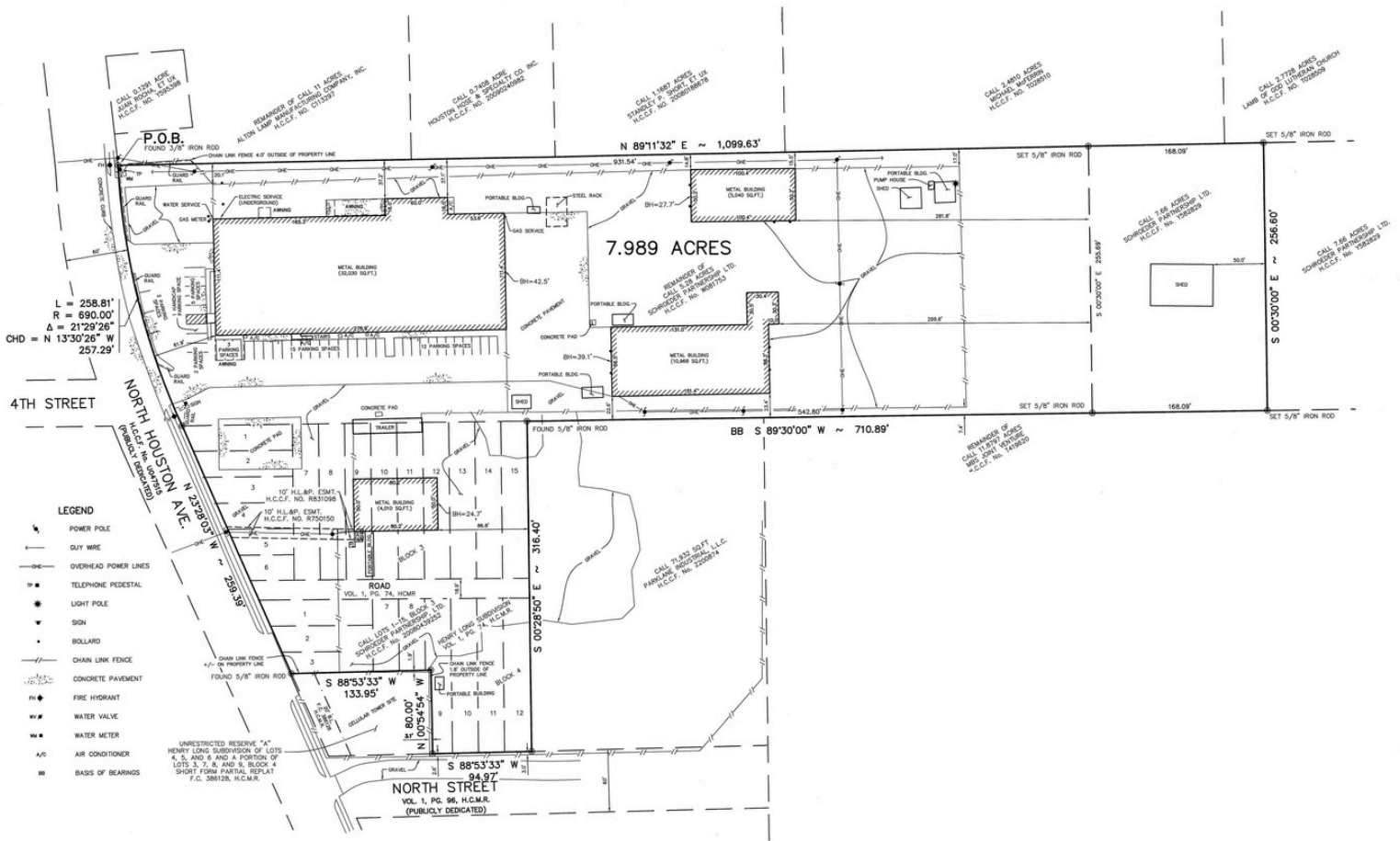
## Building 2

- ±5,000 SF total (50' x 100') Overhead
- Door: Two (2) grade level Eave
- Height: 22' Cranes: - One (1) 5-ton
- 

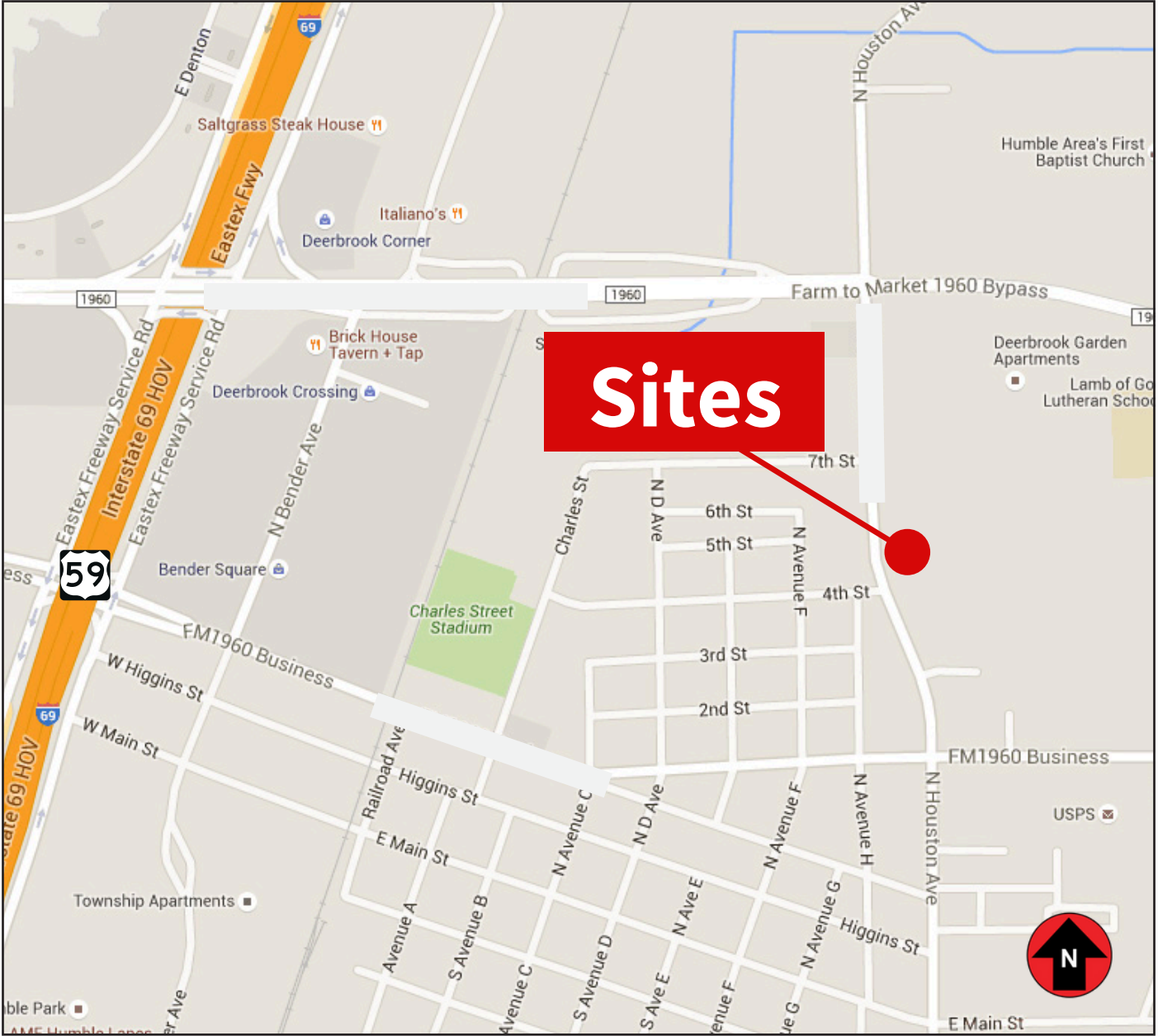
## Building 4

- ±11,145 SF total (67' x 150')
- Overhead Door: Two (2) grade level
- Eave Height: 26'
- Cranes: - One (1) 25-ton  
- Three (3) 2-ton JIBs
- Additional land available for Expansion or Build to Suit
- Pricing: Contact Brokers for Pricing









**Mark Nicholas, SIOR**  
mark.nicholas@jll.com  
+1 713 888 4024

**Will Clay**  
will.clay@jll.com  
+1 713 425 1810

**Angela Watford**  
angela.watford@jll.com  
+1 713 425 1848

**Martin Gutierrez**  
martin.gutierrez@jll.com  
+1 713 212 6500