

# 642 Cordell Drive

**COLLEGE PARK, GA 30349**

**26,846 sq. ft.**  
AVAILABLE

**7 total**  
DOCK DOORS

**2,925 sq. ft.**  
OFFICE AREA

**2 total**  
DRIVE IN DOORS

**18'**  
CLEAR HEIGHT

**124'**  
BUILDING DEPTH

## Features

A 50,611 sq. ft. stand-alone building area situated on a 5.33 AC lot.

Suite Available for occupancy now

Efficient operations with 7 dock-high doors and 2 drive-in doors.

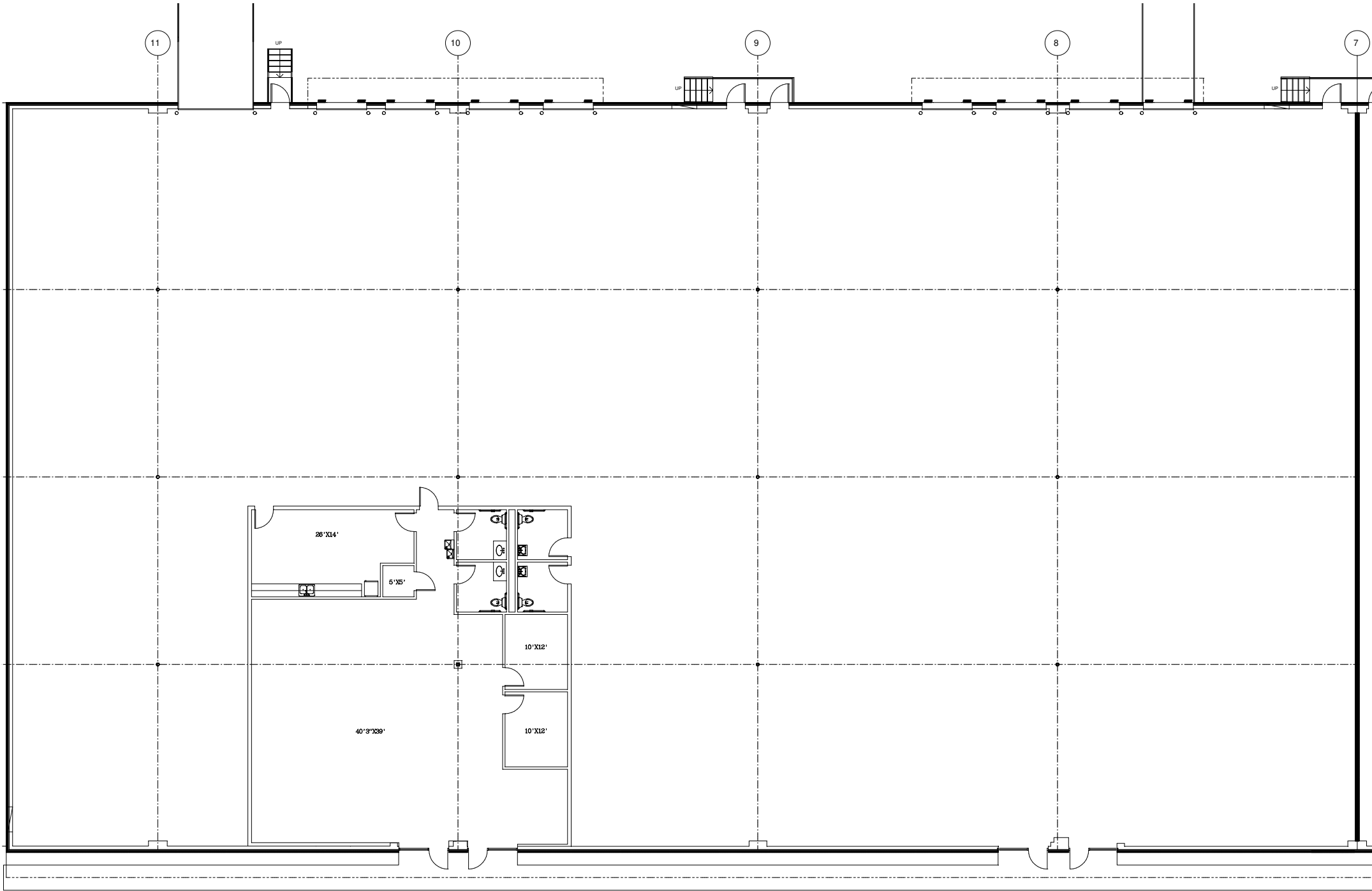
Close access to major interstates such as I-285 & I-75 as well as Hartsfield-Jackson Atlanta International Airport.







# Building Specifications

Building Size	50,611 sq. ft.
Available	26,846 sq. ft.
Office Space	2,925 sq. ft.
Clear Height	18'
Dock High Doors	7
Drive-in Doors	2
Building Depth	124'
Zoning	Light Industrial



 **7**  
Loading  
Positions

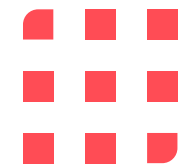
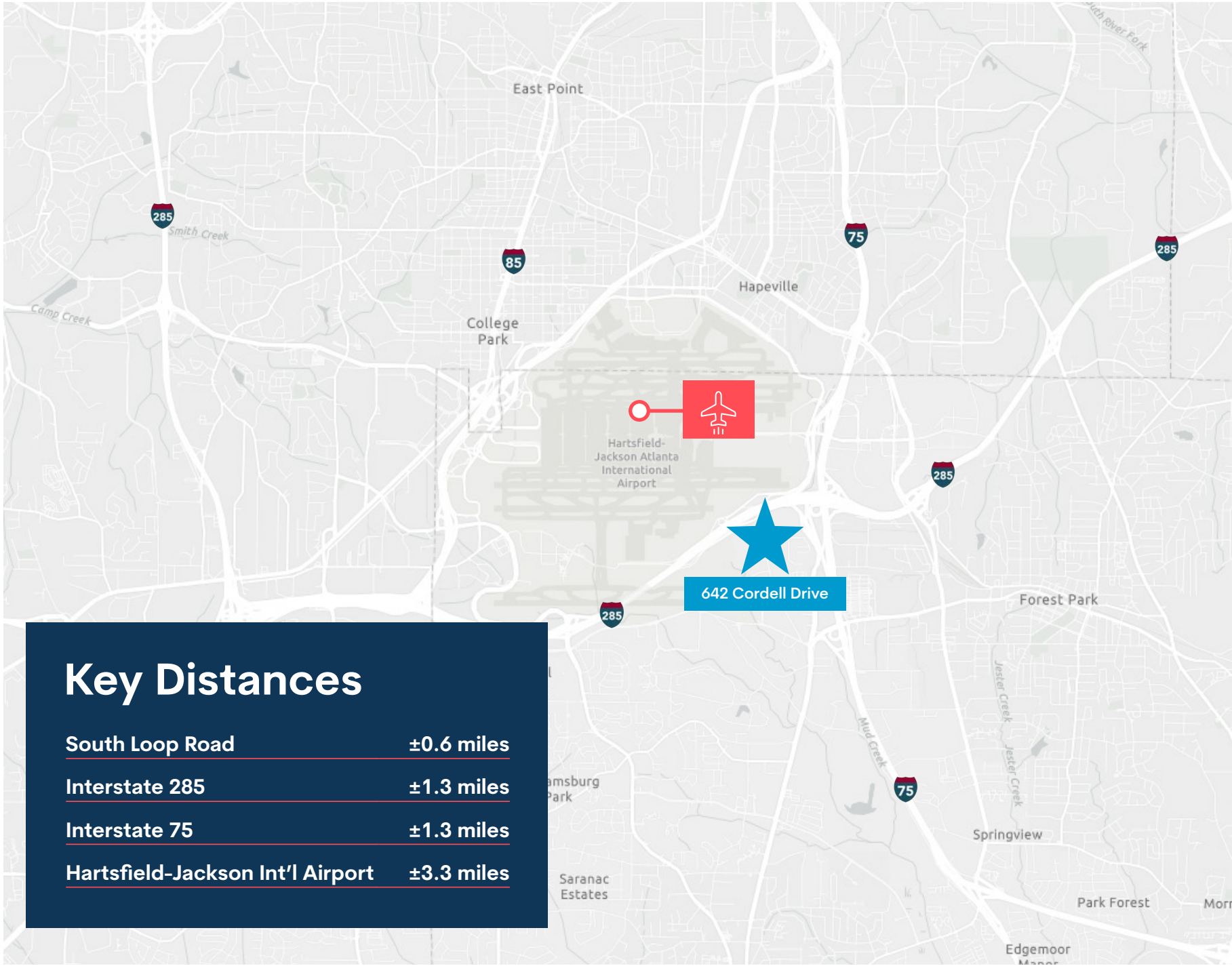
 **18'**  
Min. Clear  
Height

 **2**  
Drive In Doors  
(8' x 10')

 **124'**  
Building  
Depth



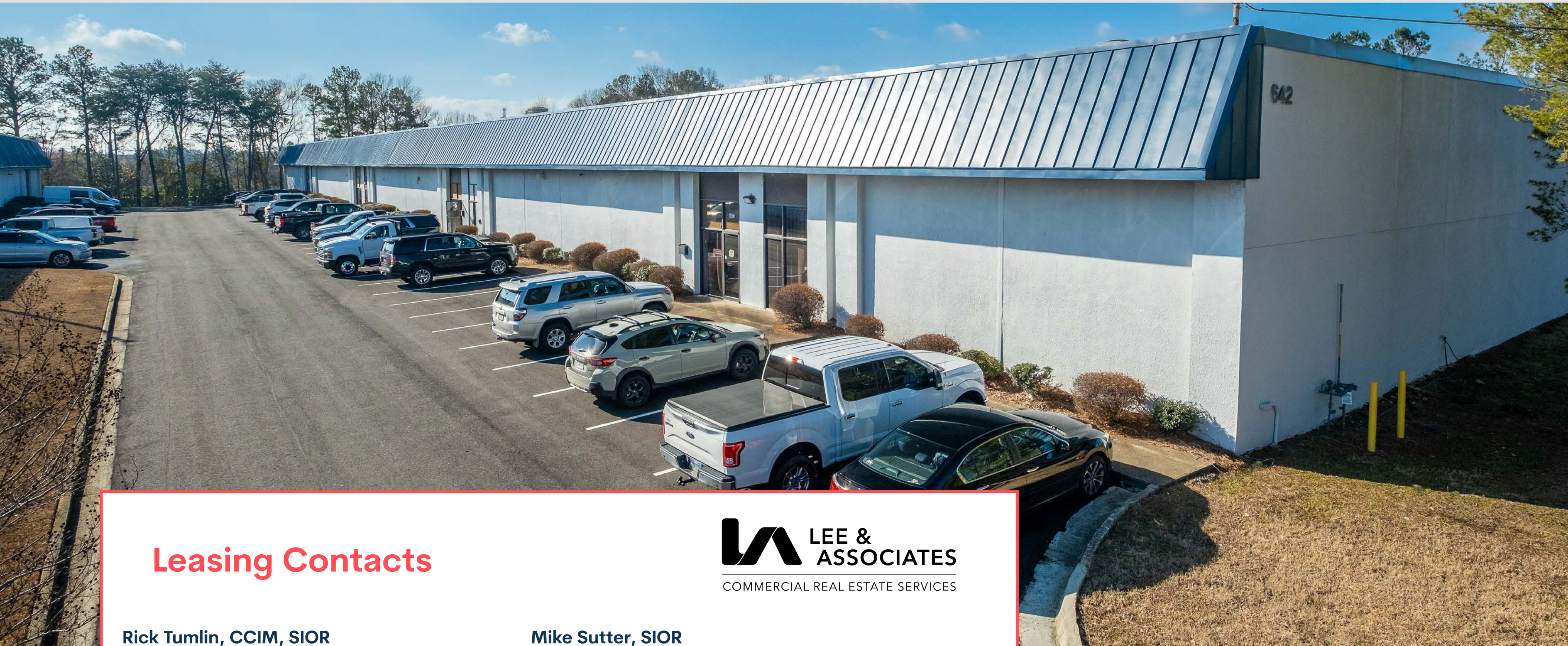






# 642 Cordell Drive

COLLEGE PARK, GA 30349



## Leasing Contacts

**Rick Tumlin, CCIM, SIOR**

404.442.2816

[rtumlin@lee-associates.com](mailto:rtumlin@lee-associates.com)

**Elizabeth Kennedy**

404.781.2106

[ekennedy@lee-associates.com](mailto:ekennedy@lee-associates.com)



**Mike Sutter, SIOR**

404.442.2804

[msutter@lee-associates.com](mailto:msutter@lee-associates.com)

All information furnished regarding property for sale, rental, or financing is from sources deemed reliable, but not warranty or representation is made to the accuracy thereof and same is submitted to errors, omissions, change of price, rental or other conditions prior to sale, lease, or financing or withdrawal without notice. No liability of any kind is to be imposed on the broker herein.

## Brookfield Properties

**Celeste Land**

404.418.4168

[celeste.land@brookfieldproperties.com](mailto:celeste.land@brookfieldproperties.com)

