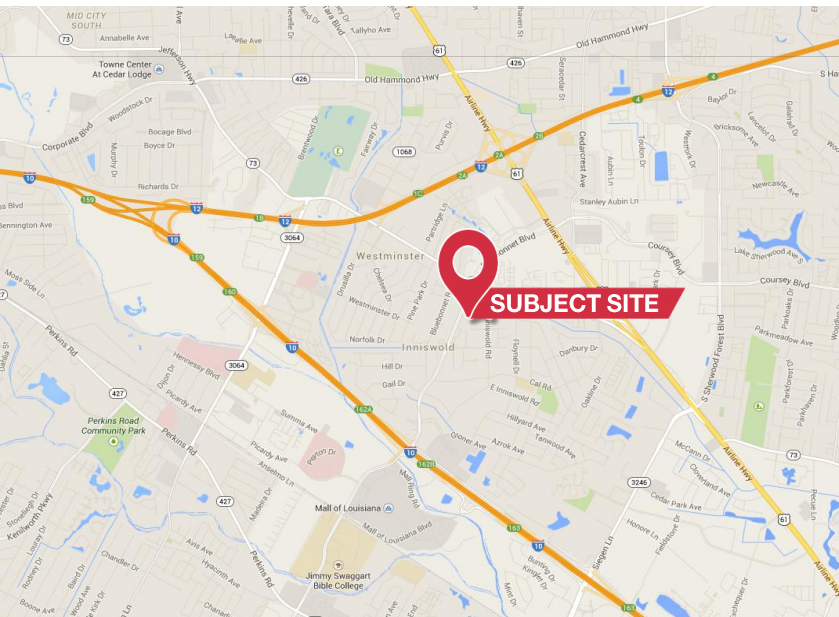


Class A Office Space For Lease-Suite C

NAI Latter & Blum



4451 Bluebonnet Blvd.
Suite C: Baton Rouge, LA
70809

- Class A Office Space For Lease
- Suite C Available: 2,000 SF
- Located on Bluebonnet Blvd. near Jefferson Hwy
- Easy Access to I-10 & I-12
- Five Offices, Conference Room and Two Kitchenettes
- Heavy Floor Plan Modifications are Available for a Term Lease

For Lease: \$20/SF Annual

NAI Latter & Blum

Ty Gose
225.295.0800
ty@latterblum.com

Michael Cashio
225.247.9812
mcashio@latterblum.com

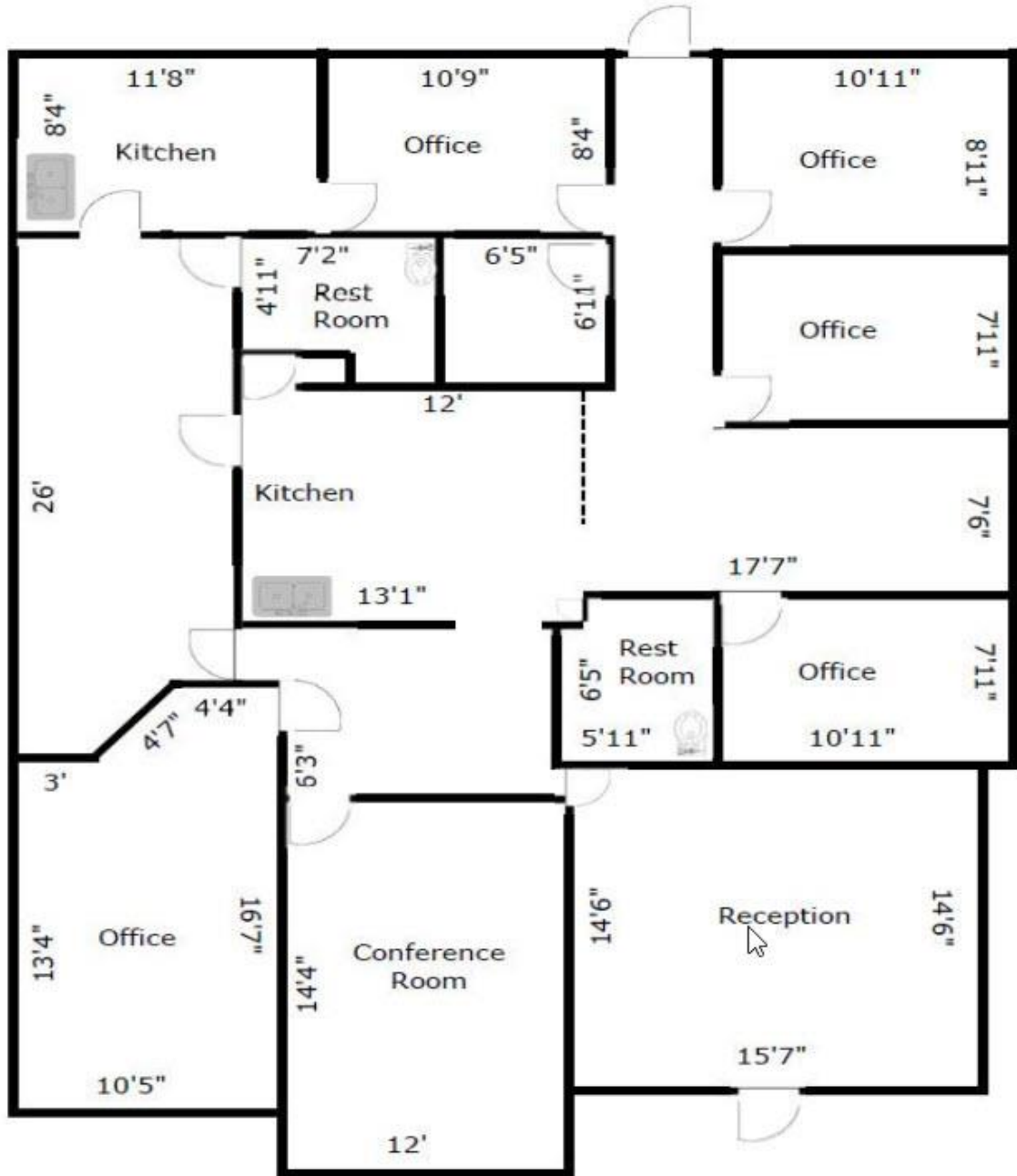
LICENSED IN LOUISIANA. NO WARRANTY OR REPRESENTATION, EXPRESS OR IMPLIED, IS MADE AS TO THE ACCURACY OF THE INFORMATION CONTAINED HEREIN, AND THE SAME IS SUBMITTED SUBJECT TO ERRORS, OMISSIONS, CHANGE OF PRICE, RENTAL OR OTHER CONDITIONS, PRIOR SALE, LEASE OR FINANCING, OR WITHDRAWAL WITHOUT NOTICE, AND OF ANY SPECIAL LISTING CONDITIONS IMPOSED BY OUR PRINCIPALS. NO WARRANTIES OR REPRESENTATIONS ARE MADE AS TO THE CONDITION OF THE PROPERTY OR ANY HAZARDS CONTAINED THEREIN ARE ANY TO BE IMPLIED.

1700 City Farm Drive
Baton Rouge, LA 70806 USA
225.295.0800

www.latterblum.com

Class A Office Space For Lease-Suite C

NAI Letter & Blum



NAI Letter & Blum

Ty Gose
225.295.0800
ty@latterblum.com

Michael Cashio
225.247.9812
mcashio@latterblum.com

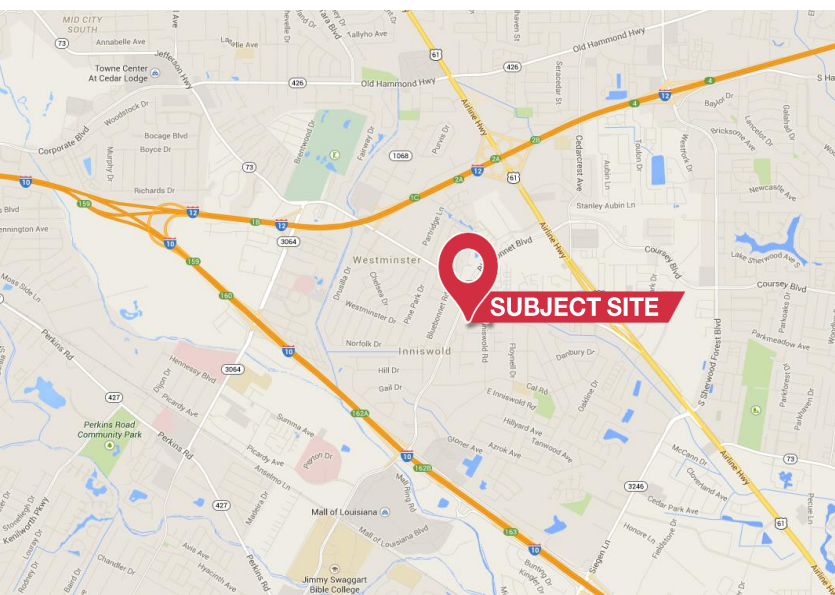
LICENSED IN LOUISIANA. NO WARRANTY OR REPRESENTATION, EXPRESS OR IMPLIED, IS MADE AS TO THE ACCURACY OF THE INFORMATION CONTAINED HEREIN, AND THE SAME IS SUBMITTED SUBJECT TO ERRORS, OMISSIONS, CHANGE OF PRICE, RENTAL OR OTHER CONDITIONS, PRIOR SALE, LEASE OR FINANCING, OR WITHDRAWAL WITHOUT NOTICE, AND OF ANY SPECIAL LISTING CONDITIONS IMPOSED BY OUR PRINCIPALS. NO WARRANTIES OR REPRESENTATIONS ARE MADE AS TO THE CONDITION OF THE PROPERTY OR ANY HAZARDS CONTAINED THEREIN ARE ANY TO BE IMPLIED.

1700 City Farm Drive
Baton Rouge, LA 70806 USA
225.295.0800

www.latterblum.com

Class A Office Space For Lease-Suite E

NAI Letter & Blum



4451 Bluebonnet Blvd.
Suite E: Baton Rouge, LA
70809

- Class A Office Space For Lease
- Suite E Available: 2,000 SF
- Located on Bluebonnet Blvd. near Jefferson Hwy
- Easy Access to I-10 & I-12

For Lease: \$20/SF Annual

NAI Letter & Blum

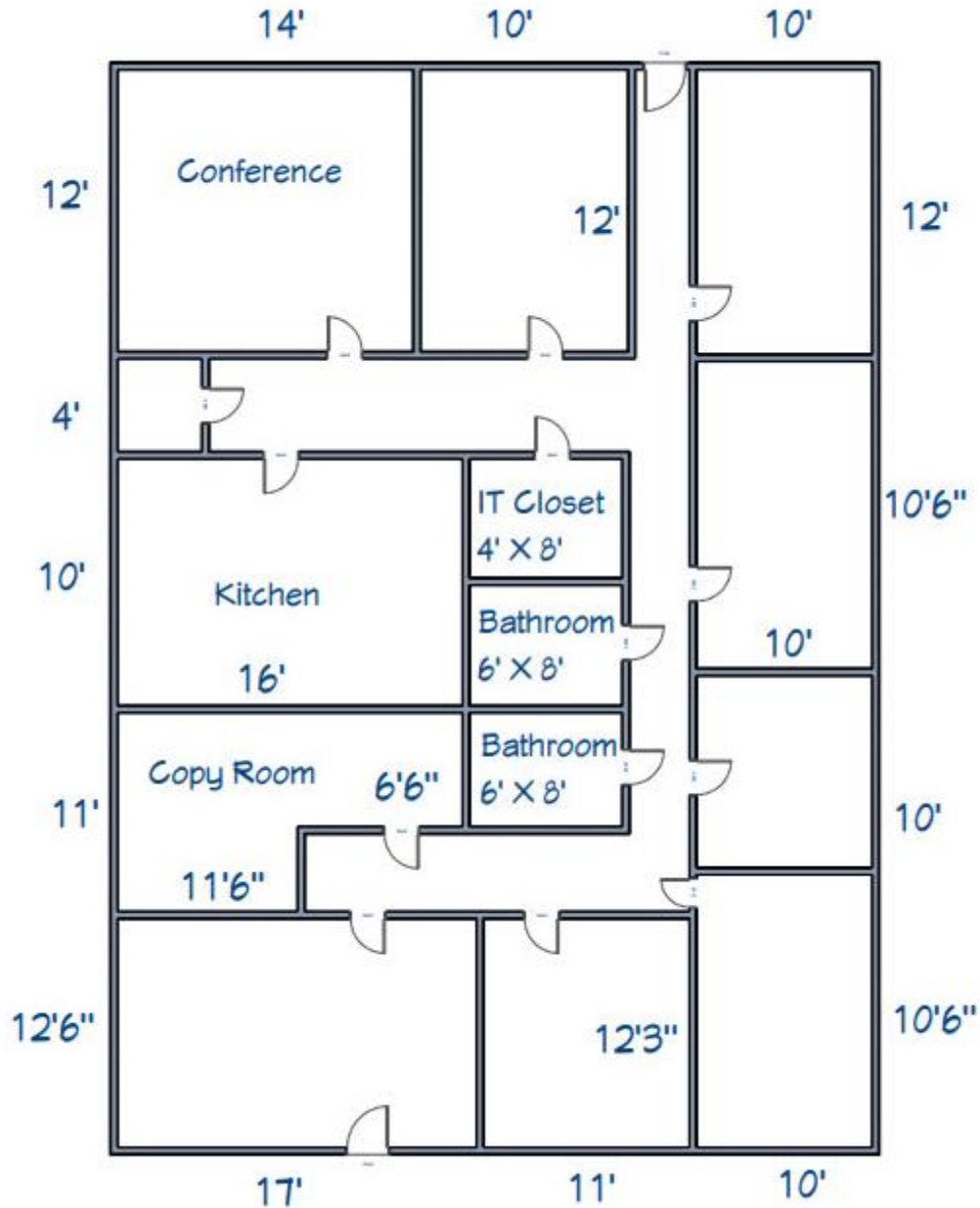
Ty Gose
225.295.0800
ty@latterblum.com

Michael Cashio
225.247.9812
mcashio@latterblum.com

1700 City Farm Drive
Baton Rouge, LA 70806 USA
225.295.0800
www.latterblum.com

LICENSED IN LOUISIANA. NO WARRANTY OR REPRESENTATION, EXPRESS OR IMPLIED, IS MADE AS TO THE ACCURACY OF THE INFORMATION CONTAINED HEREIN, AND THE SAME IS SUBMITTED SUBJECT TO ERRORS, OMISSIONS, CHANGE OF PRICE, RENTAL OR OTHER CONDITIONS, PRIOR SALE, LEASE OR FINANCING, OR WITHDRAWAL WITHOUT NOTICE, AND OF ANY SPECIAL LISTING CONDITIONS IMPOSED BY OUR PRINCIPALS. NO WARRANTIES OR REPRESENTATIONS ARE MADE AS TO THE CONDITION OF THE PROPERTY OR ANY HAZARDS CONTAINED THEREIN ARE ANY TO BE IMPLIED.

Class A Office Space For Lease-Suite E



Ty Gose

225.295.0800
ty@latterblum.com

Michael Cashio

225.247.9812
mcashio@latterblum.com

1700 City Farm Drive
Baton Rouge, LA 70806 USA
225.295.0800

www.latterblum.com

LICENSED IN LOUISIANA. NO WARRANTY OR REPRESENTATION, EXPRESS OR IMPLIED, IS MADE AS TO THE ACCURACY OF THE INFORMATION CONTAINED HEREIN, AND THE SAME IS SUBMITTED SUBJECT TO ERRORS, OMISSIONS, CHANGE OF PRICE, RENTAL OR OTHER CONDITIONS, PRIOR SALE, LEASE OR FINANCING, OR WITHDRAWAL WITHOUT NOTICE, AND OF ANY SPECIAL LISTING CONDITIONS IMPOSED BY OUR PRINCIPALS. NO WARRANTIES OR REPRESENTATIONS ARE MADE AS TO THE CONDITION OF THE PROPERTY OR ANY HAZARDS CONTAINED THEREIN ARE ANY TO BE IMPLIED.

Class A Office Space For Lease-Suites F & G

NAI Latter & Blum



Property Features

- 1,900-3,800 SF
- \$20 PSF
- Class A Space In Desirable Upscale Bluebonnet Office Park

NAI Latter & Blum

Ty Gose

225.295.0800

ty@latterblum.com

Michael Cashio

225.247.9812

mcashio@latterblum.com

1700 City Farm Drive
Baton Rouge, LA 70806 USA

225.295.0800

www.latterblum.com

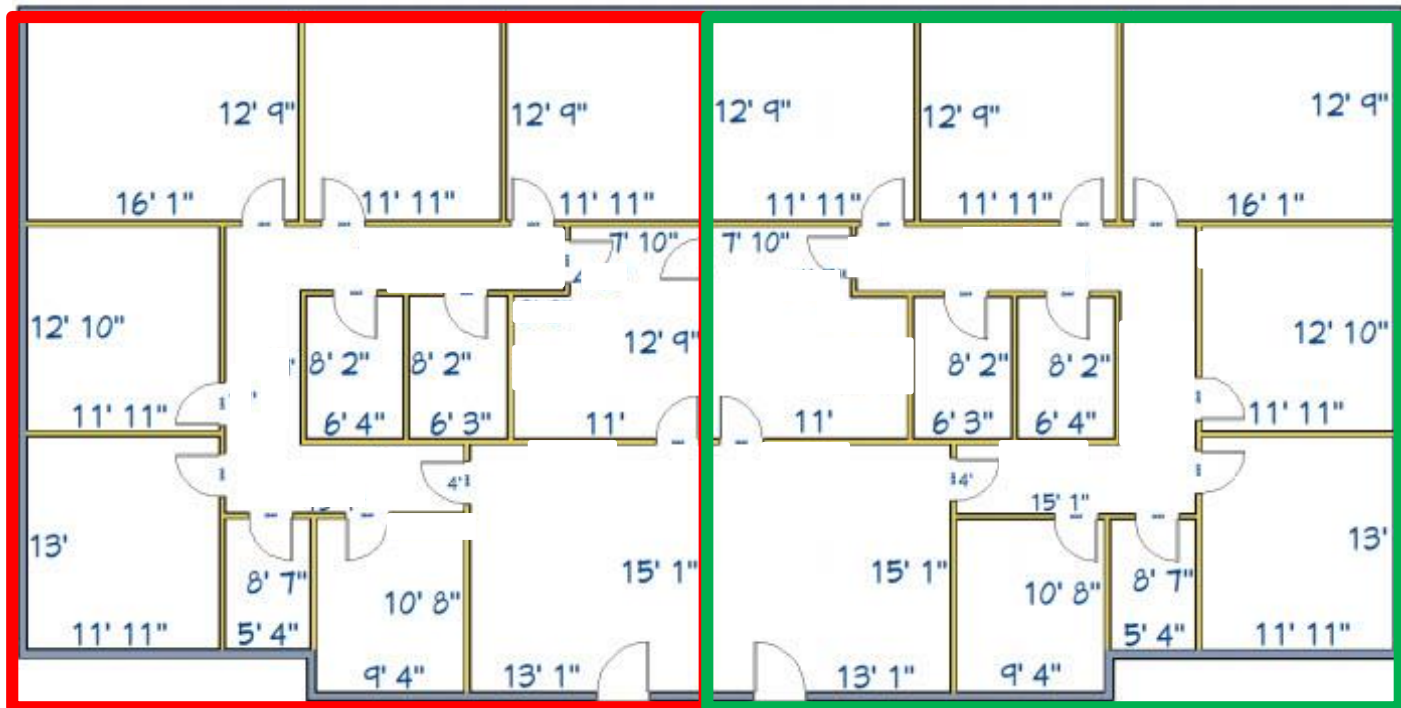
LICENSED IN LOUISIANA. NO WARRANTY OR REPRESENTATION, EXPRESS OR IMPLIED, IS MADE AS TO THE ACCURACY OF THE INFORMATION CONTAINED HEREIN, AND THE SAME IS SUBMITTED SUBJECT TO ERRORS, OMISSIONS, CHANGE OF PRICE, RENTAL OR OTHER CONDITIONS, PRIOR SALE, LEASE OR FINANCING, OR WITHDRAWAL WITHOUT NOTICE, AND OF ANY SPECIAL LISTING CONDITIONS IMPOSED BY OUR PRINCIPALS. NO WARRANTIES OR REPRESENTATIONS ARE MADE AS TO THE CONDITION OF THE PROPERTY OR ANY HAZARDS CONTAINED THEREIN ARE ANY TO BE IMPLIED.

Class A Office Space For Lease-Suites F & G



Suite F

Suite G



Ty Gose

225.295.0800

ty@latterblum.com

Michael Cashio

225.247.9812

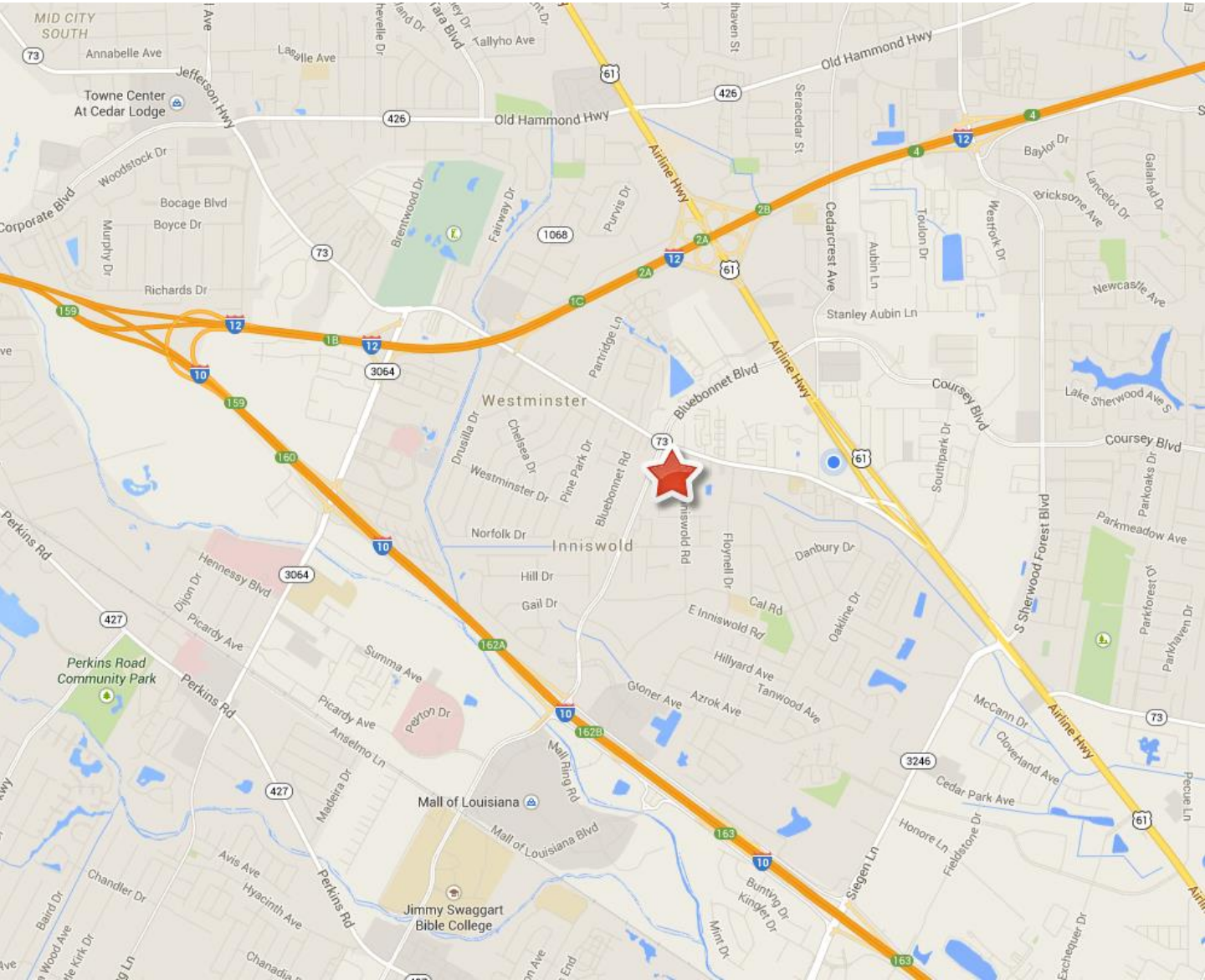
mcashio@latterblum.com

LICENSED IN LOUISIANA. NO WARRANTY OR REPRESENTATION, EXPRESS OR IMPLIED, IS MADE AS TO THE ACCURACY OF THE INFORMATION CONTAINED HEREIN, AND THE SAME IS SUBMITTED SUBJECT TO ERRORS, OMISSIONS, CHANGE OF PRICE, RENTAL OR OTHER CONDITIONS, PRIOR SALE, LEASE OR FINANCING, OR WITHDRAWAL WITHOUT NOTICE, AND OF ANY SPECIAL LISTING CONDITIONS IMPOSED BY OUR PRINCIPALS NO WARRANTIES OR REPRESENTATIONS ARE MADE AS TO THE CONDITION OF THE PROPERTY OR ANY HAZARDS CONTAINED THEREIN ARE ANY TO BE IMPLIED.

1700 City Farm Drive
Baton Rouge, LA 70806 USA
225.295.0800

www.latterblum.com

Class A Office Space For Lease-Suites F & G



Ty Gose

225.295.0800

ty@latterblum.com

Michael Cashio

225.247.9812

mcashio@latterblum.com

LICENSED IN LOUISIANA. NO WARRANTY OR REPRESENTATION, EXPRESS OR IMPLIED, IS MADE AS TO THE ACCURACY OF THE INFORMATION CONTAINED HEREIN, AND THE SAME IS SUBMITTED SUBJECT TO ERRORS, OMISSIONS, CHANGE OF PRICE, RENTAL OR OTHER CONDITIONS, PRIOR SALE, LEASE OR FINANCING, OR WITHDRAWAL WITHOUT NOTICE, AND OF ANY SPECIAL LISTING CONDITIONS IMPOSED BY OUR PRINCIPALS. NO WARRANTIES OR REPRESENTATIONS ARE MADE AS TO THE CONDITION OF THE PROPERTY OR ANY HAZARDS CONTAINED THEREIN ARE ANY TO BE IMPLIED.

1700 City Farm Drive
Baton Rouge, LA 70806 USA
225.295.0800

www.latterblum.com