

# FOR SALE | ±5.49 ACRES

PRICE REDUCED



## M-2

CENTENNIAL PKWY

SHATZ ST



SCAN & SUBSCRIBE!

**LARKIN**  
INDUSTRIAL GROUP

E Centennial Pkwy & N Shatz St | North Las Vegas, NV 89115

**NAIExcel**

COMMERCIAL REAL ESTATE SERVICES, WORLDWIDE

6064 South Durango Drive,  
Las Vegas, NV 89113  
702.383.3383 | [naiexcel.com](http://naiexcel.com)

#### LISTING LEADS

Eric J. Larkin, MBA, CCIM, SIOR

LIC#BS.0073906  
702.279.2479  
[elarkin@naiexcel.com](mailto:elarkin@naiexcel.com)

Leslie Houston, SIOR

LIC#S.01879121  
660.287.2253  
[lhouston@naiexcel.com](mailto:lhouston@naiexcel.com)

Michael Kenny, SIOR

LIC#S.0178188  
702.408.0963  
[mkenney@naiexcel.com](mailto:mkenney@naiexcel.com)

Seth Wright

LIC#S.0202229  
949.531.8369  
[swright@naiexcel.com](mailto:swright@naiexcel.com)



6064 South Durango Drive,  
Las Vegas, NV 89113  
702.383.3383 | [naiexcel.com](http://naiexcel.com)

E Centennial Pkwy  
& N Shatz St  
North Las Vegas, NV 89115

# Offering Memorandum

## Terms and Conditions

This offering, including any related digital marketing, contains selected information pertaining to the Property and does not purport to be a representation of the state of the Property, to be all-inclusive, or to contain all or part of the information which interested parties may require to evaluate a purchase or lease of real property.

## Financial Information

Any and all financial projections and information are provided for general reference purposes only and have been gathered from sources deemed reliable. Certain assumptions have been made relating to the general economy, market conditions, competition and other factors beyond the control of seller and NAI Excel. Therefore, all projections, assumptions and other information provided and made herein are subject to material variation.

## Summary Documents

Additionally, all references to acreage, square feet, and other measurements are approximations. Any demographics, geographic information systems(GIS), maps, photography, zoning, site plan, survey, engineering, architectural drawings, and any other information are without assurance of their accuracy, time sensitivity, completeness, or status of approval. Documents presented may be preliminary, have no assurance of being "as built", and may not reflect actual property boundaries or improvements. Additional information and an opportunity to inspect the Property can be made available to qualified parties. In this Memorandum, certain documents are described in summary form. These summaries do not purport to be complete nor necessarily accurate descriptions of the full documents referenced herein. Interested parties are expected to review and confirm all such summaries and other documents of whatever nature independently and not rely on the contents of this Memorandum in any manner.

## Non-Warranty

Neither the seller or NAI Excel, nor any of their respective directors, officers, Affiliates or representatives make any representation or warranty, expressed or implied, as to the accuracy or completeness of this Offering Memorandum or any of its contents, as to the financial performance of the property, or as to the condition of the Property, malfunctions or mechanical defects on the Property or to any improvements thereon, including but not limited to the material, workmanship or mechanical components of the structures, foundations, roof, heating, plumbing, electrical or sewage system, drainage or moisture conditions, air conditioning, or damage by the presence of pests, mold or other organisms, environmental condition, soils conditions, the zoning of the Property, the suitability of the Property for Interested parties intended use or purpose, or for any other use or purpose.

## No Obligation

No legal commitment or obligation shall arise by reason of your receipt of this Memorandum or use of its contents; Interested Parties are to rely solely on its investigations and inspections of the Property in evaluating a possible purchase or lease of the real property. The seller expressly reserves the right, at its sole discretion, to reject any or all offers to purchase or lease the Property, and/or to terminate discussions with any entity at any time, with or without notice, which may arise as a result of review of this Memorandum.

## Confidentiality

By receipt of this Memorandum, you agree that this Memorandum and its contents are confidential in nature, that you will hold and treat such in the strictest confidence and that you will not disclose this Memorandum, or any of its contents, to any other entity without the prior written authorization of the seller or NAI Excel. If after reviewing this Memorandum, you have no further interest in purchasing or leasing the Property, please delete or return this Memorandum to NAI Excel.



# Property Summary

LIST PRICE	<b>\$6,250,000</b>
APN	<b>123-22-801-018</b>
LOT SIZE	<b>±5.49 AC</b>
ZONING	<b>M-2</b>
JURISDICTION	<b>North Las Vegas</b>

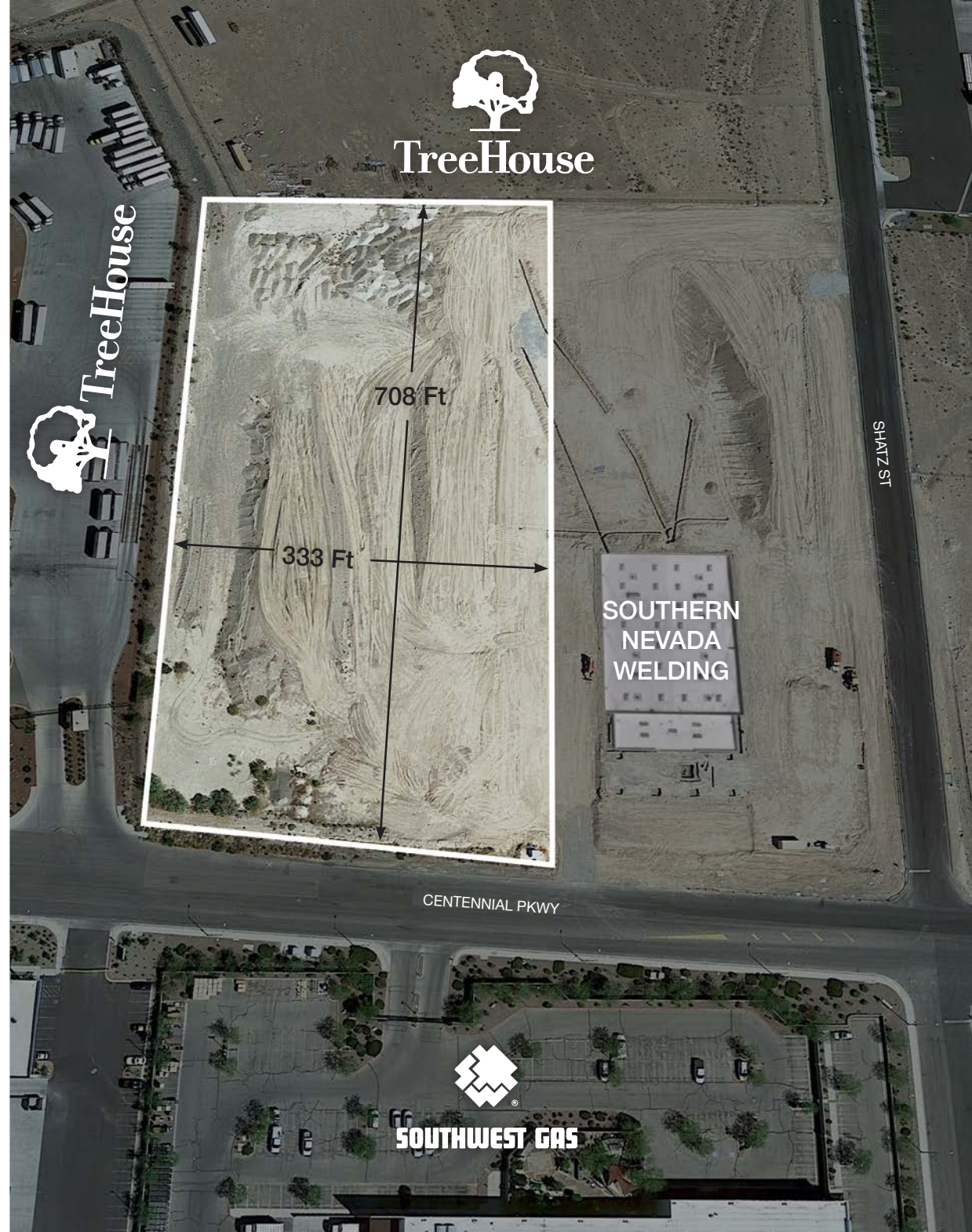
- Ready for Development!
- Utilities near the site
- 341' of frontage on E. Centennial Pkwy
- Highly sought-after Speedway Submarket
- Less than 1 mile from the I-15 freeway
- Less than 2 miles from the 215 Beltway
- Twenty minutes to the Las Vegas Strip



OR TEXT 21476 TO 39200

Message frequency will vary. Message and data rates may apply. Reply HELP for help or STOP to cancel.

[ARTI Terms of Service](#) | [ARTI Privacy Statement](#)





# Area Map







# Las Vegas

## TRANSIT ANALYSIS

Los Angeles, CA	265 miles
Phoenix, AZ	300 miles
San Diego, CA	327 miles
Salt Lake City, UT	424 miles
Reno, NV	452 miles
San Francisco, CA	562 miles
Sacramento, CA	565 miles
Boise, ID	634 miles
Santa Fe, NM	634 miles
Denver, CO	752 miles
Cheyenne, WY	837 miles
Helena, MT	907 miles
Portland, OR	982 miles
Seattle, WA	1,129 miles





## LOCATION & TRANSPORTATION



- I-15 Interchange is 3 miles from site
- US-95 Interchange is 3.8 miles from site



- McCarran Airport is 7.6 miles from site



- The Las Vegas Strip is 4.7 miles from site

## SHIPPING & MAILING SERVICES



- FedEx Freight: 6.9 Miles
- FedEx Ship Center: 1.4 Miles
- FedEx Air Cargo: 10.1 Miles
- FedEx Ground: 2.5 Miles
- UPS Freight Service Center: 6.2 Miles
- UPS Customer Center: 7.7 Miles
- UPS Air Cargo: 10.1 Miles
- US Post Office: 3.5 Miles

## BUSINESS ASSISTANCE PROGRAMS



- Sales and Use Tax Abatement
- Modified Business Tax Abatement
- Personal Property Tax Abatement
- Real Property Tax Abatement for Recycling
- TRAIN Employees Now (TEN)
- Silver State Works Employee Hiring Incentive

## BUSINESS IN NEVADA

- ✗ Corporate Income Tax
- ✗ Admission Tax
- ✗ Personal Income Tax
- ✗ Unitary Tax
- ✗ Franchise Tax on Income
- ✗ Inventory Tax





## Distance to Major Cities

Salt Lake City, Utah	424 miles
Reno, Nevada	452 miles
Los Angeles, California	265 miles
San Diego, California	327 miles
Denver, Colorado	752 miles
Phoenix, Arizona	300 miles

## Market Research

Our offices publish commercial and residential market research across Utah and Nevada. NAI Excel is known for their deep and rich data. Lending institutions, appraisers, and business consultants look to our market reports as the authority on commercial real estate market trends. We have built and maintained a comprehensive database comprised of data collected from some of the largest appraisal firms in the region, NAI transaction, and other data. NAI publishes statistics for the office, retail, industrial, and multifamily markets. Additionally, single family housing reports are published for every major market from Las Vegas to Salt Lake City, through our affiliate.

[ARTI Terms of Service](#) | [ARTI Privacy Statement](#)

<https://brokerstechnology.com/terms-of-use/>

<https://brokerstechnology.com/privacy-policy/>

CLICK HERE



VIEW MARKET STATISTICS  
FOR OFFICE, RETAIL,  
INDUSTRIAL & MULTIFAMILY

<https://excelcres.com/market-research>



COMMERCIAL REAL ESTATE SERVICES, WORLDWIDE

6064 South Durango Drive,  
Las Vegas, NV 89113  
702.383.3383 | [naiexcel.com](http://naiexcel.com)

### LISTING LEADS

Eric J. Larkin, MBA, CCIM, SIOR

LIC#BS.0073906  
702.279.2479  
[elarkin@naiexcel.com](mailto:elarkin@naiexcel.com)

Leslie Houston, SIOR

LIC#S.01879121  
660.287.2253  
[lhouston@naiexcel.com](mailto:lhouston@naiexcel.com)

Michael Kenny, SIOR

LIC#S.0178188  
702.408.0963  
[mkenney@naiexcel.com](mailto:mkenney@naiexcel.com)

Seth Wright

LIC#S.0202229  
949.531.8369  
[swright@naiexcel.com](mailto:swright@naiexcel.com)