

Retail/Office Space For Lease

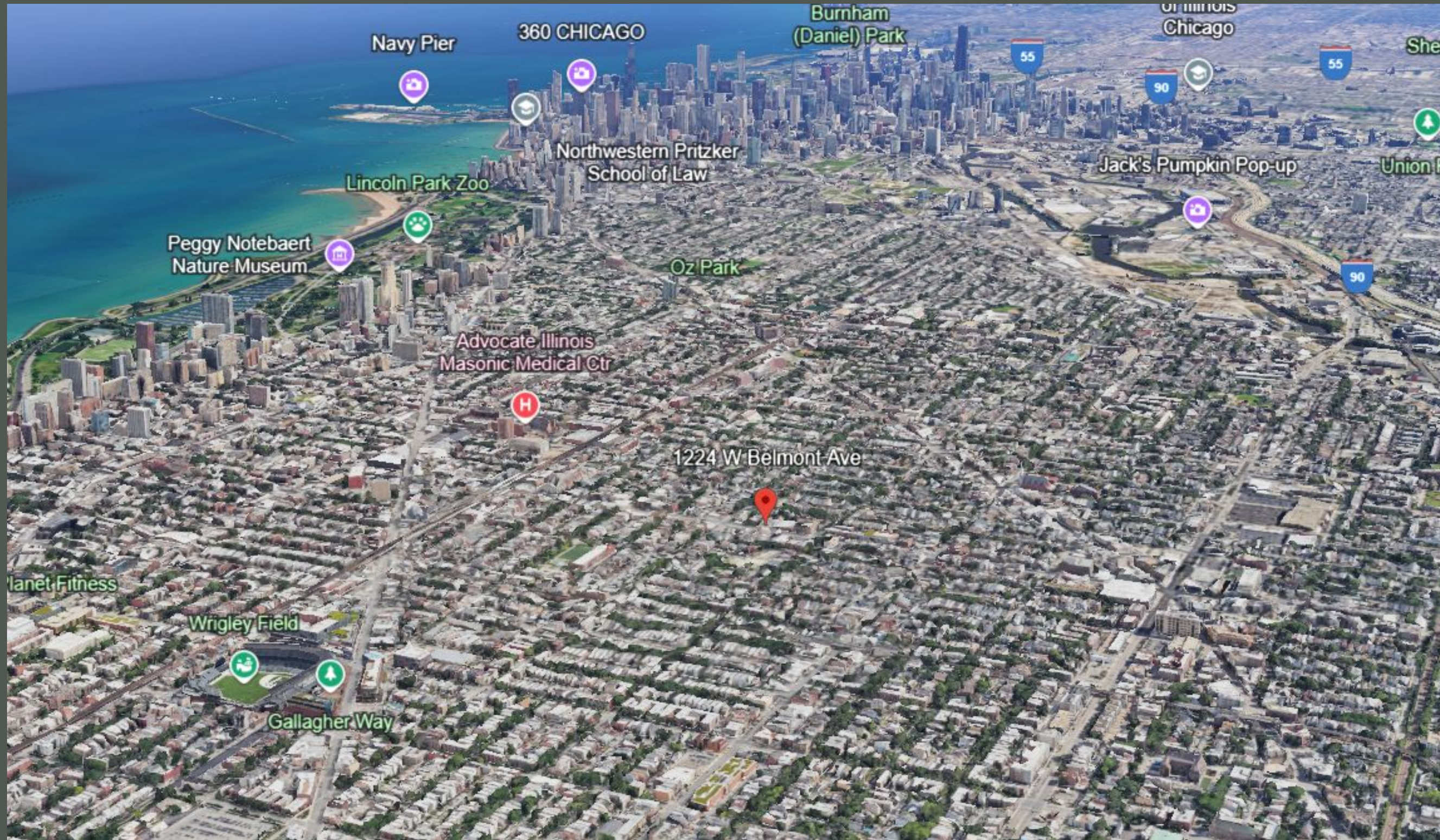
847.409.4900

coordinate
properties

1224 W Belmont Ave. Chicago, IL



info@coordinateproperties.com

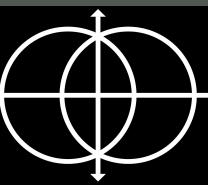


- B3-2 Zoning
- 3,500 Sq Ft
- Desirable Lakeview neighborhood on Chicago's north side
- Close proximity to the Belmont CTA station (Brown, Red, Purple Lines)
- Near popular Southport corridor

847.409.4900

1224 W Belmont Ave, Chicago, IL

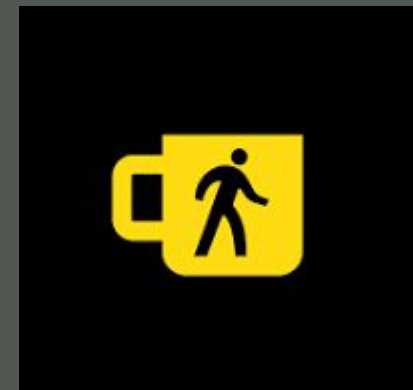
info@coordinateproperties.com



Notable Neighbors



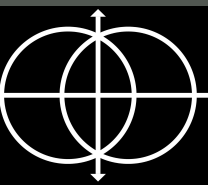
SEPHORA



847.409.4900

1224 W Belmont Ave, Chicago, IL

info@coordinateproperties.com



01.

Exterior

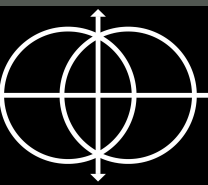
- Branding opportunity via large overhead sign
- High visibility from Belmont Ave.
- Rear alleyway and private entrance
- Opportunity to add multiple surface parking spots



847.409.4900

1224 W Belmont Ave, Chicago, IL

info@coordinateproperties.com



02.

Front Space

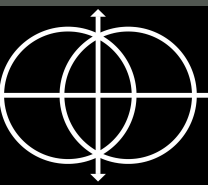
- Large, open layout
- Well lit with bright front windows
- Reception/waiting area



847.409.4900

1224 W Belmont Ave, Chicago, IL

info@coordinateproperties.com



03.

Additional Office Space

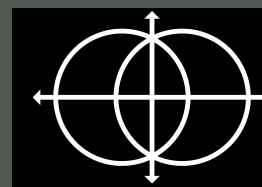
- Partitioned offices on first floor
- Additional office space in mezzanine area and basement



847.409.4900

1224 W Belmont Ave, Chicago, IL

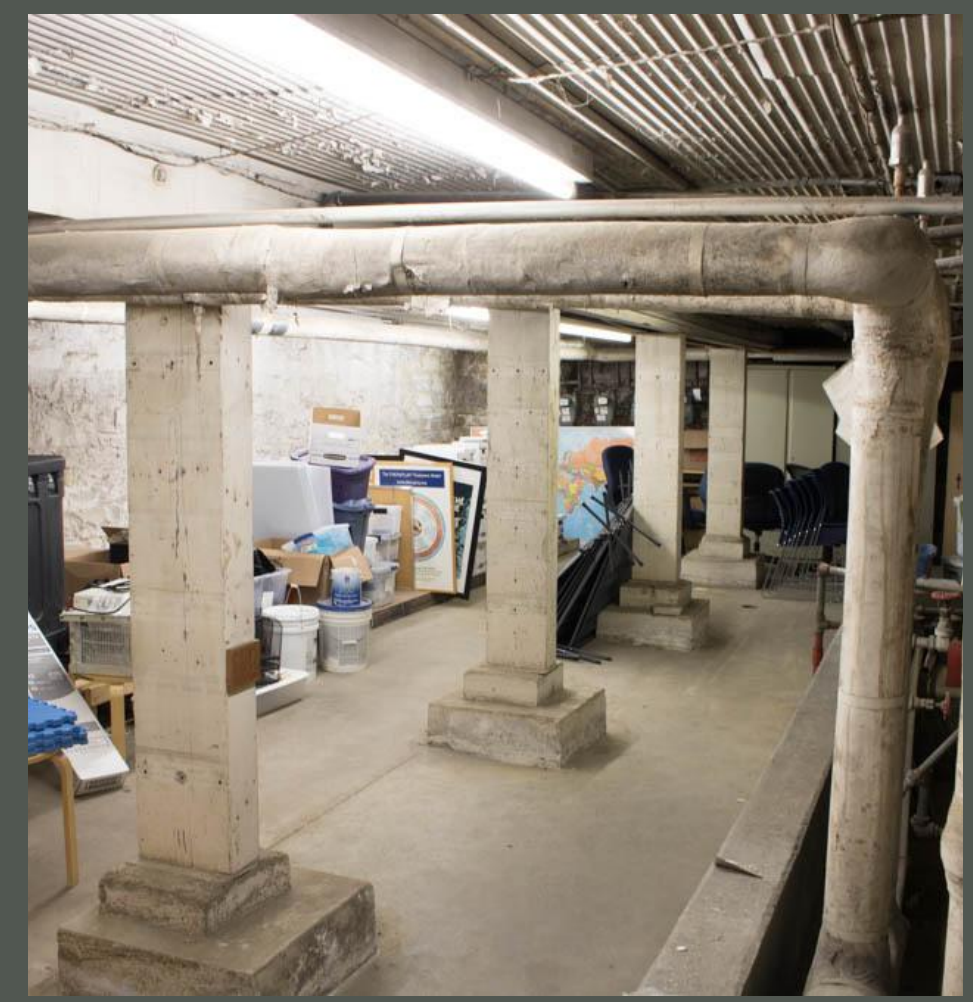
info@coordinateproperties.com



04.

Basement

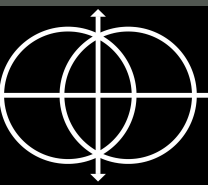
- Multiple finished office spaces
- Rear storage space
- Walk-in safe



847.409.4900

1224 W Belmont Ave, Chicago, IL

info@coordinateproperties.com



05.

Kitchenette and Laundry

- Laundry room with included washer and dryer as well as additional storage space
- Kitchenette

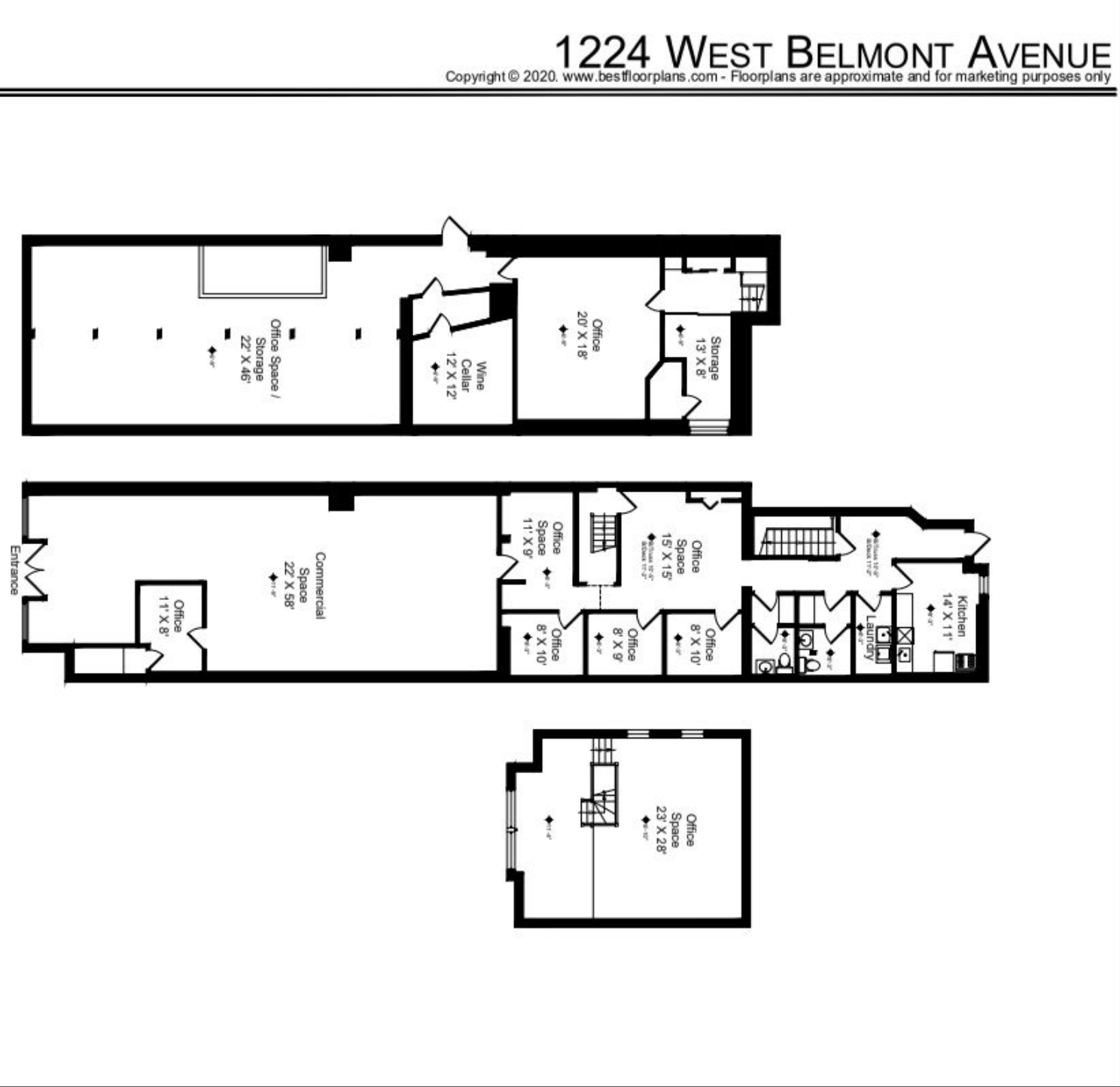


847.409.4900

1224 W Belmont Ave, Chicago, IL

info@coordinateproperties.com

Floor Plan



847.409.4900

1224 W Belmont Ave, Chicago, IL

info@coordinateproperties.com

Coordinate Properties

“GET ON THE GRID”



Who we are?

We are a woman-owned, commercial real estate brokerage based in Chicago holding a deep understanding of trends within the local market, embracing growth at every step.



What we do?

Uphold a dedication to client service and market expertise for all real estate needs.



Amanda Stamelos
Managing Broker
amanda@coordinateproperties.com

847.409.4900

1224 W Belmont Ave, Chicago, IL

info@coordinateproperties.com
