



FEATURES

CUSTOM DESIGN-BUILD INDUSTRIAL LOFT:

- Designed for entertaining, relaxing and enjoying life
- Ideal location for commuting to Seattle/Eastside - minutes from freeways, light rail and SeaTac Airport
- Fiber Internet, GigE Network, Ready for solar and EV charging

SEATTLE AREA WITHOUT SEATTLE'S BAGGAGE:

- Close to all the Seattle area HQs and offices of Amazon, Starbucks, Expedia, Boeing, Microsoft, Apple, Google, Facebook
- One-of-a-kind floor plan and design with custom metal, stone and woodwork from local artists and craftsmen
- Walking distance to parks, trails, river, cafes, market, and community center

THE TEAM:

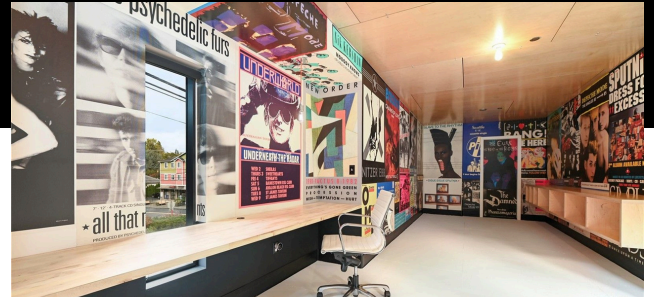
- Design and interiors by renowned Seattle firm: Dixie Stark Interiors
- Construction by high-end Sammamish builder: Saad Custom Homes

THE SPACE:

- Industrial loft designed by top Seattle interior designer
- Primary bedroom with gas fireplace, full en-suite bath and walk-in dressing room
- Guest loft with private bath and Murphy bed
- Unique loft great room / music room
- Loft with private deck and rooftop access
- Main floor guest bedroom or home office
- Main floor powder room

THE LOCATION:

- Strategically located just outside Seattle city limits to avoid Seattle taxes, policies and politicians
- 0.5 miles from I-5, I-405, Highway 99 and SR 599
- 2 miles from light rail station
- 3.5 miles from SeaTac International Airport
- 5 miles from Seattle Design Center, Georgetown, I-90 access
- 9 miles from Seattle Mariners, Seahawks, SoDo Neighborhood
- 12 miles from Amazon HQ and South Lake Union



THE STATS:

- 2,638 square feet of living space
- 18' ceilings
- 7,000+ square foot lot
- Whole house Instant-hot H₂O
- Central Air and A/C
- Gas furnace, oven, stove and fireplace
- Gas grill hook-up on back patio and rooftop
- Pre-wired for solar and EV charging

SHOWER THRONE:

- Custom designed and installed basalt shower-bench created by renowned Seattle artist John Hoge
- John's work has been predominately featured at Seattle area park and neighborhood gathering sites as well as private corporate installations including the Seattle Center and Space Needle

STAIRWAY TO HEAVEN:

- Custom metal work by local artist Jeff Fotheringill of First Pick fame
- Repurposed stair treads from Boeing shipping crates made from Asian hardwoods

DELUXE BIRCH APPLEPLY:

- Local architect firm and Harvard Design School graduate, Zander Watchman designed and fabricated the kitchen island and loft floating bookcase/record rack
- The pieces complement the custom ApplePly ceiling design of the loft

ADDITIONAL FEATURES:

- Drought-tolerant landscaping
- Unique vintage billboards and record store promotional posters installed as one-of-a-kind wallpaper
- Integrated drapery rod for 18' ceilings
- Automated Lutron blinds for additional privacy and comfort