

***NOW UNDER CONSTRUCTION!***

---

# ***TOWER BROADWAY***

---

1600 Broadway | Luxury Living + Iconic Retail  
For Lease on Sacramento's Broadway Corridor



**TURTON**  
COMMERCIAL REAL ESTATE

# TOWER BROADWAY



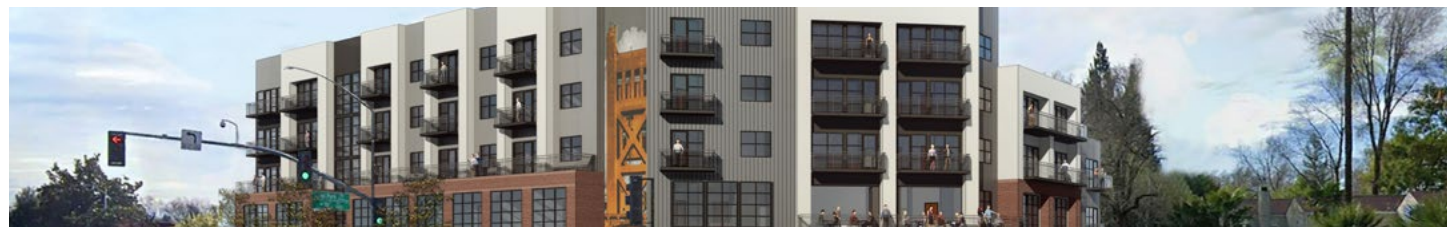
2131 CAPITOL, STE 100  
SACRAMENTO, CA 95816

916.573.3300 | [TURTONCOM.COM](http://TURTONCOM.COM)

**SCOTT KINGSTON**  
SENIOR VICE PRESIDENT - LIC. 01485640  
916.573.3309  
[SCOTTKINGSTON@TURTONCOM.COM](mailto:SCOTTKINGSTON@TURTONCOM.COM)

**JACK SCURFIELD**  
DIRECTOR - LIC. 02127988  
916.573.3316  
[JACKSCURFIELD@TURTONCOM.COM](mailto:JACKSCURFIELD@TURTONCOM.COM)

© 2024 The information contained in the Offering memorandum is confidential and is not to be used for any other purpose or made available to other persons without the express written consent of Turton Commercial Real Estate ("TCRE"), Ken Turton or the owner. The material contained herein is based upon information supplied by owner in coordination with information provided by TCRE from sources it deems reasonably reliable. Summaries of documents are not intended to be comprehensive or all-inclusive but rather a general outline of the provisions contained herein and subject to more diligent investigation on the part of the prospective purchaser. No warranty, expressed or implied, is made by owner, TCRE or any other respective affiliates, as to the accuracy or completeness of the information contained herein or any other written or oral communication provided to a prospective purchaser in the course of its evaluation of the Property. No legal liability is assumed or to be applied in connection with the information or such other communication. Without limiting the general nature of the foregoing, the information shall not be deemed a representation of the state of affairs of the Property or constitute an indication that there has been no change in the business affairs, specific finances or specific condition of the Property since the date of preparation of the information. Prospective purchaser shall make their own projections and conclusions without reliance upon the materials contained herein and conduct their own independent due diligence, inspection and review of the Property, including but not limited to engineering and environmental inspections, to determine the condition of the Property and the existence of any potential hazardous material located at the site.



# THE OPPORTUNITY

60,152	8,772	68	5	Q1-Q2 2026
SF BUILDING	TOTAL RETAIL	RESIDENTIAL UNITS	STORIES	PROJECT DELIVERY DATE

Tower Broadway, located at 1600 Broadway, the iconic former home to Tower Records, will continue to change the landscape of the Broadway corridor in urban Sacramento. Construction of Tower Broadway is commencing April, 2024. Prominently rising on the iconic and historic corner of 16th and Broadway, the architecturally stunning project is a 5-story, 60,152 square foot mixed-use building that will provide 68 residential apartments and highly visible class A retail and restaurant space.

Arriving in Q1-Q2 of 2026, Tower Broadway's retail space will range from 588 square feet to 4,052 square feet, visible to both Broadway and 16th Street. **The two restaurant spaces each have a fully conditioned indoor patio to provide year-round outside seating.**

This exciting Property is located directly across from the iconic Tower Theater in the heart of Broadway and the northside of Land Park. 16th Street and Broadway is a crucial connection between the Broadway corridor, Land Park, Downtown and Midtown Sacramento. This Project will be one of the catalyst projects to help create a reimagined urban lifestyle along the Broadway corridor.

Broadway, the home to Tower Broadway, is an avenue of industrial warehouses and historic buildings that have been transformed into a combination of new mixed-use development, a multicultural culinary scene, a thriving farmers market, a variety of entertainment uses and a significant influx of infrastructure improvements including sidewalks, dedicated pedestrian and bicycle lanes, wider sidewalks

and improved streetside landscaping. Part of the excitement behind Broadway's emergence as a vibrant and distinctive district rests in the area's unique buildings, landmarks, and street elements that still reflect the former Sacramento business activity that existed for over a century. Now, instead of warehouses and industrial shops, Broadway new and historic structures are now home to great emerging options for dining, cocktails, entertainment and art.

Walkable to Sacramento's most notable amenities, retailers at Tower Broadway will benefit greatly from hundreds of new and existing residents, thousands of daytime office employees and nighttime entertainment. Be part of the newest development transforming Sacramento's urban core!



# SIGNAGE DETAILS

A:

**NOTE:**  
All sign content, design and color scheme are subject to written approval from landlord. Tenants must submit color renderings with complete construction details and material specifications to landlord prior to securing permits from City for approval. Any sign manufactured and installed without landlord approval is subject to removal at tenants' expense.

## TENANT SIGN

Face Illuminated Pan Channel Letters | Flush Mounted to Canopy Structure

## LOGO Tenant Sign

Face Illuminated Pan Channel Letters & Logo | Logo Flush Mounted to Canopy Structure with Letters on Stand-Off Brackets

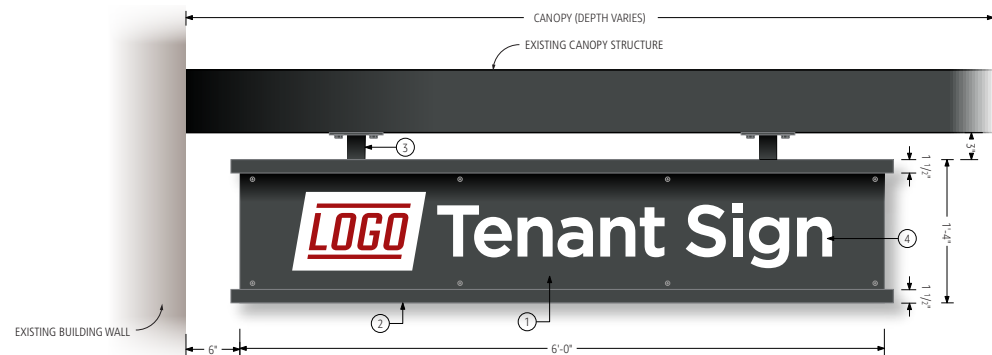
## TENANT SIGN SECONDARY COPY

Face Illuminated Pan Channel Letters & Logo | Letters Flush Mounted to Canopy Structure with Secondary Capsule Cabinet on Stand-Off Brackets

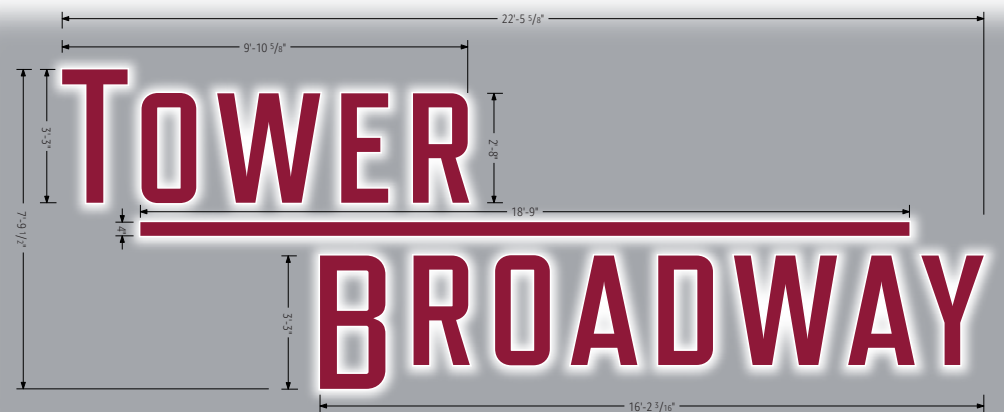
## LOGO Tenant Sign

Halo Illuminated Pan Channel Letters & Logo | Letters & Logo Pegged Off of F.C.O Aluminum Offset Outline Backer Panel on Stand-Off Brackets

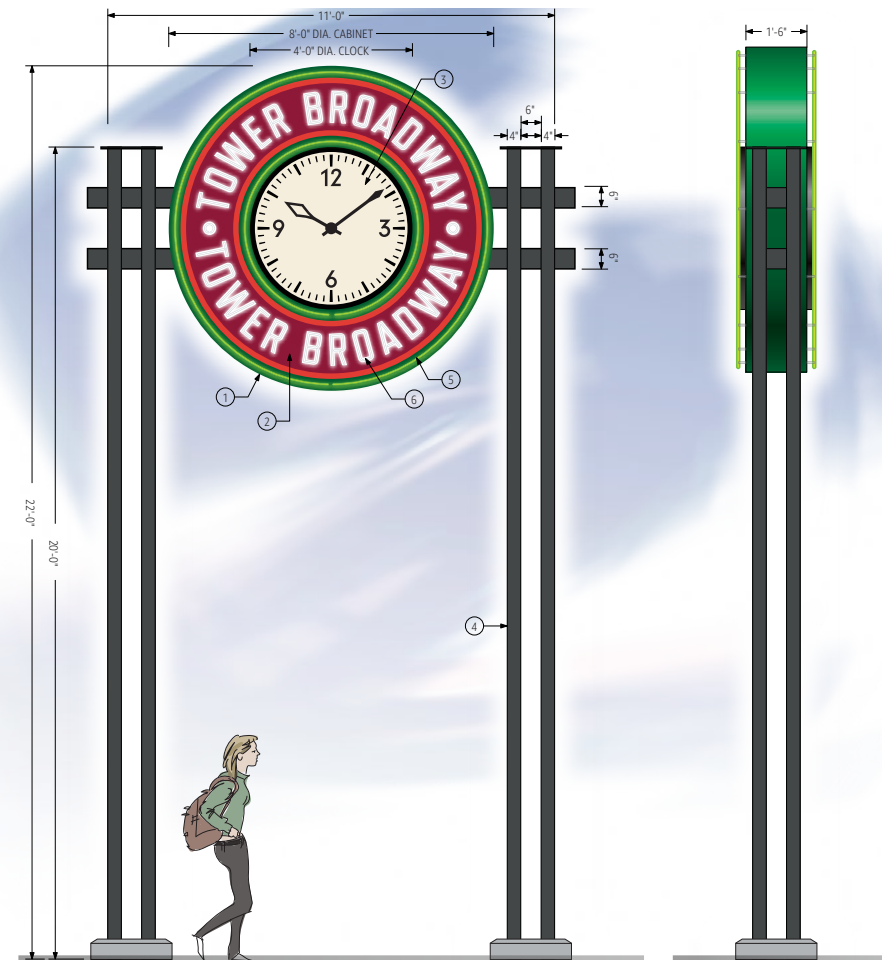
B:



C:



D:



# PROPERTY DETAILS

**Address:** 1600 Broadway, Sacramento, CA 95818

**Building Size:** 60,152 square feet

68 residential units

**Retail Spaces:** 8,772 SF Total Retail

**Space A:** 3,617 SF, fully enclosed & conditioned 586 SF indoor courtyard

**Space B:** 2,072 SF, fully enclosed & conditioned 309 SF indoor courtyard

**Space C:** 1,117 SF

**Space D:** 1,378 SF

**Space E:** 588 SF

**Outdoor Patio Spaces (in addition to indoor courtyard):**

**Outdoor Patio 1:** 1,455 SF

**Outdoor Patio 2:** 854 SF

**Outdoor Patio 3:** 713 SF

**Hoodshaft:** Available (Spaces A and B)

**Parking:** 15 on-site

28 gated stalls for residents

**Greasetrap:** Available (Space A)

**Gas:** Available

**Metering:** Separately Metered

**Delivery Date:** Q1-Q2, 2026

**Retail Lease Rates:**

**Spaces A, B, C & D:** \$4.00 per square foot NNN

**Space E:** \$5.00 per square foot NNN

**Zoning:** C-2-SPD

**Stories:** Five (5)

**Bike Storage:** Bike parking provided

**Water:** City of Sacramento

**Gas:** PG&E

**Electricity:** SMUD

**Additional Feature:** Concrete podium for industrial ± 14' clear heights

**Additional Notes:** New Complete Streets parking coming online for Broadway & additional parking available just south and also under freeway for patrons & employees.

Section One: The Property

TOWER BROADWAY

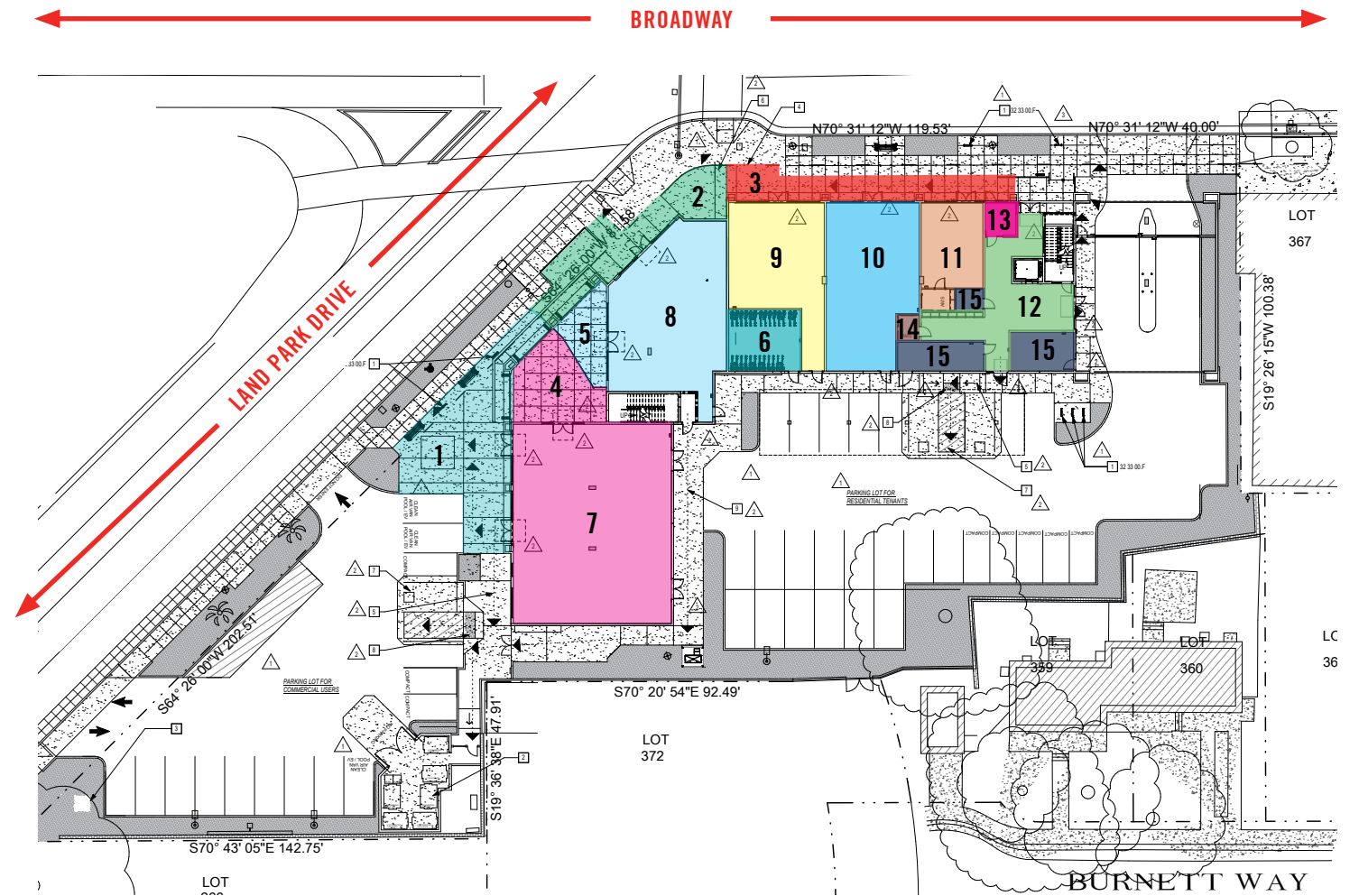


# FLOOR PLAN

8,772 SF TOTAL RETAIL

- 1** OUTDOOR PATIO 1: 1,455 SF
- 2** OUTDOOR PATIO 2: 854 SF
- 3** OUTDOOR PATIO 3: 713 SF
- 4** FULLY ENCLOSED INDOOR COURTYARD 4: 586 SF
- 5** FULLY ENCLOSED INDOOR COURTYARD 5: 309 SF
- 6** BIKE ROOM
- 7** SPACE A: 3,617 SF, FULLY ENCLOSED & CONDITIONED 586 SF INDOOR COURTYARD

- 8** SPACE B: 2,072 SF, FULLY ENCLOSED & CONDITIONED 309 SF INDOOR COURTYARD
- 9** SPACE C: 1,117 SF
- 10** SPACE D: 1,378 SF
- 11** SPACE E: 588 SF
- 12** COMMON AREA
- 13** LEASING
- 14** RESTROOM
- 15** EQUIP FIRE CONTROL/PUMP ROOM ELECTRICAL ROOM





NEARBY MURAL BY BRYAN VALENZUELA

# BUILDING LOCATION

BROADWAY IS SEEN BY MANY AS THE NEXT MAJOR DOWNTOWN CORRIDOR

On the cusp of Land Park and Southside Park neighborhoods, but soon to be a destination all its own, Sacramento's East Marina district, as a portion of the Broadway Corridor, is coming alive. Several key investment/developments have

been made nearby and the path of progress is beginning to accelerate. The street improvement program, the Broadway/WestSac Bridge, development of numerous high-end mixed-use projects and new retail/restaurant amenities are all helping to breathe new life

into this iconic blvd. City Councilman Steve Hansen says he sees Broadway as the next major downtown corridor to modernize now that K Street and R Street are maturing corridors. "The opportunities really abound here" Hansen said.







# NEARBY DEVELOPMENT PROJECTS

Below are some of the exciting developments and amenities advancing the greater Broadway region and the entire urban core.

## GREAT FOOD

Broadway is home to an eclectic and multicultural culinary scene with some with a unique and a long local history. These include Tower Café, Willie's Burgers, Jamie's Broadway Grille, and other Ethiopian, Thai, Indian, Japanese, Vegetarian, and Mexican restaurants. Just off Broadway down Riverside Avenue, you will find old favorites like the Riverside Clubhouse and Vic's Ice Cream, as well as a newer places like Massulo Pizza.

## BROADWAY BRIDGE

The Broadway Bridge is a government-led improvement that will connect Broadway to West Sacramento over the Sacramento River. This will allow convenient walkable access to the various amenities available in West Sacramento.

## SELLAND'S MARKET CAFE

Selland's Market Cafe opened their Broadway location in late 2017. This provides an additional place to eat and enjoy along Broadway, just a short walk or ride from the subject property.

## PEDESTRIAN IMPROVEMENTS

The city has plans to narrow the busy thoroughfare from two lanes in each direction to one with center turn lanes in order to slow traffic and encourage a main-street feel where people can ride bikes and restaurants can use the sidewalks to create patio seating.

## BROADWAY REDUX PHASE I & II

Local infill builder Indie Capital developed Broadway Redux project, ultra-modern urban infill project of nine single-family homes — designed and built to occupy a long vacant site on Lower Broadway, adjacent to the Historic city cemetery. Two models were inserted to respond to the varying contexts— a 3 story, vertical model fronting the urban Broadway street edge, and a more modest 2 story model nestled into the very residential Yale Street context. Designed by Johnsen Schmalig Architects, the award-

winning designs have bolstered the Broadway corridor as an exciting place to be.

## ONYX BOUTIQUE APARTMENTS

Directly north of (and essentially adjacent to) the subject property is ONYX, a 41-unit boutique apartment development that features modern design, a community courtyard for gathering, and is tailored to foodies and urban enthusiasts.

## THE TOWER THEATRE

The Tower Theatre is one of Sacramento's most iconic landmarks that opened its doors in 1938. More than 75 years later, it is still the premier place to catch some of the best independent and foreign films within 100 miles.

## 1817 BROADWAY

Local developers will develop a 74 unit over 8,500 square feet of retail mixed-use development at the northwest corner of 19th and Broadway.

## 1901 BROADWAY

Bay Area-based affordable housing developer EAH Housing has submitted plans for two five-story buildings at 1901 Broadway, with 150 apartments and about 1,700 square feet of retail space.

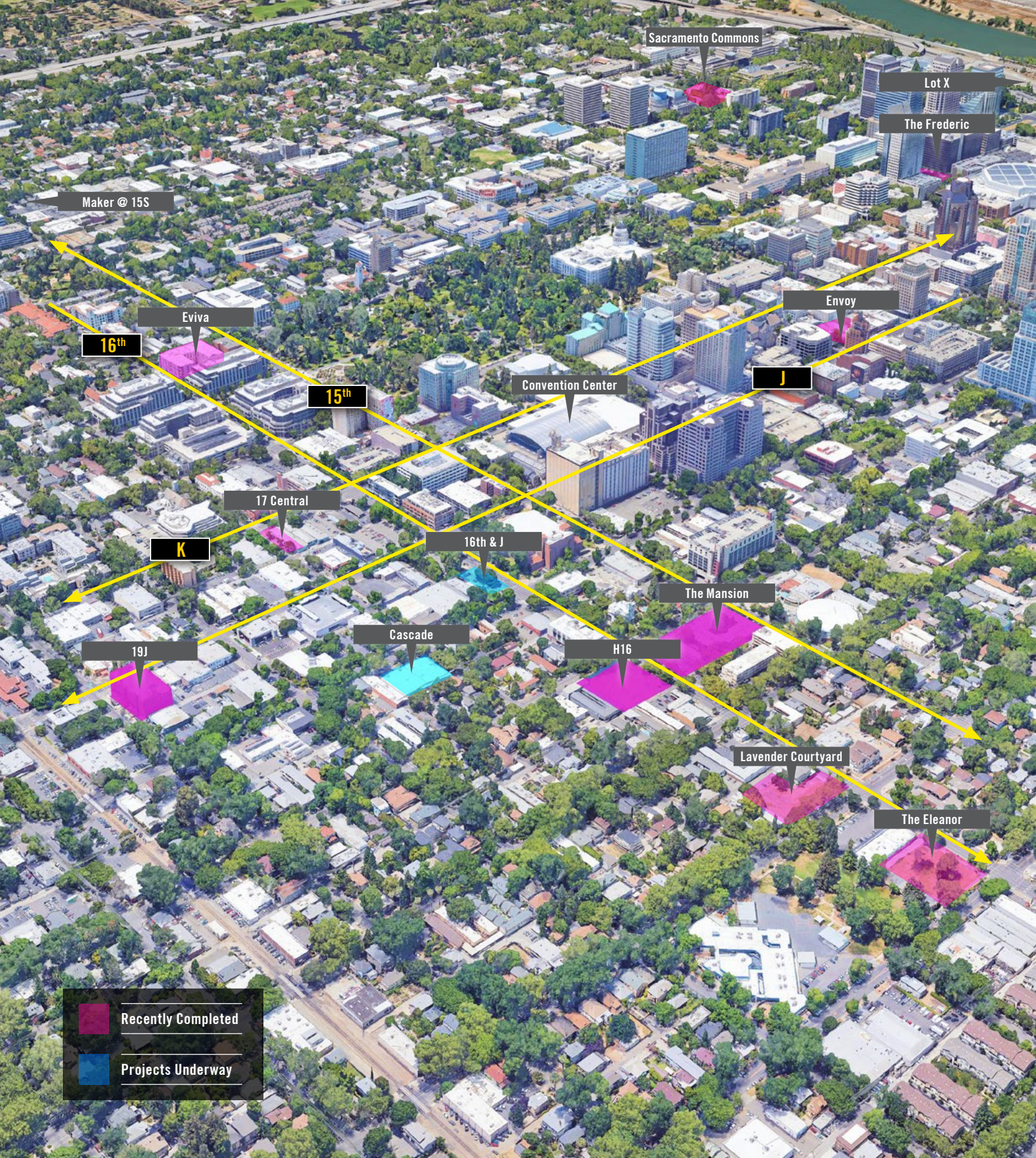
## 2110 BROADWAY

Local developers at SKK aim to develop a project called Broadway Village at 2110 Broadway, extending along the street from 21st to 23rd streets. The project would have either 593 or 693 residential units, a grocery store and other retail across six buildings.

## 9B

9th & Broadway — also by Indie Capital and Johnsen Schmalig Architects — is a community of 17 duplex homes occupying a site formerly fronting Sacramento's historic Bell Conservatory. The internal courtyard is the jewel of the community and cornerstone for neighborhood engagement. Phase I of the project was recently completed, with eight duplex homes fronting Broadway, renewing the urban streetscape with its gradient show of color. Phase II of the project - nine matching duplex buildings built along 9th Street - is nearing completion and sold out.





Sacramento Commons

Lot X

The Frederic

Maker @ 15S

Eviva

16<sup>th</sup>

15<sup>th</sup>

Convention Center

J

Envy

17 Central

K

16th & J

The Mansion

Cascade

H16

19J

Lavender Courtyard

The Eleanor

Recently Completed

Projects Underway

Section Three: The Location

# NEW RESIDENTS ON THE GRID

## 16th and J Mixed Use



Along the entire north side of J Street between 16th and 17th streets, a parking lot, restaurant building and vacant auto shop is proposed a seven-story, 200-apartment-unit project with ground-floor commercial space.

## Cascade



On the corner of 17th and I Street is a proposed 8-story project of 208 residential units with ground floor retail.

## The Mansion



Rising on the site of the former Mansion Inn Hotel at 16th and H Streets is a 5-story mixed-use community of 186 residential apartments, delivered Spring 2022.

## Envy



Mixed-use development project with 153 units over 10,250 SF of retail space with a first quarter - 2023 completion date.

## Maker @ 15S



A Mixed-use development project near the R Street Corridor with 137 units over 9,175 SF of retail space with a 2023 completion date.

## The Frederic



Mixed-use development project with 162 units over 7,000 SF of retail space with a 2022 completion.

## E@16 - The Eleanor



Recently completed project on the corner of E and 16th Street, featuring 95 units, luxurious lobby, dog spa, fitness center, and roof deck.

## Lot X



Proposed mixed-use development with a residential skyscraper component at 201 N Street. If built, the 32-story structure would be the tallest residential skyscraper in the State Capitol. Beyond housing, Lot X would create an open plaza overlooked by townhomes, a five-story office building, and a seven-story garage.

## Sacramento Commons



Mixed-use development project with 436 units over 6,000 SF of retail space. 2022 - 2023



# NEARBY AMENITIES

Located on the Broadway Corridor - Sacramento's up-and-coming submarket. 1600 Broadway tenants will enjoy being near the urban core with easy access to every corner of the city and easy access on and off to Highway 50/80 freeway.

## POPULAR RESTAURANTS NEAR 1600 BROADWAY (NOT ALL ARE MENTIONED HERE):

58 Degrees & Holding Co.	Dad's Kitchen	Karma Brew	Old Soul Coffee	Sibling by Pushkin's
Ace of Spades	Darling Aviary	Kin Thai	Otoro	Solomon's Delicatessen
Aioli Bodega Espanola	Der Biergarten	Kodaiko Ramen & Bar	Pachamama Coffee Coop	Station 16
Alaro	Drunken Noodle	Koja Kitchen	Paesano's	Sun & Soil Juice
At Ease Brewing	Echo & Rig	Kru	Paragary's	Tank House BBQ
Azul Mexican	Ella	Bombay Bar & Grill	Philz Coffee	Tapa the World
Babe's Ice Cream	Estelle Bakery & Patisserie	Kupros Craft House	Plant Power Fast Food	Tasty Dumpling
Beach Hut Deli	Federalist Public House	La Costa Cafe	Polanco	Temple Coffee
Beast + Bounty	Fieldwork Brewing Co.	Localis	Prelude Kitchen & Bar	Thai Basil
Bento Box	Fizz Champagne	LowBrau	Rare Tea	Thai Canteen
Bottle & Barlow	Fixin's Soul Kitchen	Majka Pizza	Rick's Dessert Diner	The Coconut on T
Buddha Belly Burger	Flatstick Pub	Mango's/Burgertown	Ro Sham Beaux	The Golden Bear
Burger Patch	Fox & Goose	Maydoon	Roots Coffee	The Mill Coffee House
Burgers and Brew	Ginger Elizabeth	Mendocino Farms	Roscoe's Bar	The Porch
Cafe Bernardo	Grange	Midici Neapolitan Pizza	Ruhstaller BSMT	The Rind
Cafeteria 15L	I Love Teriyaki	Mikuni Sushi	Saigon Alley	The Waterboy
Camden Spit & Larder	Il Fornaio	Morton's	Salt & Straw	Tres Hermanas
Camellia Coffee	Insomnia Cookies	Mulvaney's B&L	Sauced	Uncle Vito's Pizza
Cantina Alley	Iron Horse Tavern	N Street Cafe	Seoul St Midtown	University of Beer
Chipotle	Jack's Urban Eats	Nash & Proper	Scorpio Coffee	Zelda's Pizza
Crepeville	Ju Hachi	Nekter	Shady Lady	Zocalo



# SACRAMENTO

1,317,600  
LABOR FORCE

91,637  
TOTAL ESTABLISHMENTS

\$83,493  
MEDIAN HOUSEHOLD EXPENDITURE

GSEC 2023  
GIS Planning 2022

## CALIFORNIA'S FASTEST-GROWING METROPOLITAN AREA

While the pandemic, without question, has had a negative impact on the Downtown sub-market of Sacramento, the Midtown sub-market fared very well and, in many respects, has returned to normal.

At a macro-level, the future still looks very bright even for Downtown. The word "renaissance" is often overused and inappropriate to describe economic improvement in the urban core of cities throughout the United States. That is not the case in Sacramento. Nowhere is the word "renaissance" more applicable and demonstrable than the City of Sacramento.

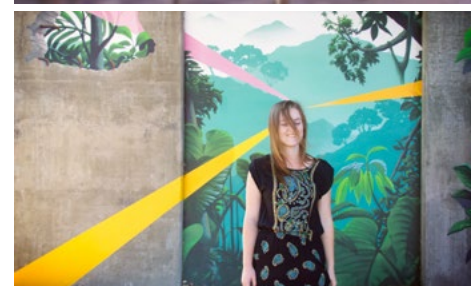
In 2012 the economic outlook for Downtown Sacramento, and the region as a whole, looked somewhat bleak. The urban core was anchored by a blighted and inactivated retail mall located dead center in its retail grid. The

Mall, formerly owned by Westfield, had undergone several facelifts none of which achieved the economic results envisioned. The Sacramento Kings, then owned by the Maloof Family, were threatening to leave for Seattle and the 30-year-old Sleep Train Arena located in a nearby suburb was tired and functionally obsolete.

All of this changed in 2013 when the City of Sacramento, working closely with NBA Commissioner David Stern, completed the single most meaningful and transformative economic transaction in Sacramento since it was named the Capitol. A Bay Area ownership team was brought in to purchase the Kings and construct a masterful plan to finance and build a new state-of-the-art 19,000 seat arena in place of the blighted center at the heart

of the downtown grid.

The impact to Sacramento's urban core of this miraculous achievement cannot be overstated and it has truly formed the foundation for Sacramento's urban renaissance. Since the formal approval by City Council of the Cities' contribution to construct the Arena (and retain the Sacramento Kings) the floodgates have figuratively opened to the urban migration of retailers, businesses and residents. Vacancy rates in commercial properties have dropped steadily and rapidly in every urban district. Property values escalated exponentially. Blighted buildings on the J, K and L Street corridors were (or are in the process of being) activated. Over 2,000 new residential units were constructed over the next three years.



# SACRAMENTO DATA BITES

Urban Sacramento is the perfect blend of carefully curated local and national retail embedded in a landscape of unique older buildings, mature trees, and a burgeoning mural scene. Business owners, residents, and investors near and far have flocked to the center of Sacramento's art, music, and cultural scene to cash in on this fruitful submarket. In July 2020, Sacramento was the most popular migration destination in the U.S, with more than half of home searches coming from buyers outside of the area (Redfin). In 2023 Forbes named Sacramento the best place to live in California. Attracted by the affordability of real estate, lower cost of living and booming Downtown, many have found that Sacramento is an ideal location to achieve a turnkey live-work-play lifestyle.

## SACRAMENTO'S CITY RANKINGS:

- #1 Best Place to Live in CA
- #1 Happiest Workers in Mid-sized City
- #3 Best Foodie City in America
- #4 Best Cities for Nerds
- #5 U.S. Cities with Fastest Growth in Tech Jobs
- #5 Bike-friendly Cities
- #6 Nation's Greatest Cities for Food Lovers
- #7 Best Place to Raise Active Children
- #9 City with Best Connectivity in U.S.
- #9 City for Happiest Young Professionals
- #10 Best City for Women in the Workforce
- #10 Most Hipster City in America

## POPULATION GREATER SACRAMENTO REGION

**2,623,204**

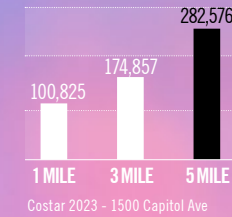
GSEC 2023  
Applied Geographic Solutions & GIS Planning 2022

## PERCENTAGE OF POPULATION WITH A DEGREE OR SOME COLLEGE:

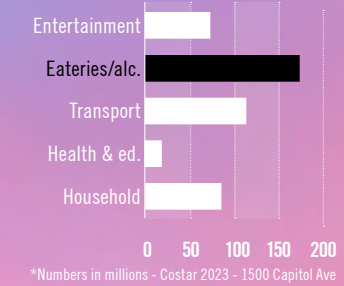
**68%**

GSEC 2023  
Applied Geographic Solutions & GIS Planning 2022

## NUMBER OF EMPLOYEES WITHIN VARYING RADIUS OF THE STATE CAPITOL:



## ANNUAL CONSUMER SPENDING WITHIN ONE MILE OF THE STATE CAPITOL:



## COST OF LIVING INDEX - \$100,000 BASE SALARY MOVE TO SACRAMENTO FROM SAN FRANCISCO

Grocery will cost:	18.68% less
Housing will cost:	52.93% less
Utilities will cost:	17.94% less
Transportation will cost:	9.30% less
Healthcare will cost:	12.58% less

GSEC 2023  
Applied Geographic Solutions & GIS Planning 2022

## SACRAMENTO LARGEST JOB COUNTS BY OCCUPATION:

Office & Administrative Support	14.20%	115,931
Sales	10.91%	89,063
Executive, Managers & Admin	10.58%	86,391
Food Preparation, Serving	6.12%	49,978
Business and Financial Operations	5.94%	48,500

GSEC 2023  
Applied Geographic Solutions & GIS Planning 2022

## SACRAMENTO OWNERS VS. RENTERS



GSEC 2023  
Applied Geographic Solutions & GIS Planning 2022

WALK SCORE:  
**97**  
Walker's Paradise

BIKE SCORE:  
**98**  
Biker's Paradise

TRANSIT SCORE:  
**53**  
Good Transit

walkscore.com  
2031 K Street



2131 CAPITOL, STE 100  
SACRAMENTO, CA 95816

916.573.3300 | [TURTONCOM.COM](http://TURTONCOM.COM)

**SCOTT KINGSTON**  
SENIOR VICE PRESIDENT - LIC. 01485640  
916.573.3309  
[SCOTTKINGSTON@TURTONCOM.COM](mailto:SCOTTKINGSTON@TURTONCOM.COM)

**JACK SCURFIELD**  
DIRECTOR - LIC. 02127988  
916.573.3316  
[JACKSCURFIELD@TURTONCOM.COM](mailto:JACKSCURFIELD@TURTONCOM.COM)

© 2024 The information contained in the Offering memorandum is confidential and is not to be used for any other purpose or made available to other persons without the express written consent of Turton Commercial Real Estate ("TCRE"), Ken Turton or the owner. The material contained herein is based upon information supplied by owner in coordination with information provided by TCRE from sources it deems reasonably reliable. Summaries of documents are not intended to be comprehensive or all-inclusive but rather a general outline of the provisions contained herein and subject to more diligent investigation on the part of the prospective purchaser. No warranty, expressed or implied, is made by owner, TCRE or any other respective affiliates, as to the accuracy or completeness of the information contained herein or any other written or oral communication provided to a prospective purchaser in the course of its evaluation of the Property. No legal liability is assumed or to be applied in connection with the information or such other communication. Without limiting the general nature of the foregoing, the information shall not be deemed a representation of the state of affairs of the Property or constitute an indication that there has been no change in the business affairs, specific finances or specific condition of the Property since the date of preparation of the information. Prospective purchaser shall make their own projections and conclusions without reliance upon the materials contained herein and conduct their own independent due diligence, inspection and review of the Property, including but not limited to engineering and environmental inspections, to determine the condition of the Property and the existence of any potential hazardous material located at the site.

