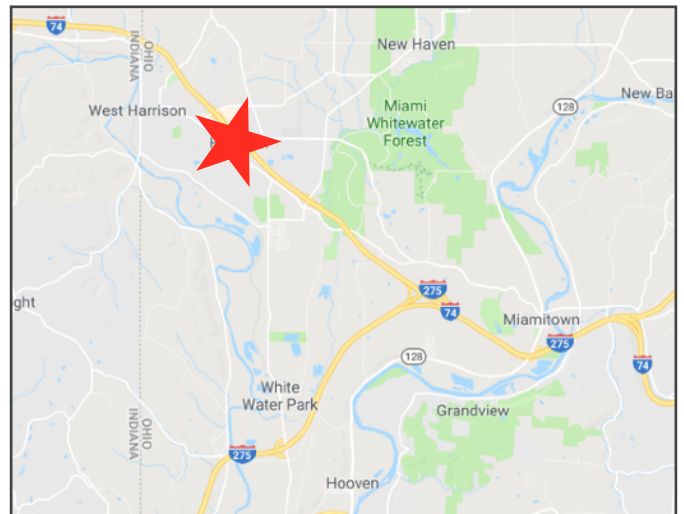


**LAND FOR SALE**  
10293 Cornerbrook Road  
Harrison, OH 45030



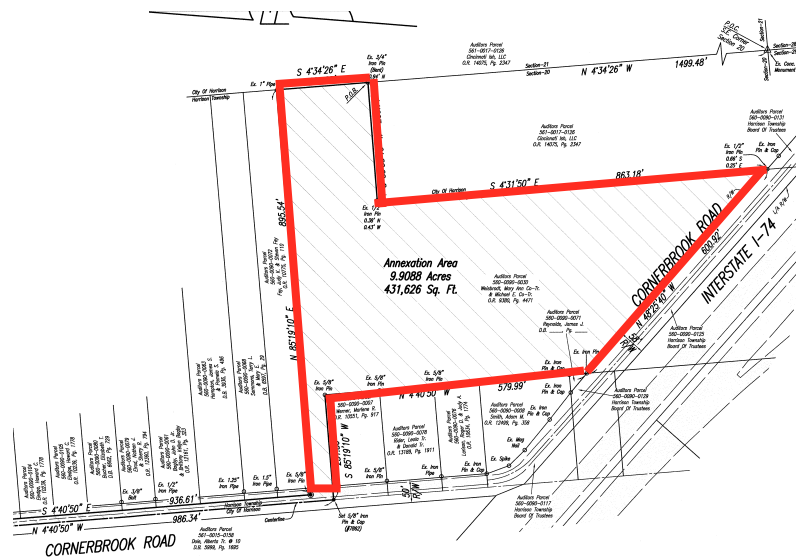
### Property Highlights

- 9.6910 acres for development with I-74 highway visibility in prime location!
- Zoned R-0
- Minutes to I-74 between exits #1 and #3
- Multiple points of access
- New gas line along Gainsview & Cornerbrook
- Minutes to new Kroger MarketPlace, McDonalds, CVS, First Financial, Taco Bell, banks, Walgreens, Starbucks, banks & more!
- Utilities forthcoming
- Ideal for industrial, office, storage or flex
- Parcel ID's: 561-0015-0553-00
- Offered at \$699,900.00 (\$72,221/acre)



**John Stretch | c: 513.623.6505 | o: 513.860.5050 | [john@nrrg.com](mailto:john@nrrg.com)**  
**Tyler Minges | c: 513.460.0102 | o: 513.858.7574 | [tminges@huff.com](mailto:tminges@huff.com)**

**LAND FOR SALE**  
 10293 Cornerbrook Road  
 Harrison, OH 45030



**John Stretch | c: 513.623.6505 | o: 513.860.5050 | [john@nrrg.com](mailto:john@nrrg.com)**  
**Tyler Minges | c: 513.460.0102 | o: 513.858.7574 | [tminges@huff.com](mailto:tminges@huff.com)**



**LAND FOR SALE**  
**10293 Cornerbrook Road**  
**Harrison, OH 45030**

Radius	1 Mile	3 Mile	5 Mile
<b>Population</b>			
2028 Projection	7,421	19,286	33,230
2023 Estimate	7,182	18,641	32,186
2010 Census	6,090	15,732	27,933
Growth 2023 - 2028	3.33%	3.46%	3.24%
Growth 2010 - 2023	17.93%	18.49%	15.23%
<b>2023 Population by Hispanic Origin</b>	105	308	650
<b>2023 Population</b>	7,182	18,641	32,186
White	7,024 97.80%	18,242 97.86%	31,497 97.86%
Black	20 0.28%	57 0.31%	112 0.35%
Am. Indian & Alaskan	12 0.17%	40 0.21%	69 0.21%
Asian	63 0.88%	131 0.70%	171 0.53%
Hawaiian & Pacific Island	1 0.01%	2 0.01%	3 0.01%
Other	62 0.86%	170 0.91%	334 1.04%
U.S. Armed Forces	5	12	14
<b>Households</b>			
2028 Projection	2,860	7,627	12,883
2023 Estimate	2,754	7,345	12,446
2010 Census	2,269	6,089	10,680
Growth 2023 - 2028	3.85%	3.84%	3.51%
Growth 2010 - 2023	21.38%	20.63%	16.54%
Owner Occupied	2,090 75.89%	5,614 76.43%	9,618 77.28%
Renter Occupied	664 24.11%	1,730 23.55%	2,828 22.72%
<b>2023 Households by HH Income</b>	2,755	7,345	12,446
Income: <\$25,000	365 13.25%	1,142 15.55%	1,731 13.91%
Income: \$25,000 - \$50,000	659 23.92%	1,600 21.78%	2,571 20.66%
Income: \$50,000 - \$75,000	486 17.64%	1,131 15.40%	1,997 16.05%
Income: \$75,000 - \$100,000	324 11.76%	1,078 14.68%	1,885 15.15%
Income: \$100,000 - \$125,000	355 12.89%	737 10.03%	1,447 11.63%
Income: \$125,000 - \$150,000	213 7.73%	589 8.02%	988 7.94%
Income: \$150,000 - \$200,000	272 9.87%	730 9.94%	1,168 9.38%
Income: \$200,000+	81 2.94%	338 4.60%	659 5.29%
<b>2023 Avg Household Income</b>	\$83,726	\$86,995	\$89,881
<b>2023 Med Household Income</b>	\$67,977	\$70,647	\$74,036

**John Stretch | c: 513.623.6505 | o: 513.860.5050 | [john@nrrg.com](mailto:john@nrrg.com)**  
**Tyler Minges | c: 513.460.0102 | o: 513.858.7574 | [tminges@huff.com](mailto:tminges@huff.com)**

Disclaimer: The Realtor involved in selling the premises is relying on all information provided herein or supplied by owner or owner's sources in connection with the Real Estate. We cannot guarantee this information.