

1201 Peachtree Street NE Bldg 400
Suite 1215
Atlanta, GA 30361
 4,881 SF Available

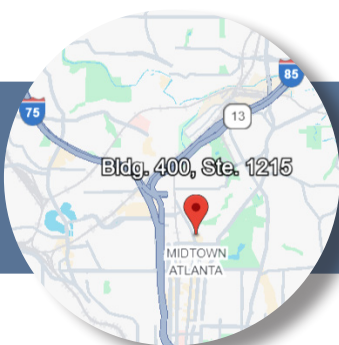
DTSPADE®
 SPECIALIZED REAL ESTATE



PROPERTY OVERVIEW

Located in the heart of Midtown Atlanta at 1201 Peachtree Street NE, this premier sublease opportunity offers 4,881 RSF of Class A office space within the renowned Colony Square development. Positioned on the 12th floor of Building 400, Suite 1215 delivers immediate availability with a sublease term through March 2028. Tenants enjoy direct access to a wide range of top-tier amenities, including a shared conference center, onsite fitness facility, and covered parking. Just steps from the Arts Center MARTA station and surrounded by over 160,000 SF of retail, dining, and entertainment options, this workspace is ideal for businesses seeking prestige, accessibility, and a dynamic urban environment.

Scan the QR code for a virtual walkthrough!



***Smyrna Submarket
Location.***

Call for more information!

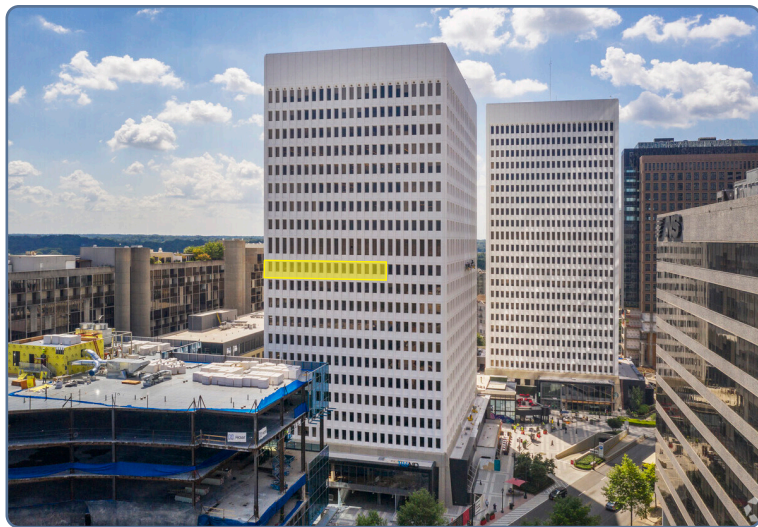
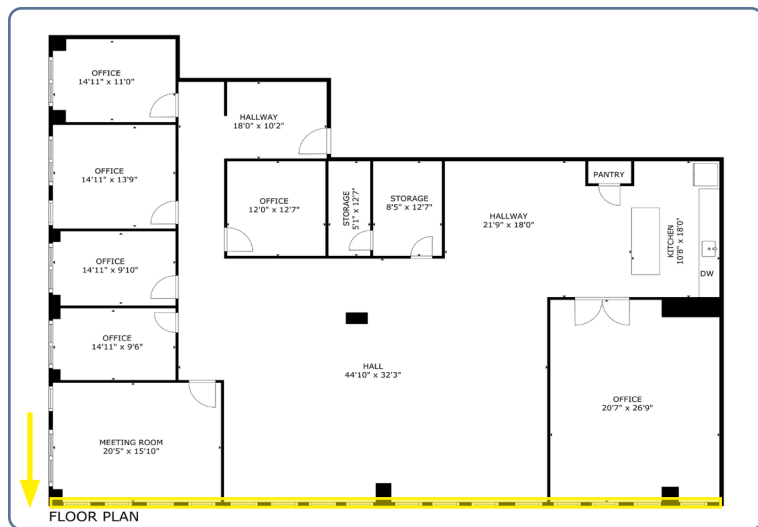
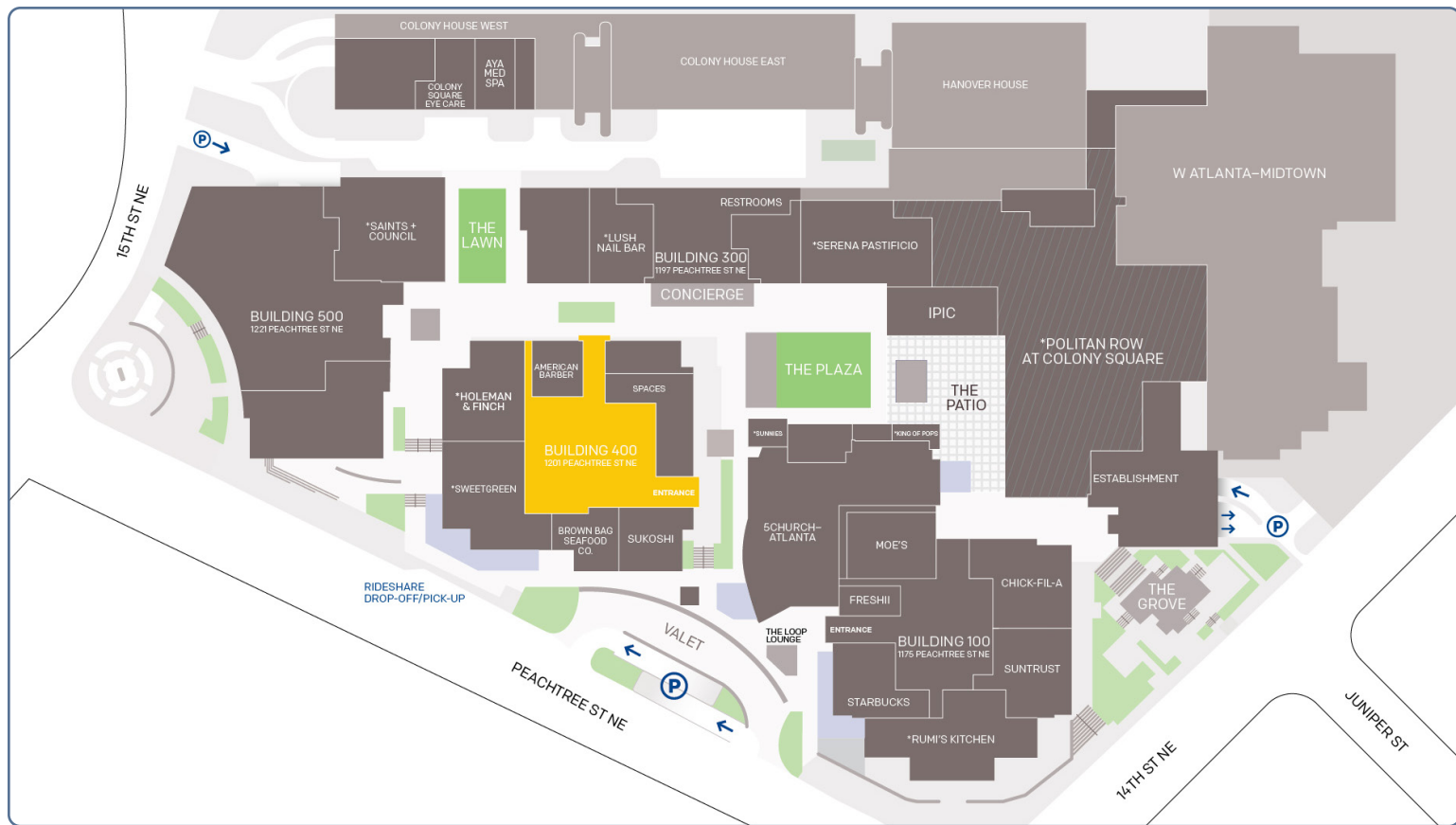
PROPERTY HIGHLIGHTS

- Available for Sublease
- Suite Size: 4,881 RSF
- Class A Office Space
- Term Through: March 31, 2028
- Covered Parking: 2 permits per 1,000 SF
- Fitness Center & Shared Conference Facilities Onsite
- Walking Distance to Arts Center MARTA
- Located at Colony Square in Midtown Atlanta
- Surrounded by 160,000+ SF of Retail, Restaurants & Entertainment
- Access to 40,000 SF of Open-Air Greenspace
- 262 Luxury Residences & 466-Room Hotel Onsite
- 12+ Bike Share Stations Nearby

CONTACT

Kay Beggs
 kay.beggs@dtspade.com
 c. 678.778.0714

W. Bryant Cornett, FACHE, SIOR, LEED AP
 bryant@dtspade.com
 o. 404.939.9511



DTSPADE

1201 Peachtree Street NE Bldg 400
Suite 1215
Atlanta, GA 30361