

EVERETT OFFICE SPACE



FOR SUBLEASE

2708 COLBY AVE
EVERETT, WASHINGTON

AVAILABLE TBD

2,838 SF

REPRESENTED BY

TONY MONTECALVO
Senior Commercial Broker

425-433-2133
tonymontecalvo@cbbain.com

Coldwell Banker Bain Commercial
550 Kirkland Way, Suite 100B
Kirkland, Washington 98033



This information supplied herein is from sources we deem reliable. It is provided without any representation, warranty, or guarantee, expressed or implied as to its accuracy. Prospective Tenant should conduct an independent investigation and verification of all matters deemed to be material, including, but not limited to, statements of income and expenses. Consult your attorney, accountant, or other professional advisor.

Contact: Tony MonteCalvo for details

Direct: 425-443-2133 - tonymontecalvo@cbbain.com

EVERETT OFFICE SPACE



THE PROPERTY

2708 COLBY AVE
EVERETT, WASHINGTON

PROPERTY DETAILS

Ideal for professional services business/retail

AVAILABLE FOR SUBLEASE - 2838 Sq. Ft. of turnkey office space. Located in Everett's growing dynamic downtown commercial core with excellent access to Hwy 2 and I-5. Prime location within walking distance to amenities including restaurants, banks, Everett performing Arts Center, and much more. Master Lease expires 2/28/2023.

PROPERTY SPECIFICATIONS

Property Type:	Office
Class/Zone:	Office/Retail B-3 Everett
Building Size:	7,072 SqFt
Land:	6,534 SqFt
Number of Stories:	1
Year Built/ Renovated:	1935/2005
Typical Floor Size:	3,525 SqFt

SUBLEASE INFORMATION

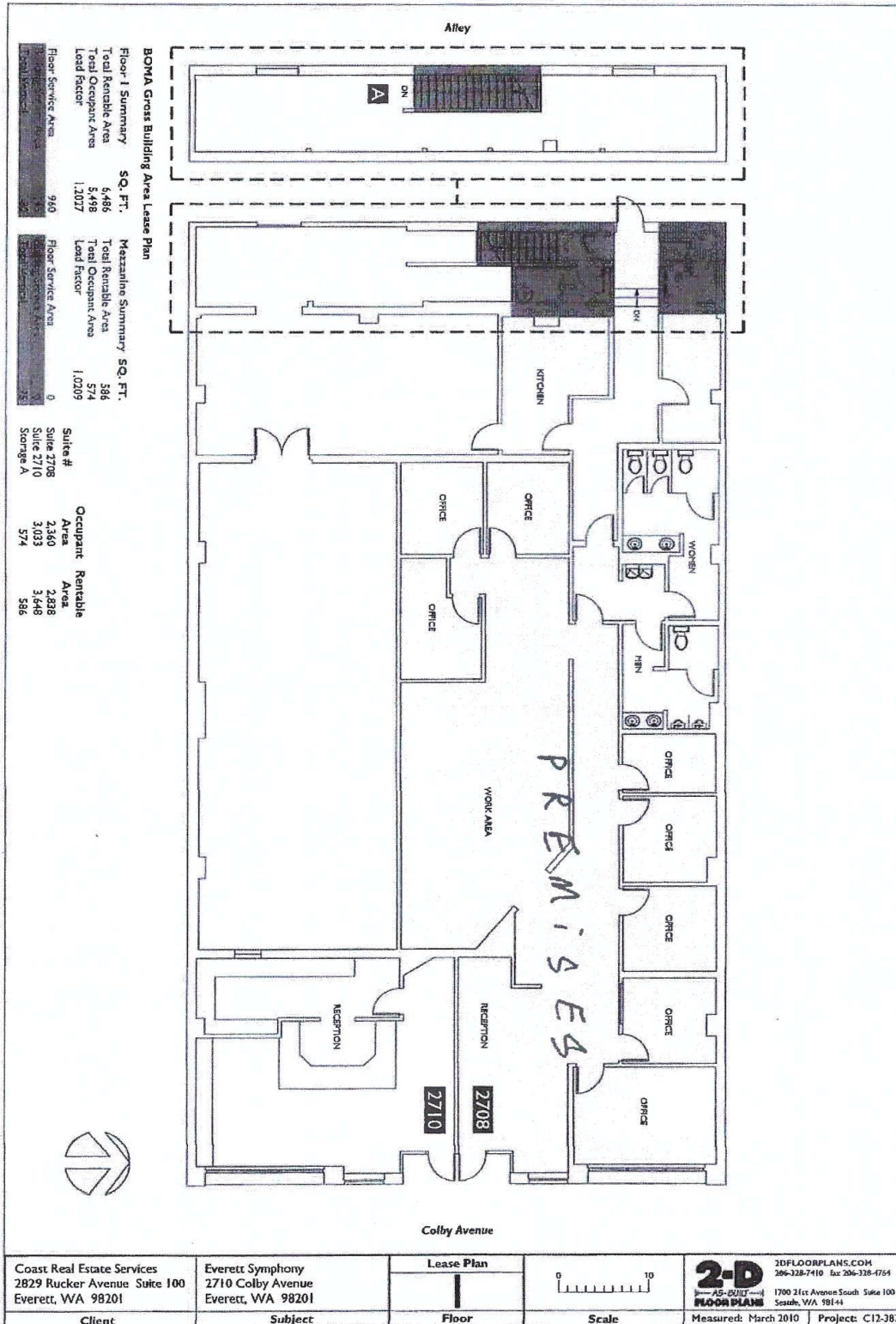
Tenancy:	1 2,838 SqFt, available with agreement of the parties.
Space Available:	
Annual Rent:	\$12/SF - NNN = \$7.04/current
Sub Lease Terms:	Expires 2/28/2023

LOCATION INFORMATION

Cross Street:	Everett Ave
Located:	Colby Ave
Business Park	No
Land:	Everett CBD
Submarket	Everett
County	Snohomish

EVERETT OFFICE SPACE

FLOOR PLANS



Coast Real Estate Services
2829 Rucker Avenue Suite 100
Everett, WA 98201

Everett Symphony
2710 Colby Avenue
Everett, WA 98201

Lease Plan
Floor



2-D
AS-BUILT
FLOOR PLANS
2DFLOORPLANS.COM
206-328-7410 Fax 206-328-4764
1700 21st Avenue South Suite 100
Seattle, WA 98144
Measured: March 2010 Project: C12-387

EVERETT OFFICE SPACE



PROPERTY OVERVIEW

PROPERTY PHOTOS



EVERETT OFFICE SPACE

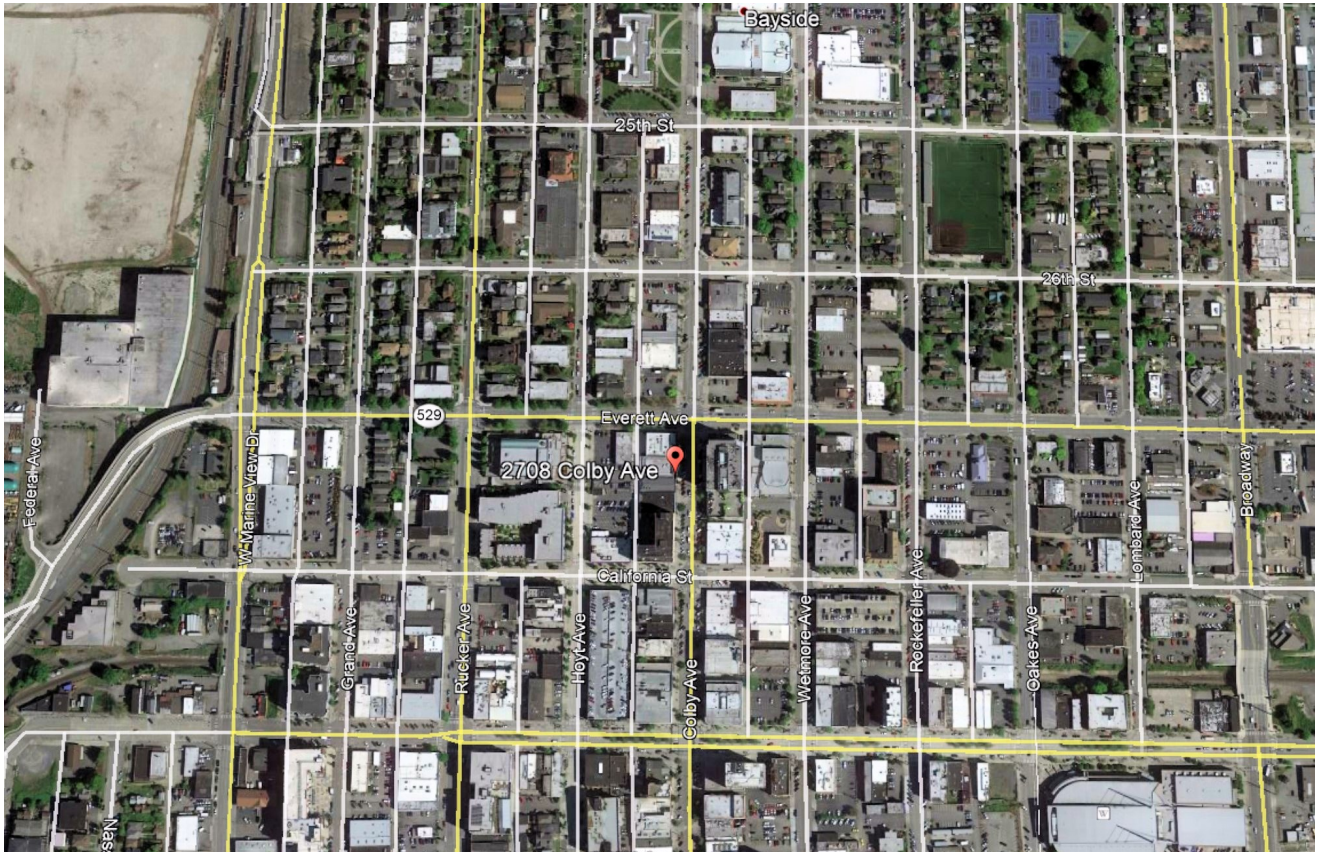
PROPERTY OVERVIEW

PROPERTY PHOTOS



EVERETT OFFICE SPACE

MAPS & AERIALS



EVERETT OFFICE SPACE



CONTACT INFORMATION

For more information, please contact:

TONY MONTECALVO

Senior Commercial Broker

425-433-2133

tonymontecalvo@cbbain.com

Coldwell Banker Bain Commercial
550 Kirkland Way, Suite 100B
Kirkland, Washington 98033

