

**UNDER CONSTRUCTION
DELIVERING Q2 2025**

the

MERCURY

AT WILDWOOD SHOPPING CENTER | BETHESDA, MD



**MATT SKALET | 202-420-7775 | MSKALET@KLN.B.COM
BEN BECKER | 202-420-7773 | BBECKER@KLN.B.COM**

kln**b**

the DETAILS



SITE DETAILS

- New mixed use project adjacent to Bethesda's high-end Wildwood
- 60 new apartments above 3 retail units totaling 10,093 SF
 - Space 1: 3,961 SF with Type 1 Restaurant Venting
 - Space 2: 2,875 SF with Type 1 Restaurant Venting
 - Space 3: 3,257 SF
- 60 dedicated retail garage parking spaces plus 114 common surface parking spaces
- Monument signage available on Old Georgetown Road
- Q4 2025 Delivery

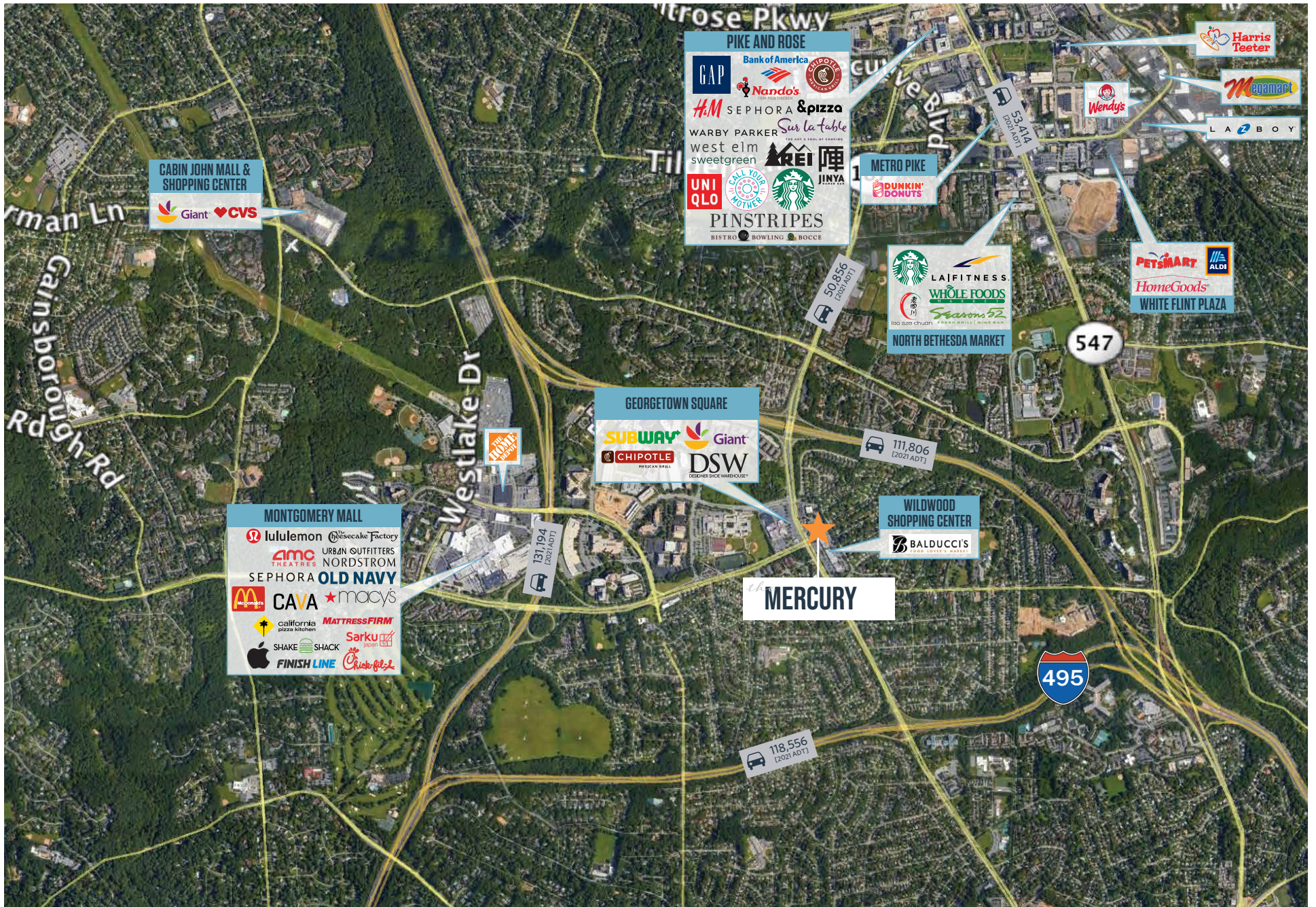
2023 DEMOGRAPHICS

	1 Mile	3 Mile	5 Mile	10 Min Drive
Average HH Income	\$218,363	\$211,339	\$208,799	\$226,825
Population	19,390	137,937	376,195	117,736
Daytime Population	26,169	202,318	446,811	178,251
Households	8,076	56,160	142,656	49,228
College Educated	78%	77%	69%	79%

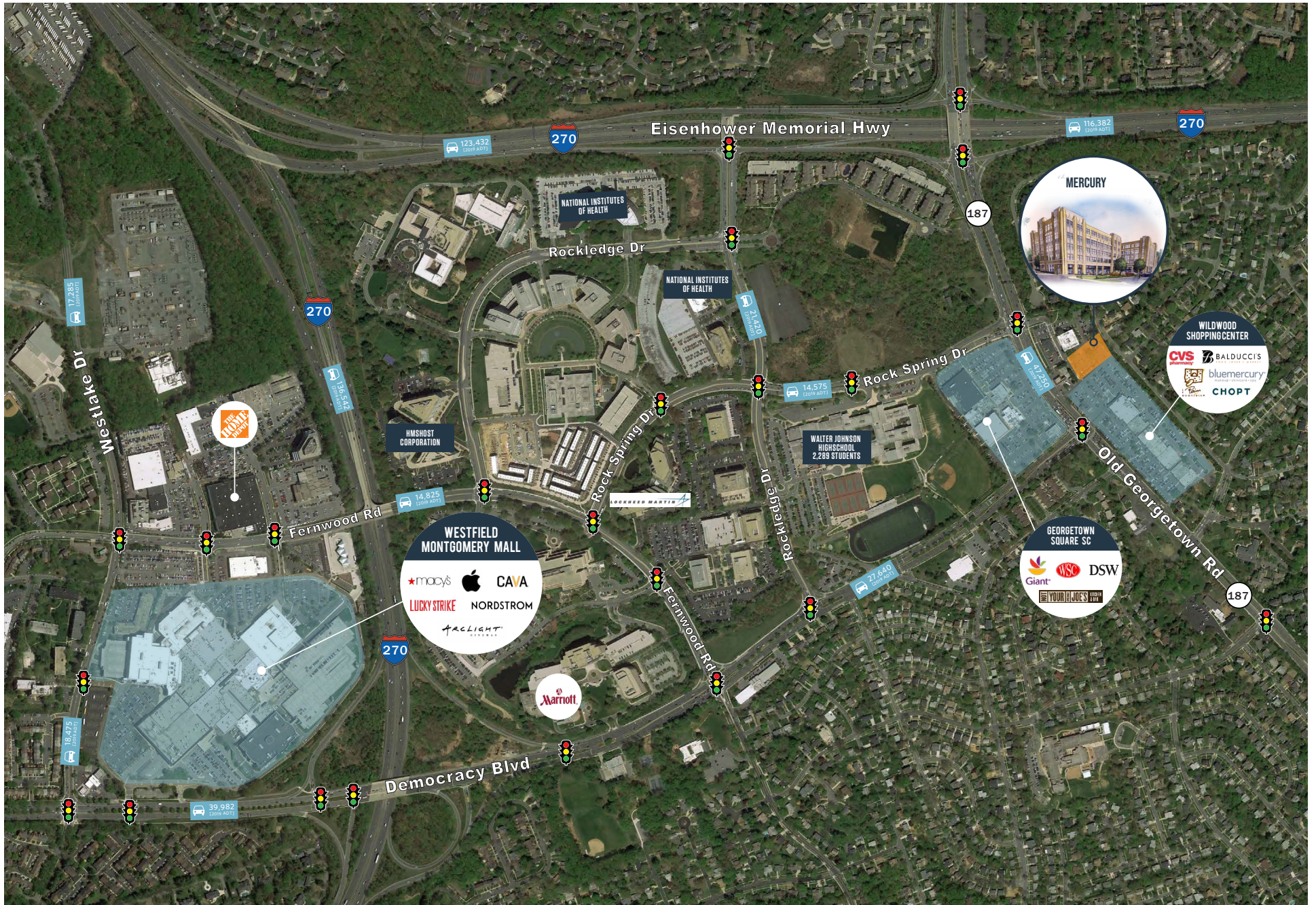
JOIN:



the MARKET



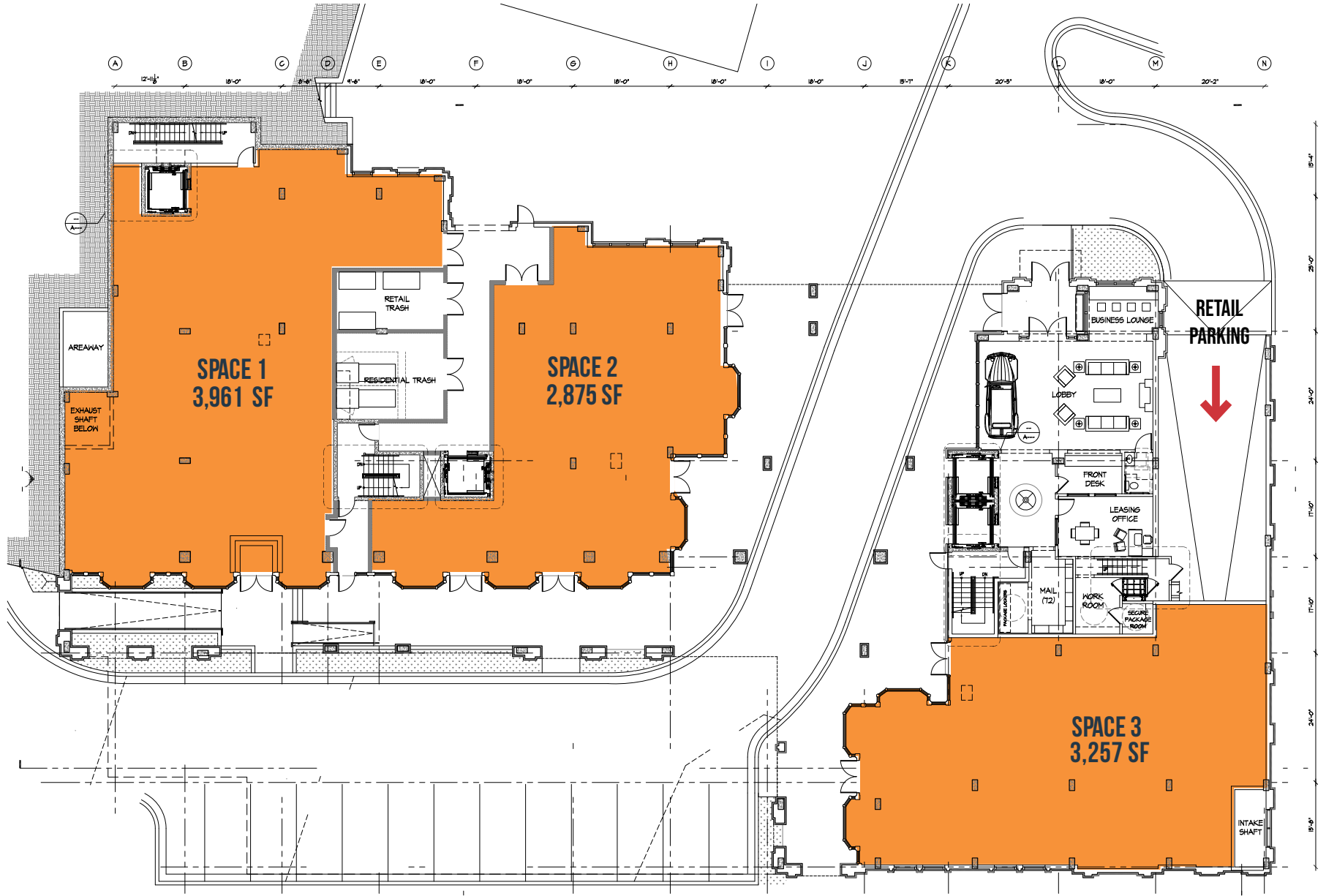
the NEIGHBORHOOD



the DEVELOPMENT

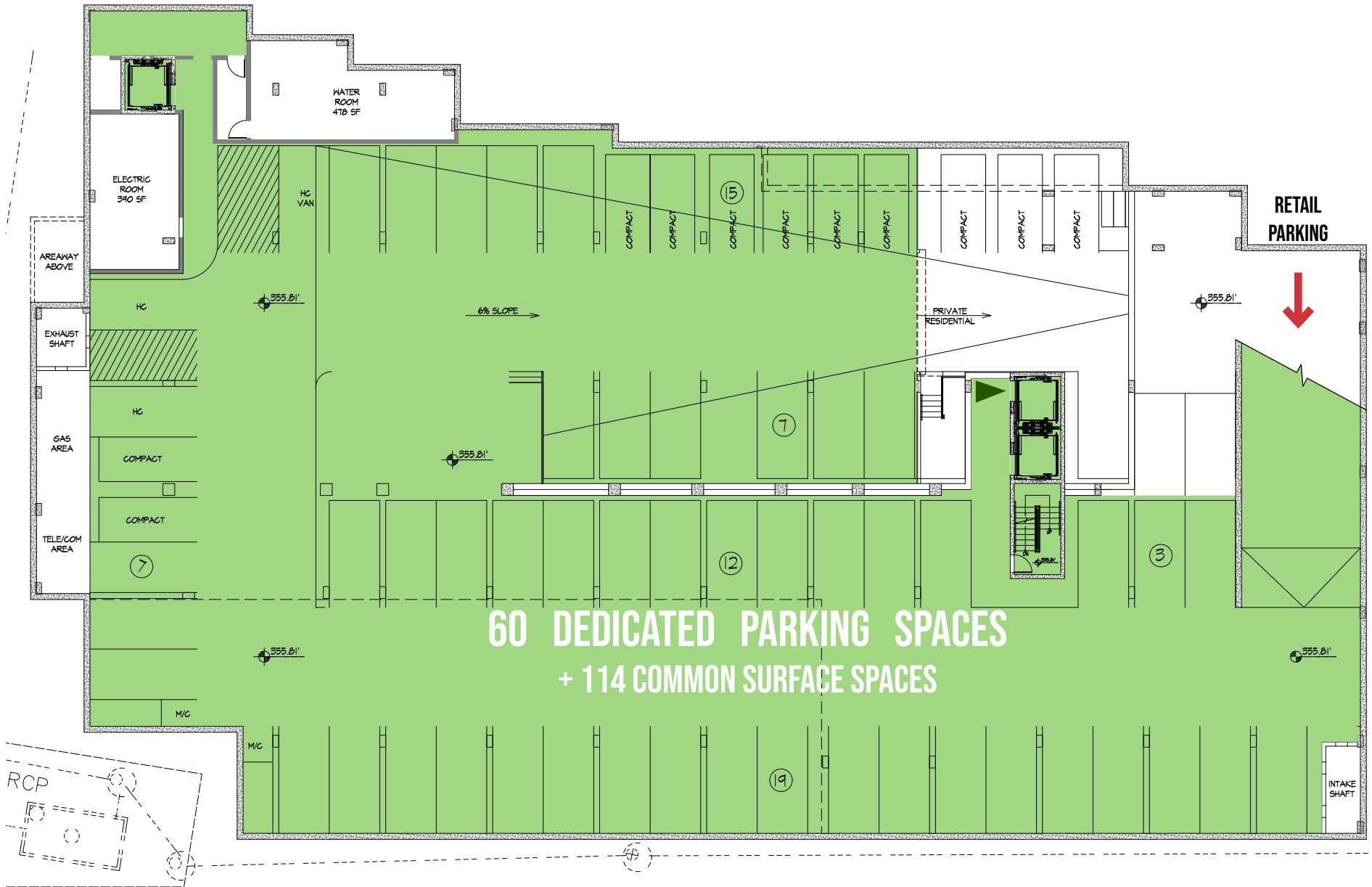


↑ OLD GEORGETOWN ROAD



BALDUCCI'S ↓

the PARKING



**60 DEDICATED PARKING SPACES
+ 114 COMMON SURFACE SPACES**



the **MERCURY**

AT WILDWOOD SHOPPING CENTER | BETHESDA, MD

kln**b**

MATT SKALET | 202-420-7775 | MSKALET@KLN.B.COM
BEN BECKER | 202-420-7773 | BBECKER@KLN.B.COM

While we have no reason to doubt the accuracy of any of the information supplied, we cannot, and do not, guarantee its accuracy. All information should be independently verified prior to a purchase or lease of the property. We are not responsible for errors, omissions, misuse, or misinterpretation of information contained herein and make no warranty of any kind, express or implied, with respect to the property or any other matters