

For Lease

Office Condo

Close to many amenities



**Lease Rate: \$2,200 Per Month
+/-1,608 SF
Full Service**

755 S Telshor Blvd, Suite 201-T

Las Cruces, NM 88011

Property Features

- \$2,200 monthly rent includes electric, gas, water, sewer, and trash
- Includes tenant's pro-rata share of property taxes, building insurance and common area maintenance
- Great for medical/professional office users
- Waiting area, reception area
- Four exam rooms or offices with sinks and two offices
- Storage room, break room and one ADA bathroom

Located on south Telshor Blvd, across from the Mesilla Valley Mall and just south of Hotel Encanto. It is situated between the two hospitals; Memorial Medical Center (1.14 miles) and MountainView Regional Medical Center (1.28 miles).



For more information:

Jacob Slavec

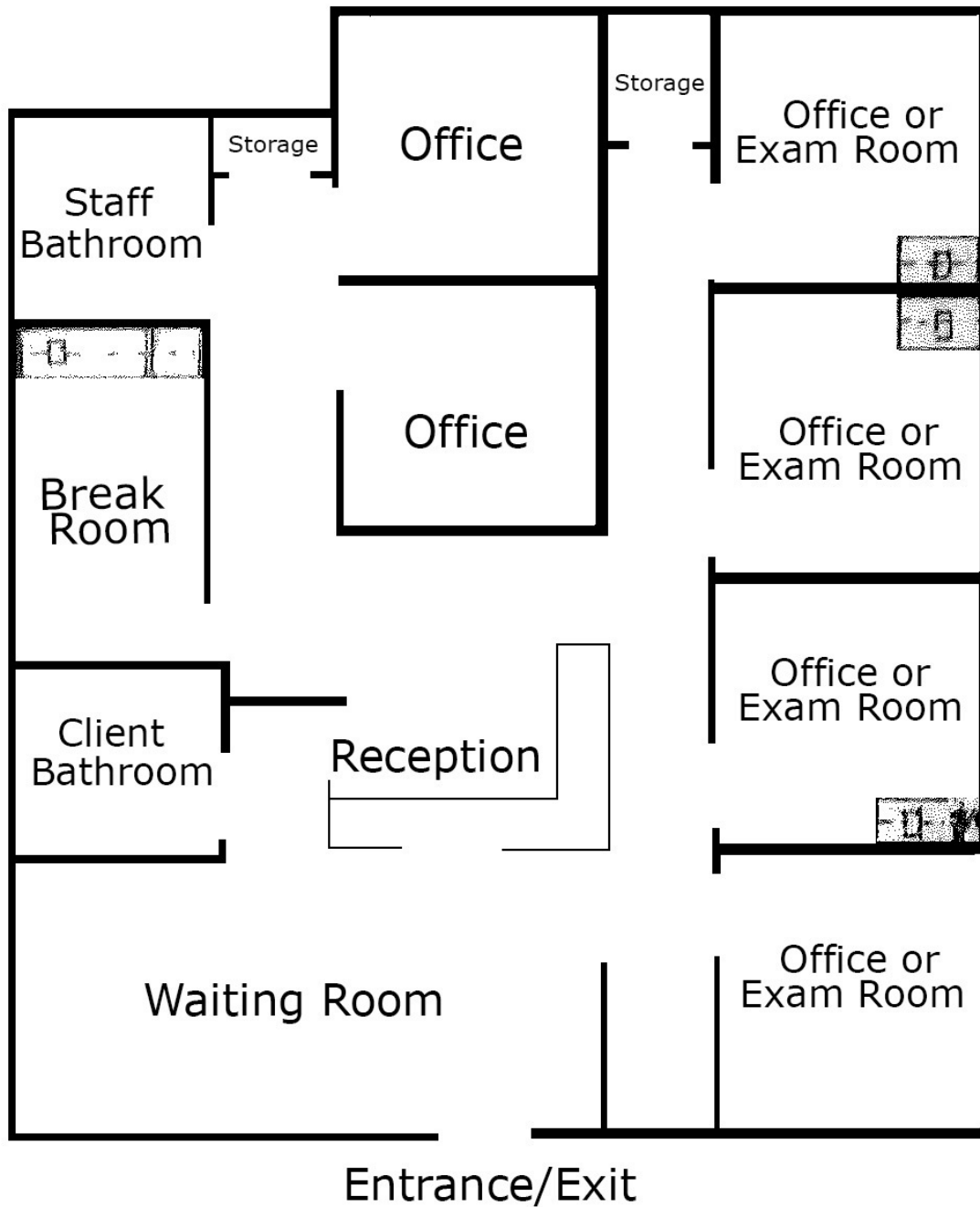
575 644 8529 • jacob@1stvalley.com

Cheryl Reome

575 644 9165 • cheryl@1stvalley.com

For Lease

Floor Plan



For Lease

Interior Photos



For Lease

Office Condo

