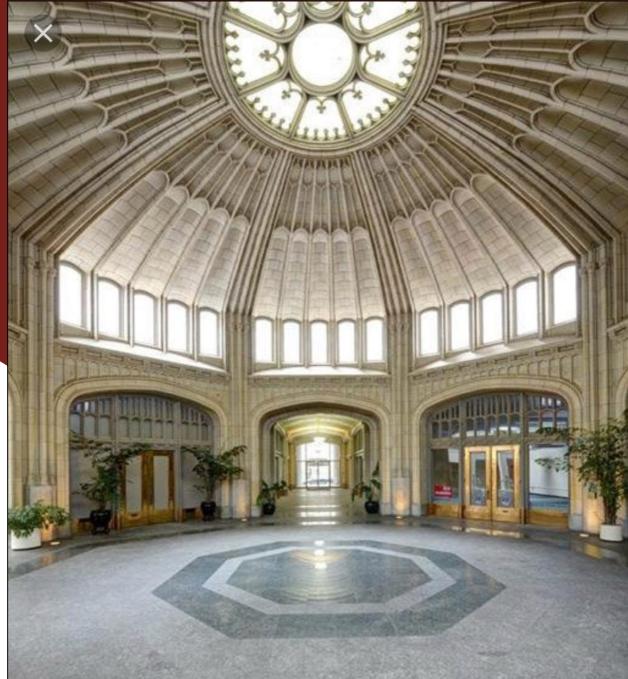




HEALEY BUILDING

# Downtown Office / Retail Space For Lease HISTORIC HEALEY BUILDING

Bounded by Broad Street, Walton Street, Forsyth Street & Poplar Street



## Healey Building

57 Forsyth St NW, Suite R1-R2 (Near the Corner of Walton Street & Forsyth Street)  
Atlanta, GA 30303

**SIZE:** 2,250 RSF

**RATE:** Inquire

**OPEX:** \$8.78/SF

- Street Level Exposure and Access
- Located on the Amazing Healey Building Rotunda
- Adjacent to GSU Aderhold Learning Center, Rialto Theatre & the GSU School of Music
- Located in the Heart of the Opportunity Zone. For more information go to <https://www.investatlanta.com/business/bonds-incentives/opportunity-zones/>
- Building on the National Register of Historic Places
- Numerous Restaurants Located at the Building and on Broad Street



Dave Smith

404.869.2605

dave@joelandgranot.com

For complete details, please visit: [www.joelandgranot.com](http://www.joelandgranot.com)



**JOEL & GRANOT**

COMMERCIAL REAL ESTATE

633 Antone St NW, Atlanta, GA 30318  
(ph) 404.869.2600 | (fax) 404.869.2601

The information was obtained from sources we assume are reliable. We

do not doubt its accuracy, however we



HEALEY BUILDING

# Healey Building Retail Floor Plan

Walton Street



633 Antone St NW, Atlanta, GA 30318  
(ph) 404.869.2600 | (fax) 404.869.2601

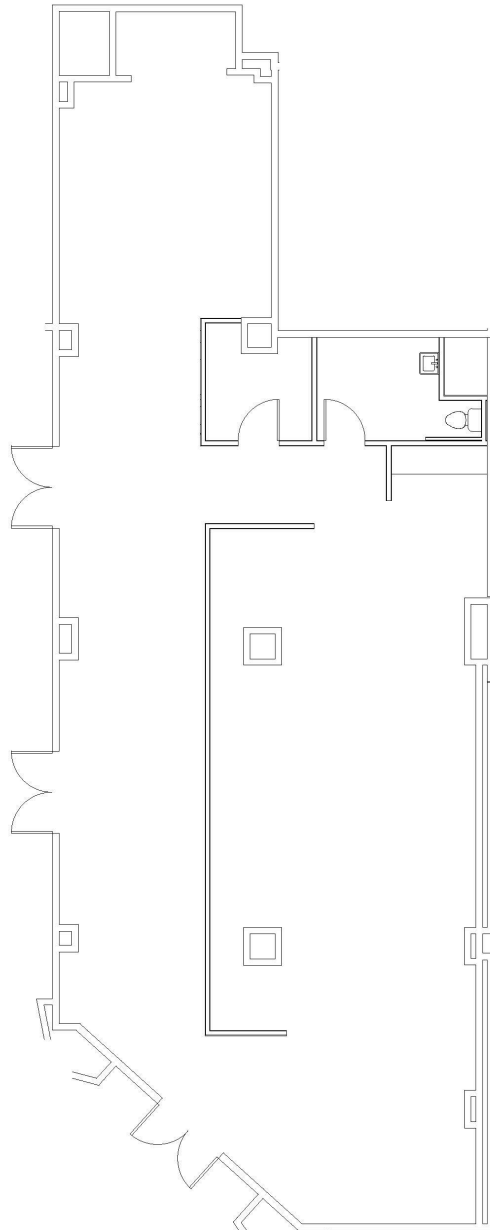
The information was obtained from sources we assume are reliable. We do not doubt its accuracy, however we do not guarantee it. No liability is assumed for errors and omissions. Information is subject to changes and withdrawal without notice.



HEALEY BUILDING

# Healey Building Suite R1-R2 2,250 RSF

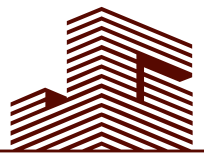
Walton Street



**Dave Smith**  
404.869.2605  
dave@joelandgranot.com

For complete details, please visit: [www.joelandgranot.com](http://www.joelandgranot.com)

633 Antone St NW, Atlanta, GA 30318  
(ph) 404.869.2600 | (fax) 404.869.2601



**JOEL & GRANOT**  
COMMERCIAL REAL ESTATE

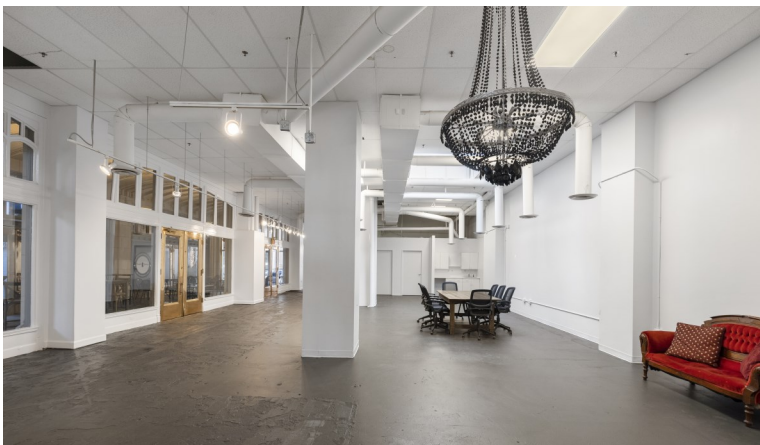
The information was obtained from sources we assume are reliable. We do not doubt its accuracy, however we do not guarantee it. No liability is assumed for errors and omissions. Information is subject to changes and withdrawal without notice.





HEALEY BUILDING

# Healey Building Suite R1-R2 Photos



Dave Smith  
404.869.2605  
dave@joelandgranot.com

For complete details, please visit: [www.joelandgranot.com](http://www.joelandgranot.com)

633 Antone St NW, Atlanta, GA 30318  
(ph) 404.869.2600 | (fax) 404.869.2601



The information was obtained from sources we assume are reliable. We do not doubt its accuracy, however we do not guarantee it. No liability is assumed for errors and omissions. Information is subject to changes and withdrawal without notice.