

6,000 +/- SF LIGHT INDUSTRIAL BUILDING ON 0.241 +/- AC

LOCATED MINUTES FROM I-85

620 ELK ST ALEXANDER, ND 58831

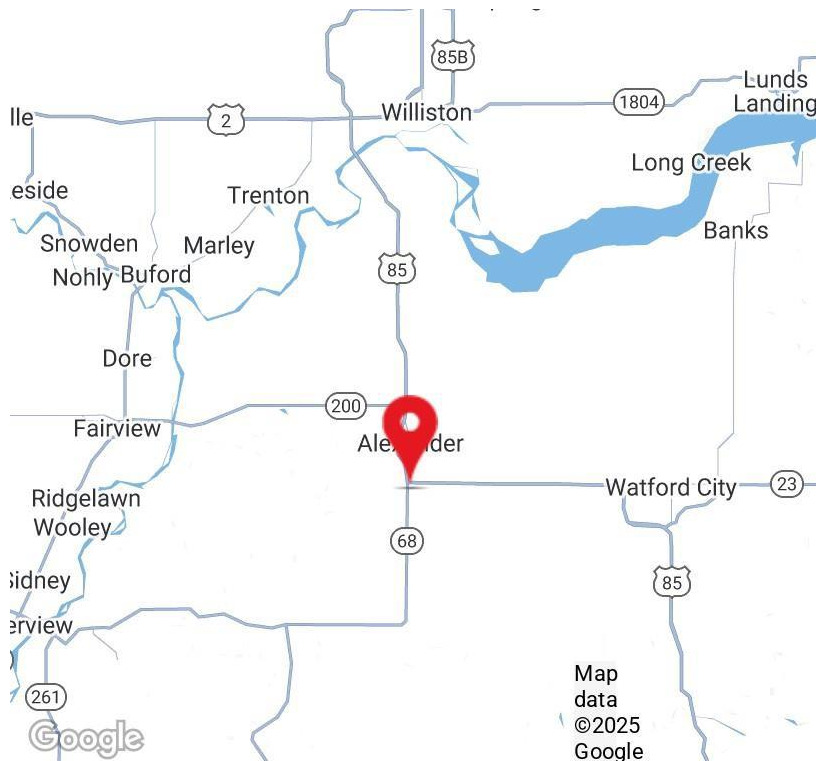
FOR LEASE



LEASE RATE CALL FOR PRICING

PROPERTY HIGHLIGHTS

- 6,000 +/- SF Industrial Space on .241 +/- AC
- 3,130 +/- SF Industrial Warehouse Space Plus 2,400 +/- SF Showroom/Storefront
- Recent Renovations Include New Office Flooring, Fresh Paint Throughout, and Updated Restrooms in Both Office and Shop
- Zoned commercial | Proposed use Includes Office or Light Industrial
- Parcel ID: 79-10-06700
- Ideally Located Under 3 Miles From I-85
- Just 19 Miles to Watford City and 29 Miles to Williston



Mike Elliott
CEO | Managing Broker
701.713.6606
mike.elliott@erescompanies.com



6,000 +/- SF LIGHT INDUSTRIAL BUILDING ON 0.241 +/- AC

LOCATED MINUTES FROM I-85

620 ELK ST ALEXANDER, ND 58831

FOR LEASE

AERIAL MAP



Imagery ©2025 Airbus,
Maxar Technologies

Mike Elliott
CEO | Managing Broker
701.713.6606
mike.elliott@erescompanies.com

ERES | erescompanies.com



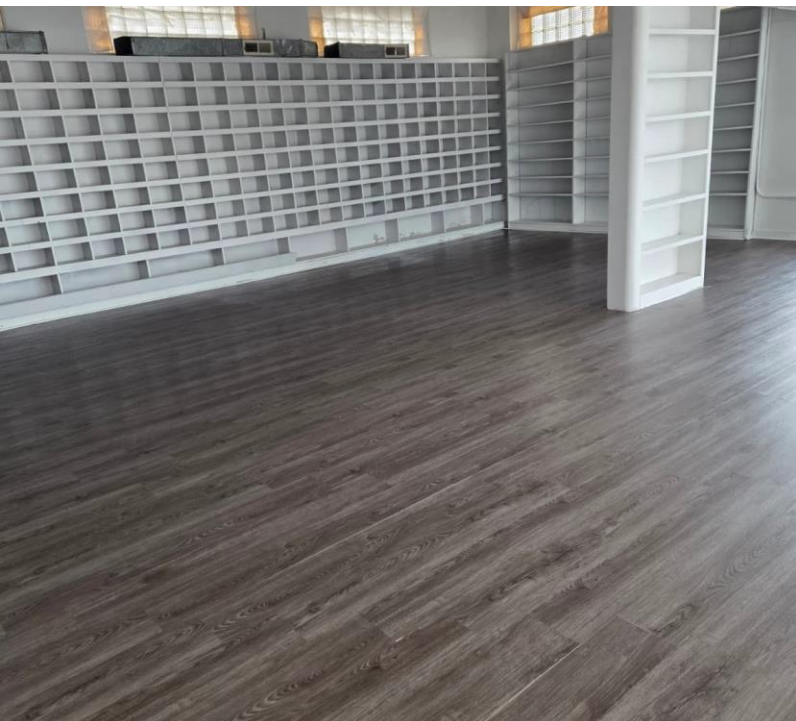
6,000 +/- SF LIGHT INDUSTRIAL BUILDING ON 0.241 +/- AC

LOCATED MINUTES FROM I-85

620 ELK ST ALEXANDER, ND 58831

FOR LEASE

INTERIOR PHOTOS



Mike Elliott
CEO | Managing Broker
701.713.6606
mike.elliott@erescompanies.com

ERES | erescompanies.com



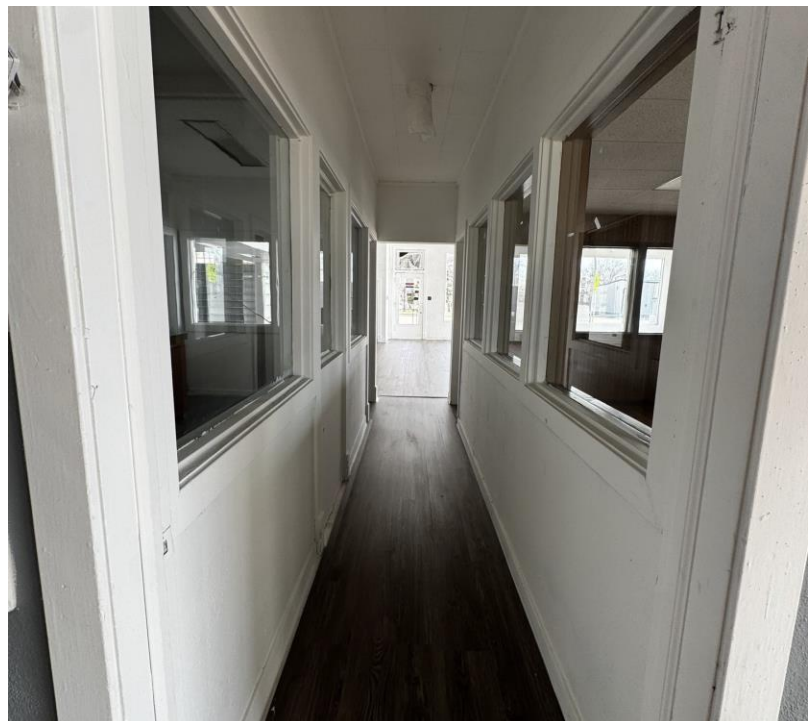
6,000 +/- SF LIGHT INDUSTRIAL BUILDING ON 0.241 +/- AC

LOCATED MINUTES FROM I-85

620 ELK ST ALEXANDER, ND 58831

FOR LEASE

OFFICE PHOTOS



Mike Elliott
CEO | Managing Broker
701.713.6606
mike.elliott@erescompanies.com

ERES | erescompanies.com



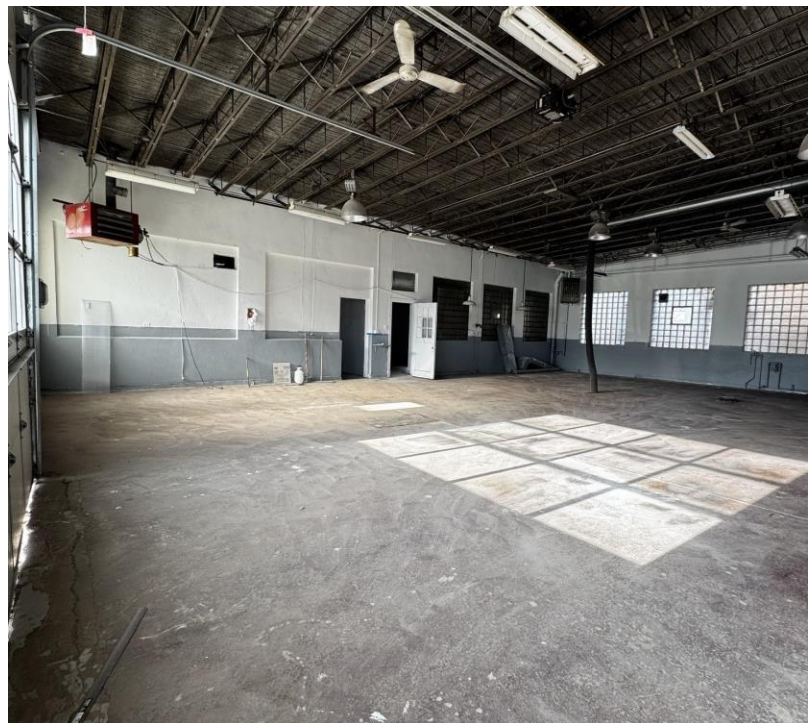
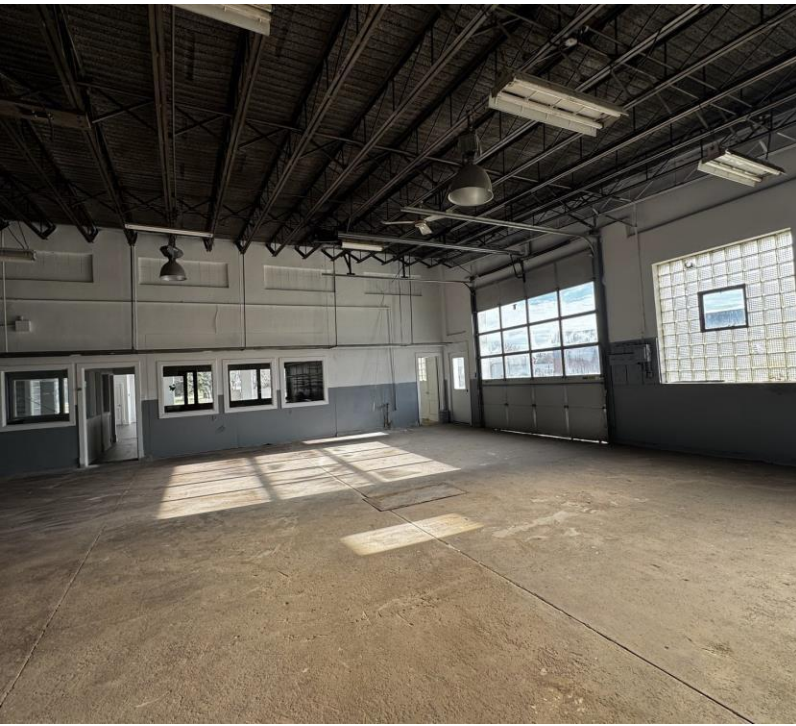
6,000 +/- SF LIGHT INDUSTRIAL BUILDING ON 0.241 +/- AC

LOCATED MINUTES FROM I-85

620 ELK ST ALEXANDER, ND 58831

FOR LEASE

WAREHOUSE PHOTOS



Mike Elliott
CEO | Managing Broker
701.713.6606
mike.elliott@erescompanies.com

ERES | erescompanies.com



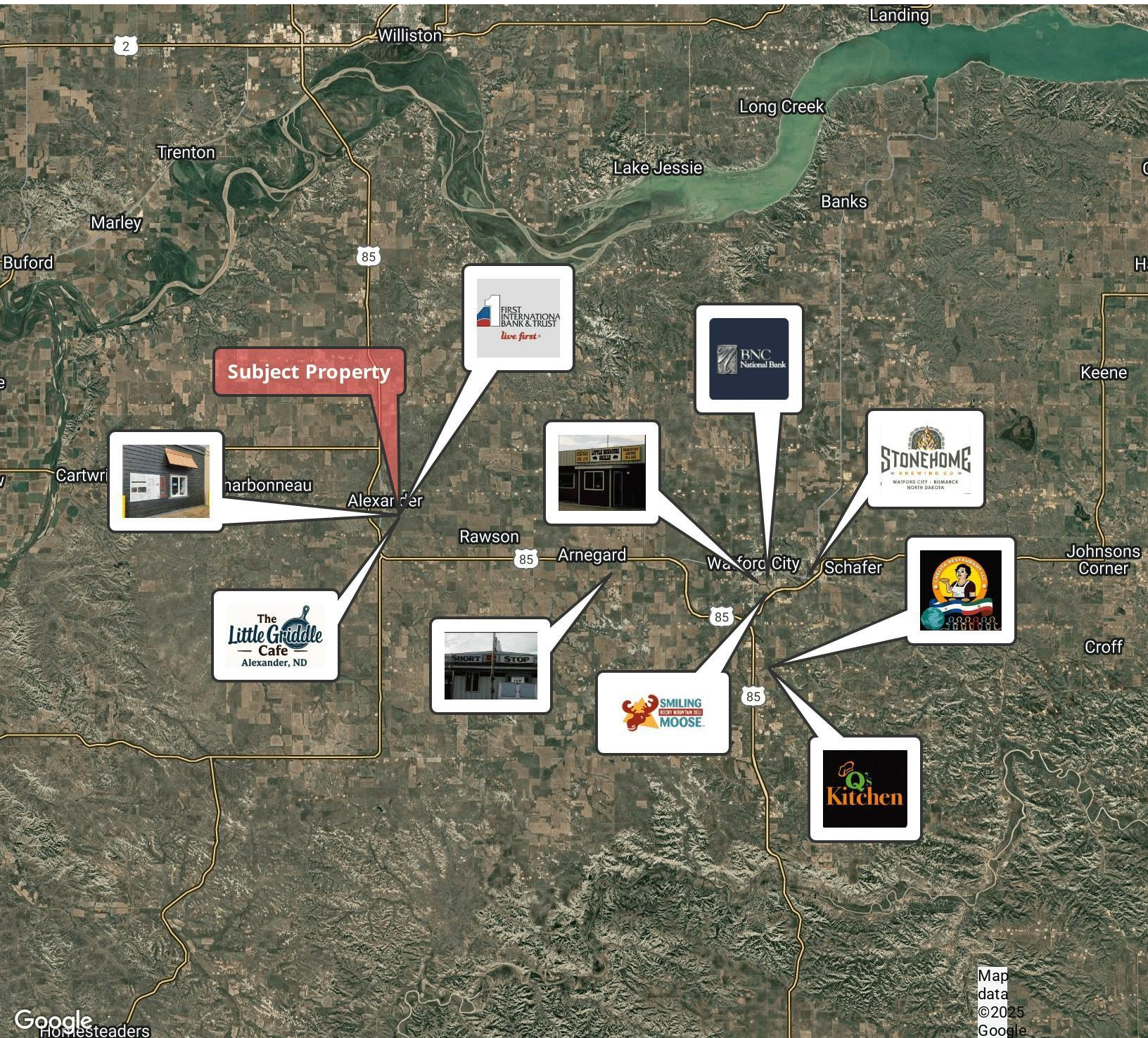
6,000 +/- SF LIGHT INDUSTRIAL BUILDING ON 0.241 +/- AC

LOCATED MINUTES FROM I-85

620 ELK ST ALEXANDER, ND 58831

FOR LEASE

RETAILER MAP



Mike Elliott
CEO | Managing Broker
701.713.6606
mike.elliott@erescompanies.com

ERES | erescompanies.com

