

OFFERING MEMORANDUM

5070 - 5074 Jericho Turnpike Commack, NY 11725

FOR LEASE- END CAP 4,212 SF



Commercial



EXECUTIVE SUMMARY

5070 - 5074 Jericho Turnpike Commack, NY 11725

Building Size:	9,611 SF	Lot Size:	0.75 Acres
Available SF (End Cap)	4,212 SF + 2,185 sf Basement	Parking:	46 Spaces
Lease Rate:	Upon Request	Zoning:	C6
Property Taxes:	\$53,695.29 (\$5.58 Per Sq Ft)	Occupancy:	Immediate
Property Insurance:	\$17,274.94 (\$1.79 Per Sq Ft)		

Property Overview

Position your business in one of Commack's premier retail corridors at 5070–5074 Jericho Turnpike, where a 4,212 SF end cap opportunity is now available for lease. Strategically located along heavily trafficked Jericho Turnpike, the property is surrounded by an exceptional mix of national and regional retailers including The Home Depot, Trader Joe's, TJ Maxx, Staples, Walgreens, Old Navy, Dollar Tree, AMC Theatres, and AT&T, driving consistent daily traffic and strong consumer draw to the area. The available end cap space offers outstanding visibility, strong signage presence, and convenient access with ample on-site parking. New ownership is currently implementing a series of capital improvements, including a renovated façade and upgraded parking lot, further enhancing the overall appearance and long-term positioning of the center. With immediate occupancy available, this opportunity is ideal for retail, showroom, fitness, or service-oriented tenants seeking a highly recognizable location in an affluent Long Island trade area.

Property Highlights

- Prime Jericho Turnpike Exposure
- Surrounded by National Retailers
- New Ownership with Planned Capital Improvements
- 46 Parking Spaces
- Immediate Occupancy
- Strong Demographics with Average Household Income Exceeding \$199,000 Within 5 Miles

Exclusively represented by:

Michael Gronenthal

Licensed Associate Real Estate Broker
516.439.6789 Email: michael.gronenthal@elliman.com

PROPERTY DETAILS

5070 - 5074 Jericho Turnpike Commack, NY 11725

Lease Rate

Upon Request

Location Information

Street Address	5070 - 5074 Jericho Turnpike
City, State, Zip	Commack, NY 11725
County	Suffolk
Township	Town of Huntington

Building Information

Building Size	9,611SF
Tenancy	Multiple
Ceiling Heights	12' Clear
Power	400 Amps
Separately Metered	Yes
Heating	Gas
Sprinklers	Fully

Property Information

Property Type	Retail
Zoning	C6
Lot Size	0.75 Acres
Curb Cuts	Three (3)
Parking	46 Spots
Sanitary	Septic
Traffic Light	Yes
Corner Property	Yes

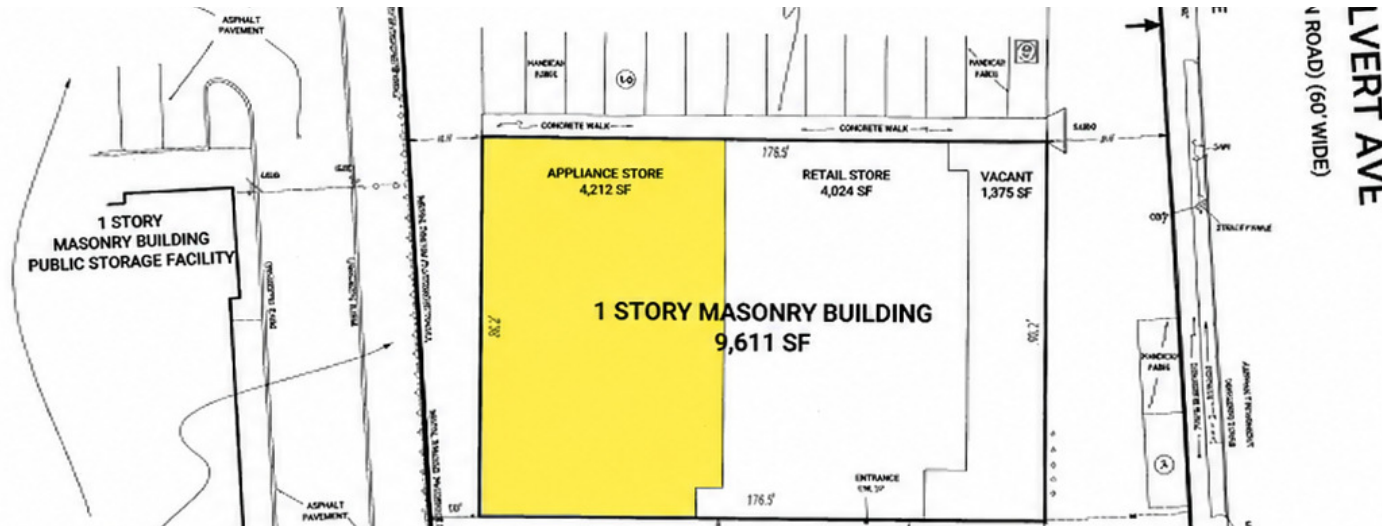
Exclusively represented by:

Michael Gronenthal

Licensed Associate Real Estate Broker
516.439.6789 Email: michael.gronenthal@elliman.com

LEASE SPACES

5070 - 5074 Jericho Turnpike Commack, NY 11725



Lease Information

Lease Type:	NNN	Lease Term:	Negotiable
Total Space:	4,212 SF + 2,185 SF Basement	Lease Rate:	Upon Request

Available Spaces

Suite	Tenant	Size (SF)	Lease Type	Description
5070 Jericho Tpke	Available	4,212 SF	NNN	Previous use- Appliance Store

Exclusively represented by:

Michael Gronenthal

Licensed Associate Real Estate Broker
516.439.6789 Email: michael.gronenthal@elliman.com



Commercial



Brilliant Cabinet

Windows

ROYAL Doers

5074



ADDITIONAL PHOTOS

5070 - 5074 Jericho Turnpike Commack, NY 11725



Exclusively represented by:

Michael Gronenthal

Licensed Associate Real Estate Broker

516.439.6789 Email: michael.gronenthal@elliman.com

RETAILER MAP

5070 - 5074 Jericho Turnpike Commack, NY 11725



Exclusively represented by:

Michael Gronenthal

Licensed Associate Real Estate Broker

516.439.6789 Email: michael.gronenthal@elliman.com

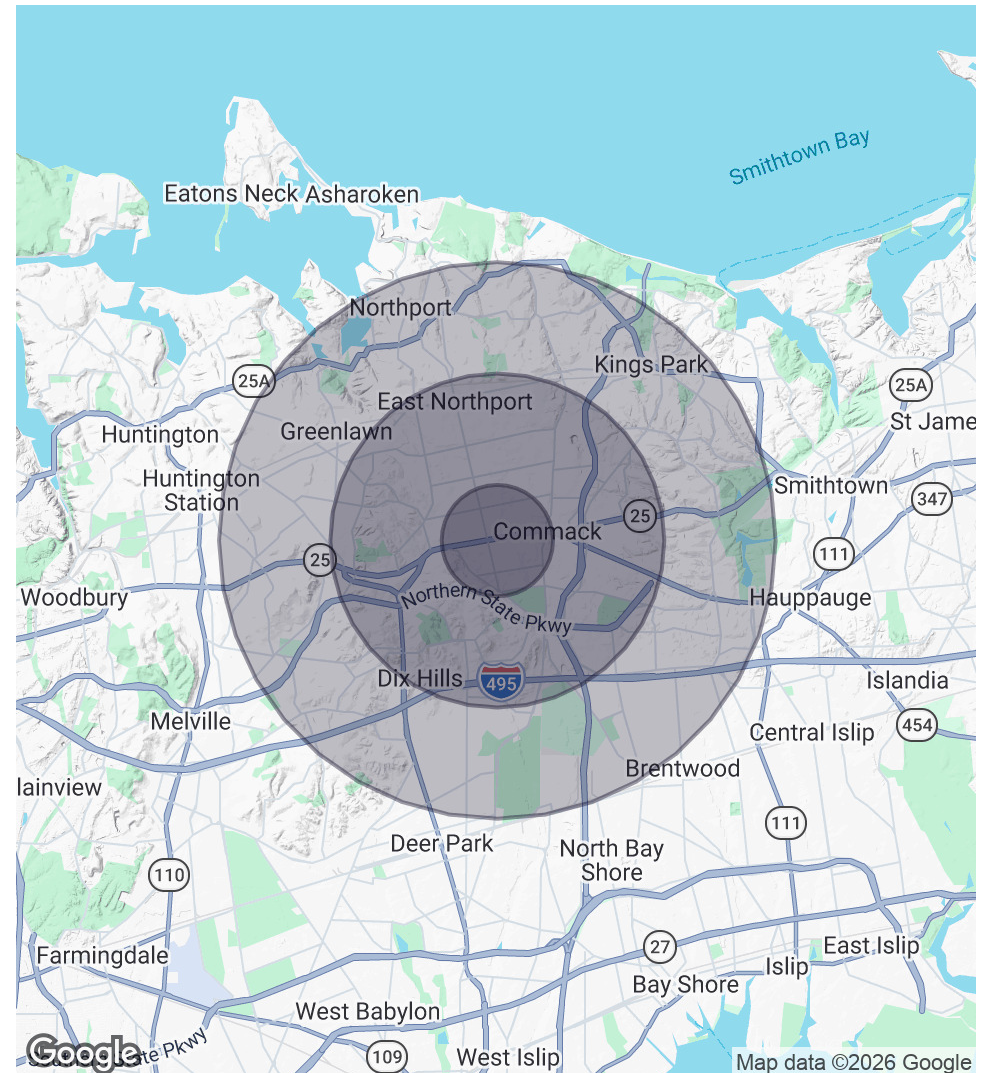
DEMOGRAPHICS MAP & REPORT

5070 - 5074 Jericho Turnpike Commack, NY 11725

Population	1 Mile	3 Miles	5 Miles
Total Population	10,467	73,629	176,627
Average Age	42.2	45.1	45.2
Average Age (Male)	40.9	42.9	43.8
Average Age (Female)	45.0	46.9	46.4

Households & Income	1 Mile	3 Miles	5 Miles
Total Households	3,401	24,472	60,190
# of Persons per HH	3.1	3.0	2.9
Average HH Income	\$194,018	\$201,138	\$199,806
Average House Value	\$649,324	\$721,294	\$712,024

2023 American Community Survey (ACS)



Exclusively represented by:

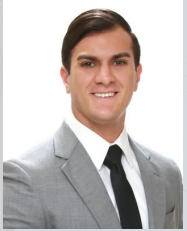
Michael Gronenthal

Licensed Associate Real Estate Broker

516.439.6789 Email: michael.gronenthal@elliman.com

5070 - 5074 Jericho Turnpike Commack, NY 11725

EXCLUSIVELY REPRESENTED BY:



Michael Gronenthal

Licensed Associate Real Estate Broker

516.439.6789

Email: michael.gronenthal@elliman.com



 **Douglas Elliman**
Commercial

550 Smithtown Bypass Suite 117

Smithtown, NY 11787

631.858.2405

ellimancommercial.com

THE PROPERTY CONTAINED WITHIN THIS DOCUMENT IS BEING EXCLUSIVELY REPRESENTED BY DOUGLAS ELLIMAN REAL ESTATE COMMERCIAL DIVISION, 550 SMITHTOWN BYPASS STE. 117 SMITHTOWN, NY 11787 631.858.2405
© 2023 DOUGLAS ELLIMAN COMMERCIAL OF LI, LLC. ALL MATERIAL PRESENTED HEREIN IS INTENDED FOR INFORMATION PURPOSES ONLY. WHILE THIS INFORMATION IS BELIEVED TO BE CORRECT, IT IS REPRESENTED SUBJECT TO ERRORS, OMISSIONS, CHANGES OR WITHDRAWAL WITHOUT NOTICE. ALL PROPERTY INFORMATION, INCLUDING, BUT NOT LIMITED TO SQUARE FOOTAGE, ROOM COUNT, ZONING IN THE LISTING SHOULD BE VERIFIED BY YOUR OWN ATTORNEY, ARCHITECT OR ZONING EXPERT. IF YOUR PROPERTY IS CURRENTLY LISTED WITH ANOTHER REAL ESTATE BROKER, PLEASE DISREGARD THIS OFFER. IT IS NOT OUR INTENTION TO SOLICIT THE OFFERINGS OF OTHER REAL ESTATE BROKERS. WE COOPERATE WITH THEM FULLY. EQUAL HOUSING OPPORTUNITY.



We Are Commercial Real Estate

550 Smithtown Bypass Suite 117
Smithtown, NY 11787
631.858.2405
ellimancommercial.com

Commercial real estate involves more than just property listings. To get the most effective results, you need to partner with a company that has a full complement of services and an in-depth team of professionals to help with all your needs. Douglas Elliman's team of commercial real estate experts is committed to unrivaled performance standards when working with tenants, investors, purchasers and owners. We represent all major property types including office, industrial, retail, apartment and land. We treat each assignment with commitment and focus, from a single transaction in a local market to national and multi-market assignments. We help negotiate contracts, coordinate construction and provide both property management as well as ongoing advisory service to satisfy your changing real estate needs. Our breadth of market knowledge, unprecedented network and use of innovative technology extend to all types of property transactions. For information on our services please contact us today.