



HOULIHAN LAWRENCE
COMMERCIAL

887 Crotona Park N

Bronx, NY 10460

Exclusively Represented By:

Darren Gordon

Real Estate Salesperson

917 596 4789

DarrenGordon@houlihanlawrence.com

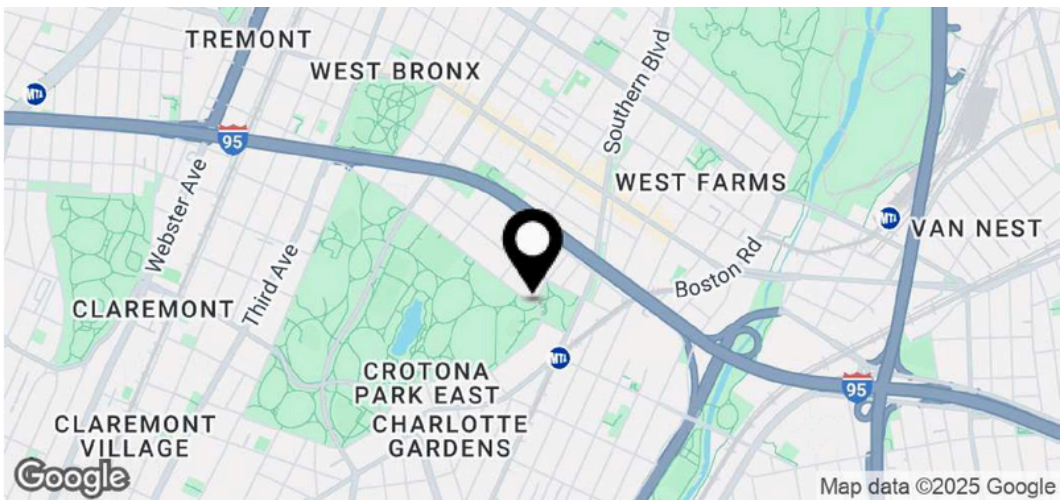
SPECIAL PURPOSE SPACE FOR LEASE

887 Crotona Park N

Bronx, NY 10460

FOR LEASE

Executive Summary



Offering Summary

Lease Rate	\$29.00 SF/yr
Lease Type	MG + Utilities
Square Feet	3,349 Ground Floor + 1,162 Basement

Property Overview

Houlihan Lawrence Commercial proudly presents this ±3,349 square foot ground- floor commercial space with an additional ±1,162 square foot basement at 887 Crotona Park Avenue in the Bronx. Formerly licensed and operated as a child care center, the space offers a thoughtfully designed, turnkey layout ideal for educational, medical, or nonprofit users. It includes three spacious classrooms, each with its own in-room restroom, a full commercial-grade kitchen, and a private administrative suite featuring three offices and a dedicated staff bathroom. The clean, functional basement provides ample storage or potential for supplemental program space. With high ceilings, strong natural light, and infrastructure already in place, this opportunity delivers exceptional value for mission-driven tenants seeking a high-utility, centrally located facility.

Houlihan Lawrence
800 WestchesterAve.Ste. N517
Rye Brook,NY10573



887 Crotona Park N

Bronx, NY 10460

FOR LEASE

Complete Highlights



Location Information

Street Address	887 Crotona Park N
City, State, Zip	Bronx, NY 10460

Building Information

Number of Floors	5
Year Built	1922
Number of Buildings	1

Property Highlights

- ±3,349 SF ground floor plus ±1,162 SF basement
- Three classrooms with individual in-room restrooms
- Full commercial-grade kitchen
- Administrative suite with 3 private offices + private bathroom
- High ceilings and large windows throughout
- Clean, dry basement suitable for storage or additional use
- Move-in ready layout for child care, education, medical, or nonprofit use
- Well-maintained and functional infrastructure

Houlihan Lawrence
800 Westchester Ave. Ste. N517
Rye Brook, NY 10573

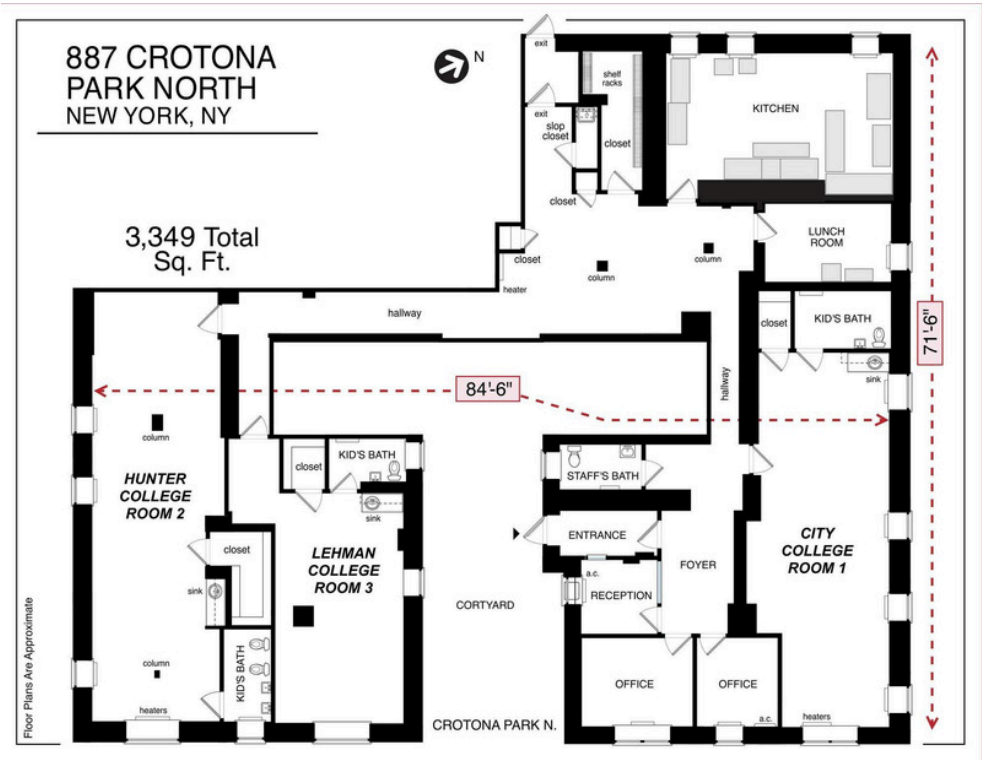


887 Crotona Park N

Bronx, NY 10460

FOR LEASE

Lease Spaces



Available Spaces

Size SF	Lease Type	Lease Rate	Video
3,349 SF	MG + Utilities	\$29.00 SF/yr	View Here

Houlihan Lawrence
800 Westchester Ave. Ste. N517
Rye Brook, NY 10573

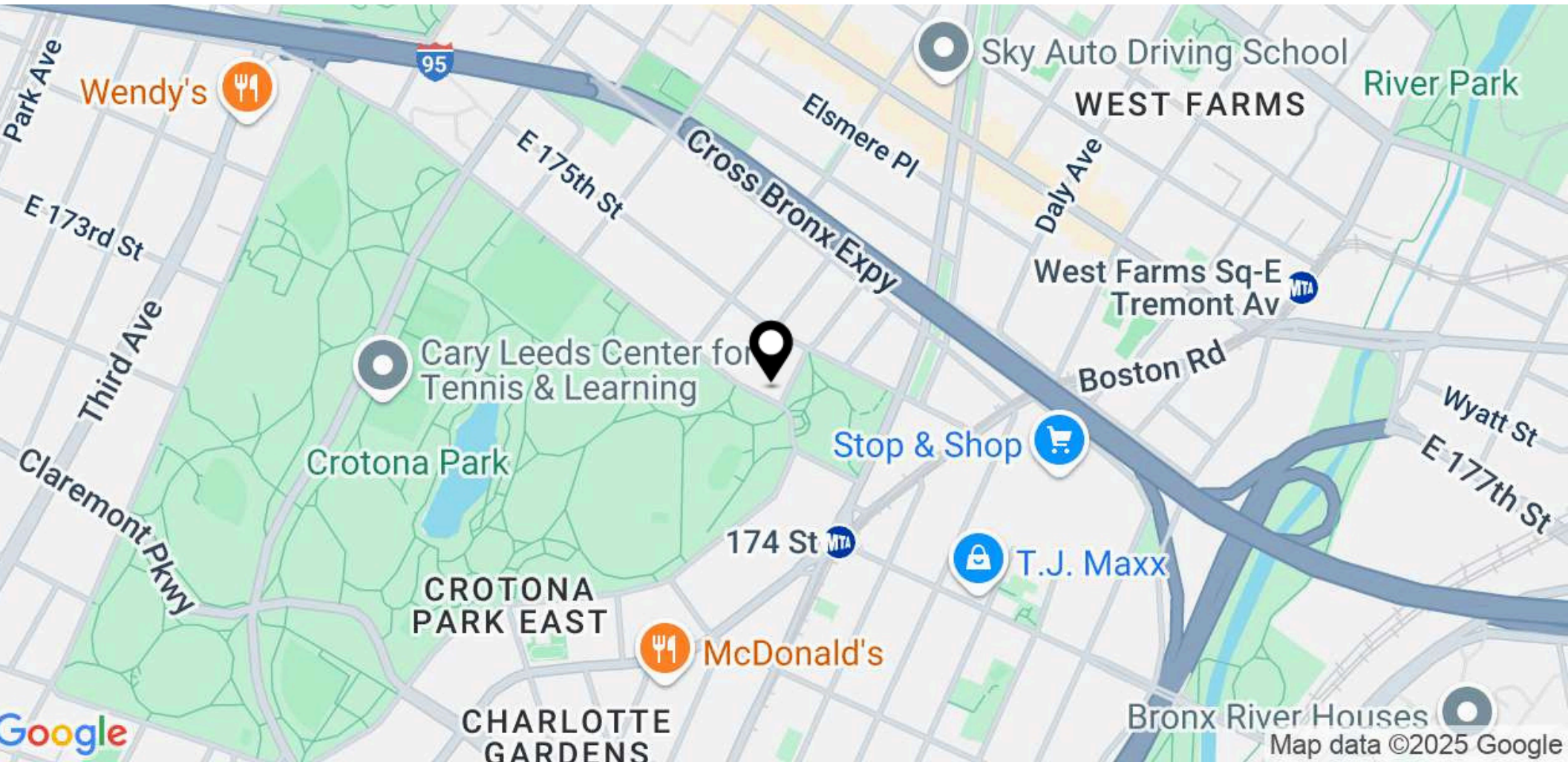


887 Crotona Park N

Bronx, NY 10460

FOR LEASE

Location Map



Houlihan Lawrence

800 Westchester Ave. Ste. N517
Rye Brook, NY 10573



HOULIHAN LAWRENCE
COMMERCIAL

887 Crotona Park N

Bronx, NY 10460

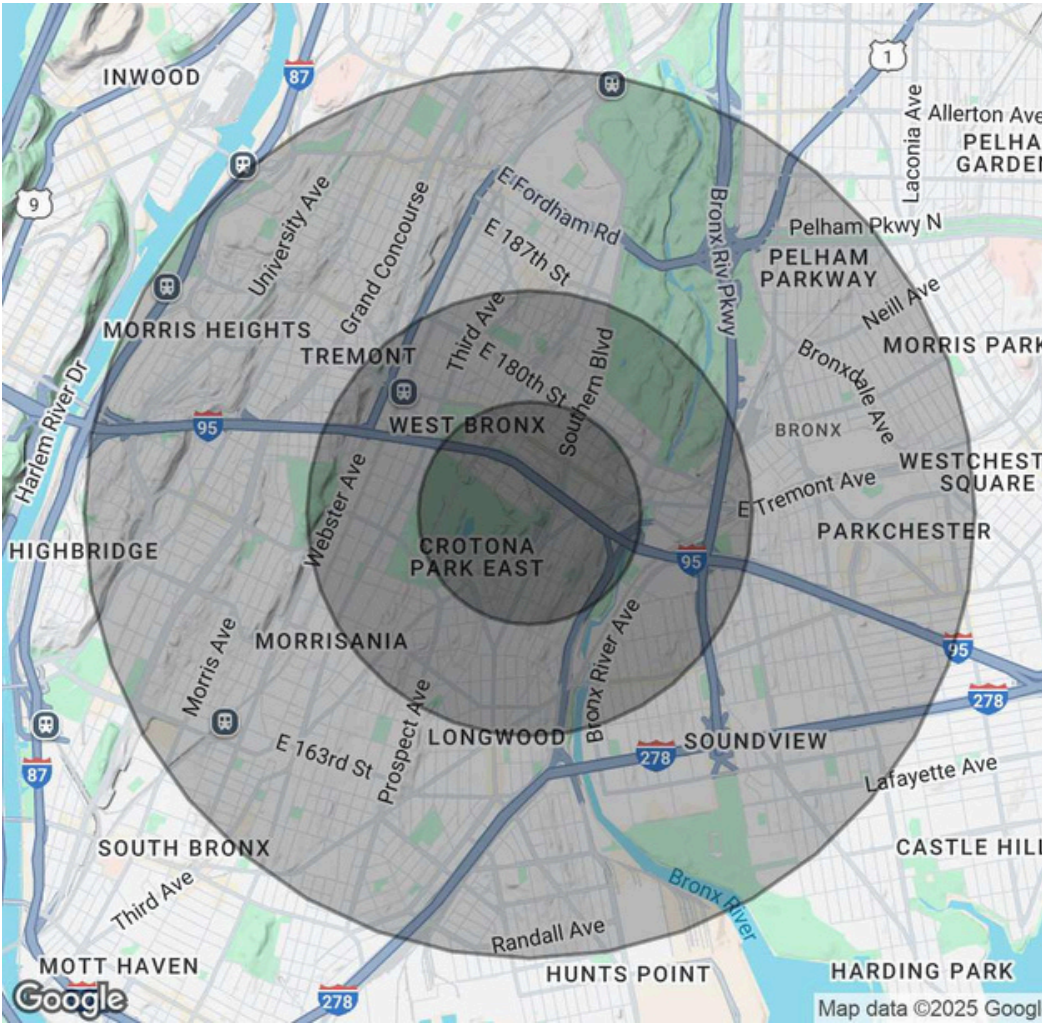
FOR LEASE

Demographics Map & Report

Population	0.5 Miles	1 Mile	2 Miles
Total Population	35,842	159,087	697,680
Average Age	37	36	37
Average Age (Male)	35	35	36
Average Age (Female)	38	37	38

Households & Income	0.5 Miles	1 Mile	2 Miles
Total Households	13,254	55,353	241,176
# of Persons per HH	2.7	2.9	2.9
Average HH Income	\$47,872	\$53,530	\$57,586
Average House Value	\$571,355	\$556,403	\$545,923

Demographics data derived from AlphaMap



Houlihan Lawrence
800 Westchester Ave. Ste. N517
Rye Brook, NY 10573

