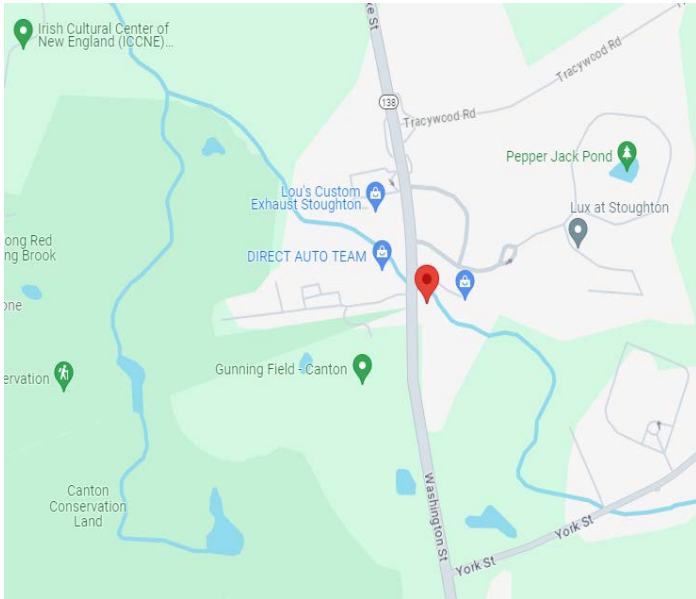


FOR SALE

1200 TURNPIKE STREET - CANTON, MA



DONAHUE
ASSOCIATES

Commercial & Industrial Real Estate
Tel: 508.588.1717
sd@donahueassociates.com

\$995,000.00
4,800 SF Total

Rt. 138 on Stoughton Line
Great Traffic + Visibility

General Business District (Currently Office Space)

Stoughton Water - Canton Sewer
Assessed @ \$681.800
Taxes: \$14,366.46 +/-

.34 Acres in Canton ➔ Total Acres: .87
.33 Acres in Stoughton

Some Wetlands

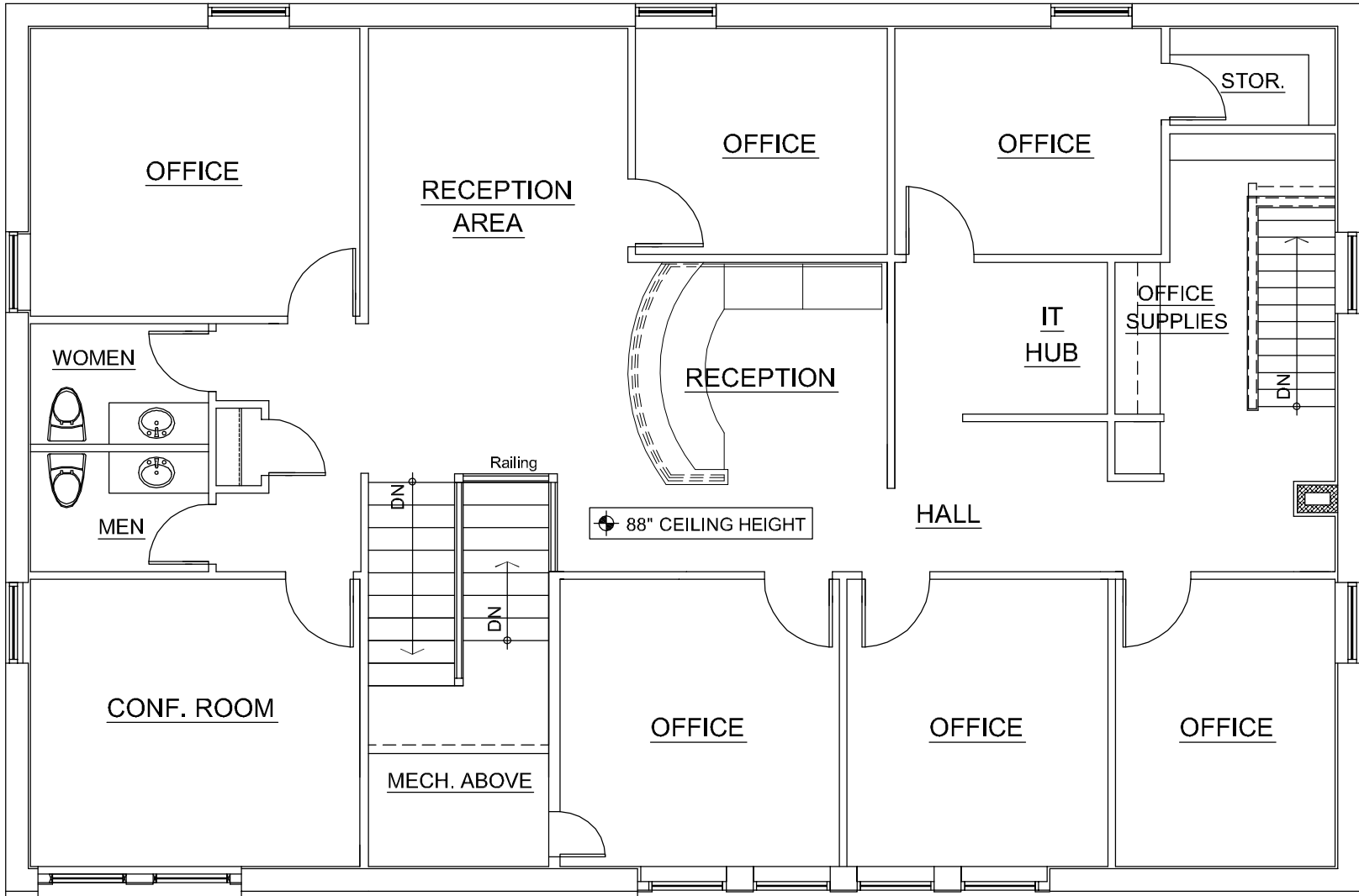
20 + Parking Spaces

New Roof / Newer Remodeled Lower Level
2 Zone Heat - 2 Gas Meters - 2 Electric Meters
Poured Concrete Floors Upstairs
2001 Total Demo+Refinish

**Lower Level Could Be Separate Tenant w/ own
entrance**

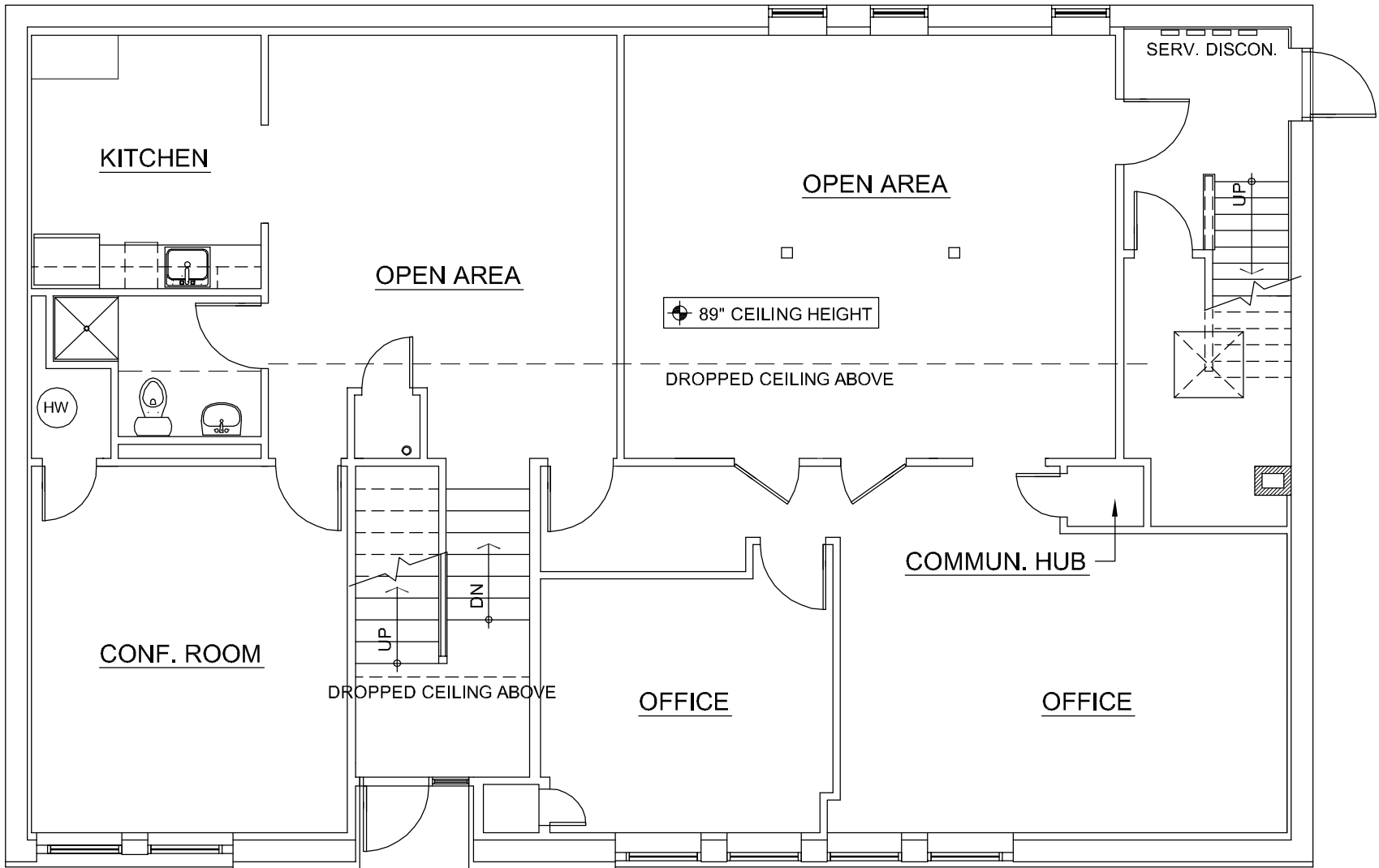
No warranty or representation, express or implied, is made as to the accuracy of the information contained herein, and the same is submitted subject to errors, omissions, change of price, rental or other conditions, withdrawal without notice.

www.donahueassociates.com



UPPER LEVEL - 1200 TURNPIKE STREET

<p>Graphic Scale</p> <p>0 1' 3' 6' 12' 24'</p>	<p>August 2024</p>
---	--------------------



LOWER LEVEL - 1200 TURNPIKE STREET

