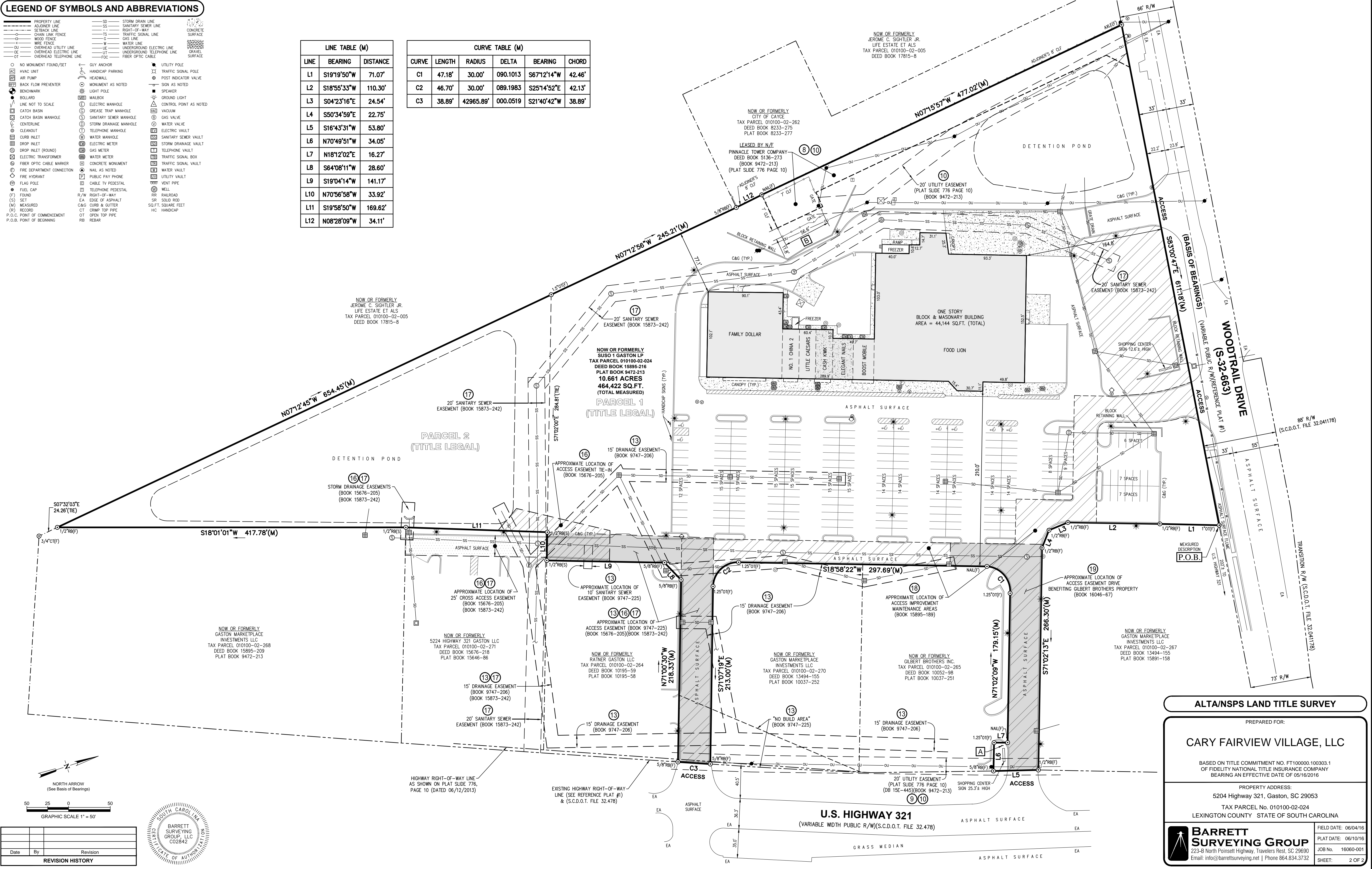


LEGEND OF SYMBOLS AND ABBREVIATIONS

- PROPERTY LINE
- - - ADJONER LINE
- - - SETBACK LINE
- - - CHAIN LINK FENCE
- - - WOOD FENCE
- - - WIRE FENCE
- - - OVERHEAD UTILITY LINE
- - - OVERHEAD ELECTRIC LINE
- - - OVERHEAD TELEPHONE LINE
- NO MONUMENT FOUND/SET
- HVAC UNIT
- AIR PUMP
- BACK FLOW PREVENTER
- BENCHMARK
- BOLLARD
- LINE NOT TO SCALE
- CATCH BASIN
- CATCH BASIN MANHOLE
- CENTERLINE
- CLEANOUT
- CURB INLET
- DROP INLET
- DROP INLET (ROUND)
- ELECTRIC TRANSFORMER
- FIBER OPTIC CABLE MARKER
- FIRE DEPARTMENT CONNECTION
- FIRE HYDRANT
- FLAG POLE
- FUEL CAP
- (F) FOUND
- (S) SET
- (M) MEASURED
- (R) RECORD
- P.O.C. POINT OF COMMENCEMENT
- P.O.B. POINT OF BEGINNING
- STORM DRAIN LINE
- SANITARY SEWER LINE
- RIGHT-OF-WAY
- TRAFFIC SIGNAL LINE
- GAS LINE
- WATER LINE
- UNDERGROUND ELECTRIC LINE
- UNDERGROUND TELEPHONE LINE
- FIBER OPTIC CABLE
- UTILITY POLE
- TRAFFIC SIGNAL POLE
- POST INDICATOR VALVE
- SIGN AS NOTED
- SPEAKER
- GROUND LIGHT
- CONTROL POINT AS NOTED
- VACUUM
- GAS VALVE
- WATER VALVE
- ELECTRIC VAULT
- SANITARY SEWER VAULT
- STORM DRAINAGE VAULT
- TELEPHONE VAULT
- TRAFFIC SIGNAL BOX
- CONCRETE MONUMENT
- WATER VAULT
- UTILITY VAULT
- VENT PIPE
- WELL
- RR RAILROAD
- SR SOLID ROAD
- C&G CURB & GUTTER
- SO.FT. SQUARE FEET
- HC HANDICAP

LINE	BEARING	DISTANCE
L1	S19°19'50"W	71.07'
L2	S18°55'33"W	110.30'
L3	S04°23'16"E	24.54'
L4	S50°34'59"E	22.75'
L5	S16°43'31"W	53.80'
L6	N70°49'51"W	34.05'
L7	N18°12'02"E	16.27'
L8	S64°08'11"W	28.60'
L9	S19°04'14"W	141.17'
L10	N70°56'58"W	33.92'
L11	S19°58'50"W	169.62'
L12	N08°28'09"W	34.11'

CURVE	LENGTH	RADIUS	DELTA	BEARING	CHORD
C1	47.18'	30.00'	090.1013	S67°12'14"W	42.46'
C2	46.70'	30.00'	089.1983	S25°14'52"E	42.13'
C3	38.89'	42965.89'	000.0519	S21°40'42"W	38.89'

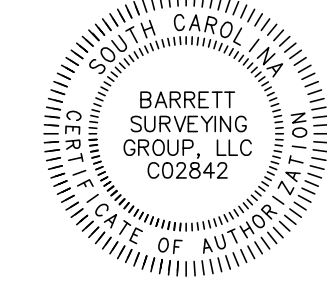


NORTH ARROW
(See Basis of Bearings)

50 25 0 50
GRAPHIC SCALE 1" = 50'

Date	By	Revision

REVISION HISTORY



ALTA/NSPS LAND TITLE SURVEY

PREPARED FOR:
CARY FAIRVIEW VILLAGE, LLC

BASED ON TITLE COMMITMENT NO. FT100000.100303.1
OF FIDELITY NATIONAL TITLE INSURANCE COMPANY
BEARING AN EFFECTIVE DATE OF 05/16/2016

PROPERTY ADDRESS:
5204 Highway 321, Gaston, SC 29053

TAX PARCEL No. 010100-02-024
LEXINGTON COUNTY STATE OF SOUTH CAROLINA

BARRETT SURVEYING GROUP
223-B North Pointsett Highway, Travelers Rest, SC 29690
Email: info@barrettsurveying.net | Phone 864.834.3732

FIELD DATE: 06/04/16
PLAT DATE: 06/10/16
JOB No. 16060-001
SHEET: 2 OF 2