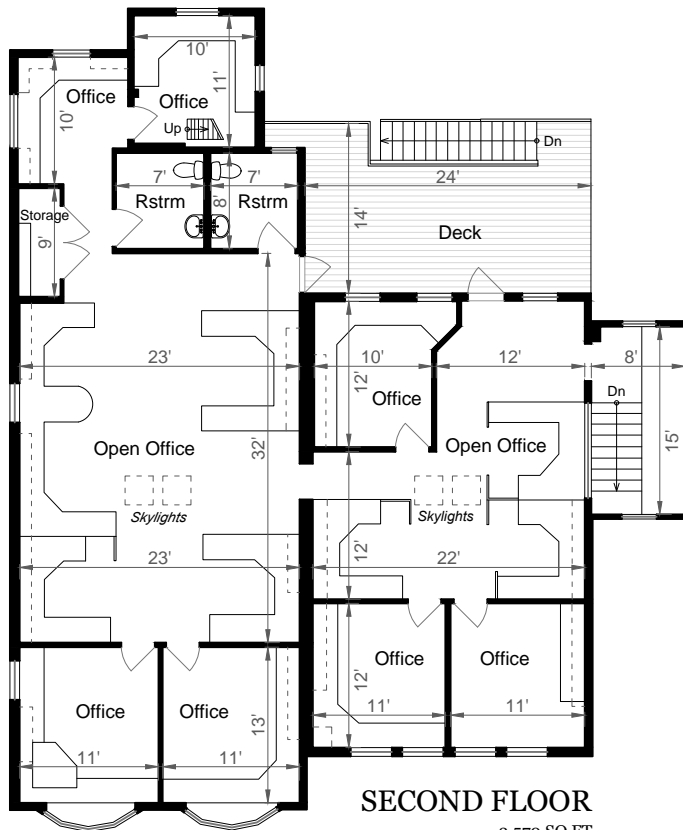


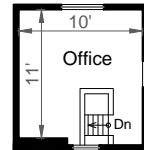
637 MAIN STREET | HALF MOON BAY, CA 94019



**FIRST FLOOR**  
3,985 SQ FT



**SECOND FLOOR**  
2,570 SQ FT



**THIRD FLOOR**  
125 SQ FT



**SHED**  
170 SQ FT

**Estimated Total Square Footage: 6,680 SQ FT**  
*Calculated from outside face of exterior walls.*

Plus 170 SQ FT Shed

