

FOR SALE

2029 W. 16TH STREET

Long Beach, CA 90813



COLDWELL BANKER
COMMERCIAL | BLAIR



OFFERING SUMMARY

- Price: \$1,400,000 (\$297.87 PSF)
- Building Size: 4,700 SF
- No. of Units: 2
- Year Built: 1956
- 1 Parking Stall

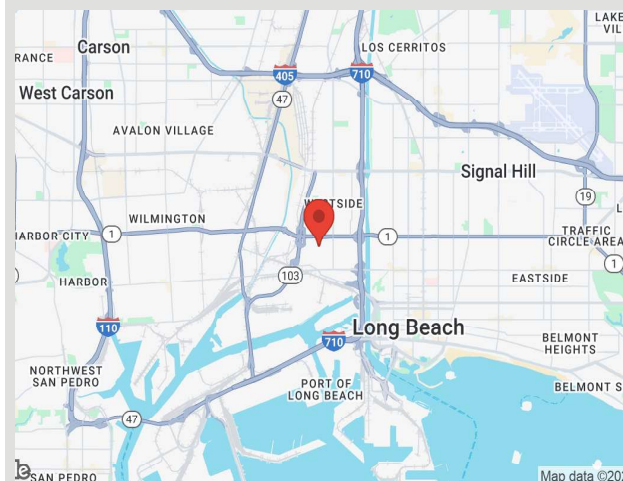
PROPERTY HIGHLIGHTS

- 100% Leased
- Below Market Rents
- Gated, Secure Parking
- Immediate Access to 710 Freeway
- Month to Month Lease
- SBA Financing Available

PROPERTY DESCRIPTION

The property is located in the highly desirable industrial area of Long Beach and is a rare purchase opportunity due to the lack of properties that come onto the market in this location. This well maintained property is great for an owner user.

LOCATION MAP



FOR MORE INFORMATION CONTACT:

GEORGE BUSTAMANTE

Principal
C: 714-856-7017
O: 562-548-7399
GBustamante@cbcbclair.com
LIC# 01484265

STEVE WARSHAUER

Principal
C: 562-397-9520
O: 562-548-7419
SteveW@cbcbclair.com
LIC# 00499477

FOR SALE

2029 W. 16TH STREET

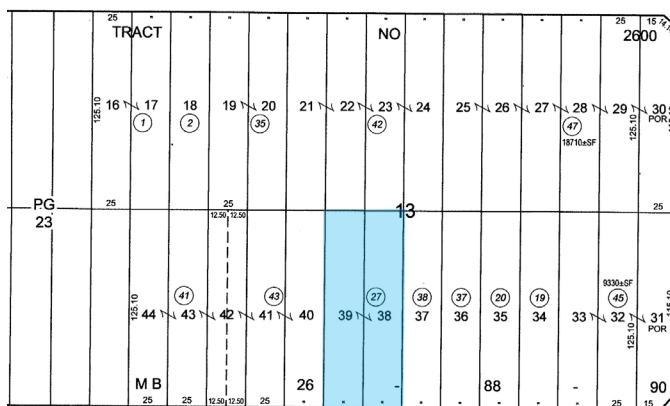
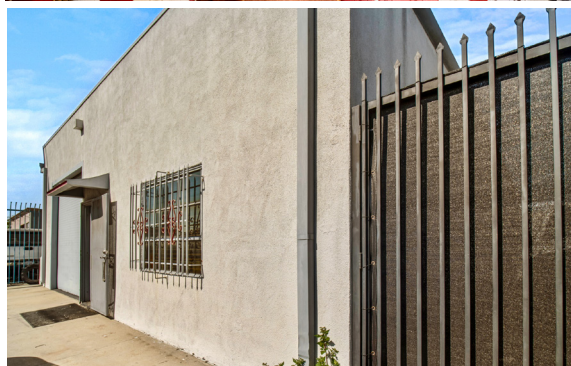
Long Beach, CA 90813

PROPERTY LOCATION

Located on 16th Street and one block away from the Harbor (110) Freeway. Close vicinity to the Ports of Los Angeles and Long Beach, retail amenities and the beach communities.



PARCEL MAP - APN: 7429-024-027



16TH STREET

HAYES AVENUE

FOR MORE INFORMATION CONTACT:

GEORGE BUSTAMANTE

Principal

C: 714-856-7017

O: 562-548-7399

GBustamante@cbcblair.com

LIC# 01484265

STEVE WARSHAUER

Principal

C: 562-397-9520

O: 562-548-7419

SteveW@cbcblair.com

LIC# 00499477



**COLDWELL BANKER
COMMERCIAL
BLAIR**