

## Criteria Used for Analysis

**Median Household Income**  
**\$71,477**

**38.7**

**Total Population**  
**36,493**

**1st Dominant Segment**  
**Middleburg**

## Consumer Segmentation

<p>Life Mode</p> <p><b>What are the people like that live in this area?</b></p>	<p><b>Family Landscapes</b></p> <p>Successful young families in their first homes</p>	<p>Urbanization</p> <p><b>Where do people like this usually live?</b></p>	<p><b>Semirural</b></p> <p>The most affordable housing—in smaller towns and communities located throughout the country</p>
---	---	---	--

## Top Tapestry Segments

	Middleburg	Comfortable Empty Nesters	Manufacturing Traditions	Green Acres	Rooted Rural
<b>% of Households</b>	9,899 (71.4%)	1,444 (10.4%)	1,126 (8.1%)	1,096 (7.9%)	215 (1.5%)
<b>% of Christian County</b>	16,301 (47.4%)	1,866 (5.4%)	1,126 (3.3%)	4,831 (14.1%)	359 (1.0%)
<b>Lifestyle Group</b>	Family Landscapes	GenXurban	GenXurban	Cozy Country Living	Rustic Outposts
<b>Urbanization Group</b>	Semirural	Suburban Periphery	Urban Periphery	Rural	Rural
<b>Residence Type</b>	Single Family	Single Family	Single Family	Single Family	Single Family ; Mobile Homes
<b>Household Type</b>	Married Couples	Married Couples	Married Couples	Married Couples	Married Couples
<b>Average Household Size</b>	2.7	2.5	2.43	2.66	2.42
<b>Median Age</b>	37	49	39.8	44.8	46.1
<b>Diversity Index</b>	58.6	45.2	59.4	36.4	34.4
<b>Median Household Income</b>	\$76,600	\$89,300	\$62,200	\$94,600	\$54,000
<b>Median Net Worth</b>	\$177,100	\$363,500	\$152,400	\$347,000	\$155,300
<b>Median Home Value</b>	\$239,300	\$262,100	\$165,100	\$300,900	\$157,100
<b>Homeownership</b>	75.7 %	87.7 %	72.1 %	87.9 %	82 %
<b>Employment</b>	Professional or Mgmt/Bus/Financial	Professional or Mgmt/Bus/Financial	Professional or Services	Professional or Mgmt/Bus/Financial	Professional or Services
<b>Education</b>	High School Diploma	Bachelor's Degree	High School Diploma	High School Diploma	High School Diploma
<b>Preferred Activities</b>	Spending priorities also focus on family . Enjoy hunting, fishing, bowling and baseball.	Play golf, ski and work out regularly . Home maintenance a priority among these homeowners.	Value time spent at home . Watching television and gaming are common pastimes.	Pursue physical fitness vigorously, . Active in communities and social organizations.	Do-it-yourself mentality . Go hunting, fishing.
<b>Financial</b>	Carry some debt; invest for future	Portfolio includes stocks, CODs, mutual funds and real estate	Budget aware shoppers	Comfortable with debt, and investments.	Avoid using the Internet for financial transactions.
<b>Media</b>	TV and magazines provide entertainment and information	Listen to sports radio; watch sports on TV	Read newspapers, especially Sunday editions	Provided by satellite service, radio and television	Listen to faith-based radio, gospel music
<b>Vehicle</b>	Like to drive trucks, SUVs, or motorcycles	Own 1-2 vehicles	Own 2-3 vehicles	Late model trucks SUVs, ATVs and motorcycles	Own, maintain cars, ATVs

## Nixa, MO 65714: Economic Comparison

### Average Household Income

This chart shows the average household income in an area, compared with other geographies.

Data Source: U.S. Census American Community Survey via Esri, 2022

Update Frequency: Annually

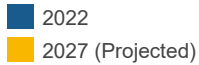


### Median Household Income

This chart shows the median household income in an area, compared with other geographies.

Data Source: U.S. Census American Community Survey via Esri, 2022

Update Frequency: Annually



### Per Capita Income

This chart shows per capita income in an area, compared with other geographies.

Data Source: U.S. Census American Community Survey via Esri, 2022

Update Frequency: Annually



### Average Disposable Income

This chart shows the average disposable income in an area, compared with other geographies.

Data Source: U.S. Census American Community Survey via Esri, 2022

Update Frequency: Annually



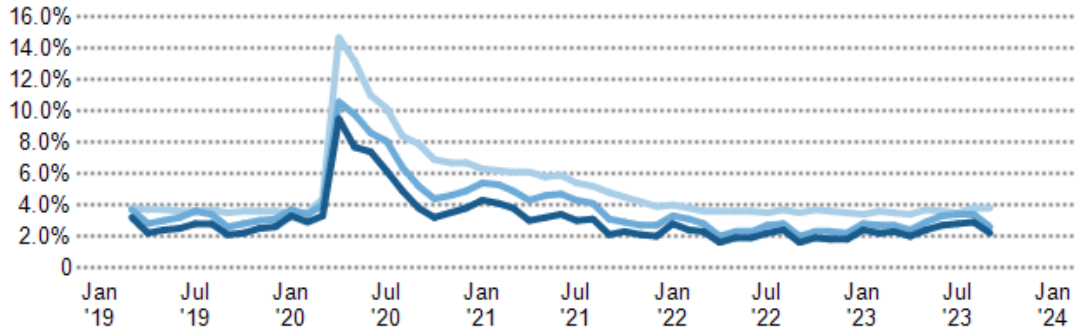
## Unemployment Rate

This chart shows the unemployment trend in an area, compared with other geographies.

Data Source: Bureau of Labor Statistics via PolicyMap

Update Frequency: Monthly

- Christian County
- Missouri
- USA



## Employment Count by Industry

This chart shows industries in an area and the number of people employed in each category.

Data Source: Bureau of Labor Statistics via Esri, 2022

Update Frequency: Annually

