



**SIGNATURE  
ASSOCIATES**  
KNOW SIGNATURE | KNOW RESULTS

# FOR LEASE

48325-48679 ALPHA DRIVE | WIXOM, MICHIGAN



## PROPERTY FEATURES

- Up to 33,588 contiguous square feet available
  - 48561 Alpha Dr.: Suite 120 – 20,196 sf
  - 48561 Alpha Dr.: Suite 300 – 13,392 sf
  - 48679 Alpha Dr.: Suite 100 – 4,617 sf
  - 48679 Alpha Dr.: Suite 110W – 4,819 sf
- Flexible designs allows for a variety of uses
- Situated in a beautiful campus-like setting with an abundance of parking close to each suite
- Immediately adjacent to major expressways
- Area amenities include hotels, banks, restaurants and gas stations
- Lease Rate: \$8.25 - \$12.50/sq. ft. NNN



For more information, please contact:

**DAVE GREEN**  
(248) 948 4184  
dgreen@signatureassociates.com

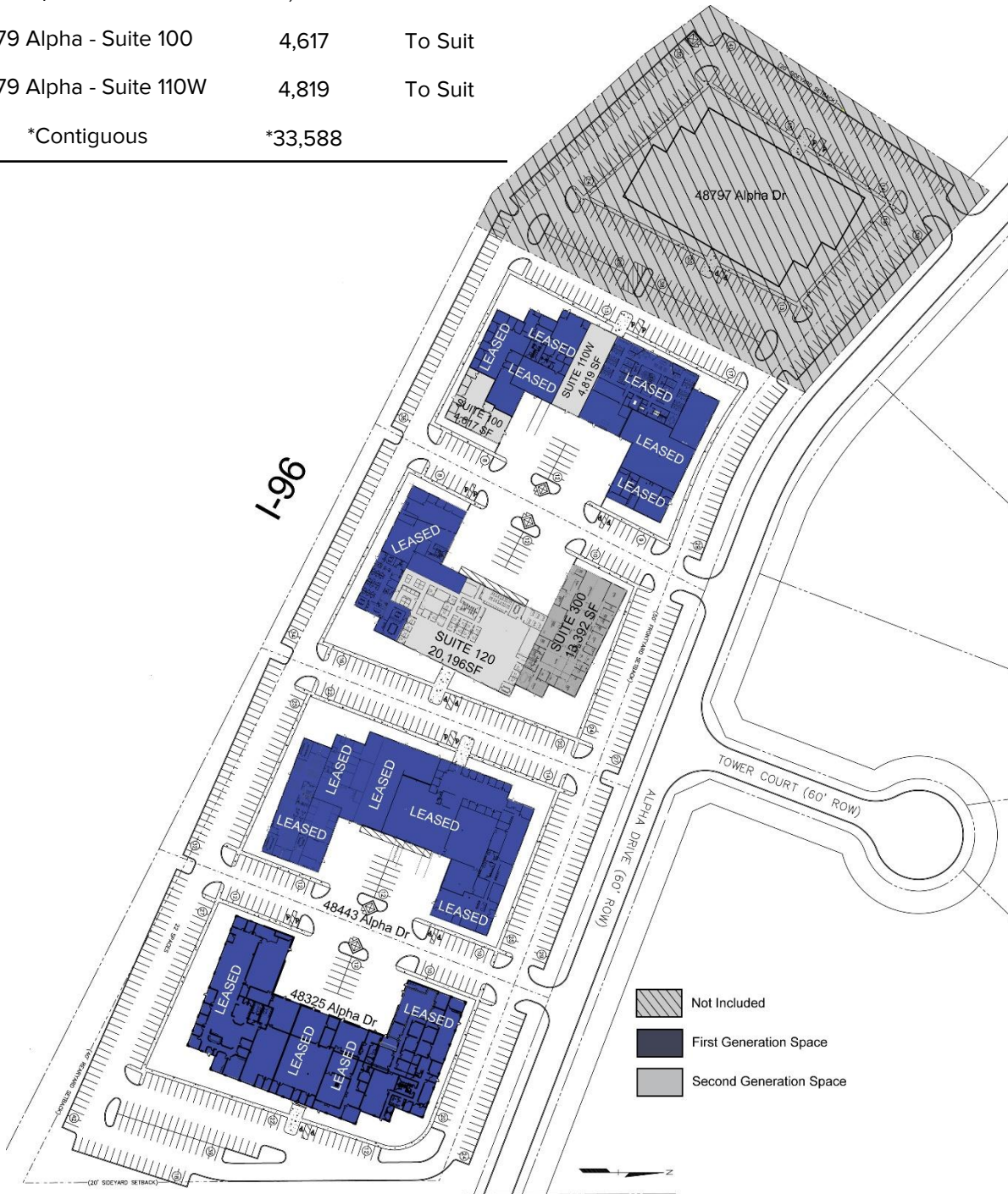
**SIGNATURE ASSOCIATES**  
One Towne Square, Suite 1200  
Southfield, MI 48076  
www.signatureassociates.com

# 48325 - 48679 Alpha Drive - Wixom, Michigan

## Hi-Tech for Lease

Up to 33,588  
Square Feet  
AVAILABLE

Address	Available Sq. Ft.	Office Sq. Ft.
48561 Alpha - Suite 120	20,196*	To Suit
48561 Alpha - Suite 300	13,392*	To Suit
48679 Alpha - Suite 100	4,617	To Suit
48679 Alpha - Suite 110W	4,819	To Suit
*Contiguous	*33,588	



For more information, please contact:

**DAVE GREEN**  
(248) 948 4184

dgreen@signatureassociates.com

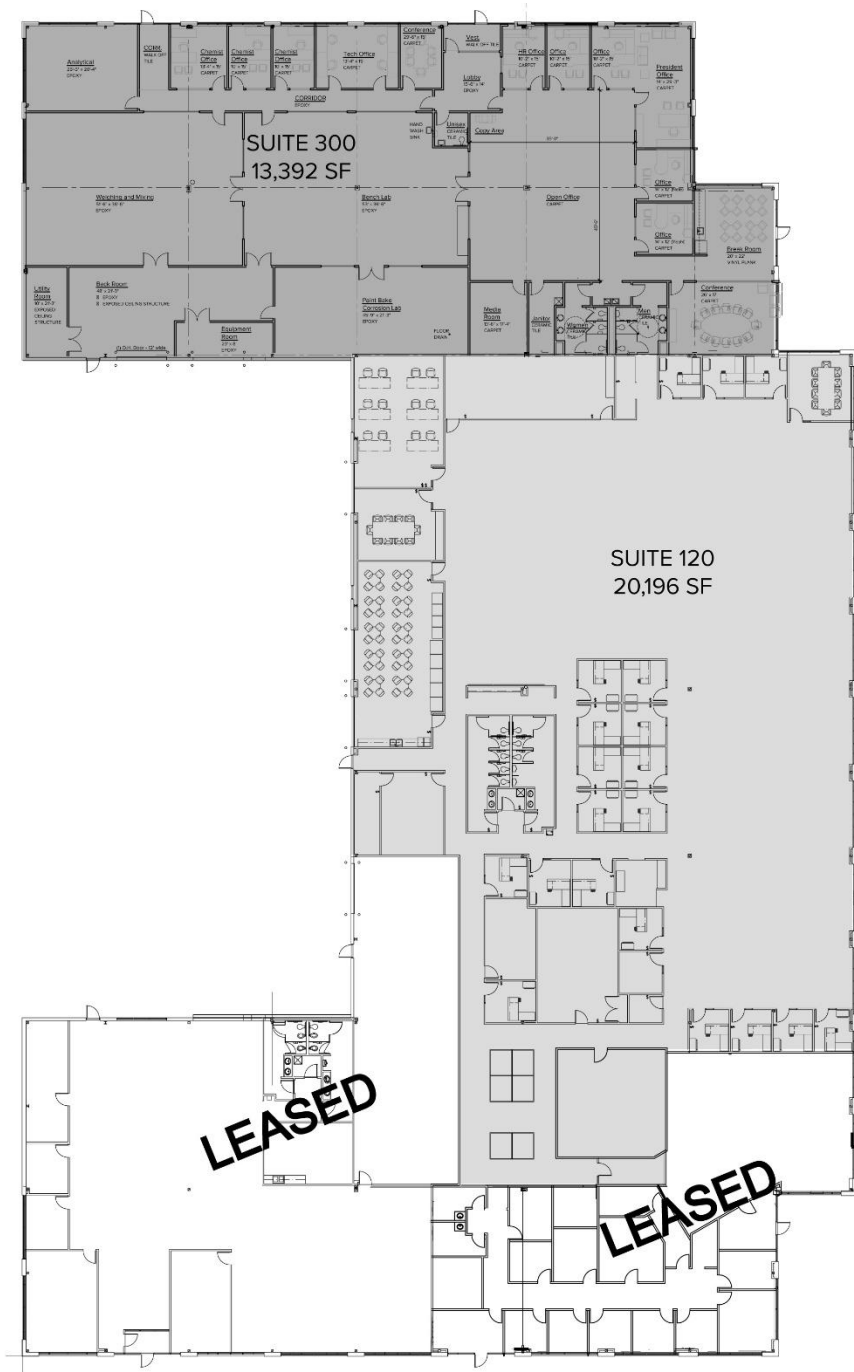
**SIGNATURE ASSOCIATES**  
One Towne Square, Suite 1200  
Southfield, MI 48076  
www.signatureassociates.com

# 48325 - 48679 Alpha Drive - Wixom, Michigan

## Hi-Tech for Lease

Up to 33,588  
Square Feet  
AVAILABLE

Address	Available Sq. Ft.	Office Sq. Ft.	NNN Lease Rate
48561 Alpha - Suite 120	20,196*	To Suit	\$12.50/sf
48561 Alpha - Suite 300	13,392*	To Suit	\$12.25/sf
*Contiguous	*33,588		



For more information, please contact:

**DAVE GREEN**  
(248) 948 4184  
dgreen@signatureassociates.com

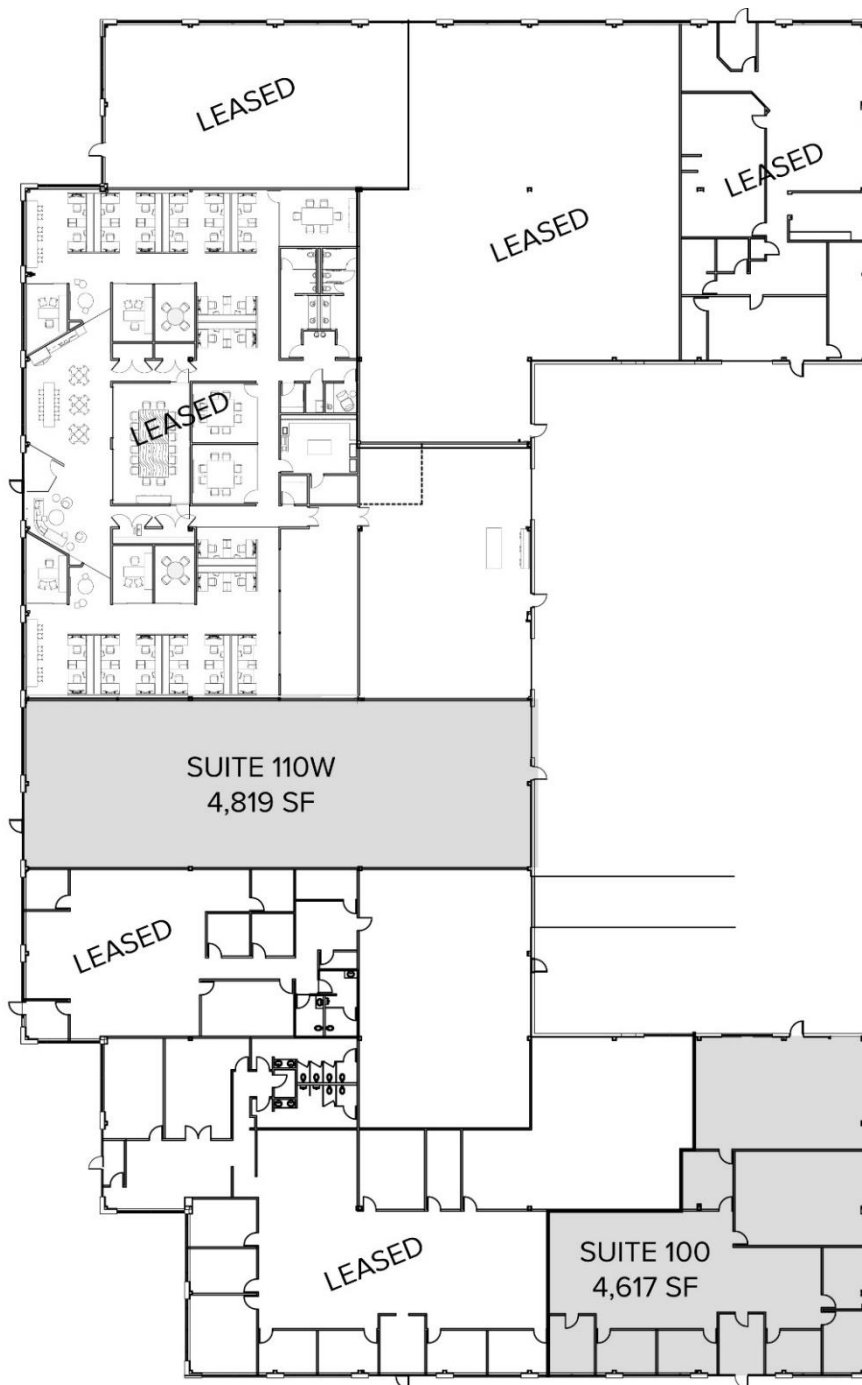
**SIGNATURE ASSOCIATES**  
One Towne Square, Suite 1200  
Southfield, MI 48076  
www.signatureassociates.com

# 48325 - 48679 Alpha Drive - Wixom, Michigan

## Hi-Tech for Lease

Up to 33,588  
Square Feet  
AVAILABLE

Address	Available Sq. Ft.	Office Sq. Ft.	NNN Lease Rate
48679 Alpha - Suite 100	4,617	To Suit	\$10.95/sf
48679 Alpha - Suite 110W	4,819	To Suit	\$8.25/sf



For more information, please contact:

**DAVE GREEN**  
(248) 948 4184  
dgreen@signatureassociates.com

**SIGNATURE ASSOCIATES**  
One Towne Square, Suite 1200  
Southfield, MI 48076  
www.signatureassociates.com

# 48325 - 48679 Alpha Drive - Wixom, Michigan

## Hi-Tech for Lease

Up to 33,588  
Square Feet  
AVAILABLE

### Aerial View



For more information, please contact:

**DAVE GREEN**

(248) 948 4184

[dgreen@signatureassociates.com](mailto:dgreen@signatureassociates.com)

**SIGNATURE ASSOCIATES**

One Towne Square, Suite 1200

Southfield, MI 48076

[www.signatureassociates.com](http://www.signatureassociates.com)