

# Golden Triangle Medical Courtyard

Medical Office Available

25470 Medical Center Drive  
Suites 201 & 203  
Murrieta, CA 92562



# Golden Triangle Medical Courtyard

25470 Medical Center Drive, Suites 201 & 203 | Murrieta, CA 92562



# Medical Office Available

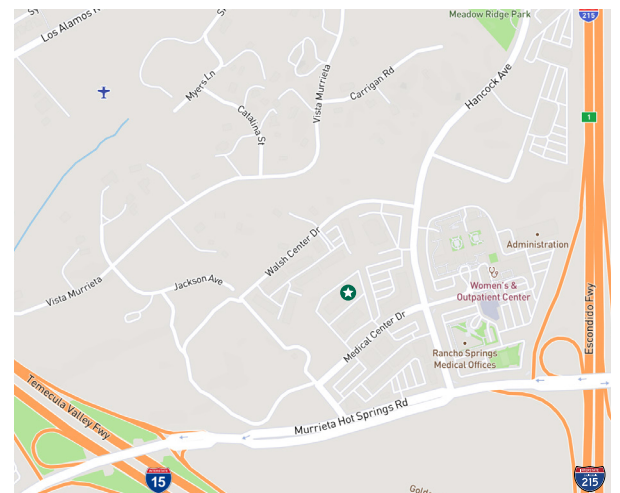
Available For Sale or For Lease

**Suite 201\*** 4,946 SF **Sale Price:** \$2,225,700

**Suite 203\*** 3,429 SF **Sale Price:** \$1,628,775

*\*All suites or two of three can be combined*

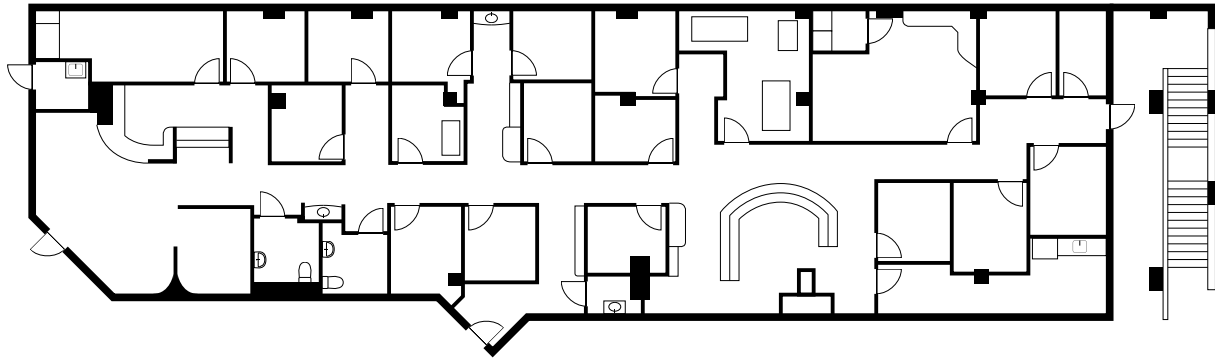
- + Class "A" Medical office project
- + Adjacent to Rancho Springs Medical Center
- + Easy access to both I-15 and I-215
- + Abundant parking
  - 4:1,000 SF
- + Elevator served
- + Tenant mix includes
  - Internal Medicine, Family Medicine, Laboratory, Wellness, Imaging, etc.



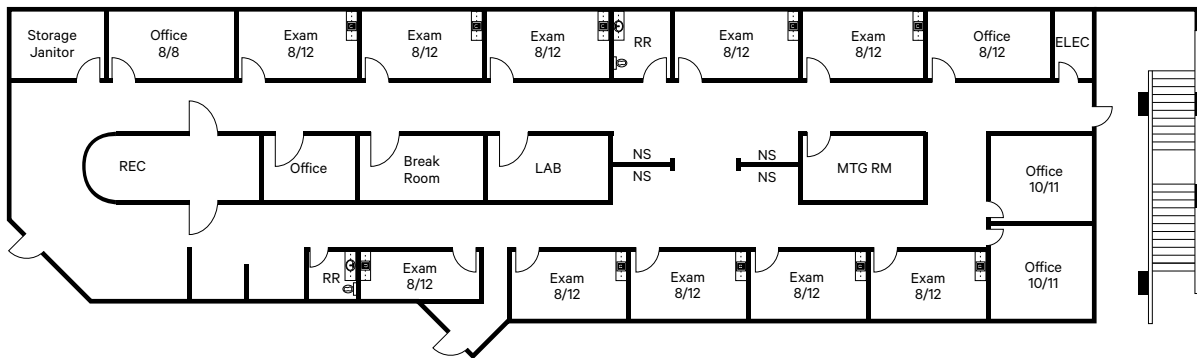
# Floor Plan

## Suite 201

4,946 SF

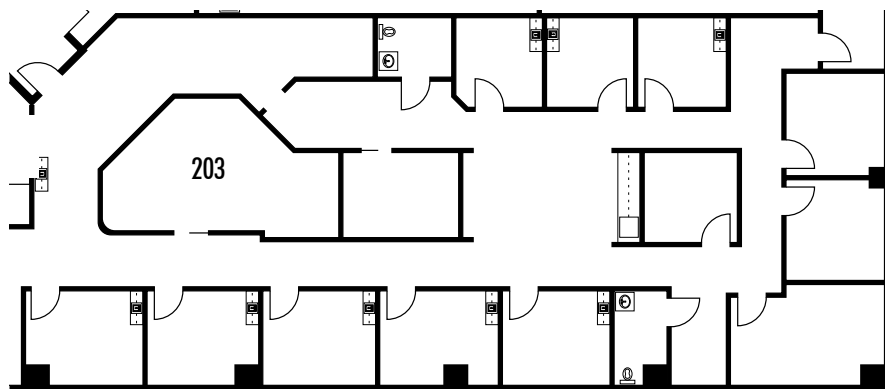


Hypothetical Floor Plan



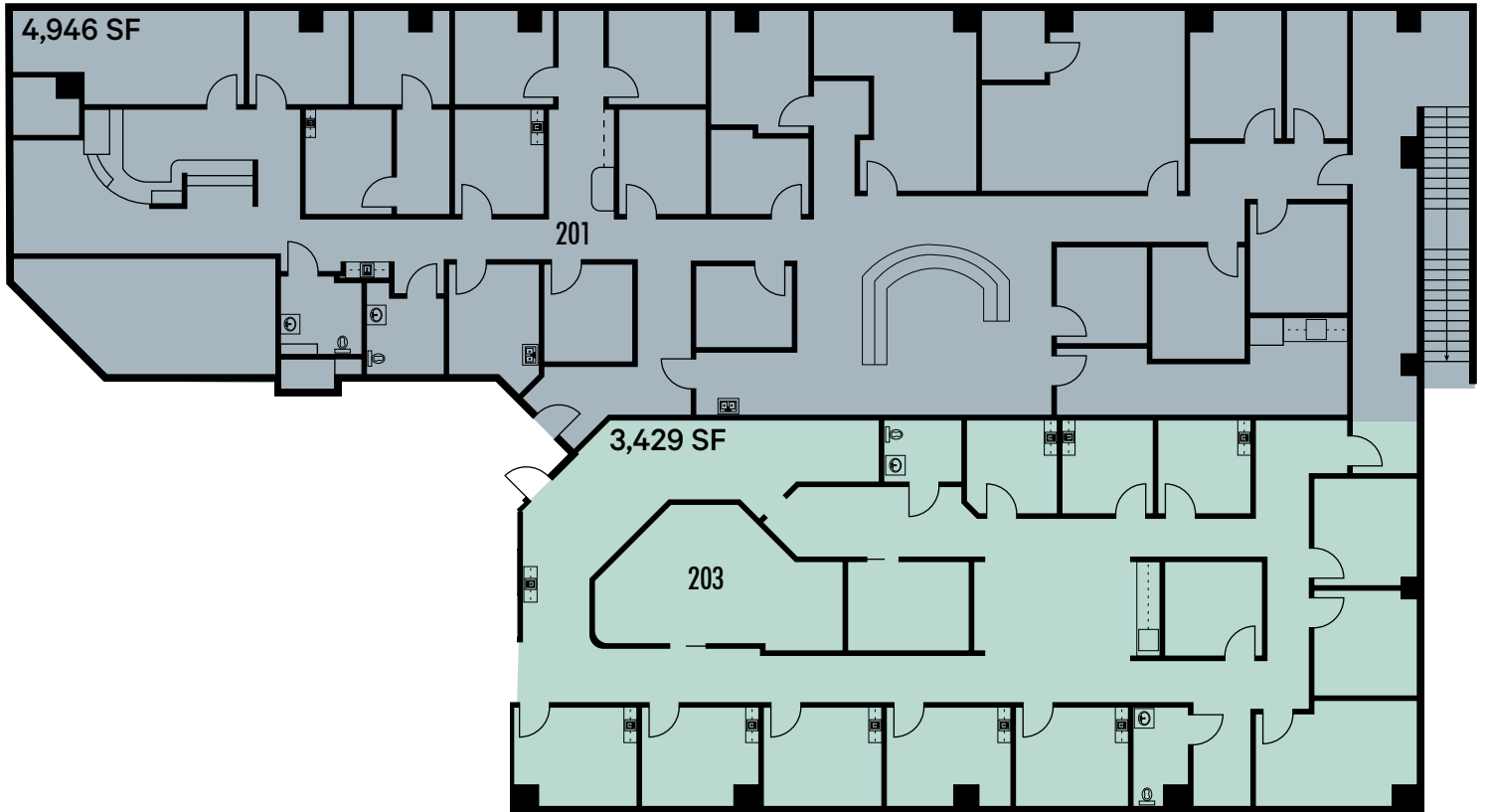
## Suite 203

3,429 SF



# Floor Plan

3,429 - 4,946 SF



# Golden Triangle Medical Courtyard

25470 Medical Center Drive, Suites 201 & 203 | Murrieta, CA 92562

# For Sale or For Lease



## Contact Us

### LARS EISENHAUER

Senior Vice President

+1 760 438 8534

[lars.eisenhauer@cbre.com](mailto:lars.eisenhauer@cbre.com)

Lic. 01372911

### DAN HENRY

First Vice President

+1 760 438 8569

[dan.henry@cbre.com](mailto:dan.henry@cbre.com)

Lic. 02035998

© 2026 CBRE, Inc. All rights reserved. This information has been obtained from sources believed reliable but has not been verified for accuracy or completeness. CBRE, Inc. makes no guarantee, representation or warranty and accepts no responsibility or liability as to the accuracy, completeness, or reliability of the information contained herein. You should conduct a careful, independent investigation of the property and verify all information. Any reliance on this information is solely at your own risk. CBRE and the CBRE logo are service marks of CBRE, Inc. All other marks displayed on this document are the property of their respective owners, and the use of such marks does not imply any affiliation with or endorsement of CBRE. Photos herein are the property of their respective owners. Use of these images without the express written consent of the owner is prohibited.

