

industrial  
space  
for  
**LEASE**

4,275 sf

\$5,500/month

- + great location
- + near orange blossom trl
- + street signage available

- + primary: industrial
- + land: 1.26 ac
- + zoning: c-3
- + parking: 16 Spaces

1325 Indiana St  
orlando, fl 32805

patrick goetz  
vice president  
(407) 734.7210  
pat@BBDRE.com

  
**Bishop Beale Duncan**  
COMMERCIAL REAL ESTATE





## highlights

This versatile industrial building is 4,725 sf and is a 2nd generation auto shop

- Location one building off Indiana St near OBT
- 1 private offices
- restroom
- Reception area
- 2nd gen auto sales



250 N. Orange Ave., Ste. 500  
Orlando, FL 32801  
+ (407) 426.7702  
[www.BBDRE.com](http://www.BBDRE.com)

This offer is subject to errors, omissions, prior sale or withdrawal without notice.



for more information, contact patrick goetz vice president (407) 734.7210 [pat@BBDRE.com](mailto:pat@BBDRE.com)

# property location



location aerial

for more information, contact patrick goetz vice president (407) 734.7210 pat@BBDRE.com

front elevation



elevation

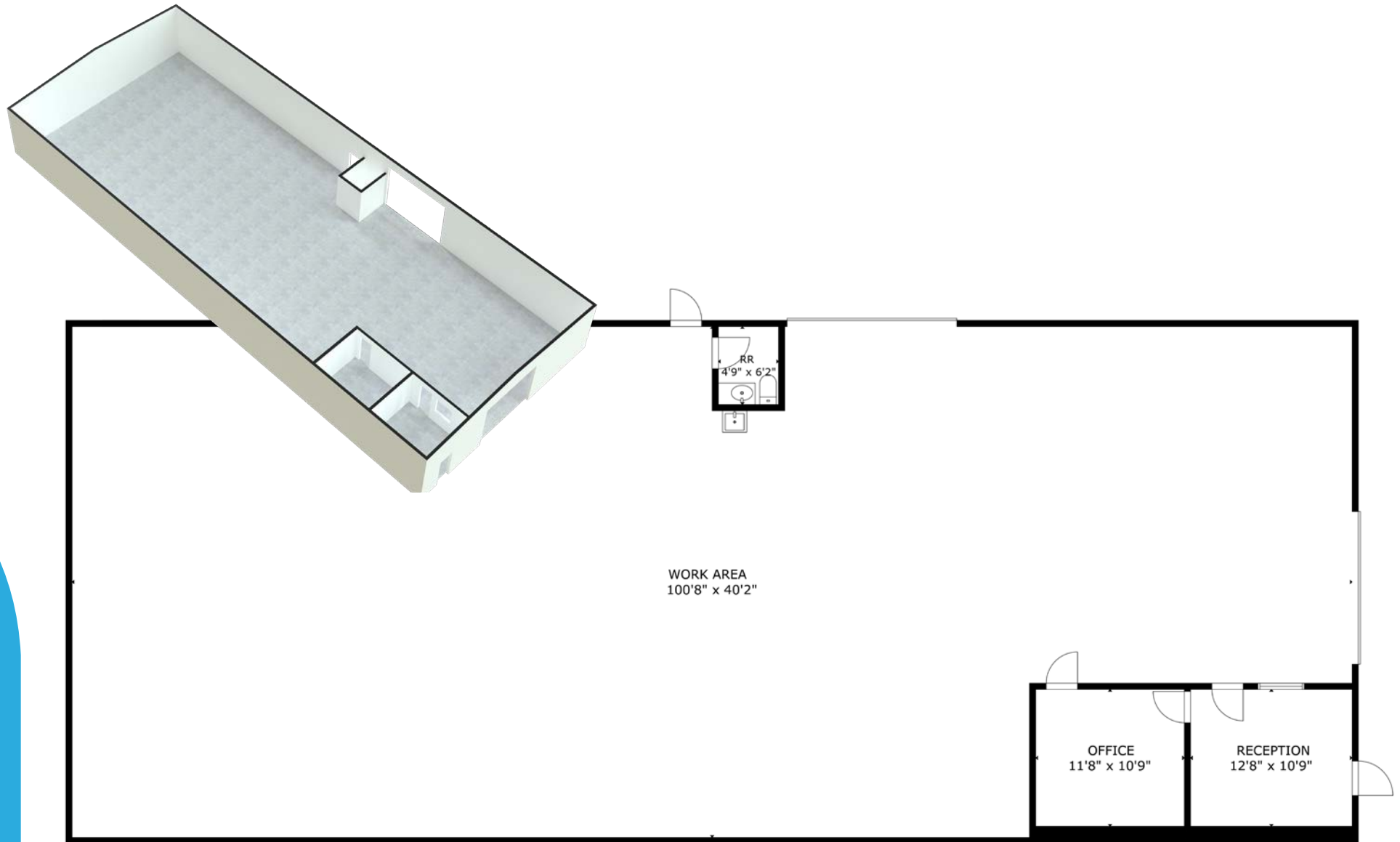
for more information, contact patrick goetz vice president (407) 734.7210 [pat@BBDRE.com](mailto:pat@BBDRE.com)

elevation



for more information, contact patrick goetz vice president (407) 734.7210 [pat@BBDRE.com](mailto:pat@BBDRE.com)

floor plan | 4,275 rsf



floor plan

for more information, contact patrick goetz vice president (407) 734.7210 [pat@BBDRE.com](mailto:pat@BBDRE.com)

## interiors



interiors

