

# NEWLY RENOVATED OFFICE SPACE - CHARLESTON PENINSULA

2 CUMBERLAND STREET  
CHARLESTON, SC 29401

for lease

±1,750 - 8,408 RSF

Rate:  
\$22/SF, NNN  
(\$10.50)

**NAI**Charleston

Scott P. Peevy, CCIM  
**843.518.5316**  
speevey@naicharleston.com

David Ellis Grubbs  
**843.343.9936**  
degrubbs@naicharleston.com



## About the Property

NAI Charleston is pleased to present 2 Cumberland Street, a one-of-a-kind office building centrally located in the historic district of Charleston's peninsula. Two separate full floor suites have been fully renovated with modern finishes and are ready for immediate occupancy. The open floorplans provide functional versatility in a bright setting. The upper floors boast rare views of the Charleston Harbor and several iconic waterfront landmarks including the Ravenel Bridge, the US Customs House, and the USS Yorktown aircraft carrier.

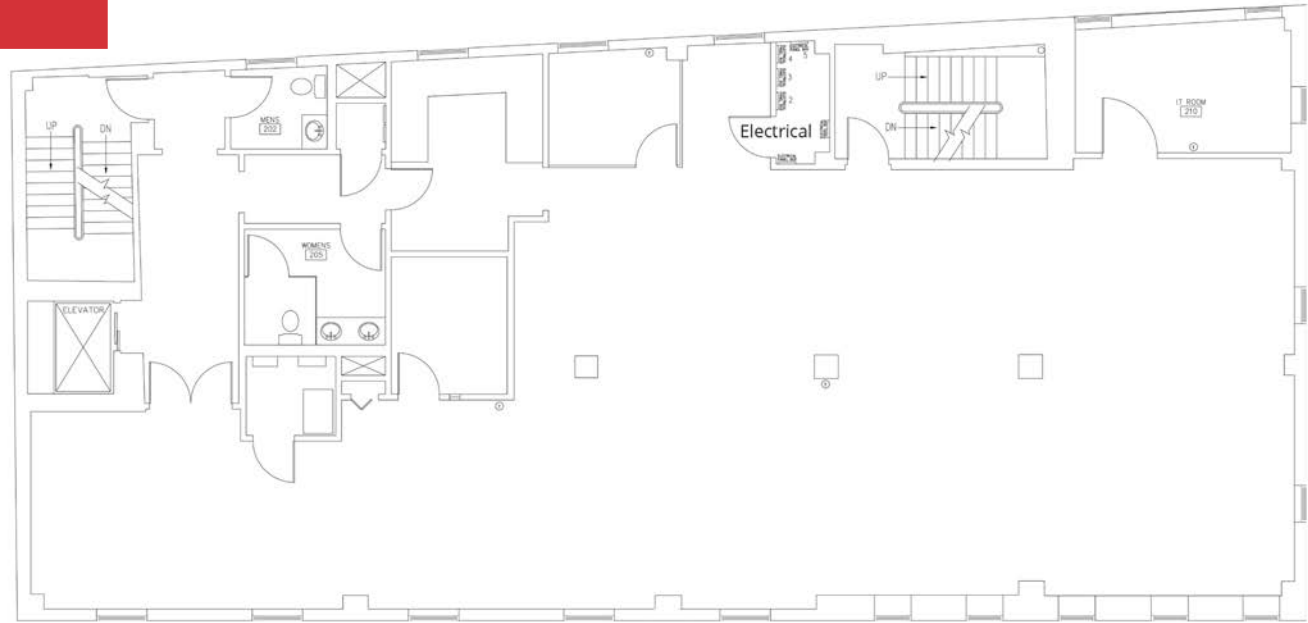
- **Unparalleled Setting**  
Located in the French Quarter District with views of Charleston Harbor and historic skyline.
- **Walkability and Lifestyle Balance**  
Surrounded by culinary, entertainment, and lifestyle attractions. Have lunch with clients at world class restaurants or take a stroll at the nearby waterfront park!
- **Newly Renovated**  
Each floor has been recently renovated with modern fit & finish.



## Offering Summary

Address:	2 Cumberland Street, Charleston, SC 29401
Suites:	Full Floor Suites- 2nd Floor – 4,204 RSF 3rd Floor – 4,204 RSF *Spaces can be demised down to ±1,750 SF
Availability:	Ready to occupy
Lease Rate:	\$22/SF, NNN (\$10.50)
Tenant Expenses:	Proportionate share of utilities, janitorial, suite & HVAC maintenance
Parking:	Directly across street - Concord Cumberland Garage \$125/Mo./space M-F 6am – 6pm
Zoning:	GB- General Business (City of Charleston)

## SECOND FLOOR ±4,204 SF



## THIRD FLOOR ±4,204 SF



\*Spaces can be demised down  
to ±1,750 SF

