

228

E 45TH ST

Between Second & Third Avenues



**24/7
Attended Lobby**



**Parking Garages
Adjacent to Building**



**Grand Central
Transportation Hub**



**One Block From the
United Nations**

CONTACT US

Ira Z. Fishman
Executive Director / Leasing
212.519.2020
ifishman@rreny.com

Brett Weiss
Director / Leasing
212.519.2041
bweiss@rreny.com



RESOLUTION
REAL ESTATE PARTNERS
A Member of NAI Global

AVAILABILITIES

FLOOR	SIZE	SPACE DETAILS
2nd Floor (Northwest)	6,789 RSF	2nd gen installation with perimeter offices & wet pantry
5th Floor (Northwest)	3,090 RSF	2nd gen installation with three private offices and open area, windows facing 45th Street Virtual Tour Link
8th Floor (Northwest)	6,705 RSF	Raw space, landlord will deliver NBI
9th Floor (Northwest)	8,321 RSF	2nd gen installation with 10 perimeter offices and a conference room, north and south facing windows
11th Floor (Northwest)	3,850 RSF	Raw space, north facing windows overlooking 45th Street, landlord will deliver NBI
15th Floor (Northwest)	8,613 RSF	Virtual Tour Link 13 perimeter glass offices, 1 conference room, wet pantry, excellent condition, move-in ready



FLOOR PLANS

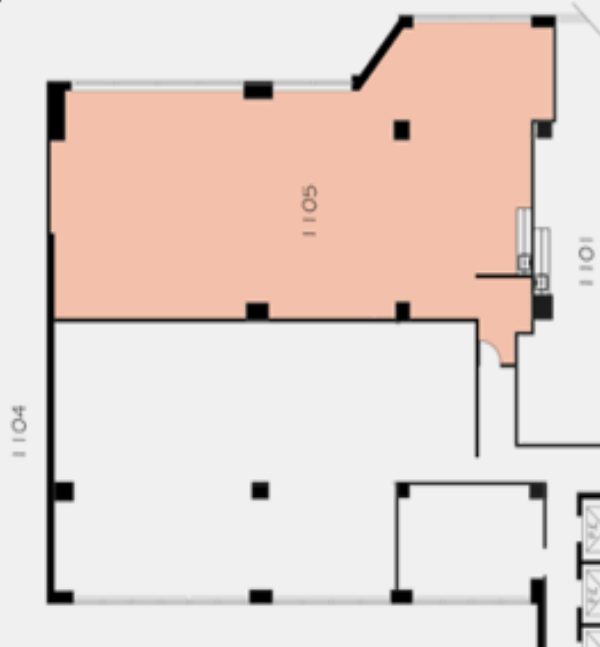
5th Floor



8th Floor



11th Floor



15th Floor



5th Floor



15th Floor





CONTACT US

Ira Z. Fishman
Executive Director / Leasing 212.519.2020
ifishman@rreny.com

Brett Weiss Director / Leasing 212.519.2041
bweiss@rreny.com

